



# CRAFTSMAN HOUSE

2955 Central Ave, St. Petersburg, FL 33713

**FOR LEASE Retail or F&B: 1,700 to 2,027 SF, 1080 to 2,160 SF or 475 SF**

Northeast Corner of Central Ave N and 30<sup>th</sup> Street A Historic Restoration

## A VENUE FOR: RETAIL, DINING, ARTS, YOUR BUSINESS!

The *Craftsman House* is centrally located on Central Avenue, St. Petersburg, known for its bustling atmosphere and eclectic mix of shops, cafes, and cultural destinations. As part of the Grand Central District, the Kenwood neighborhood as well as the Warehouse Arts District, it is surrounded by a thriving community of residents and businesses, the location attracts a steady flow of foot traffic and loyal patrons.

### HISTORY

For 23 years the **Craftsman Courtyard** has been home to *The Craftsman House Gallery (Open through 2025)*. Owner and curator Jeff Schorr has successfully run *The Craftsman House* as an arts & crafts gallery, pottery studio, and an Airbnb unit. The house/gallery was built in 1918, as the model home for the Historic Kenwood neighborhood of St. Petersburg. It is currently a member of the Historic Kenwood Association, The Grand Central District, and the Ware-house Arts District.

### VISION

The *Craftsman House* is a destination for Pinellas County visitors, and a local hangout for the neighborhoods of the Grand Central District, Warehouse Arts District and Kenwood Arts Enclave. As a retail, dining, art gallery or restaurant location, any entity located in the *Craftsman House* will be a contributor to marketing the successful The Grand Central District.

## For more information, For Lease: Contact:

R B Roberts Solutions  
Real Estate Developer Powered  
by: Impact Realty Realtor®

**Bob Roberts**

Phone: 727-477-6199

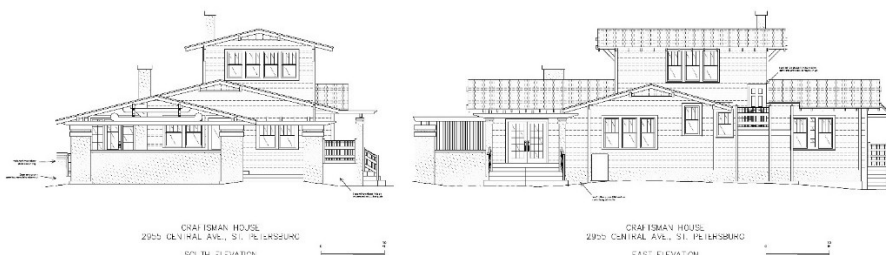
E-mail: [rbr@rbroberts.com](mailto:rbr@rbroberts.com)

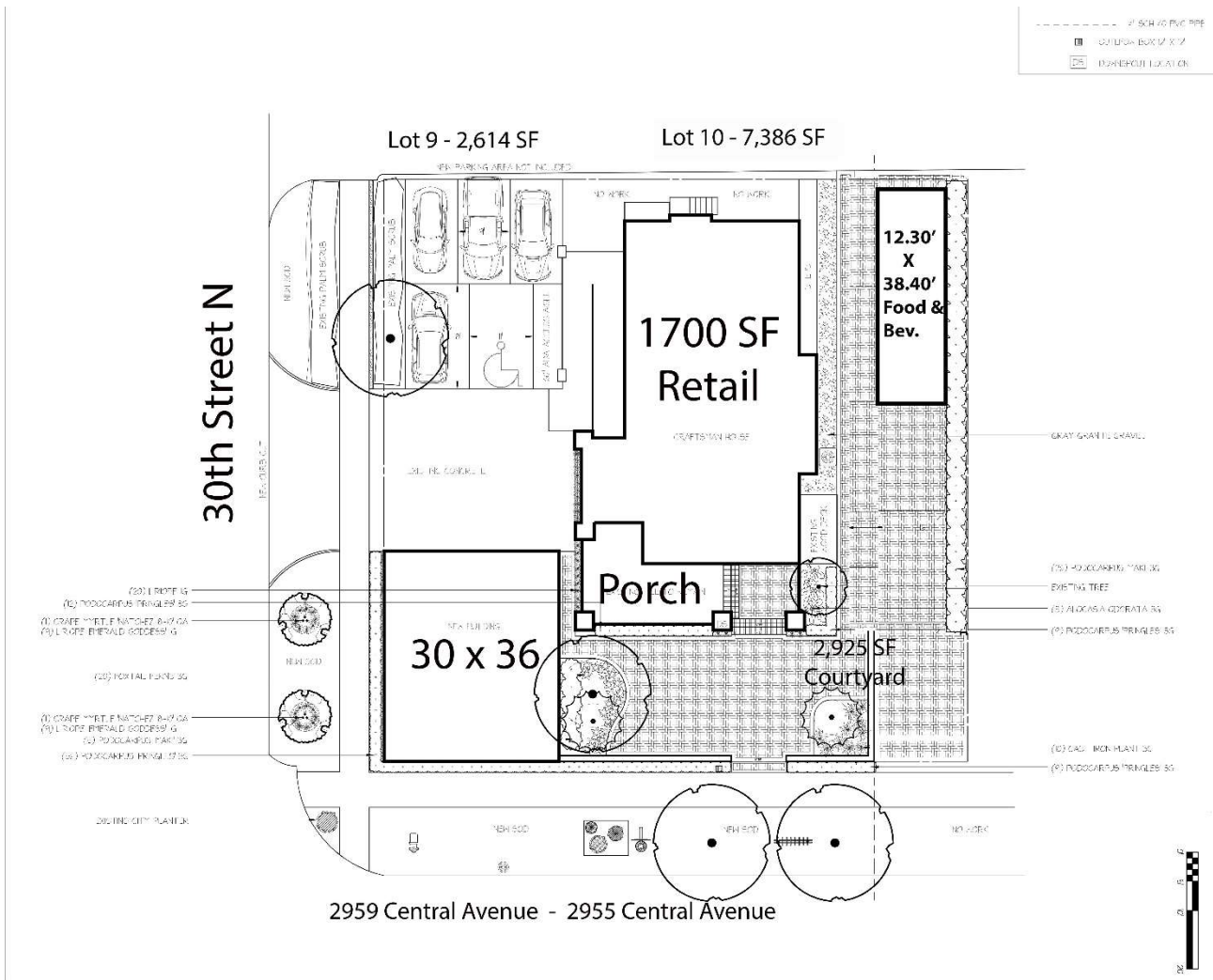
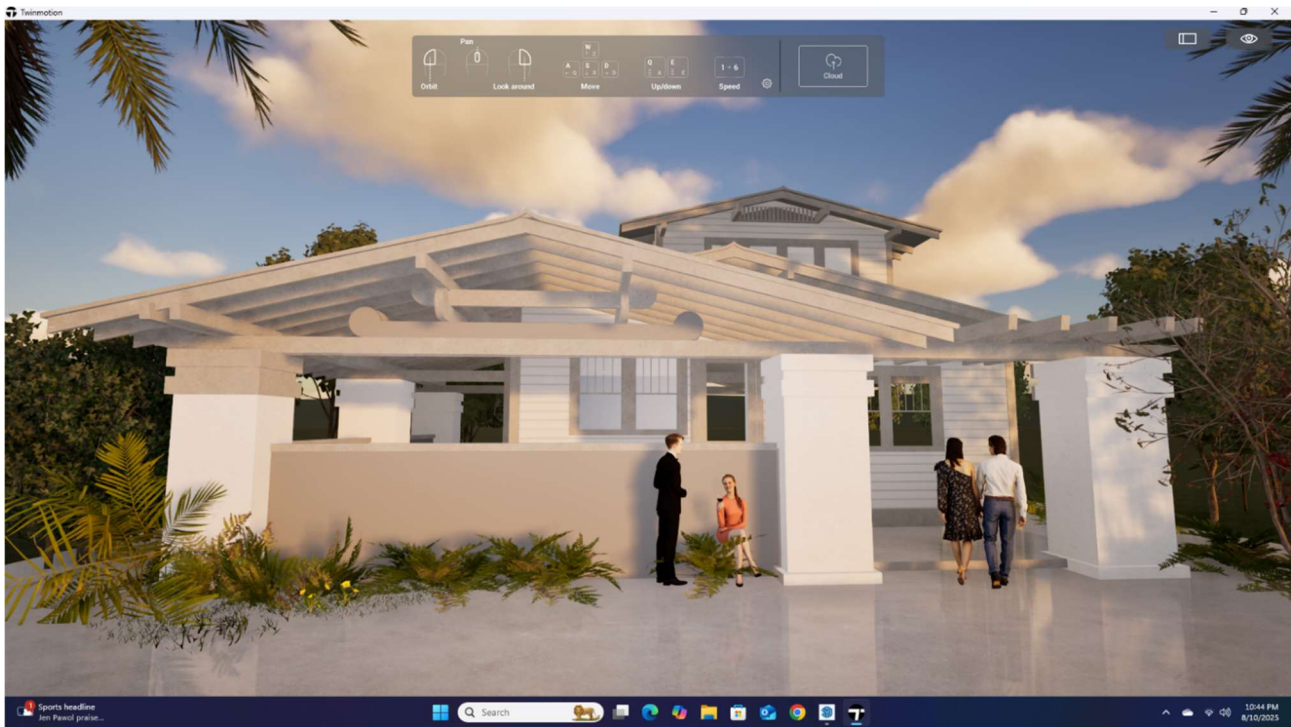
**Alex Caballero**

IMPACT REALTY TAMPA BAY

License #3395367

### The Historic Craftsman House Front and Side Elevations





**Creative Hardscape Concepts, Inc.**  
 1111 N. 1st St., Suite 100  
 St. Petersburg, FL 33705  
 Phone: 727-477-0000  
 Fax: 727-477-0001  
 Email: info@creativehardscape.com  
 Website: www.creativehardscape.com

**Bob Roberts**  
 2955 Central Ave  
 St. Petersburg, FL 33715  
 Phone: 727-477-0000  
 Fax: 727-477-0001  
 Email: info@creativehardscape.com  
 Website: www.creativehardscape.com

**Tommy Todd Landscape & Design**  
 1111 N. 1st St., Suite 100  
 St. Petersburg, FL 33705  
 Phone: 727-477-0000  
 Fax: 727-477-0001  
 Email: info@tommytoddlandscape.com  
 Website: www.tommytoddlandscape.com