

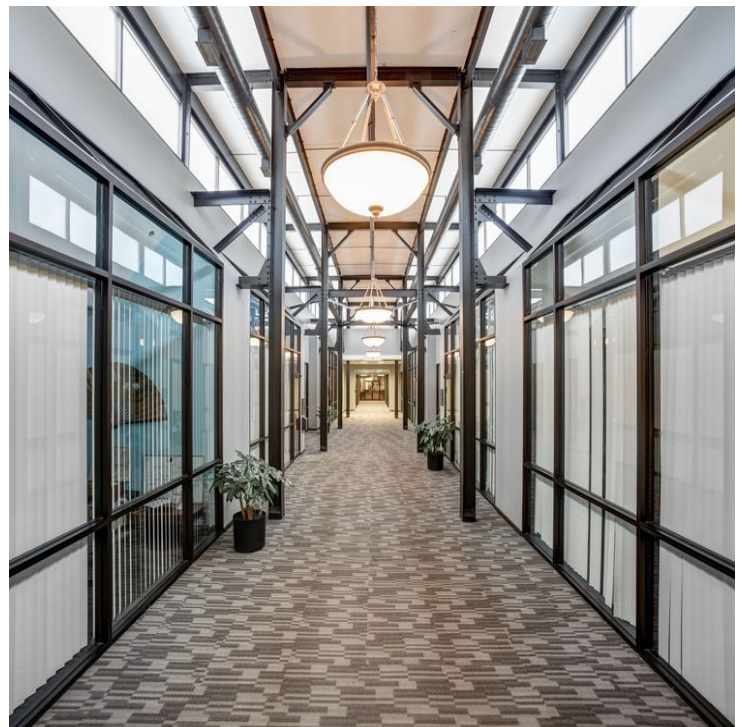
Murray Hill Office Center | 571 Central Avenue | New Providence, NJ

975 - 1,900 SF PROFESSIONAL/MEDICAL SUITES FOR LEASE



PROPERTY HIGHLIGHTS

- Class A Building situated in downtown New Providence
- At **I-78**, 15 miles from **Newark Airport** and 25 miles west of New York City
- **975 SF, 1,050 SF and 1,900 SF** Suites
- Corporate Campus Setting including outdoor courtyard with seating
- Generous Parking Ratio: **5/1000 sq. ft.**
- Interior Atrium with plants and seating
- Building adjoins **hotel** with restaurant, banquet, meeting rooms, and **full service fitness, gym and tennis center**
- Opposite shopping center/post office
- Walking distance to Murray Hill/**NJ Transit train station to Newark/NYC**
- Join prominent medical and professional office tenants
- **Rental Rate:** \$25.00 per sq. ft. plus electric and interior cleaning



KEVIN BADGER

Sales & Leasing Associate
908.360.8050 x307
kbadger@kislakrealty.com

Kislak Commercial Real Estate Services, Inc.
180 Mount Airy Road
Basking Ridge, NJ 07920
908.360.8050 | kislakrealty.com

Murray Hill Office Center | 571 Central Avenue | New Providence, NJ

ADDITIONAL PHOTOS



KEVIN BADGER
Sales & Leasing Associate
908.360.8050 x307
kbadger@kislakrealty.com

Kislak Commercial Real Estate Services, Inc.
180 Mount Airy Road
Basking Ridge, NJ 07920
908.360.8050 | kislakrealty.com

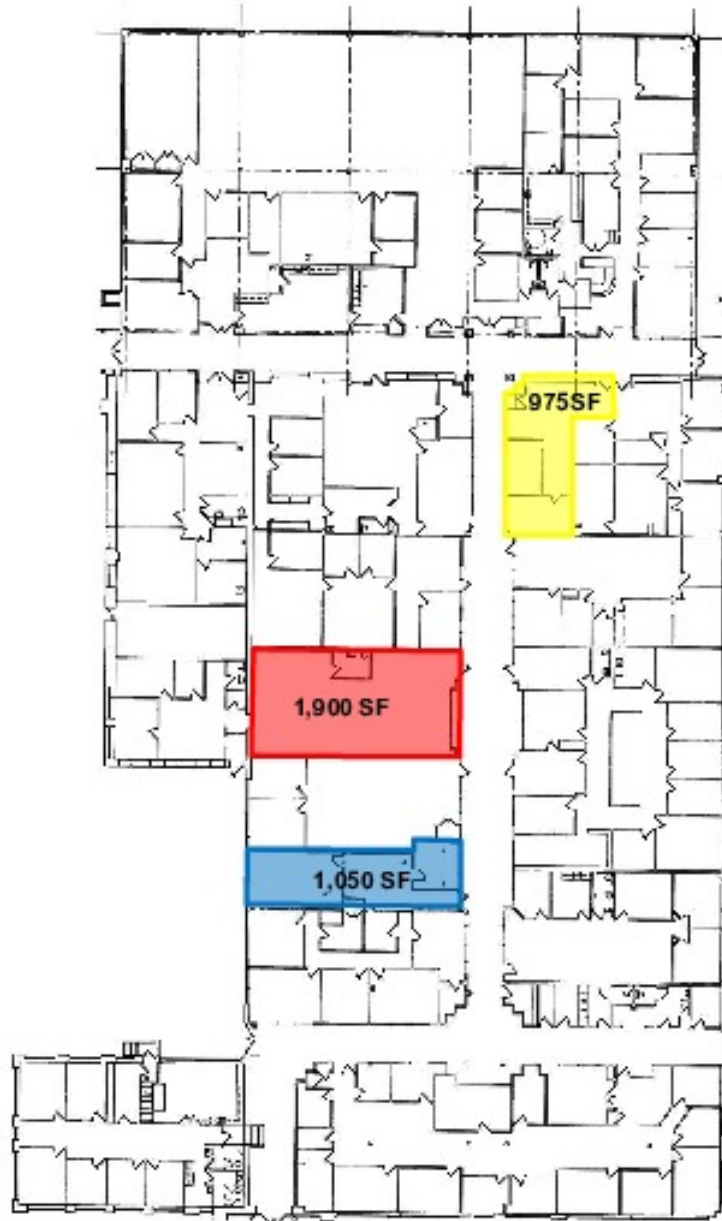
ADDITIONAL PHOTOS



KEVIN BADGER
Sales & Leasing Associate
908.360.8050 x307
kbadger@kislakrealty.com

Kislak Commercial Real Estate Services, Inc.
180 Mount Airy Road
Basking Ridge, NJ 07920
908.360.8050 | kislakrealty.com

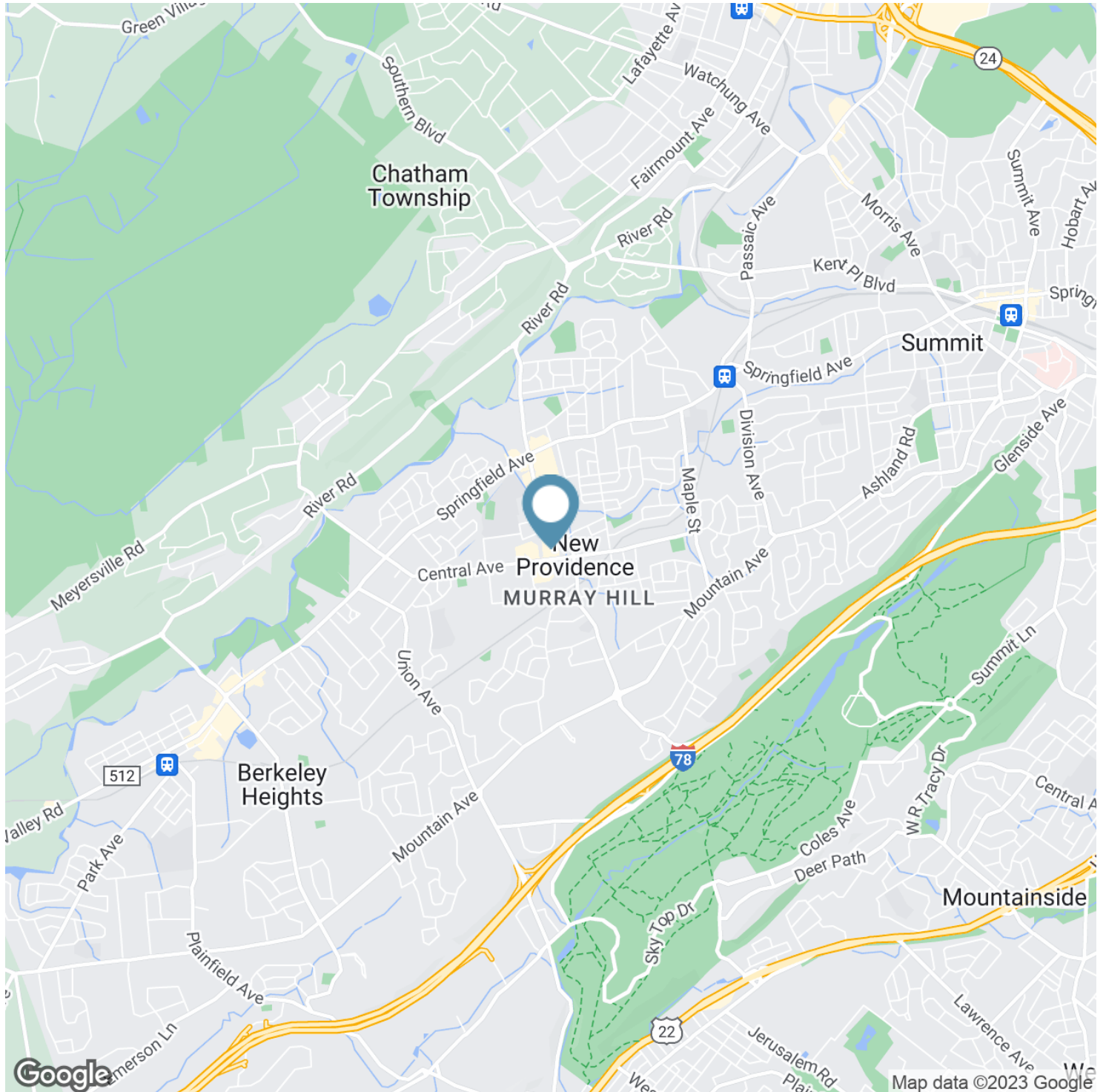
FLOOR PLANS

**KEVIN BADGER**

Sales & Leasing Associate
908.360.8050 x307
kbadger@kislakrealty.com

Kislak Commercial Real Estate Services, Inc.
180 Mount Airy Road
Basking Ridge, NJ 07920
908.360.8050 | kislakrealty.com

LOCATION MAP



KEVIN BADGER

Sales & Leasing Associate
908.360.8050 x307
kbadger@kislakrealty.com

Kislak Commercial Real Estate Services, Inc.
180 Mount Airy Road
Basking Ridge, NJ 07920
908.360.8050 | kislakrealty.com