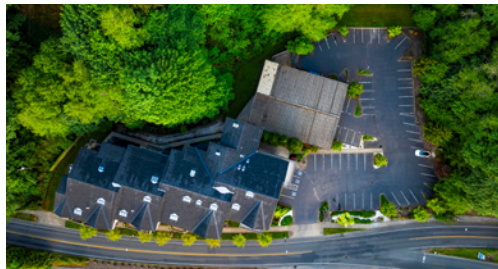




PREMIUM OFFICE SPACE WITH WATERFRONT VIEWS



1801 WEST BAY DRIVE, OLYMPIA, WA

Join a great group of office users in the immaculately maintained Smyth Landing. Beautiful views of Budd Inlet and Mount Rainier, located only five minutes from downtown Olympia. Enjoy the natural beauty of the area and local amenities, including surface parking at the building.

**SUITE 102A:** The layout includes a large open area with a private restroom & shower, reception & waiting area.

1,452 SF

CBA# 33240757

\$26.95/SF, FULL SERVICE

**SUITE 102B:** Comprised of three private offices, a reception desk, an open meeting area, ample storage closets, and a kitchenette/breakroom.

1,555 SF

CBA# 40228046

\$26.95/SF, FULL SERVICE



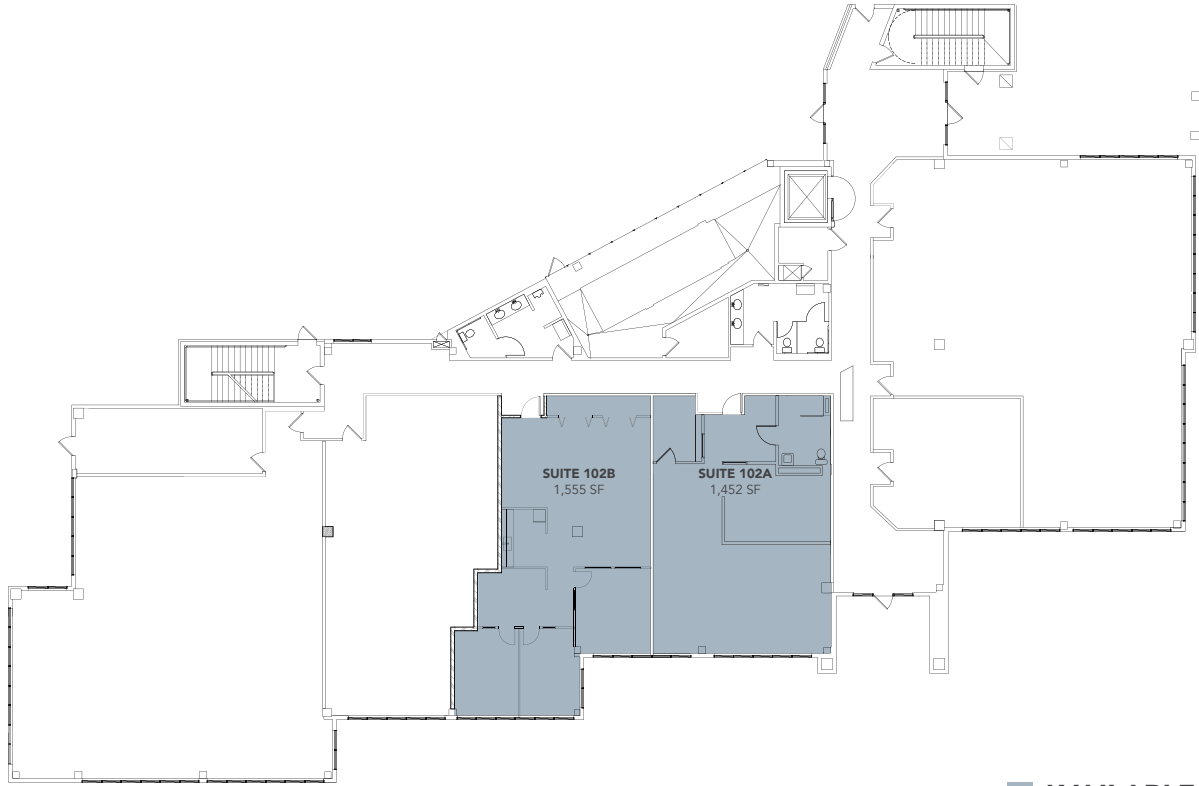
This information, while obtained from sources we deem reliable, is not guaranteed. It is provided without any representation, warranty or guarantee, expressed or implied as to its accuracy. Prospective buyer or tenant should conduct an independent investigation and verification of all matters deemed to be material, including, but not limited to, statements of income and expenses. Consult your attorney, accountant, or other professional advisor.



**Becky Samuelson, CCIM, CPM**  
BROKER  
360-352-7666  
becky@rantsgroup.com

**360-943-8060**  
RANTSGROUP.com

1801 WEST BAY DRIVE, OLYMPIA, WA | SMYTH LANDING



**AVAILABLE**



THIS FLOORPLAN IS NOT TO SCALE  
SIZES AND DIMENSIONS ARE APPROXIMATE, ACTUAL MAY VARY.



## CONTACT

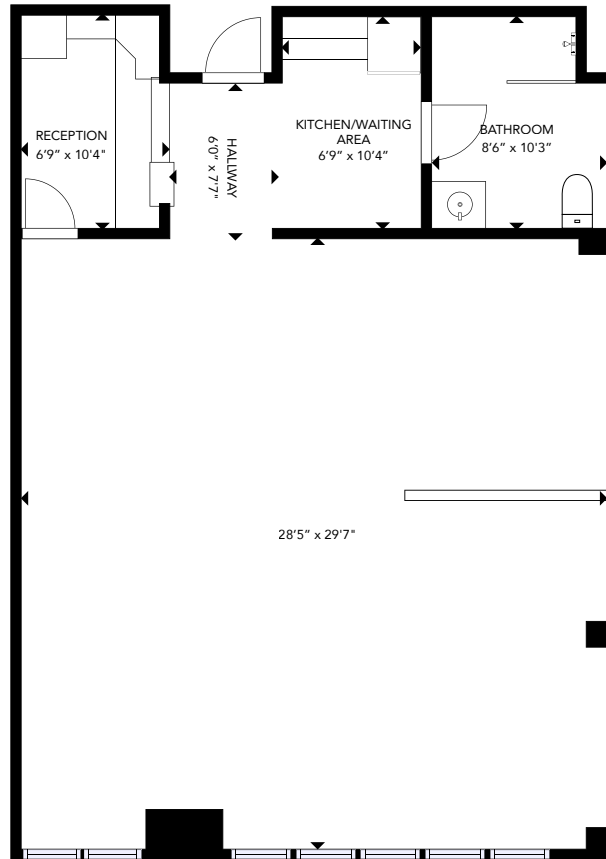
**Becky Samuelson, CCIM, CPM**  
BROKER  
(360) 352-7666  
becky@rantsgroup.com





1801 WEST BAY DRIVE, OLYMPIA, WA | SMYTH LANDING

102A: 1,452 SF



THIS FLOORPLAN IS NOT TO SCALE  
SIZES AND DIMENSIONS ARE APPROXIMATE, ACTUAL MAY VARY.



## CONTACT

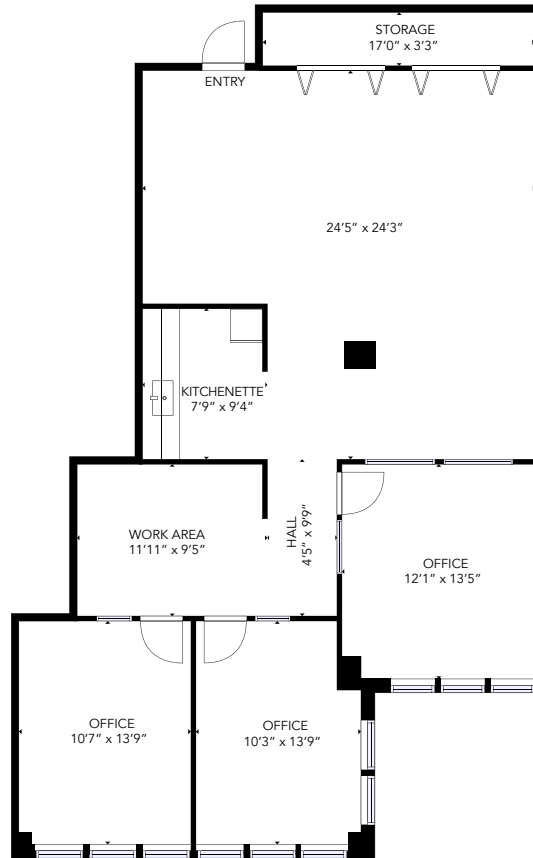
**Becky Samuelson, CCIM, CPM**  
BROKER  
(360) 352-7666  
becky@rantsgroup.com



rantsgroup/SmythLanding102A

1801 WEST BAY DRIVE, OLYMPIA, WA | SMYTH LANDING

102B: 1,555 SF



THIS FLOORPLAN IS NOT TO SCALE  
SIZES AND DIMENSIONS ARE APPROXIMATE, ACTUAL MAY VARY.



## CONTACT

**Becky Samuelson, CCIM, CPM**  
BROKER  
(360) 352-7666  
becky@rantsgroup.com



rantsgroup/SmythLanding102B

This information, while obtained from sources we deem reliable, is not guaranteed. It is provided without any representation, warranty or guarantee, expressed or implied as to its accuracy. Prospective buyer or tenant should conduct an independent investigation and verification of all matters deemed to be material, including, but not limited to, statements of income and expenses. Consult your attorney, accountant, or other professional advisor.

360-943-8060 | RANTSGROUP.com