

# FOR LEASE



## 3151 NE Sandy Blvd. Portland, OR 97232

3 Private Offices | 138 - 218 SF Suites  
\$550 - \$780/mo. flat rate

Debbie Thomas | Listing Broker  
503.720.6335 | [deb@debbiethomas.com](mailto:deb@debbiethomas.com)



YOUR URBAN REAL ESTATE RESOURCE

# THE BUILDING

This charming **office building** features tons of natural light, on-site parking and easy I-84 access. It is close to the bustling **Hollywood and Broadway** business districts, the **Bindery Building, Restaurant Row**, and less than 10 minutes to downtown.



3 Private Offices

3 Restrooms

Conference Room

Reception Area

Shared Waiting Room

Kitchen & Breakroom

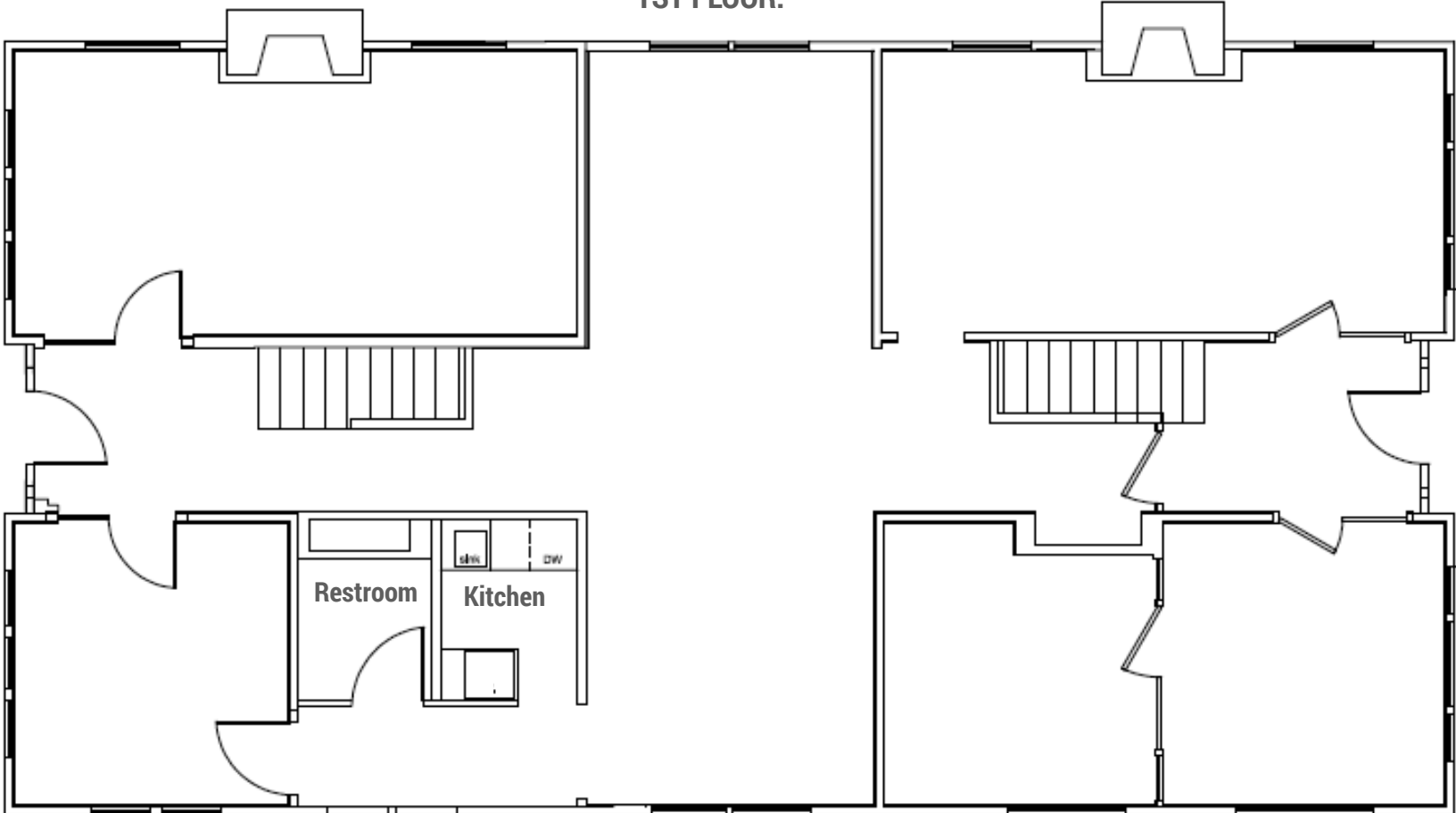
Storage Areas

On-Site Parking

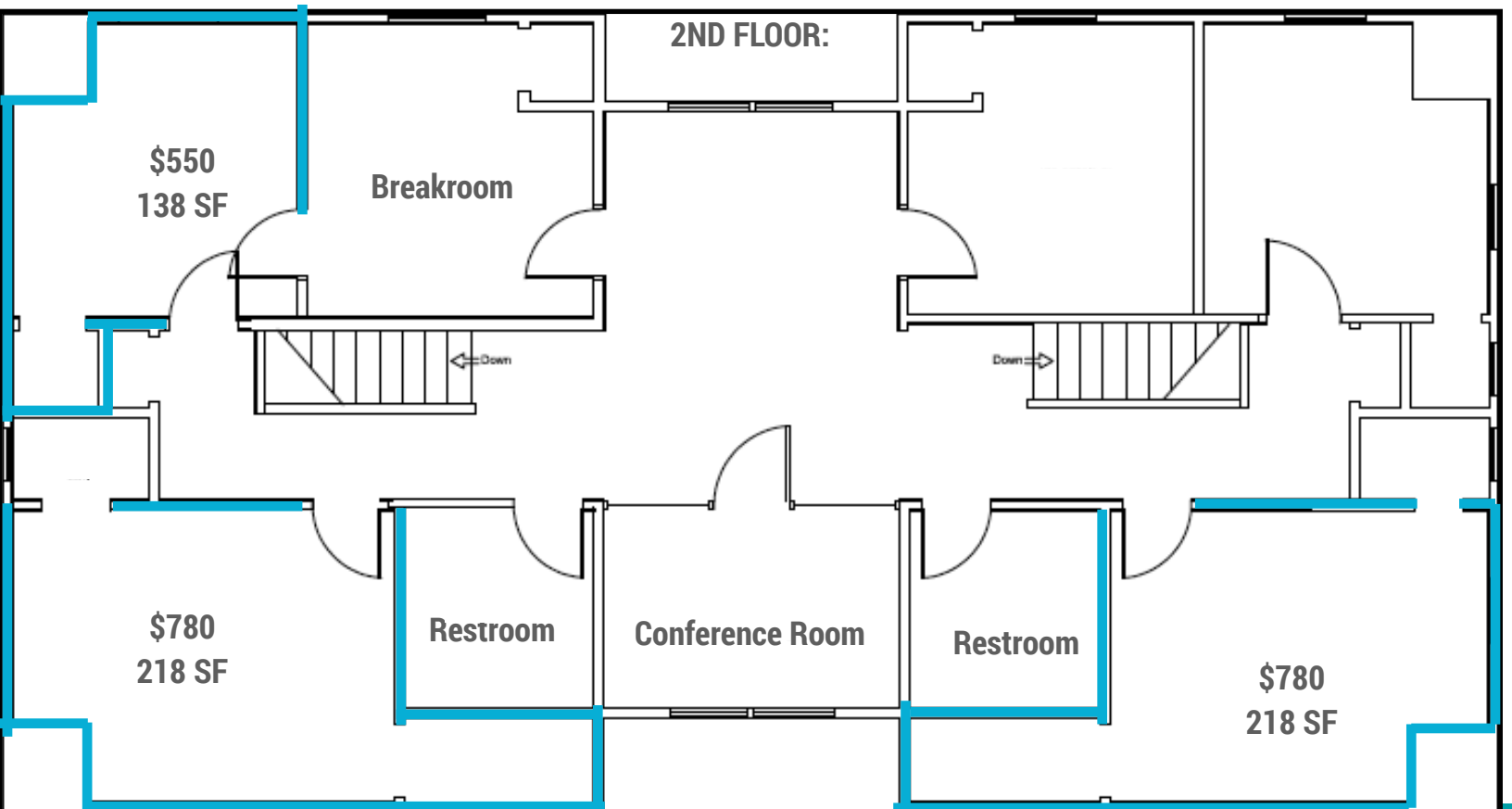


# THE SPACE

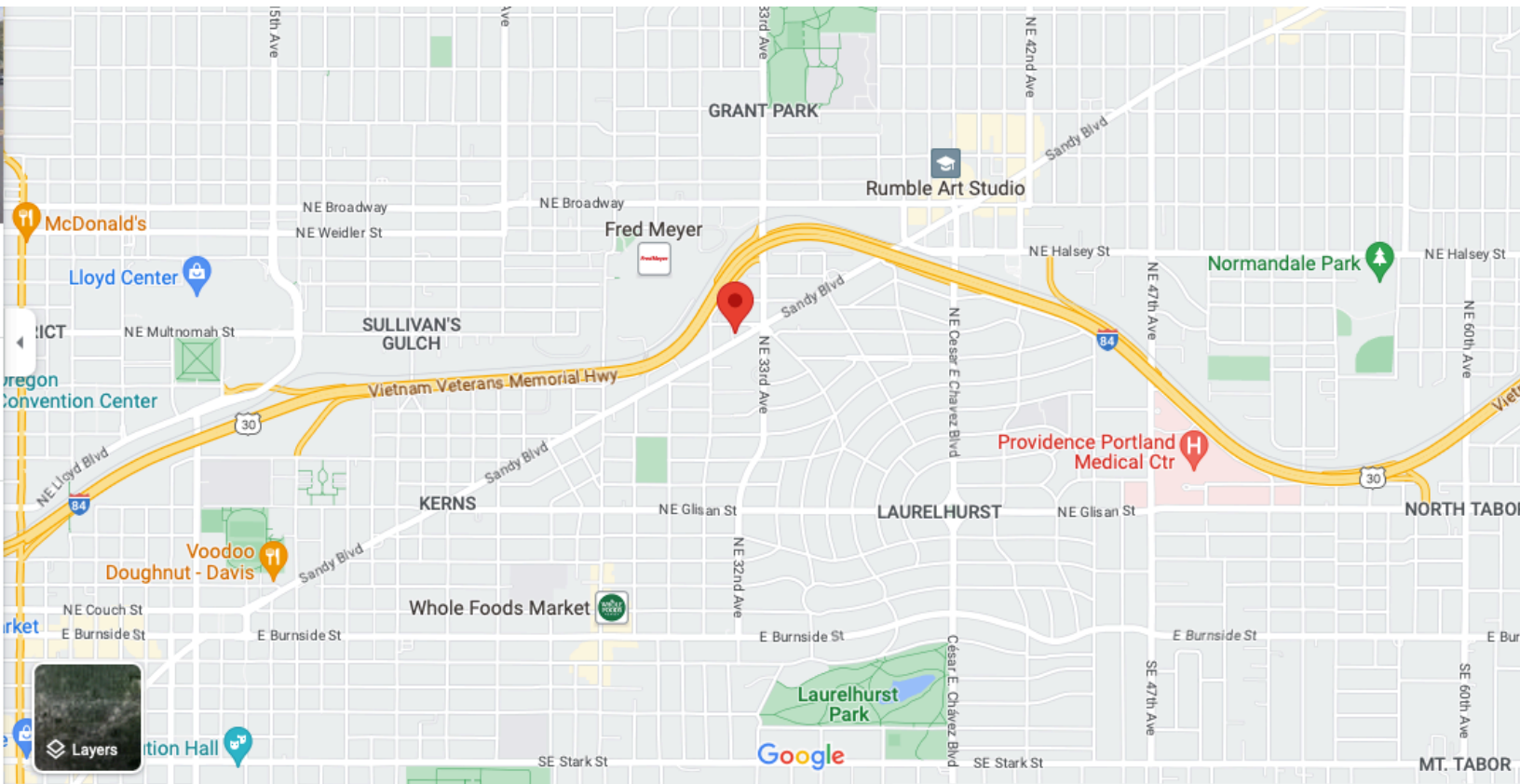
## 1ST FLOOR:



## 2ND FLOOR:



# THE NEIGHBORHOOD



## VERY WALKABLE

80



## SOME TRANSIT

46



## BIKER'S PARADISE

96



## SHOP

Lloyd Center Mall  
 Whole Foods Market  
 Fred Meyer  
 Target  
 Trader Joes  
 Creative Culture  
 Mountain Shop  
 Bricks & Minifigs  
 Music Millenium  
 Hollywood Vintage

## EAT

Voodoo Donuts  
 Petite Provence  
 Alex Mexican Cantina  
 Guero  
 Boxcar Pizza  
 Pambiche  
 The Moon & Sixpence  
 Stammish  
 Fire on the Mountain  
 Screen Door

## PLAY

Laurelhurst Park  
 Grant Park  
 Doug Fir Lounge  
 Moda Center  
 Revolution Hall  
 Hollywood Theatre  
 Rumble Art Studio  
 Colonel Summers Park  
 The Circuit Bouldering Gym  
 Buckman Field Park

The information contained herein has been obtained from sources we deem reliable. We do not guarantee its accuracy. All information should be verified prior to purchase or lease.