

1240 Sixth St.



FOR LEASE

**BEAUTIFUL STAND ALONE BUILDING WITH
PRIVATE YARD AND PARKING**

SIZE

± 1,450-2,900
sq. ft.

OFFERED AT

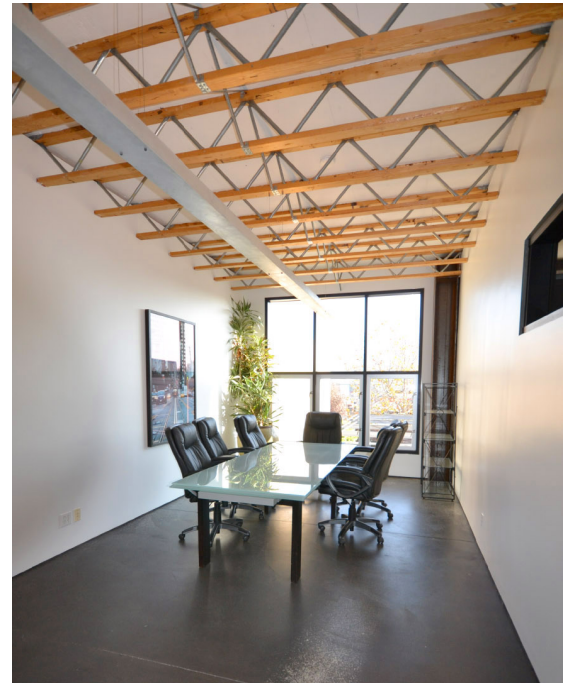
\$3.50 IG

LOCATION

1240 Sixth Street, Berkeley

PROPERTY HIGHLIGHTS

- Great natural light
- Exposed ceilings
- 24 Solar panels
- Radiant Heat
- Gated parking
- Concrete Floor
- Private back patio
- First and second floors can be occupied independently or together



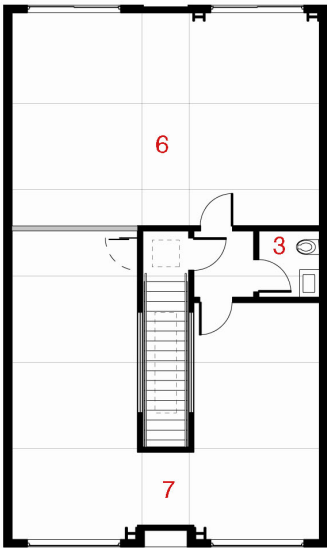
**NORHEIM
& YOST**

732 Addison Street
Suite "C"
Berkeley, CA 94710

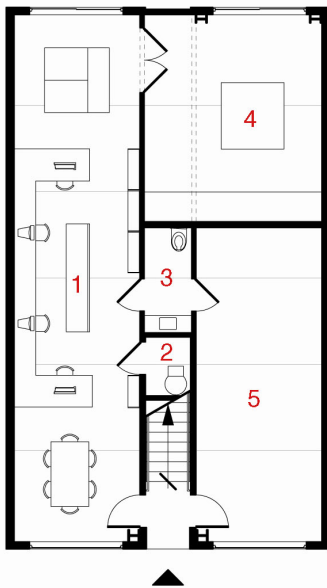
John Norheim
BRE # 00770171
jn@noryost.com
510-527-3400 x10

Elena Holsman
BRE# 01731812
eh@noryost.com
510-527-3400 x11

1240 SIXTH STREET



UPPER FLOOR PLAN



GROUND FLOOR PLAN

- 1. STUDIO
- 2. MECH
- 3. BATH
- 4. SHOP
- 5. SUITE B
- 6. SUITE C
- 7. SUITE D

