

601

601 CITY CENTER
OAKLAND, CA

[WATCH THE VIDEO](#)

OAKLAND LUXURY
IN THE HEART OF THE BAY AREA







AN ELEVATED WORKPLACE EXPERIENCE

EXPERIENCE

- White-glove service with 24/7 attended lobby and security
- Concierge-level property management
- Hospitality-driven arrival and daily experience

DESIGN

- Floor-to-ceiling double glazed glass delivering expansive natural light and controlled heat load
- Column-free floor plates designed for flexibility and efficiency
- Premium materials and refined architectural detailing throughout

CONNECTIVITY

- Access to BART and regional transit
- Immediate proximity to Oakland's best dining and amenities
- Seamless access to San Francisco and the greater Bay Area



AT **601 CITY CENTER**, THE WORKPLACE
IS REIMAGINED AS AN EXPERIENCE.

Designed with the precision of a luxury hotel and the performance expectations of today's leading companies, the building offers an environment that is both refined and highly functional.

From the moment of arrival to the final meeting of the day, every detail has been considered - creating a workplace that enhances productivity, elevates brand presence, and attracts top talent.

WHY 601 CITY CENTER



- Elevates company brand and client experience



- Supports talent attraction and retention



- Offers flexibility for growth and change



- Delivers a hospitality-driven workplace environment



- Availabilities for immediate occupancy and flagship tenancy





THE LOBBY EXPERIENCE

A welcoming, gallery-style lobby anchors the building as its social heart, highlighted by a striking 360-square-foot LED digital art wall and a 19-by-34-foot living wall.

Designed by acclaimed artists, these features establish a refined sense of luxury and sophistication, setting the tone for a modern professional workplace.



VIRTUAL TOUR HERE

[MATTERPORT LINK](#)



OUTDOOR RETREAT

An inviting outdoor terrace that feels like a private escape, complete with a putting green, BBQ area, and fire pit—perfect for casual gatherings, team socials, or unwinding outdoors.





FITNESS & WELLNESS

A boutique-style fitness center offering a refreshed workout experience with modern equipment, spa-like locker rooms, private showers, and complimentary towel service.

VIRTUAL TOUR HERE

MATTERPORT LINK





MEETINGS & EVENTS

A thoughtfully designed, multi-room conference facility that accommodates meetings of all sizes, enhanced by a convenient kitchenette to support seamless hosting and catering and access to the rooftop outdoor retreat.



FEATURED TENANT INTERIORS

e.l.f. COSMETICS



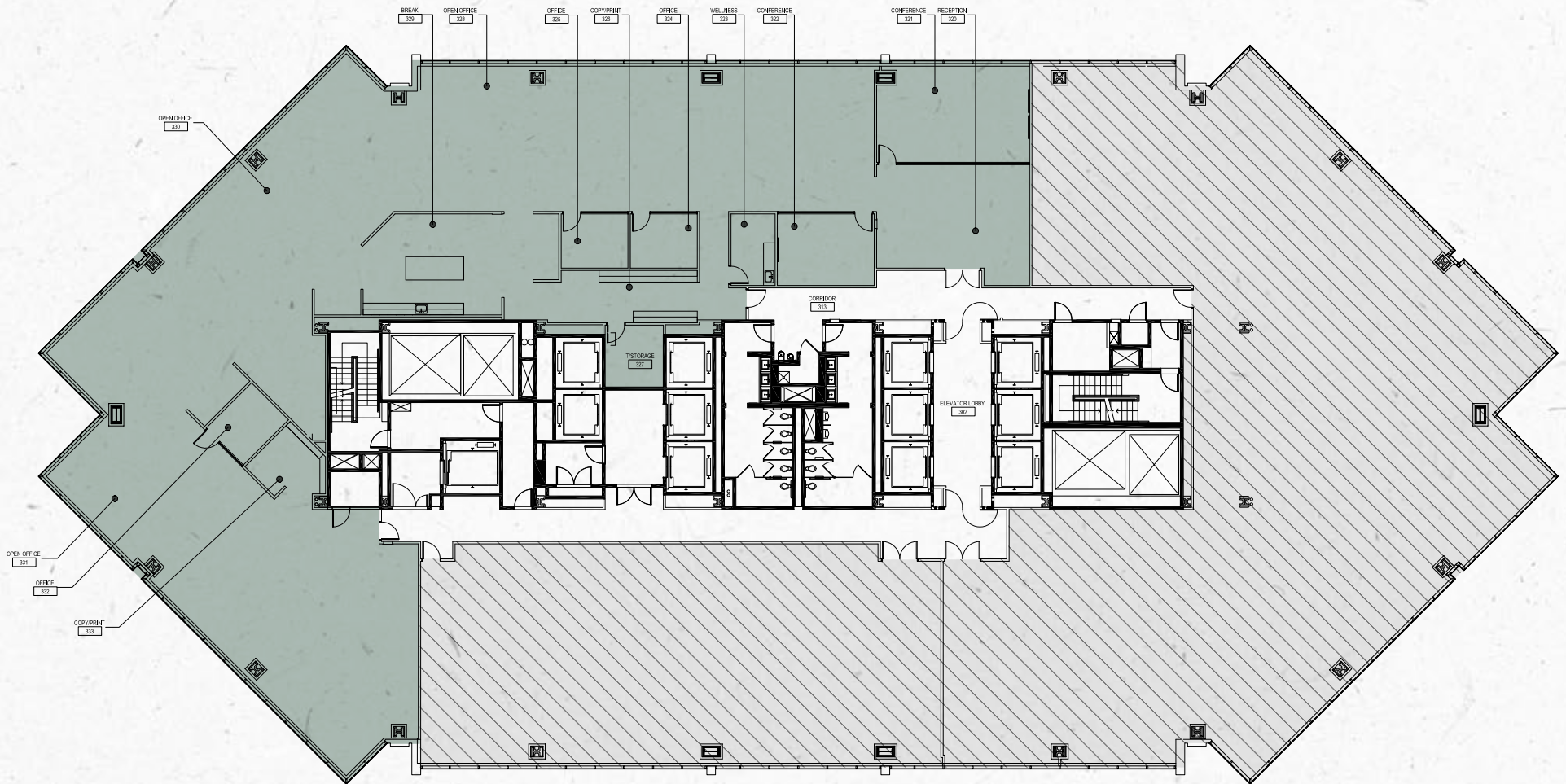
SUITE 300

12,478 RSF

SPEC SUITE

[VIRTUAL TOUR HERE](#)

[MATTERPORT LINK](#)



Floor plan/site plan not to scale/not exact.

SUITE 300

INTERIORS



SUITE 325

4,632 RSF

SPEC SUITE

[VIRTUAL TOUR HERE](#)

[MATTERPORT LINK](#)



Floor plan/site plan not to scale/not exact.

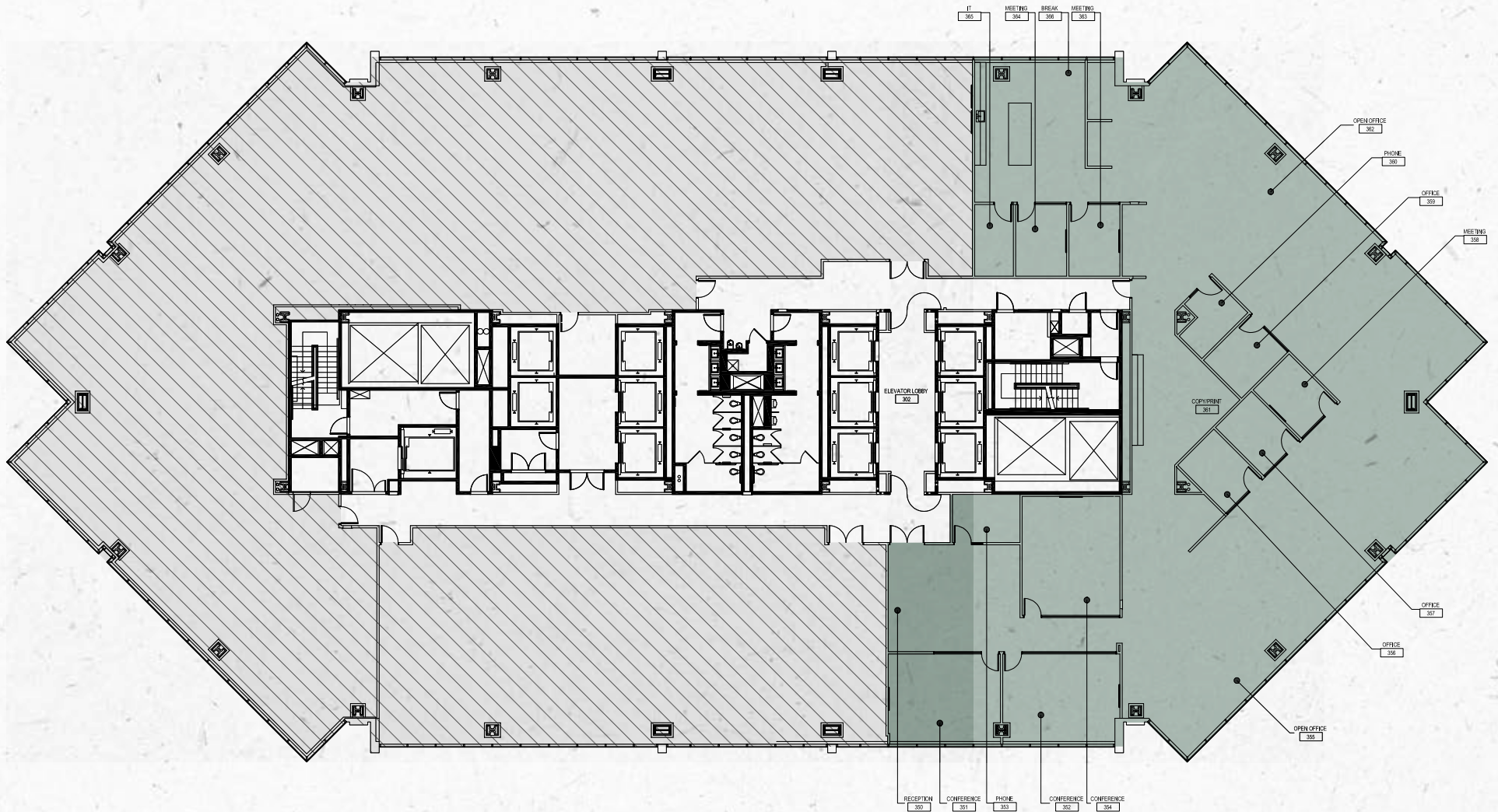
SUITE 350

10,664 RSF

SPEC SUITE

VIRTUAL TOUR HERE

MATTERPORT LINK



Floor plan/site plan not to scale/not exact.

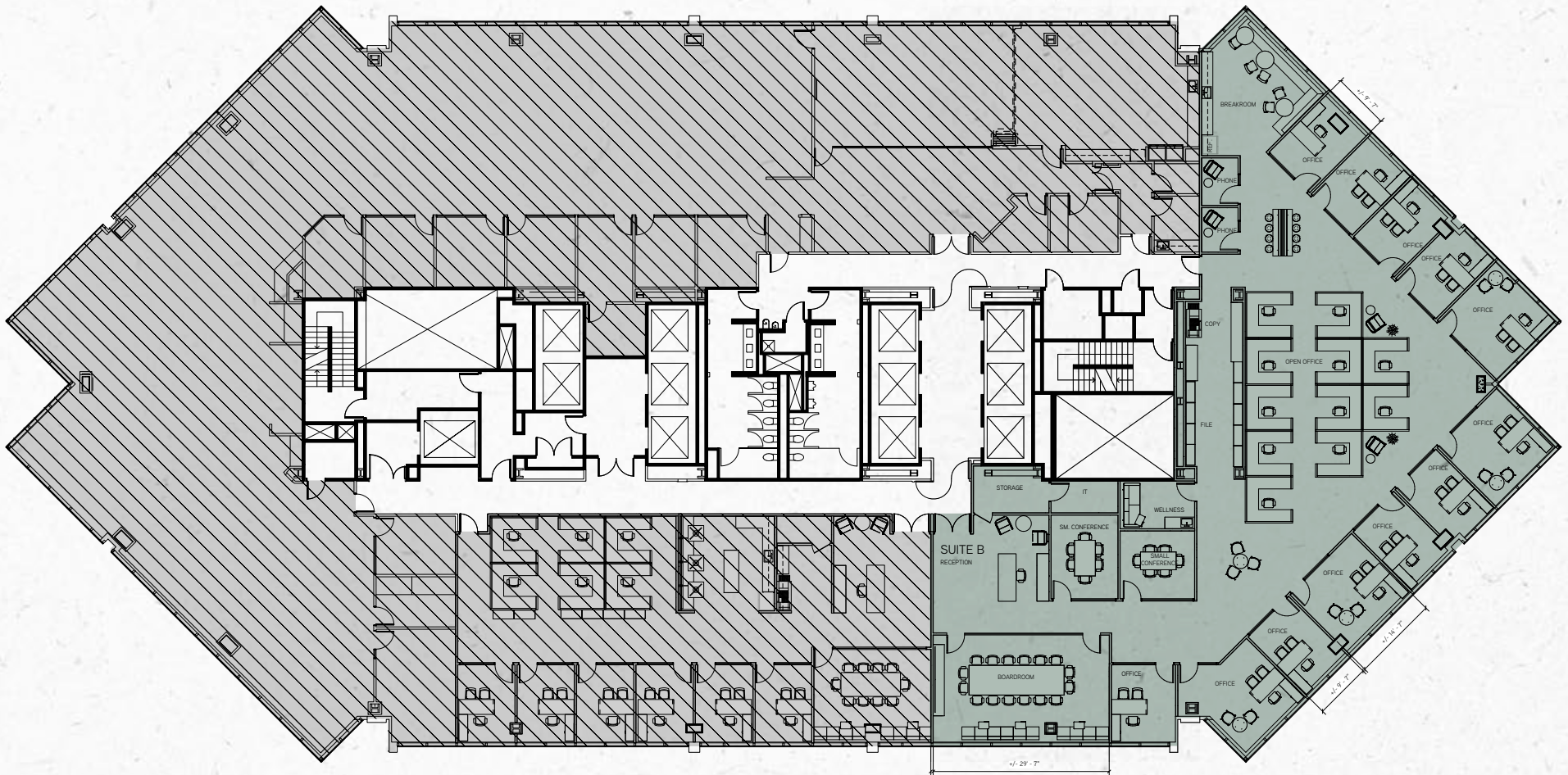
SUITE 450

9,096 RSF

SPEC SUITE

VIRTUAL TOUR HERE

MATTERPORT LINK



Floor plan/site plan not to scale/not exact.

SUITE 450

INTERIORS

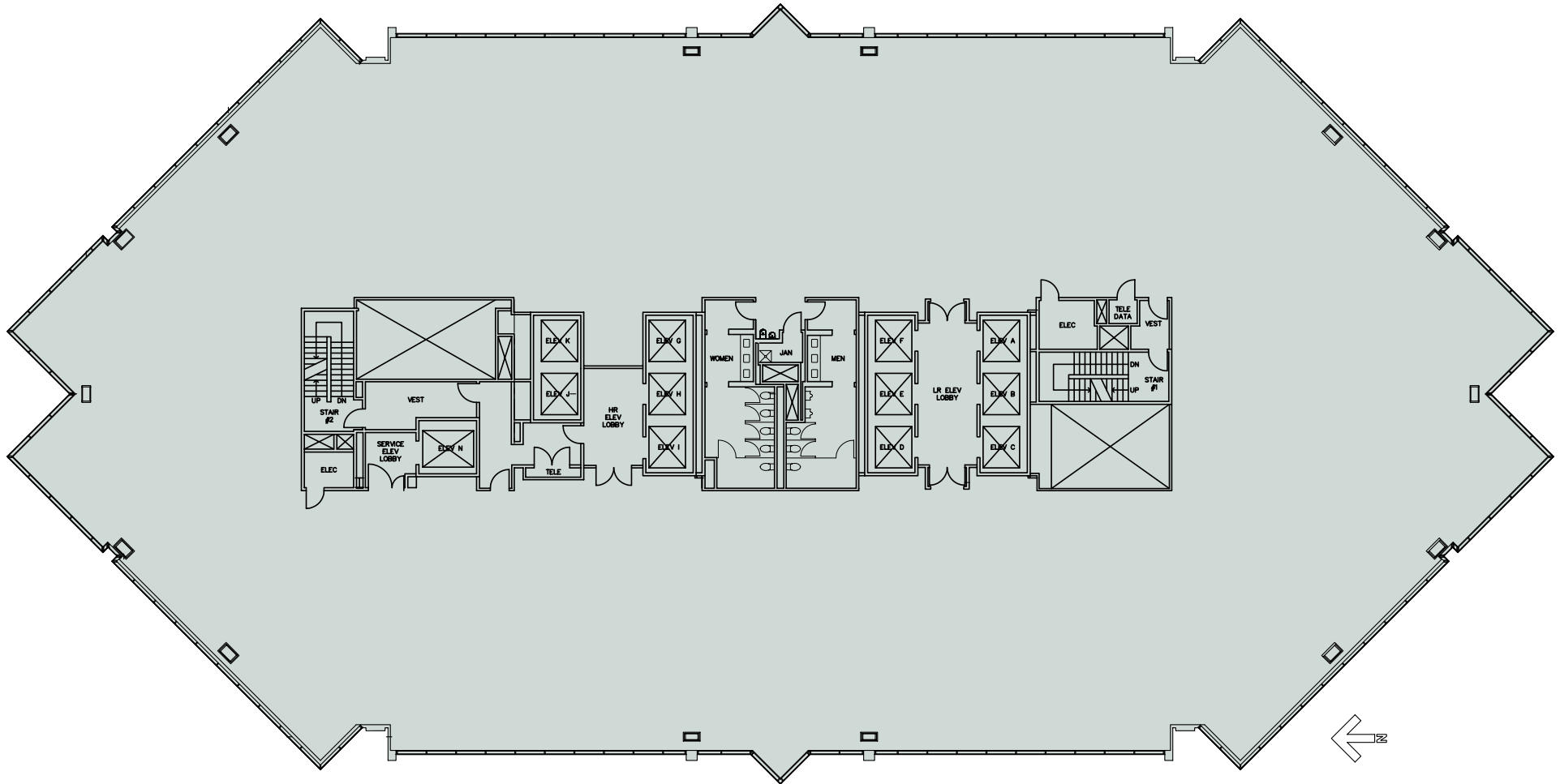


FLOOR PLATE

FLOORS 5-12

VIRTUAL TOUR HERE
(11TH FLOOR PLAN)

MATTERPORT LINK



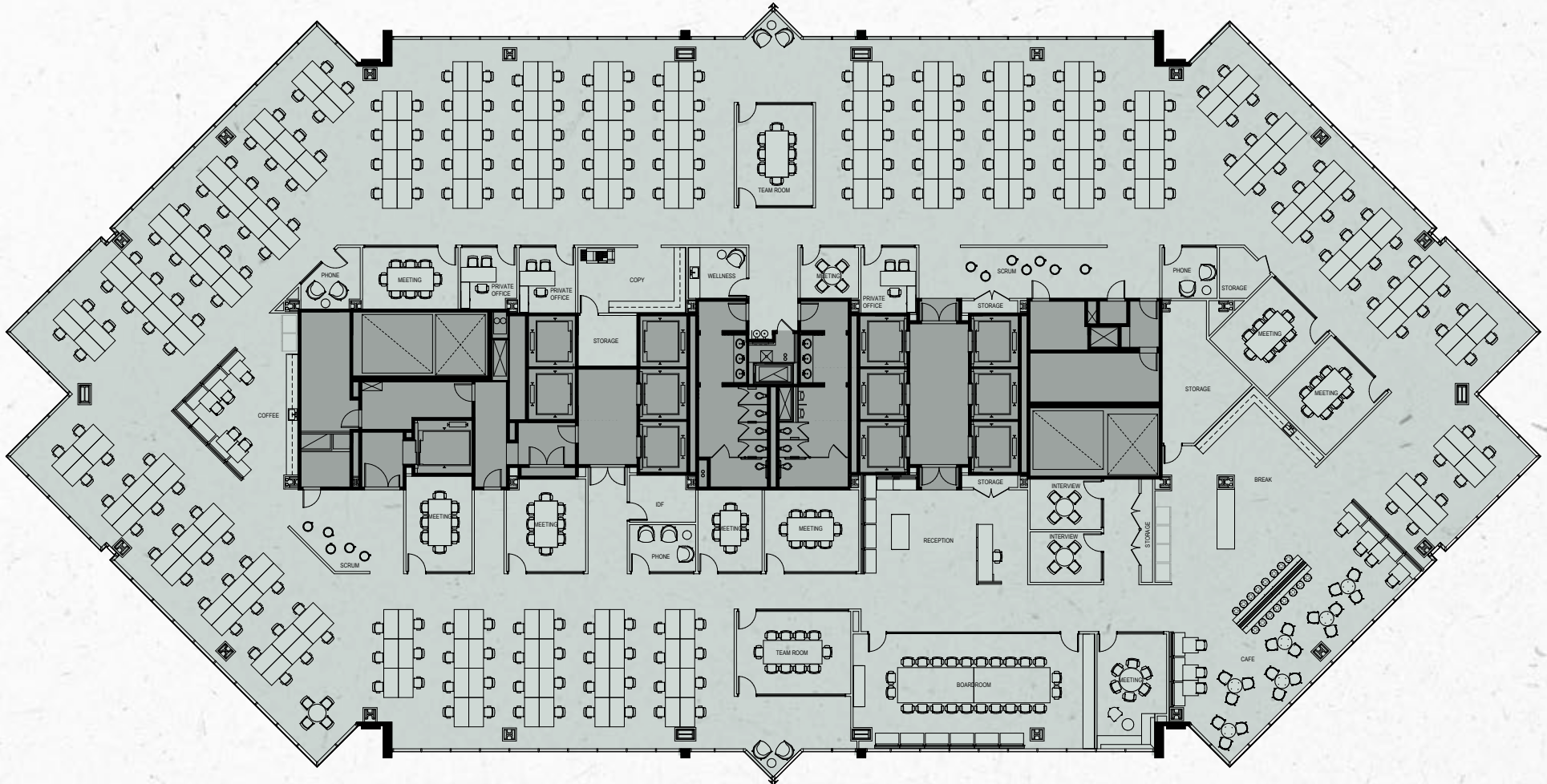
11TH STREET

Floor plan/site plan not to scale/not exact.

HYPOTHETICAL

BLEND OF OPEN AND ENCLOSED WORKSPACES

WORKSTATIONS (5'-0" X 30")	240	RECEPTION	1
OFFICES	3	BREAKROOM	1
		COFFEE	1
		COPY	1
BOARDROOM	1	WELLNESS	1
MEETING	9	STORAGE	6
SCRUM	2	IDF	1
PHONE	3		
TEAM ROOM	2		
INTERVIEW	2		

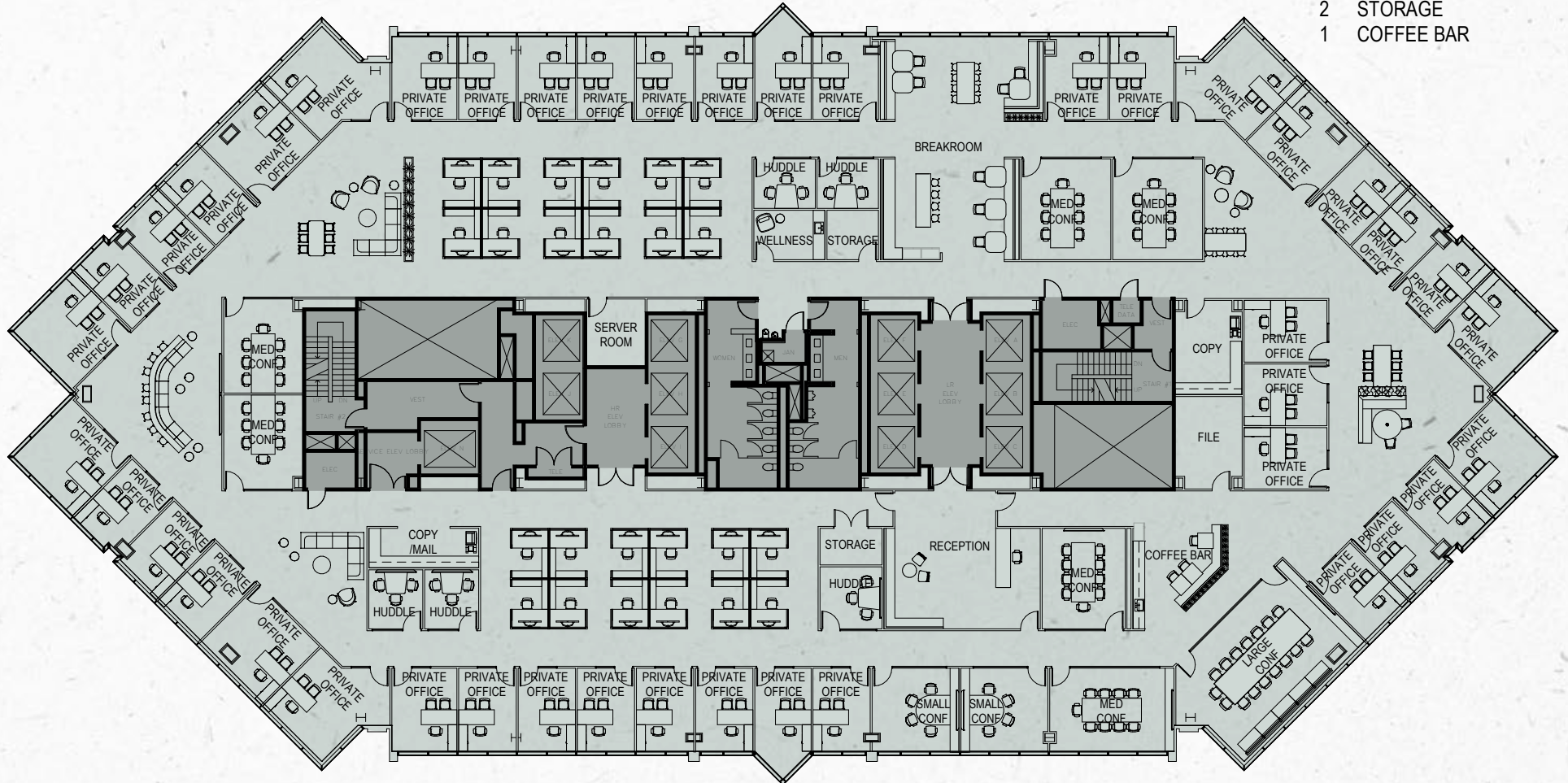


Floor plan/site plan not to scale/not exact.

HYPOTHETICAL

PROFESSIONAL SERVICES WITH ENCLOSED WORKSPACES

- 1 RECEPTION
- 43 PRIVATE OFFICE
- 24 WORKSTATIONS
- 1 LARGE CONFERENCE
- 6 MEDIUM CONFERENCE
- 2 SMALL CONFERENCE
- 5 HUDDLE
- 1 BREAKROOM
- 1 SERVER ROOM
- 2 COPY/MAIL ROOM
- 1 FILE ROOM
- 2 STORAGE
- 1 COFFEE BAR



Floor plan/site plan not to scale/not exact.



A COLLECTIVE OF
WORLD-CLASS DESIGN

601 CITY CENTER IS MORE THAN A WORKPLACE, IT'S A CANVAS SHAPED BY LEADING ARCHITECTS KNOWN FOR PUSHING BOUNDARIES AND REDEFINING MODERN SPACE. THEIR WORK HERE REFLECTS A SHARED COMMITMENT TO **INNOVATION, LUXURY, AND FORWARD-THINKING DESIGN.**

Meet some of the names behind the vision.

FORGE

FORGE
Architecture
forge-arch.com

Gensler

Gensler
Architecture
gensler.com

KSH

Korth Sunseri Hagey
Architects
ksha.com

RMW

RMW
Architecture & Interiors
rmw.com

BUILDING SPECS



NEW CONSTRUCTION / DESIGN

- Double-glazed façade (maximum thermal efficiency)
- Illuminated exterior with rotating color themes (“beacon of light” aesthetic)
- Below-grade parking



ELEVATORS

- 3 Elevator Banks
- 6 Passenger Cabs Serving Floors 2-15
- 5 Passenger Cabs Serving Floors 16-24
- 2 Parking Garage Shuttles
- 1 Freight Elevator Serving All Floors



SECURITY ACCESS

- Card key systems for building entries & passenger elevator cabs
- Garage key card for monthly & after-hours access
- Mobile/Bluetooth capable system



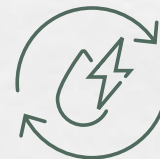
CERTIFICATION/ENERGY

- Integrated MEP systems
- LEED Gold Certification
- WELL Health-Safety Rating
- Energy Star Certified (98)



SEISMIC DESIGN

- 2013 California Building Code
- 2012 International Building Code
- SEI / ASCE 7-10
- Meets upgraded University of California seismic standards



GENERATOR


























- 1300 KW diesel building back-up generator



SLAB-TO-SLAB HEIGHTS

- Floor 2 — 13'6"
- Floors 3-24 — 13'0"

FOOD & DINING

- | | | | |
|--|---|--|--|
| 1

BLUE BOTTLE
COFFEE | 10

POMODORA | 19

LOUISIANA
KITCHEN
POPEYES | 25

SWAN'S
MARKET
OLD OAKLAND |
| 2

sg
sweetgreen | 11

Nobu | 20

BIG GUYS | <i>Annapurnu</i> |
| 3

HIGH
WIRE | 12

OAKLANDIA | 21

SUSHIBAE | <i>delage</i> |
| 4

BOCA
NOVA | 13

Horn
BARBECUE | 22

SANA'A CAFE | <i>LAS QUERRERAS</i> |
| 5

SANA'A CAFE | 14

SUBWAY | 23

TAYLOR'S
Sausage | |
| 6

district | 15

SANDWICHEEZ | 24

Rio California | <i>THE COOK & HER FARMER</i> |
| 7

RATTO'S
International Market & Deli | 16

CUPCAKE
COVE | | |
| 8

PIZZERIA
PIE GUYS | 17

PANDA EXPRESS
CHINESE KITCHEN | | |
| 9

OESTE | 18

CITY CENTER
PIZZERIA | | |



601

601 CITY CENTER
OAKLAND, CA




Contact Us

Charles F. Allen
Executive Vice President
+1 510 333 8477
CA Lic. No. 01158267
charlie.allen@colliers.com

Anthony Shell
Executive Vice President
+1 415 871 5279
CA Lic. No. 01743033
anthony.shell@colliers.com

Amber Merrigan
Senior Vice President
+1 619 757 4912
CA Lic. No. 01905162
amber.merrigan@colliers.com

A photograph of a modern lounge area. In the foreground, there are three contemporary chairs with curved wooden frames and reddish-brown leather seats. Behind them is a light-colored, curved sofa. The background is dominated by a large, vibrant wall sculpture made of numerous small, translucent blue and white cubes, creating a textured, crystalline effect. The lighting is warm and focused on the furniture.

This document/email has been prepared by Colliers for advertising and general information only. Colliers makes no guarantees, representations or warranties of any kind, expressed or implied, regarding the information including, but not limited to, warranties of content, accuracy and reliability. Any interested party should undertake their own inquiries as to the accuracy of the information. Colliers excludes unequivocally all inferred or implied terms, conditions and warranties arising out of this document and excludes all liability for loss and damages arising there from. This publication is the copyrighted property of Colliers and /or its licensor(s). © 2026. All rights reserved. This communication is not intended to cause or induce breach of an existing listing agreement. Colliers International Group Inc.