



## 23112-23118 Hawthorne Blvd

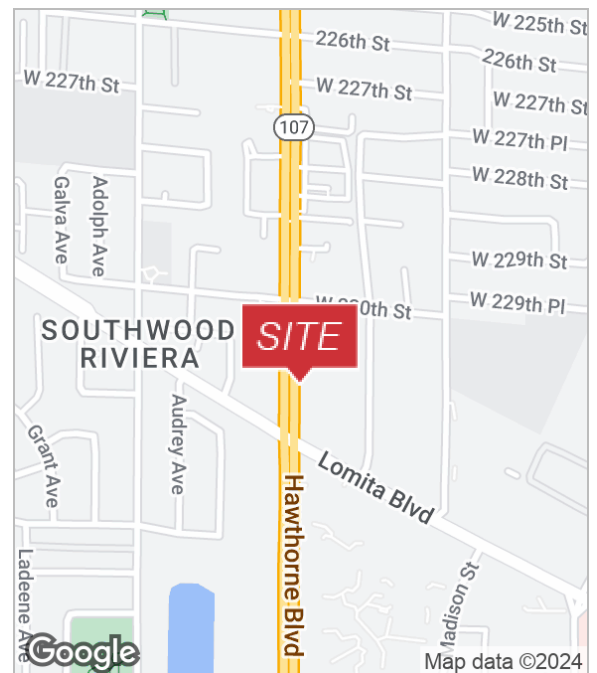
Torrance , California 90505

### Sale Highlights

- High identity free standing retail building facing Hawthorne Boulevard
- Approximately 7,858 SF building plus 1,728 SF of bonus mezzanine & 27,702+/- SF land (per LA County Assessor).
- Owner user or developer opportunity with one month/month tenant & the rest of the building is vacant.
- Strategically located just south of Del Amo Fashion regional mall, Palos Verdes Peninsula, and Beach Cities.
- Minutes away from Torrance Memorial Hospital, medical offices, retail & restaurant establishments, and other shopping centers
- Ideal for medical and retail owner user.

### Traffic Count

Hawthorne Blvd. 67,215 NS	CPD
Lomita Blvd. 35,763 EW	CPD



For more information

**Sheri Messerlian**

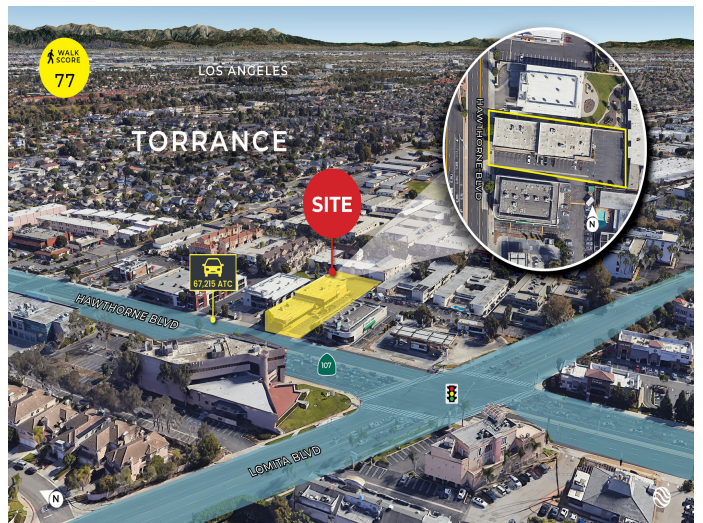
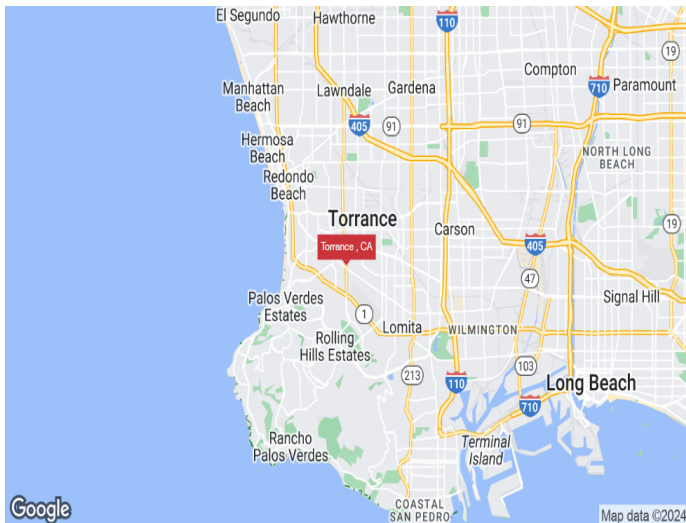
O: 310.436.1762  
smesserlian@naicapital.com | CalDRE #00450571

**Ilmar Kalviste**

O: 310.878.6923  
ikalviste@naicapital.com | CalDRE #01331187

For Sale

23112-23118 Hawthorne Blvd



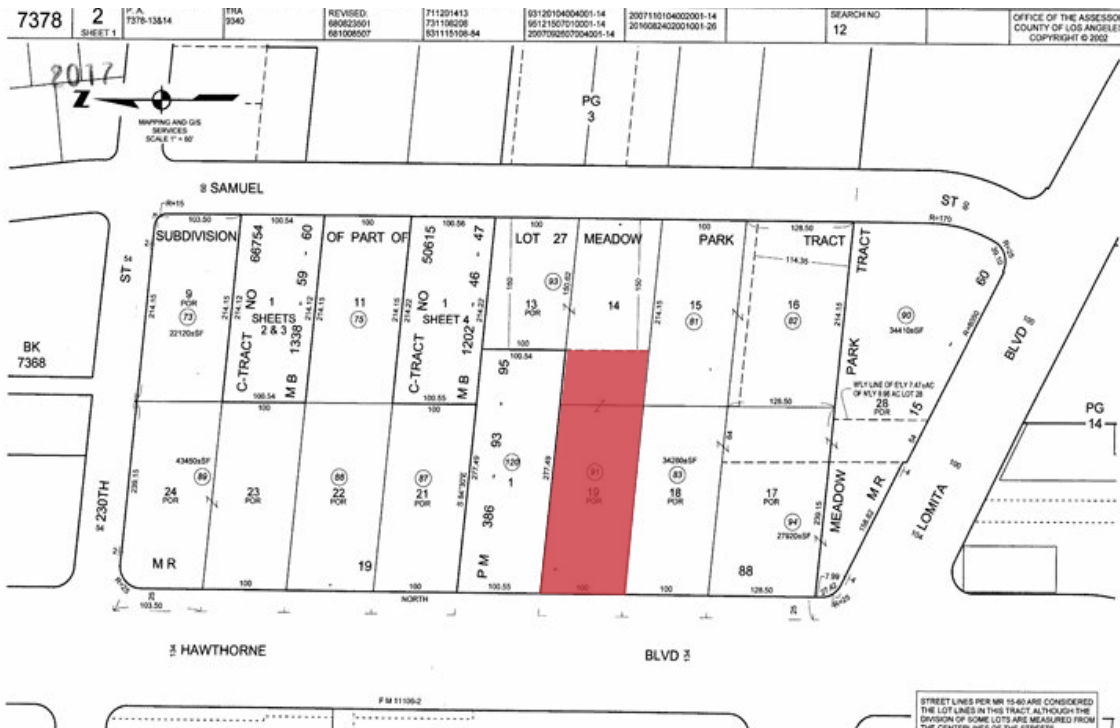
**Sheri Messerlian**  
310.436.1762  
smesserlian@naicapital.com  
CalDRE #00450571

**Ilmar Kalviste**  
310.878.6923  
ikalviste@naicapital.com  
CalDRE #01331187



For Sale

# 23112-23118 Hawthorne Blvd



SITE PLAN  
NOT TO SCALE

No warranty, express or implied, is made as to the accuracy of the information contained herein. This information is submitted subject to errors, omissions, change of price, rental or other conditions, withdrawal without notice, and is subject to any special listing conditions imposed by our principals. Cooperating brokers, buyers, tenants and other parties who receive this document should not rely on it, but should use it as a starting point of analysis, and should independently confirm the accuracy of the information contained herein through a due diligence review of the books, records, files and documents that constitute reliable sources of the information described herein.

**Sheri Messerlian**  
310.436.1762  
smesserlian@naicapital.com  
CalDRE #00450571

**Ilmar Kalviste**  
310.878.6923  
ikalviste@naicapital.com  
CalDRE #01331187



For Sale

23112-23118 Hawthorne Blvd



**Sheri Messerlian**  
310.436.1762  
smesserlian@naicapital.com  
CalDRE #00450571

**Ilmar Kalviste**  
310.878.6923  
ikalviste@naicapital.com  
CalDRE #01331187