

FOR LEASE



ACCESS Commercial, LLC

Lincoln, NE



RARE DRIVE-THRU OPPORTUNITY

PROPERTY HIGHLIGHTS:

- Hard corner opportunity on 48th and Leighton Avenue
- High traffic intersection of 23,742 VPD
- In between University of Nebraska at Lincoln East Campus and Nebraska Wesleyan
- Drive-thru end cap

ADDRESS:

2301 N. 48th Street
Lincoln, NE

LEASE RATE:

\$5,000/ month

BUILDING SIZE:

750 +/- SF
Option to lease additional SF

LOT SIZE:

.68 Acres

CONTACT LISTING AGENTS FOR MORE INFORMATION:

Emily Faltys
emily@accesscommercial.com
C: (402) 992 - 0848

Amber Olson
amber@accesscommercial.com
C: (402) 618 - 5523

WWW.ACCESSCOMMERCIAL.COM

facebook.com/accesscommercial
instagram.com/accessretail
linkedin.com/access-commercial-llc



DEMOGRAPHICS:

	1 Mile:	3 Mile:	10 Mile:
Population	15,330	110,300	206,820
Median HH Income	\$53,434	\$61,712	\$67,221
Daytime Demographics	7,368	79,201	145,755

33.6
MEDIAN
AGE

17,230
VEHICLES
PER DAY

92,123
EMPLOYEES
IN AREA

7,167
BUSINESSES
IN AREA

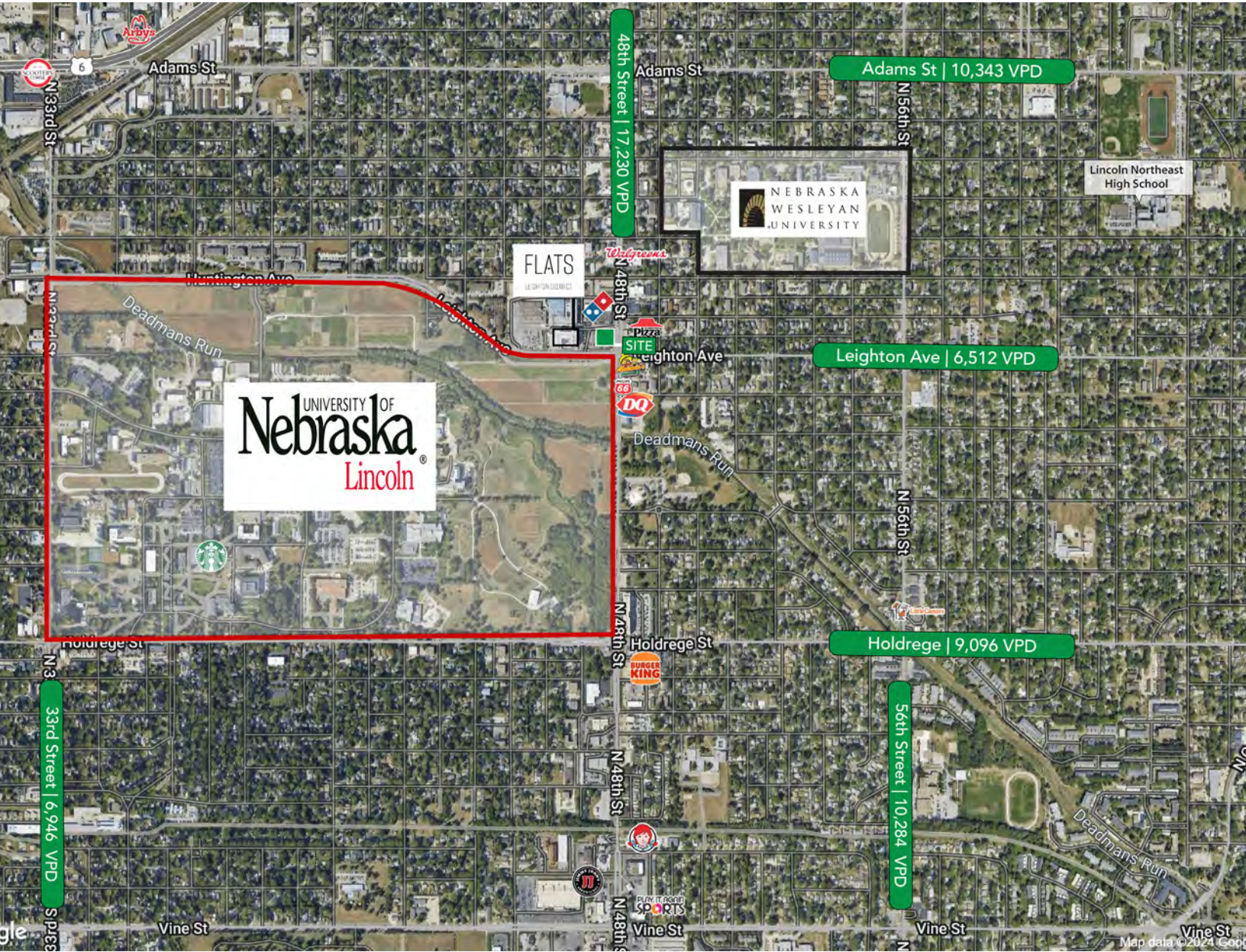
CONTACT LISTING AGENT FOR MORE INFORMATION:

Emily Faltys
emily@accesscommercial.com
C: (402) 992 - 0848

Amber Olson
amber@accesscommercial.com
C: (402) 618 - 5523

WWW.ACCESSCOMMERCIAL.COM





CONTACT LISTING AGENT FOR MORE INFORMATION:

Emily Faltys
 emily@accesscommercial.com
 C: (402) 992 - 0848

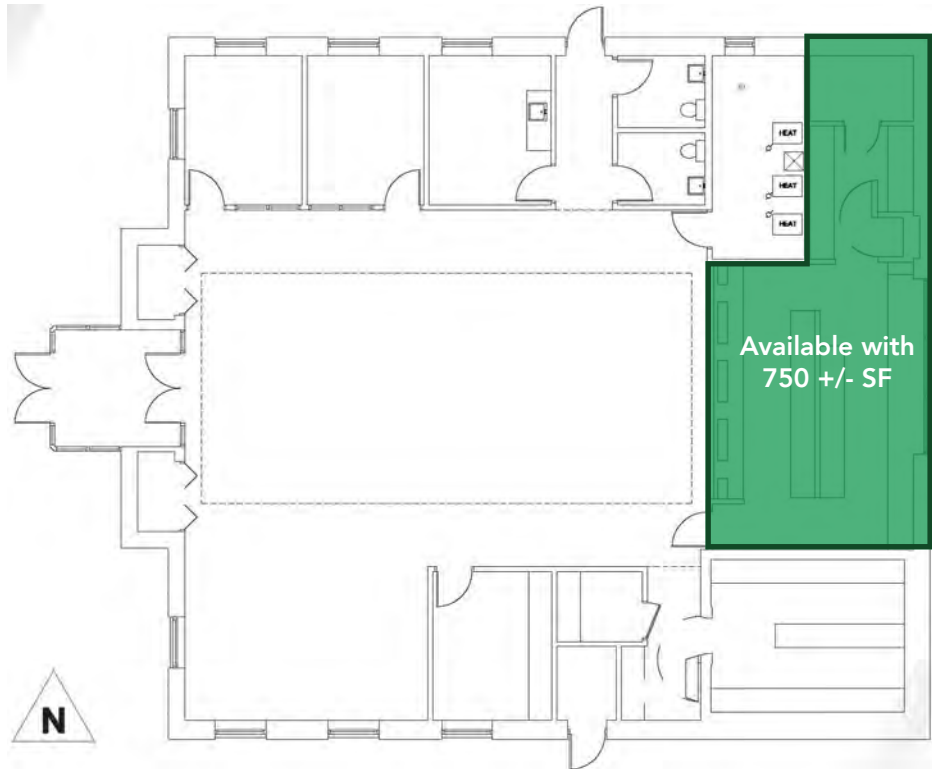
Amber Olson
 amber@accesscommercial.com
 C: (402) 618 - 5523

WWW.ACCESSCOMMERCIAL.COM



ACCESS Commercial, LLC

4 FLOOR PLAN AND INTERIOR PHOTO



CONTACT LISTING AGENT FOR MORE INFORMATION:

Emily Faltys
emily@accesscommercial.com
C: (402) 992 - 0848

Amber Olson
amber@accesscommercial.com
C: (402) 618 - 5523

WWW.ACCESSCOMMERCIAL.COM



ACCESS Commercial, LLC

ABOUT ACCESS

ACCESS is focused on growth opportunities through a select grouping of strategic partnerships. We strive to maximize value for every stakeholder involved in our projects, and have a proven track record of over 400 successfully completed projects across 40 states. We focus on forming deep relationships with our clients and believe durable success in our industry requires the right mixture of talents and virtues, collaboration, and relentless execution.



EMILY FALTYS JR BROKERAGE ASSOCIATE

Emily is a dynamic and motivated graduate from the University of Nebraska-Lincoln, graduating in two and a half years with a Bachelor of Science in Business Administration with a focus on Management and Marketing. During her college career, Emily was a member of the Center for Sales Excellence where she collaborated with peers and mentors focusing on analyzing and improving sales techniques, as well as effective communication. Emily is an avid traveler, independently visiting 17 countries over the course of two years. This experience honed her skills of adaptability, resilience, and has grown her ability to communicate with all individuals. Returning to her Nebraskan roots, Emily supports our Senior Brokerage team at ACCESS throughout the entire listing and transaction processes. She is currently focusing primarily on shopping centers and third-party leasing efforts as a Junior Brokerage Associate.



AMBER OLSON BROKERAGE ASSOCIATE

Amber brings 20 years of commercial real estate experience to our team at ACCESS. Her role as a Senior Brokerage Associate is primarily focused on shopping center leasing at a national and local level, with over three million square feet represented. Her industry expertise enhances our team through her knowledge of sales, landlord and tenant representation, relationship building, property management, and development.

Amber majored in Business Administration at the University of Nebraska-Lincoln. She is a licensed Real Estate Agent in the State of Nebraska and has been a member of the International Council of Shopping Centers (ICSC) since 2008.





CONTACT LISTING AGENTS FOR MORE INFORMATION:

Emily Faltys
emily@accesscommercial.com
C: (402) 992 - 0848

Amber Olson
amber@accesscommercial.com
C: (402) 618 - 5523

WWW.ACCESSCOMMERCIAL.COM

 facebook.com/accesscommercial
 instagram.com/accessretail