



410 NW 16TH AVENUE GAINESVILLE, FL
32601

RETAIL/OFFICE SPACE

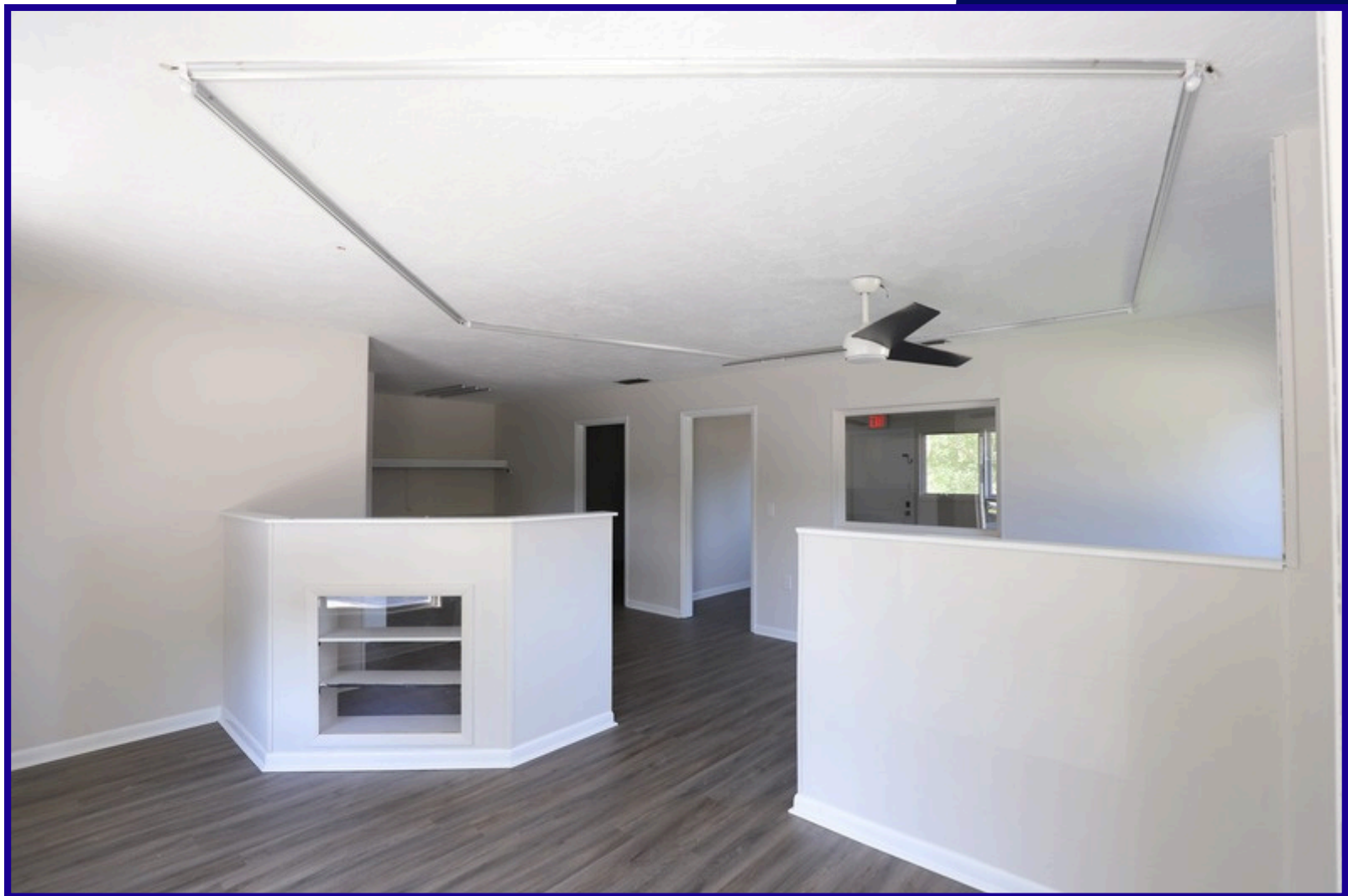
\$1,400/MONTH GROSS LEASE



WWW.PORTALGAINESVILLE.COM



410 NW 16TH AVENUE GAINESVILLE, FL 32601



Step into a centrally located end cap retail/office space perfect for growing and flourishing businesses. This space features a built-in service/retail counter, 2 private offices, and plenty of storage space in a fully occupied retail plaza.



PROPERTY HIGHLIGHTS



- Location: Located in a plaza home to several existing local businesses
- 800 SF of Space: Ideal for retail, office, or service-based businesses.
- Versatile Use: Suitable for local, regional, or national tenants.
- Move-In Ready: Available now and ready for occupancy.
- Management: Quick, responsive, and reliable property management



INTERIOR





FIRST AVENUE CENTRE

410 NW 16TH AVENUE
GAINESVILLE, FL 32601





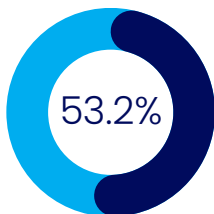
DEMOGRAPHICS

410 NW 16TH AVENUE GAINESVILLE, FL 32601

Within 1 Mile From Subject Property



Population and People
Total Population
22,039



Employment
Employment Rate
53.2%



Business and Economy
Total Employer Establishments
786



Income and Poverty
Median Household Income
\$30,878



Housing
Total Housing Units
3,166



Families and Living Arrangement
Total Households
10,113

2024 Census Data



CONTACT US

FOR MORE INFORMATION



Senior CRE Specialist
Teresa Callen

teresa@portalgainesville.com



CRE Specialist
Derek Callen

derek@portalgainesville.com

352.871.5865

352.256.7532

352.284.0124

WWW.PORTALGAINESVILLE.COM