



REVISIONS	
No.	Date

© 2024 ROTHE ARCHITECTURE + PLANNING

**OFFICE SUITES**

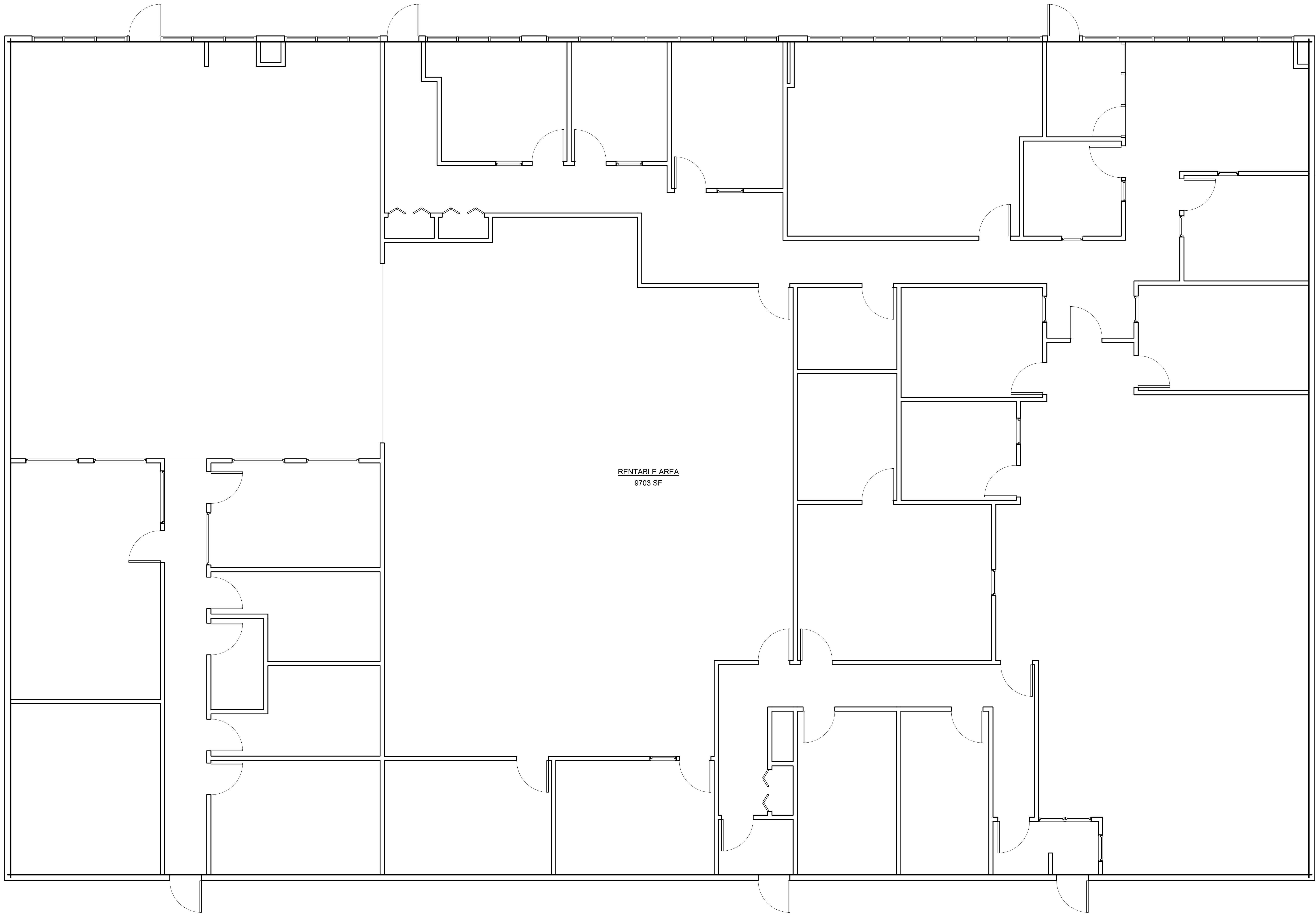
105 KLM DR. JOHNSON CITY TN. 37601

**AREA PLAN**



112 E. MYRTLE AVE. STE 105  
JOHNSON CITY, TN 37601  
OFFICE: 423.202.7615  
PLANS@ROTHEARCHITECTURE.COM

01/27/2025  
1/4" = 1'-0"  
**A1.1**



RENTABLE AREA  
9703 SF

FLOOR PLAN  
1/4" = 1'-0"

REVISIONS	
No.	Date

© 2024 ROTHE ARCHITECTURE  
+ PLANNING

OFFICE SUITES

105 KLM DR. JOHNSON CITY TN. 37601

AREA PLAN - RENTABLE



112 E. MYRTLE AVE. STE 105  
JOHNSON CITY, TN 37601  
OFFICE: 423.202.7615  
PLANS@ROTHEARCHITECTURE.COM

01/27/2025

1/4" = 1'-0"

A1.2