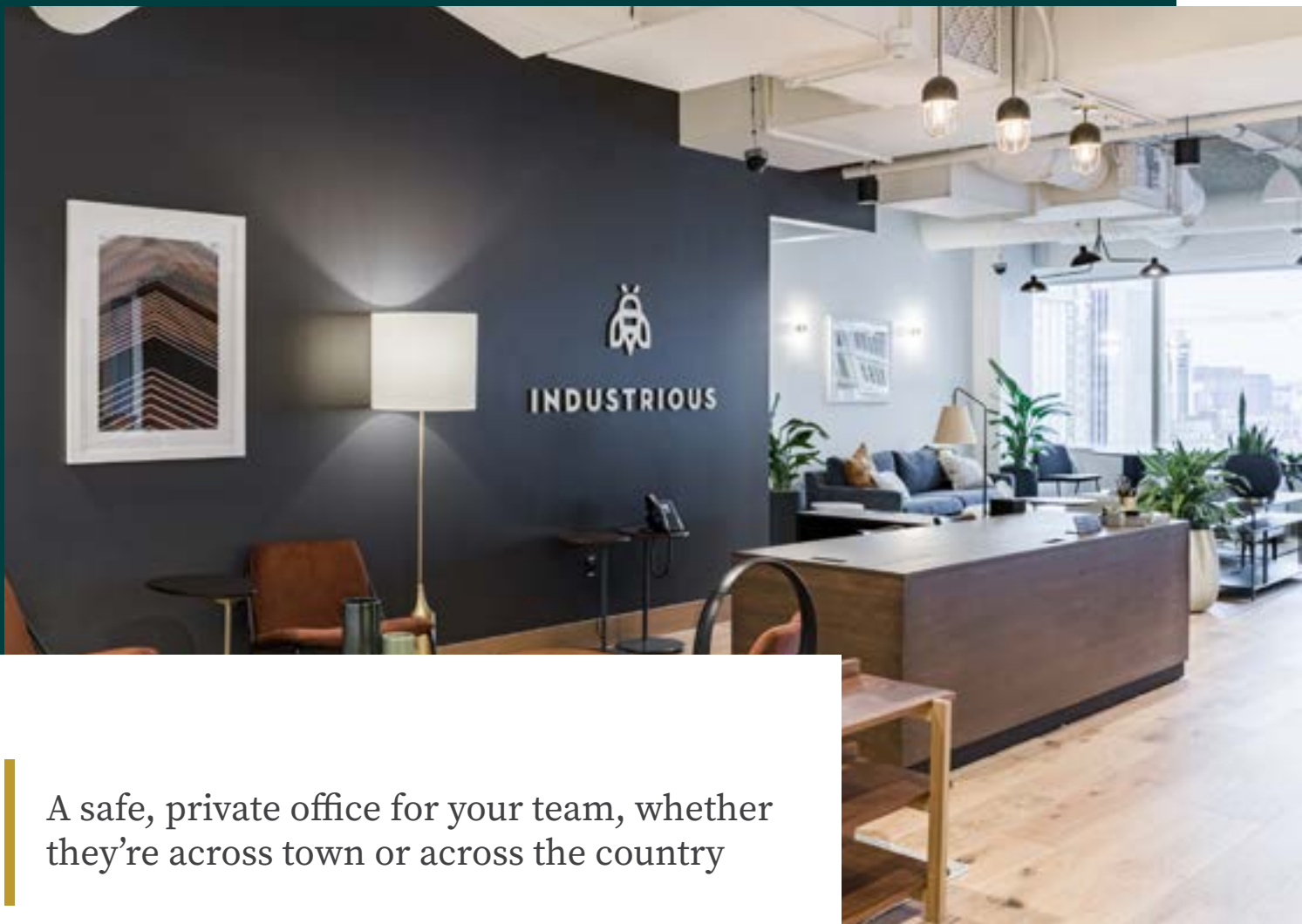


 **INDUSTRIOUS**

Two Liberty Place

50 SOUTH 16TH STREET, PHILADELPHIA



A safe, private office for your team, whether they're across town or across the country

TWO LIBERTY PLACE

Thoroughly professional and thoughtfully designed, the flexible workplaces at Industrious Two Liberty Place support teams of all sizes and stages — from startups to Fortune 500s.

Industrious offers month-to-month terms to make it easy to scale or adapt your space as your business evolves. And with all-inclusive fees, you'll always have access to the resources your team needs to thrive — without paying extra.

TWO LIBERTY PLACE

Set up your workspace in a newly-renovated building in the heart of Rittenhouse Square, featuring a conference center, on-site gym, amazing city views, and direct access to unbeatable retail and restaurants. In your office space, enjoy access to all-inclusive membership perks that keep your team engaged, connected, and excited to come to the office.



All-Inclusive Membership

AMENITIES

- Wellness Room
- Private Conference Rooms
- Office Supplies
- Unlimited Color Printing
- Fast, Secure Wi-Fi

SERVICES

- Mail and Packaging
- Community Events
- Daily Breakfast & Craft Coffee
- Dedicated Community Manager
- Professional-Grade Cleaning

BUILDING AMENITIES

- Fitness Center
- Event Space
- Dining Options



Find Your Space at Two Liberty Place

AVAILABILITIES AND OFFERINGS

From 1-579 desks available

Individual suites as large as 24 desks

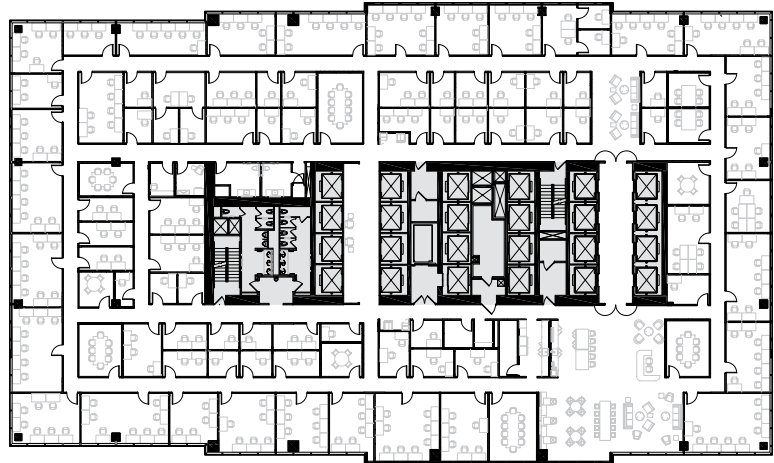
MAINTAINING A SAFE AND HEALTHY WORKPLACE

Industrious' new health and safety guidelines include enhanced cleaning protocols, updated layouts & reduced capacity, and one-way walking paths.

SUITES (FLOOR 18)

A fully-furnished office suite designed for teams who want their own space. This customizable workspace includes its own private reception, executive offices, conference rooms, and phone booths.

17TH FLOOR



18TH FLOOR



OFFICES

An enclosed, locked, private office, located in an Industrious location. Fully-furnished and move-in ready with access to premium services and amenities.



DEDICATED DESKS

A desk of your own within a locked, private office. Comes move-in ready, with access to common spaces, such as conference rooms and phone booths, as well as premium services and amenities.



OASIS MEMBERSHIPS

A monthly membership plan that lets you work from Industrious while only paying for the days you use — even if you come in just once or twice a week. Includes access to private conference rooms and phone booths, as well as premium services and amenities.



15th St Station: 2 blocks, **Suburban Station:** 3 blocks, **30th St Station:** 10 blocks



Philadelphia International Airport: 10 miles

TWO LIBERTY PLACE

There's a reason people love Rittenhouse Square. Whether living there, working there, dining, shopping, or visiting, its vibrancy has made it a well-known hotspot in the City of Philadelphia. And you can be part of that at Industrious Two Liberty Place.

● HOTELS

- The Westin Philadelphia
- Club Quarters Hotel
- Sonesta Philadelphia Downtown Rittenhouse
- Kimpton Hotel Palomar
- Softel Philadelphia at Rittenhouse Square
- Warwick Hotel Rittenhouse Square

● EAT & DRINK

- SoBol
- Dig Inn
- Honeygrow
- Konditori Coffee

- Just Salad
- CAVA
- Sweetgreen
- Oyster House
- Goldie
- Marathon Grill
- Snap Custom Pizza
- Davio's Steakhouse

● RETAIL

- Shops at Liberty Place (concourse)
- DiBruno Bros.
- UNIQLO
- Nordstrom
- Walnut St. Retail Corridor

Alex Breitmayer
Executive Vice President
+1 267 303 6755
alex.breitmayer@am.jll.com

David Healy
Executive Vice President
+1 215 988 5555
david.healy@am.jll.com

Regan Rich
Associate
+1 484 790 1909
regan.rich@am.jll.com

JLL | Jones Lang LaSalle Brokerage, Inc.
1650 Arch Street, suite 2500
Philadelphia, PA 19103
+1 215 988 5500

Although information has been obtained from sources deemed reliable, neither Owner nor JLL makes any guarantees, warranties or representations, express or implied, as to the completeness or accuracy as to the information contained herein. Any projections, opinions, assumptions or estimates used are for example only. There may be differences between projected and actual results, and those differences may be material. The Property may be withdrawn without notice. Neither Owner nor JLL accepts any liability for any loss or damage suffered by any party resulting from reliance on this information. If the recipient of this information has signed a confidentiality agreement regarding this matter, this information is subject to the terms of that agreement. ©2022. Jones Lang LaSalle IP, Inc. All rights reserved.

