

FOR LEASE

7845 Oakwood Rd, Glen Burnie, MD 21061



**Conveniently Located
Medical Offices**

William Steffey, CRE, CCIM

443.332.6383
bsteffey@hyattcommercial.com

Laurie Murphy-Zuiderhof

443.756.5102
laurie@hyattcommercial.com

Treva Ghattas

301.991.6334
treva@hyattcommercial.com

HIGHLIGHTS

- Fully built out medical spaces
- Thriving MOB with a variety of specialty practices
- Near UMD Baltimore Washington Medical Center
- Easy access to Rt 100 and I-97
- Abundant parking
- New Local Ownership

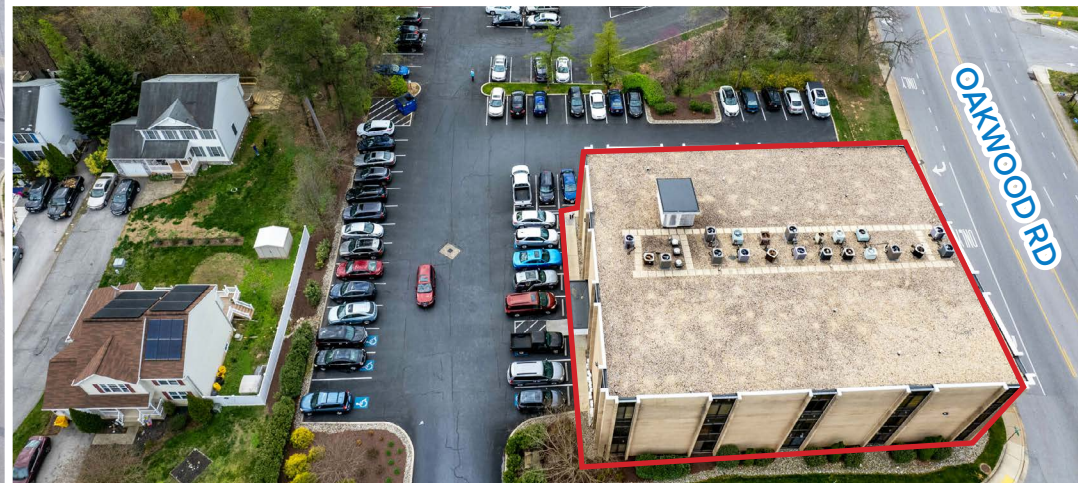
OFFERING

FOR LEASE

OFFICE



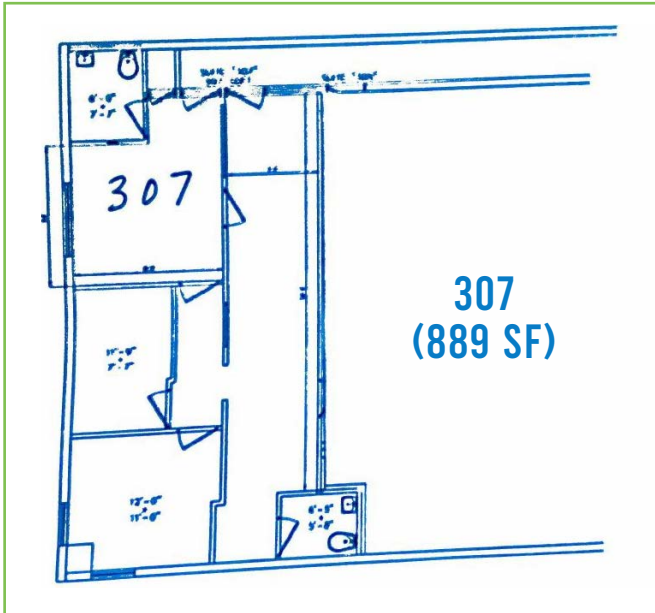
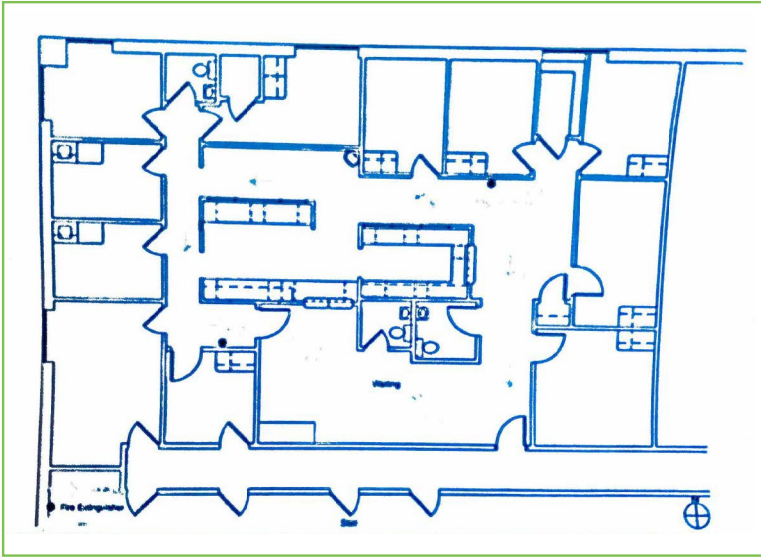
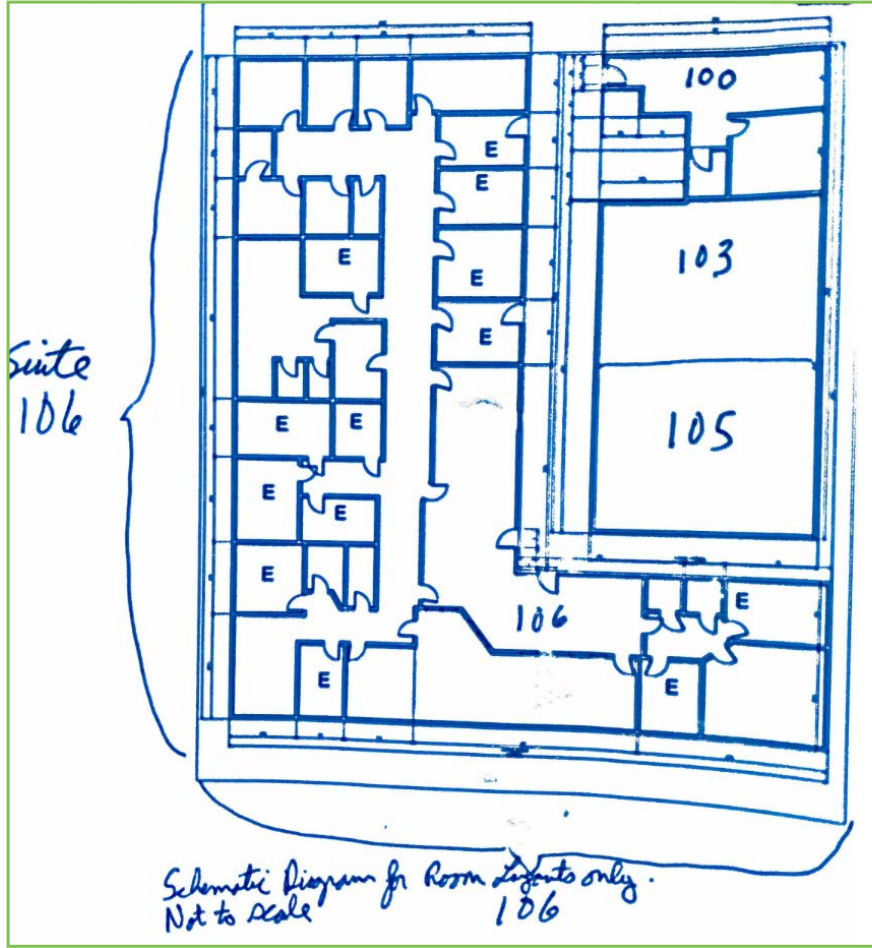
Building Size:	+/- 27,000 SF
Total Lot Size:	1.8 Acres
Suite 100	375 SF
Suite 106	4,964 SF
Suite 202 - 204	2,399 SF
Suite 305	700 SF
Suite 307	889 SF



FLOOR PLAN

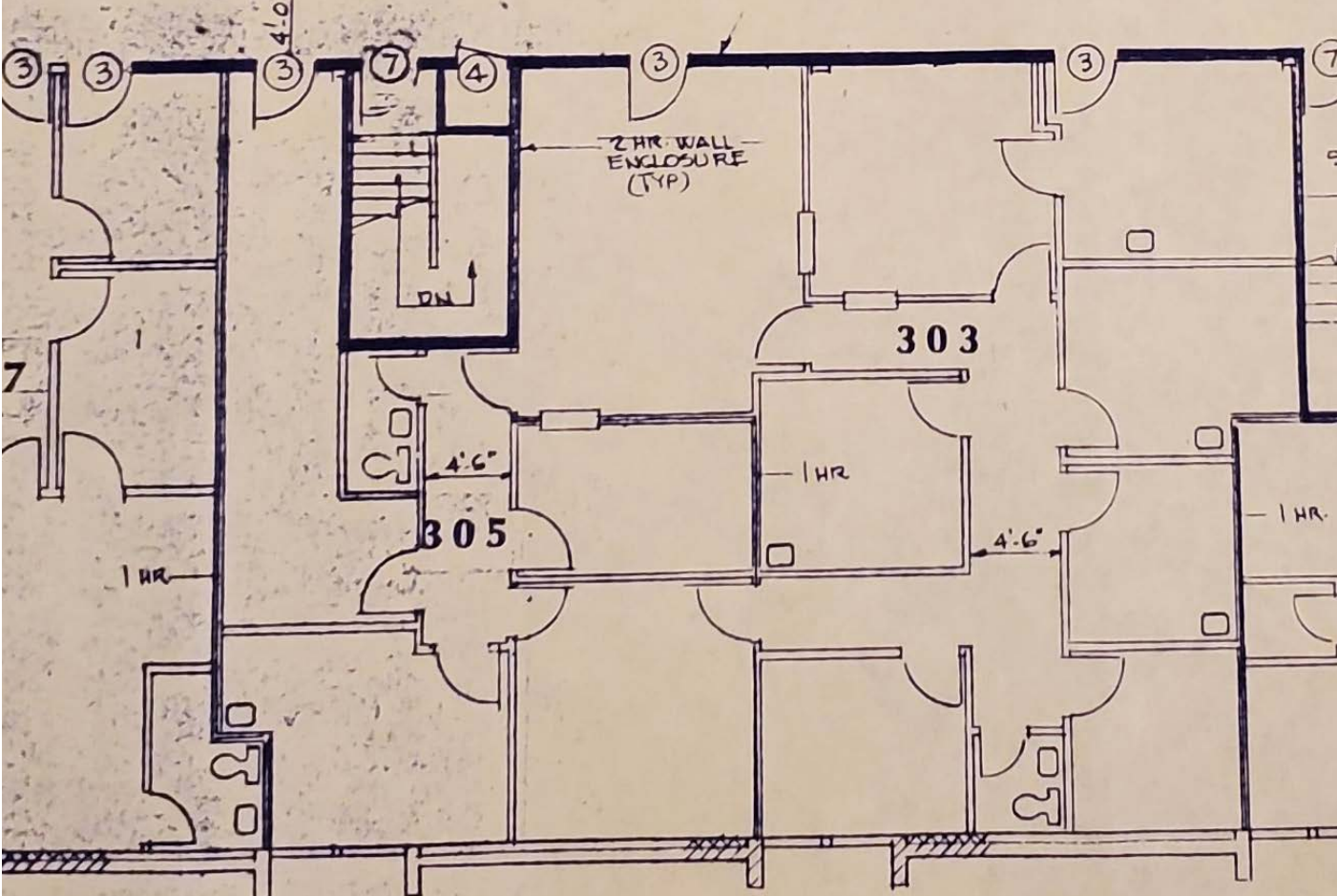


202-204
(2,399 SF)



100 & 106
(375 & 4,694 SF)

FLOOR PLAN



305
(700 SF)

Glen Burnie High School

Corkran Middle School

Oakwood Elementary School

7845 OAKWOOD RD









THE HOME DEPOT

Quarterfield Crossing Shopping Center









UNIVERSITY of MARYLAND BALTIMORE WASHINGTON MEDICAL CENTER

Old Mill Senior High School















Archbishop Spalding High School











HYATT COMMERCIAL REAL ESTATE BROKER THE RELIABLE GROUP



REGIONAL MAP





- 60 Minutes Drive to Washington, DC
- 25 Minutes Drive to Baltimore
- 30 Minutes Drive to Annapolis



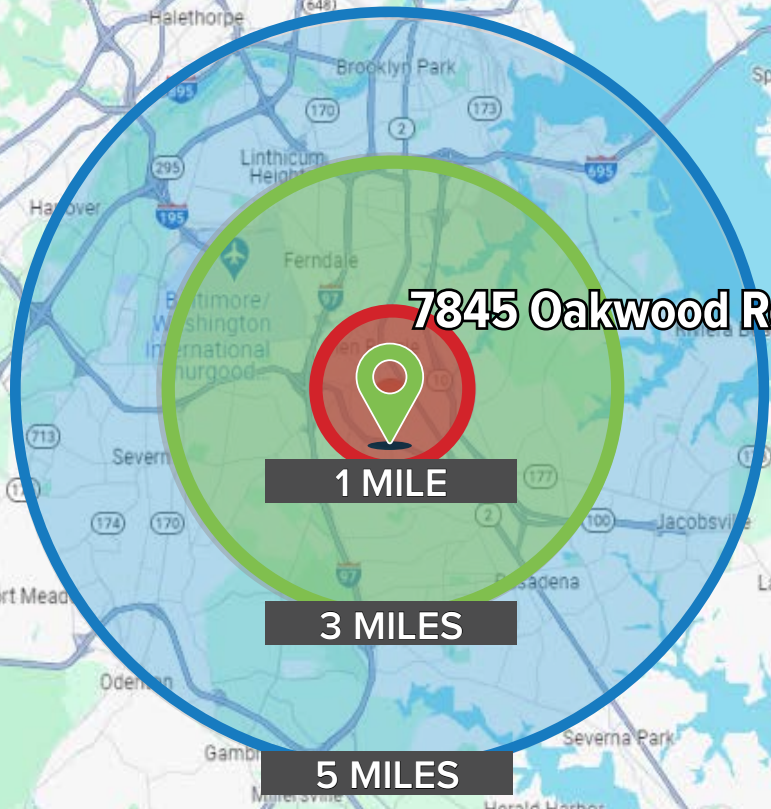
DEMOGRAPHICS



2023 SUMMARY	1 MILE	3 MILES	5 MILES
Population	19,256	92,584	198,180
Households	7,698	35,249	73,097
Families	4,503	22,935	50,272
Average Household Size	2.49	2.61	2.69
Owner Occupied Housing Units	3,938	23,056	54,136
Renter Occupied Housing Units	3,760	12,193	18,961
Median Age	37.4	38.6	39.1
Median Household Income	\$75,991	\$87,764	\$101,058
Average Household Income	\$104,51	\$120,559	\$134,173

 198,180 Population	 2.69 Average HH Size	 39.1 Median Age	 \$101,058 Median HH Income
---	---	--	---

VIEW FULL REPORT



CONTACT

HYATT COMMERCIAL
410-266-8800
2568A Riva Rd., Annapolis, MD 21401

William Steffey, CRE, CCIM
443.332.6383
bsteffey@hyattcommercial.com

Laurie Murphy-Zuiderhof
443.756.5102
laurie@hyattcommercial.com

Treva Ghattas
301.991.6334
treva@hyattcommercial.com

