

Golf World • 2 No. Milton Rd.

Saratoga Springs, NY

24 Acres • 557' Road Frontage • Zoned R2



* Survey on Reverse side

Parcel Number: 414289 164.-1-38.111
MLS # 202410062

Be the second owner of the thriving, locally renowned Golf World Driving Range in Saratoga Springs just 4 miles from Broadway off Route 29 with Additional Acreage & Potential!

The proud owners are offering their successful, established business and property completely turn-key after more than two decades of operation. Hundreds of regulars visit monthly, many weekly and some daily! All appreciate it's impeccable condition and easy access.

With 21 bays, a clubhouse with restroom, and an automated ball dispenser, business is hopping dawn til dusk 3 seasons of the year with minimal client interaction. All maintenance equipment is included from the obviously crucial picker, mower, and ball washers to the less obvious but equally imperative tools.

Meticulously maintained since its inception, there is still much potential for expansion here. With 24 total acres there is a large undeveloped wooded area in the rear of the property. Located just off Route 29, DOT reports 10,100+ vehicles pass per day offering unmatched visibility.

Potential Revenue Builders:

- Additional Bays, Possibly Two Story
- Add Roof, Lighting/Heaters for Longer Hours
- Miniature Golf Course (plans developed, can be transferred with sale)
- Frisbee Golf Course
- Pro Shop
- Par 3/4 Training Site
- Indoor Golf Training/Simulators
- Ice Cream/Cafe/Snack Bar
- Batting Cages/Putting Green
- Different Industry: Storage Units/Subdivision of Land for New Construction
- Solar Farm

Note: All of these Ideas are Speculative by Owners and Would Require Town Review/Approval.

Contact us today for more information. Proof of funds/qualifications and a signed confidentiality agreement are required to review financials.

Seller is willing to stay on for first season if desired.



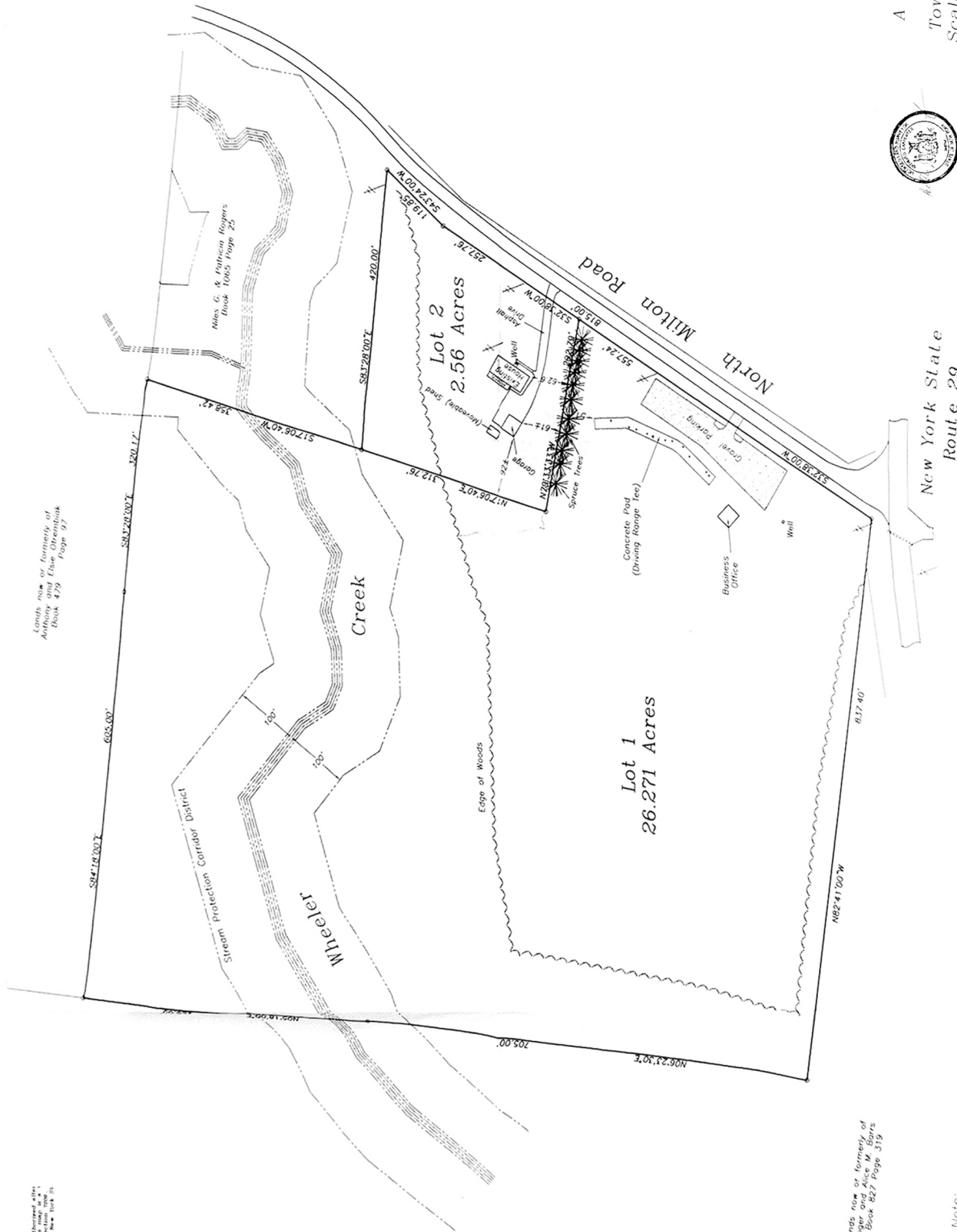
cartier
REAL ESTATE GROUP

COMMERCIAL

Melissa Cartier
Real Estate Broker
cell: 518-321-5762
Melissa@TheCartierGroup.com

Manufactured after
the date of the
original map
of the New York
State

Lands now or formerly of
Alice and Roger
Book 473
Page 97



Lands now or formerly of
Roger and Alice W.
Book 527 Page 319

Note:
The two new parcels created by this subdivision have been
created by the subdivision of the lands of Roger and Alice W.
Subdivision must meet the comprehensive zoning and dimensional
requirements of the current Town of Milton Zoning Code.

Revised 18 November 2003. Note added regarding One-Year Exemption.



New York State
Route 29

A Minor Subdivision of Lands of
Terry Minsch
Town of Milton, Saratoga Co., N.Y.
Scale: 1"=100' 23 September 2003

Surveyed by
Operator Associates P.C. - Cortland, N.Y. - (609) 862-9774

Map Reference:
See a map entitled "Map of lands of
Terry Minsch" dated 18 November 2003
and filed in the Saratoga County Clerk's Office on Map B-119.
Tax Map Section 144 00 Block 1 Lot 381

