



GROUND MATRIX



FOR LEASE

FINANCIAL  
DISTRICT  
OFFICE SPACE  
OPPORTUNITY

at

686

SACRAMENTO ST

San Francisco, CA 94111



Presented By:

**Jake Levinson**

415.786.4303  
jake@groundmatrix.com  
CalDRE #02021931

**Alex Fee**

209.981.7753  
alex@groundmatrix.com  
CalDRE #02018515

**Clayton Demski**

415.246.6999  
clayton@groundmatrix.com  
CalDRE #02117089

FOR LEASE | OFFICE BUILDING

Property Summary



## PROPERTY DESCRIPTION

686 Sacramento is a unique opportunity bringing spacious, recently remodeled office space to San Francisco's historic Financial District. The space available is 2,200 SQFT on the second floor, featuring high ceilings, big windows, and significant natural light throughout. Office layout includes a communal & open workspace room, four private office / conference rooms, kitchen, pantry and two restrooms including one shower room.

## PROPERTY HIGHLIGHTS

- Newly Renovated
- Hardwood Floors
- Natural Light Throughout
- High Ceilings
- Air Conditioning
- 4 Private Offices
- Kitchen
- 2 Restrooms (1 including shower room)

### Jake Levinson

415.786.4303  
jake@groundmatrix.com  
CalDRE #02021931

### Alex Fee

209.981.7753  
alex@groundmatrix.com  
CalDRE #02018515

### Clayton Demski

415.246.6999  
clayton@groundmatrix.com  
CalDRE #02117089

## OFFERING SUMMARY

Lease Rate: Negotiable

Lease Type: MG

## SPACES

## SPACE SIZE

| SPACES           | SPACE SIZE |
|------------------|------------|
| 2nd Floor Office | 2,200 SF   |

## LOCATION DESCRIPTION

The Financial District is the historic center of business activity in San Francisco. It is home to the city's largest concentration of corporate headquarters, law firms, insurance companies, real estate firms, savings and loan banks, and other financial institutions. The Financial District contains some of the city's most iconic buildings, including the Transamerica Pyramid, 555 California Street (formerly Bank of America Center), 101 California Street, and Embarcadero Center. These skyscrapers are heavily tenanted by many Fortune 500 firms including Wells Fargo, Citigroup, and Amazon's Twitch division.



# 686

FINANCIAL DISTRICT OFFICE SPACE OPPORTUNITY

## SACRAMENTO STREET

San Francisco, CA 94111



GROUND MATRIX

FOR LEASE | OFFICE BUILDING

Additional Photos



**Jake Levinson**

415.786.4303  
jake@groundmatrix.com  
CalDRE #02021931

**Alex Fee**

209.981.7753  
alex@groundmatrix.com  
CalDRE #02018515

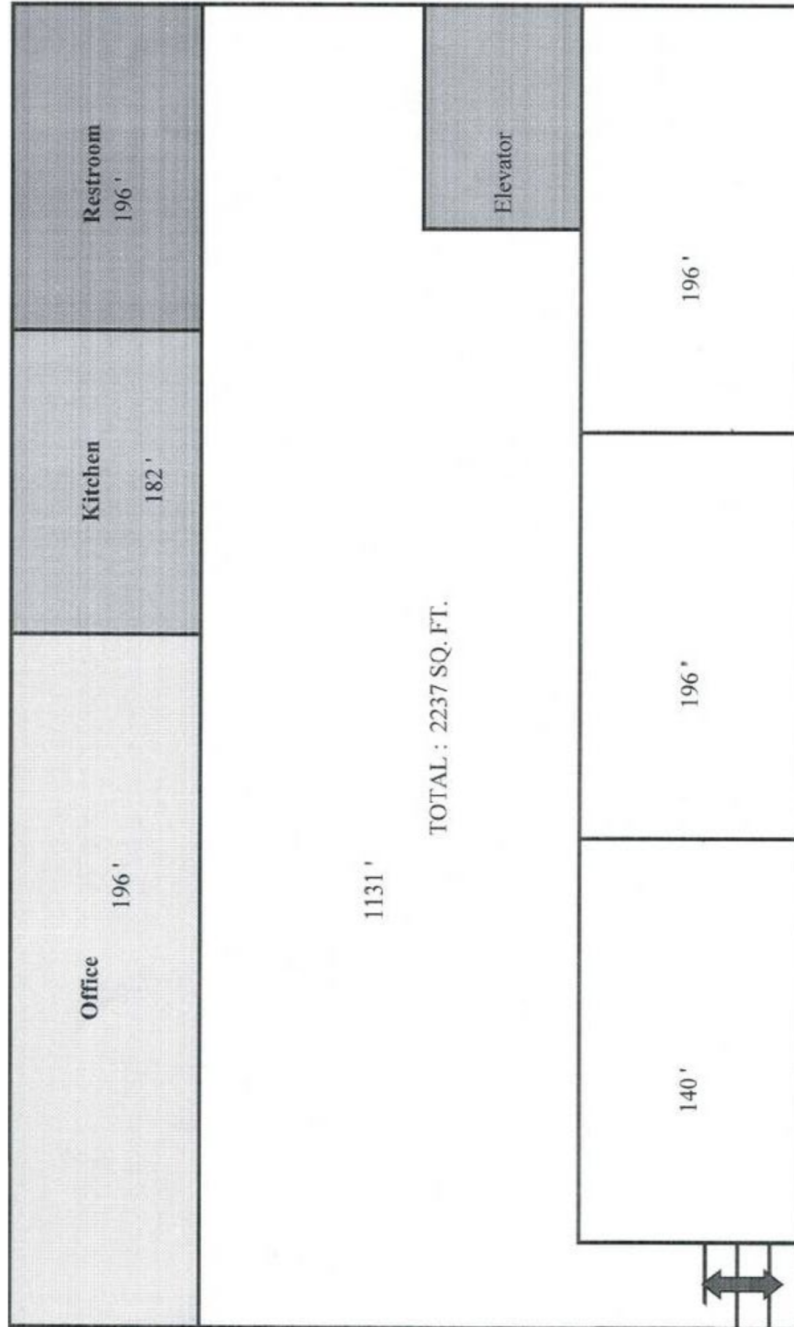
**Clayton Demski**

415.246.6999  
clayton@groundmatrix.com  
CalDRE #02117089



FOR LEASE | OFFICE BUILDING

Floor Plans



Note: Elevator Access Not Included

**Jake Levinson**

415.786.4303  
jake@groundmatrix.com  
CalDRE #02021931

**Alex Fee**

209.981.7753  
alex@groundmatrix.com  
CalDRE #02018515

**Clayton Demski**

415.246.6999  
clayton@groundmatrix.com  
CalDRE #02117089

# 686

FINANCIAL DISTRICT OFFICE SPACE OPPORTUNITY

## SACRAMENTO STREET

San Francisco, CA 94111



GROUND MATRIX

FOR LEASE | OFFICE BUILDING

Retailer Map



**Jake Levinson**  
415.786.4303  
jake@groundmatrix.com  
CalDRE #02021931

**Alex Fee**  
209.981.7753  
alex@groundmatrix.com  
CalDRE #02018515

**Clayton Demski**  
415.246.6999  
clayton@groundmatrix.com  
CalDRE #02117089