
Torrance Corporate Park

20000 MARINER AVENUE - 8,436 RSF



NEWMARK

Eric Adams
Senior Managing Director
t 310-491-2012
eric.adams@nmrk.com
CA RE Lic. #01349859

TORRANCE CORPORATE PARK

8,436 RSF

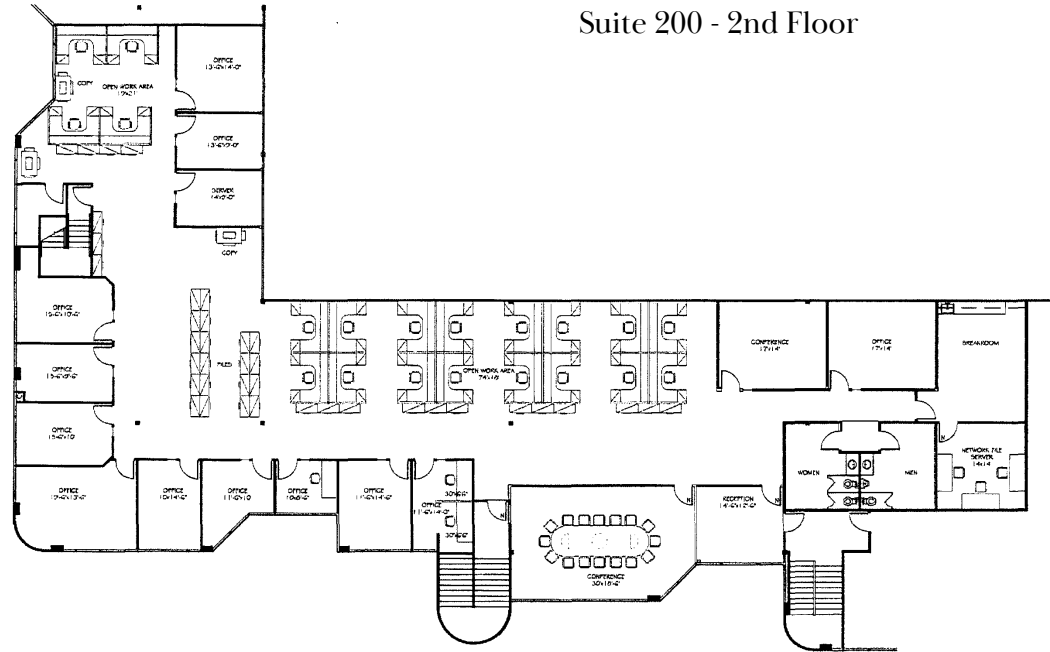
\$1.70/sf NNN

2nd Floor office area

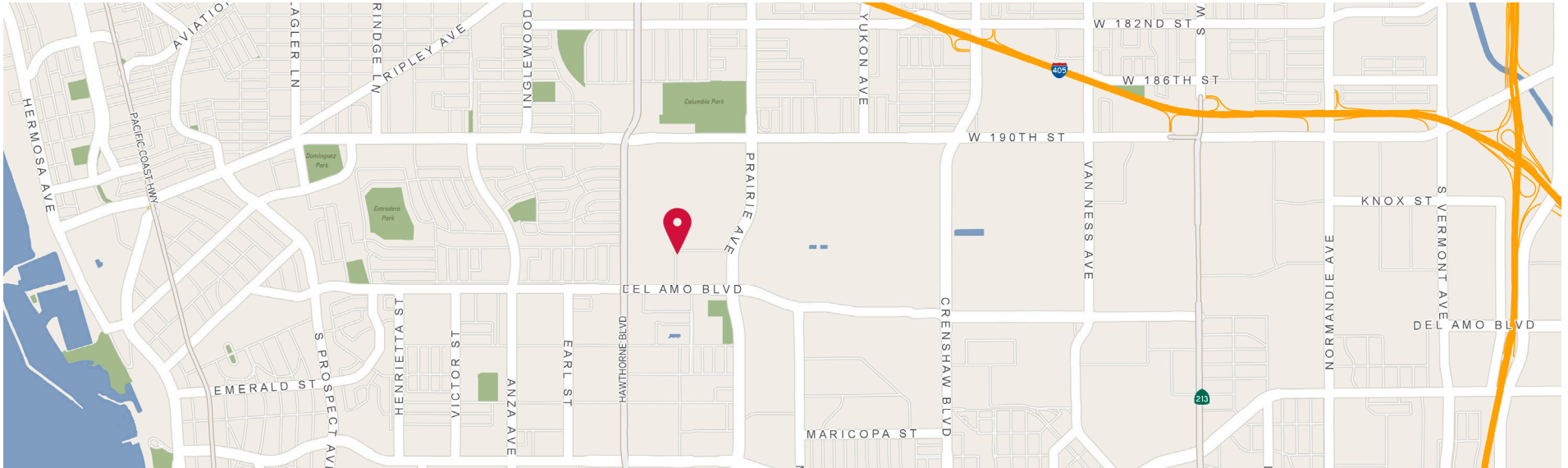
Spec, brand new condition

New lighting, carpet, cabinets, LVT

Suite 200 - 2nd Floor



TORRANCE CORPORATE PARK



Well-maintained
landscape & window
lines

3/1,000 Parking, free
of charge

Central Torrance
location near the 405
Freeway

Near Hawthorne
Boulevard amenities

CONTACT

Eric Adams
t 310-491-2012
eric.adams@nmrk.com
CA RE Lic. #01349859

Corporate License #01355491

The information contained herein has been obtained from sources deemed reliable but has not been verified and no guarantee, warranty or representation, either express or implied, is made with respect to such information. Terms of sale or lease and availability are subject to change or withdrawal without notice.

nmrk.com