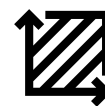


## Future residential land development opportunity with amazing coulee views



50.09 Acres



Quality amenities nearby



Part of the Royal View  
Area Structure Plan

### Get more information

**Doug Mereska**

Broker/Managing Director  
D 403 942 0064

[doug.mereska@avisonyoung.com](mailto:doug.mereska@avisonyoung.com)

**Vinko Smiljanec**

Associate  
D 587 425 5745

[vinko.smiljanec@avisonyoung.com](mailto:vinko.smiljanec@avisonyoung.com)



## Property Description

Future residential development land opportunity. This site is included in the Royal View Area Structure Plan (ASP) which is based on a vision that embraces quality, innovation, and sustainability to instill connectivity within the community as well as with its natural surroundings and landmarks.

## Location Description

The Royal View ASP area is located on the north side of the City of Lethbridge. It includes the lands bounded to the north by the future 62nd Avenue North (City boundary), to the south by the future 44th Avenue North, to the east by 28th Street North, and to the west by the Oldman River tributary coulees. Key infrastructure will be coordinated with these developments including 44th Avenue road alignment, major power distribution, and stormwater management. Nearby amenities include Legacy Gate, Uplands Common Shopping Centre, and Wal Mart Supercentre as well as recreational areas such as Pavan Park, the Alexander Wildness Park, Lethbridge Sports Park, and Legacy Regional Park.

## Offering Summary

Site Size:	50.09 Acres
Legal Address:	MER:4 RGE: 21 TWP: 9 SEC: 19 QTR: SW
Zoning:	Valley, Future Urban Development
Sale Price:	Will Consider Offers
Taxes:	\$152.71 (2022)
Possession:	Negotiable

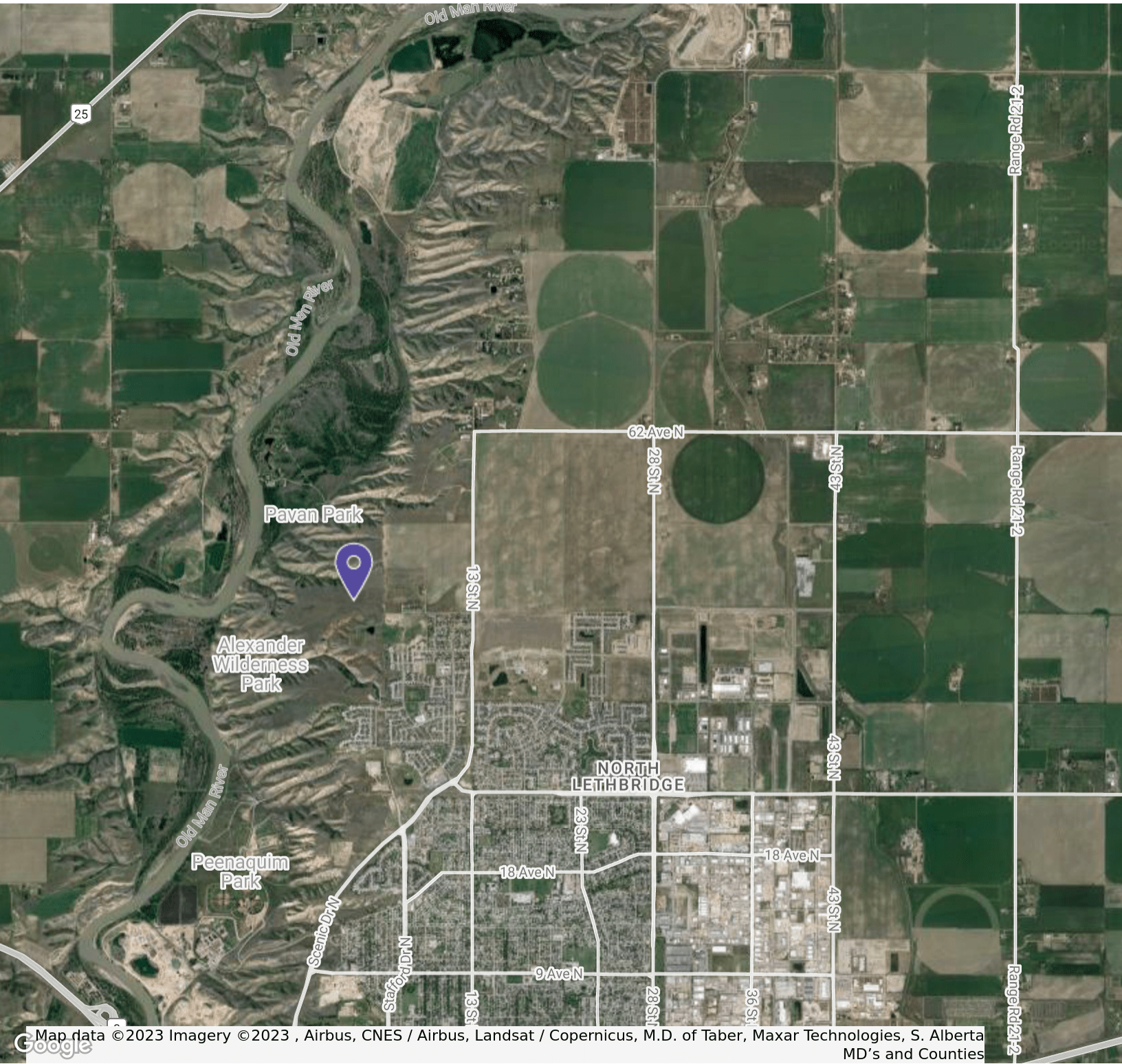
## Property Highlights

- Future residential development site with breathtaking coulee views
- Included in the Royal View Area Structure Plan
- Road alignment, power distribution, and stormwater management are to be coordinated
- Quality amenities and recreation areas nearby



**Doug Mereska**  
Broker/Managing Director  
D 403 942 0064  
doug.mereska@avisonyoung.com

**Vinko Smiljanec**  
Associate  
D 587 425 5745  
vinko.smiljanec@avisonyoung.com



**AVISON  
YOUNG**

**Doug Mereska**  
Broker/Managing Director  
D 403 942 0064  
doug.mereska@avisonyoung.com

**Vinko Smiljanec**  
Associate  
D 587 425 5745  
vinko.smiljanec@avisonyoung.com

Avison Young | 704 4th Avenue South, Suite 295 | Lethbridge, AB T1J 0N8 | 403 330 3338

© 2023. Avison Young. Information contained herein was obtained from sources deemed reliable and, while thought to be correct, have not been verified. Avison Young does not guarantee the accuracy or completeness of the information presented, nor assumes any responsibility or liability for any errors or omissions therein.