



EQUINOX SQUARE

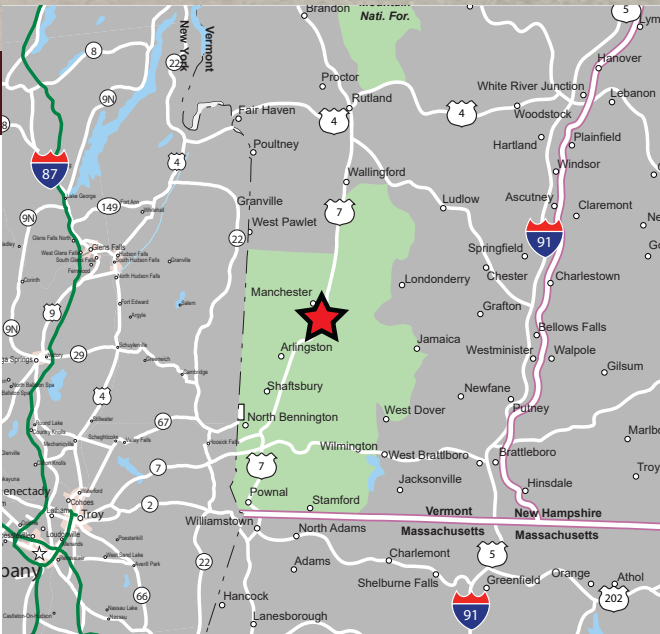
365-369 Depot Street (Route 30), Manchester, Vermont



AVAILABLE FOR LEASE

PROPERTY HIGHLIGHTS

- » 5,047 SF End-Cap Available For Lease
- » Located on the Highly Traveled Route 30
- » Excellent Visibility & Access
- » Destination Retail Market
- » Strong Co-Tenancy with Starbucks (Drive-Thru) Subway, Carter's and Jockey
- » Monument Signage Available

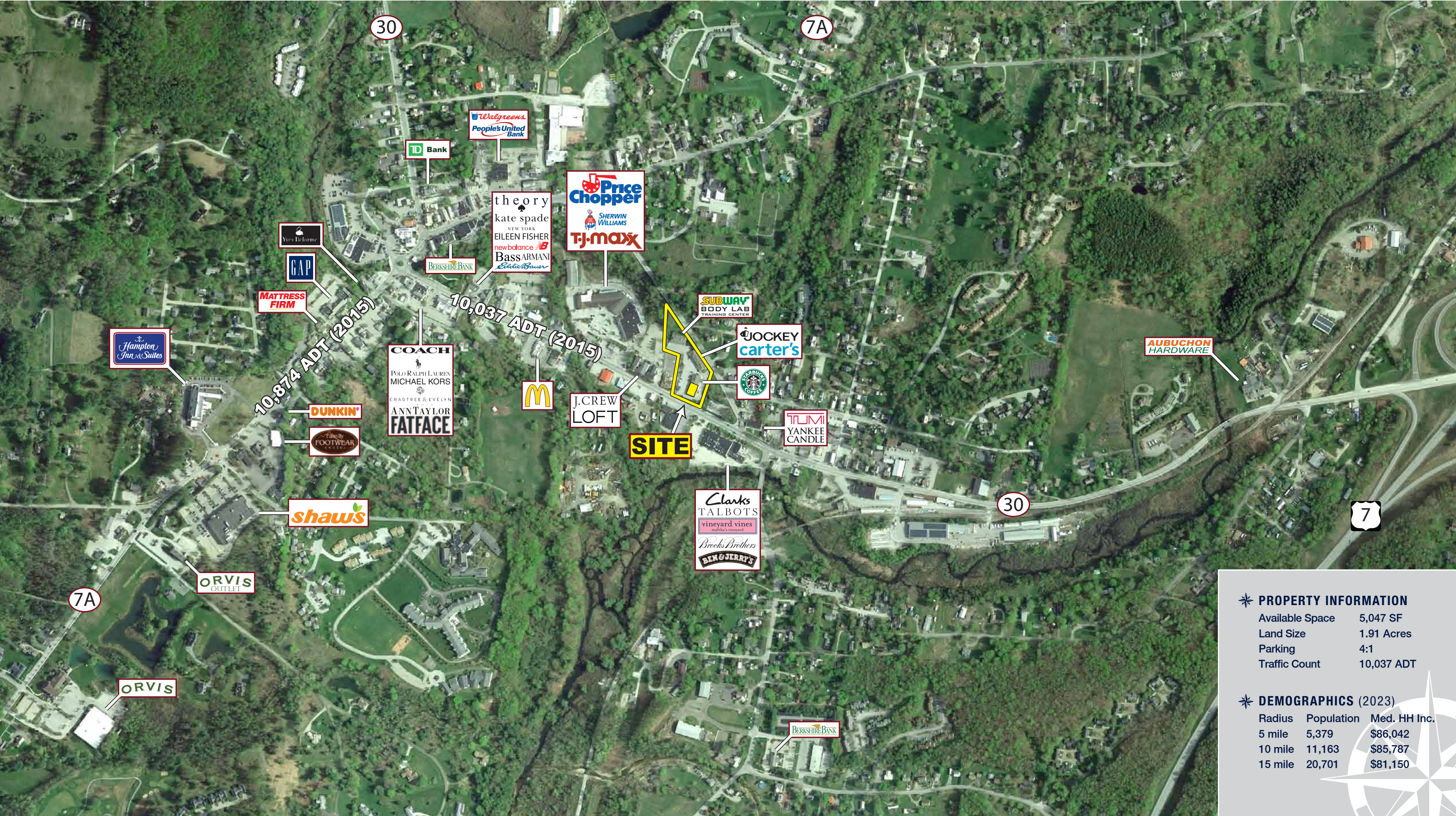


EQUINOX SQUARE

365-369 Depot Street (Route 30), Manchester, Vermont



EASTERN
RETAIL PROPERTIES



✦ **PROPERTY INFORMATION**

Available Space	5,047 SF
Land Size	1.91 Acres
Parking	4:1
Traffic Count	10,037 ADT

✦ **DEMOGRAPHICS (2023)**

Radius	Population	Med. HH Inc.
5 mile	5,379	\$86,042
10 mile	11,163	\$85,787
15 mile	20,701	\$81,150



Equinox Square - 365-369 Depot Street (Route 30), Manchester, Vermont



EASTERN
RETAIL PROPERTIES

FOR MORE INFORMATION CONTACT:

Mike Hotarek

781.849.9017

mhotarek@easternretail.com

Sam Peterson

781.849.9016

speterson@easternretail.com

P 781.849.9010 + F 781.849.9050 + www.easternretail.com + 25 Braintree Hill Office Park, Suite 404 + Braintree, MA 02184

The information above has been obtained from sources believed reliable. While we do not doubt its accuracy, we have not verified it and make no guarantee, warranty or representation about it. It is your responsibility to independently confirm its accuracy and completeness. Any projections, opinions, assumptions or estimates used are for example only and do not represent the current or future performance of the property. The value of this transaction to you depends on tax and other factors, which should be evaluated by your tax and financial advisors. You and your advisors should conduct a careful, independent investigation of the property to determine to your satisfaction, the suitability of the property for your needs.