



OFFICE SPACE FOR LEASE

1500 E Little Creek Rd
Norfolk, VA 23518



Contact Us:

REBECCA BARRICKLOW

SENIOR VICE PRESIDENT

D: 804.796.0516 | M: 804.399.4762
rbarricklow@rangecommercial.com

BRANTLEY HATHAWAY, JR

SENIOR ASSOCIATE

D: 804.736.0463 | M: 804.335.5266
bhathawayjr@rangecommercial.com

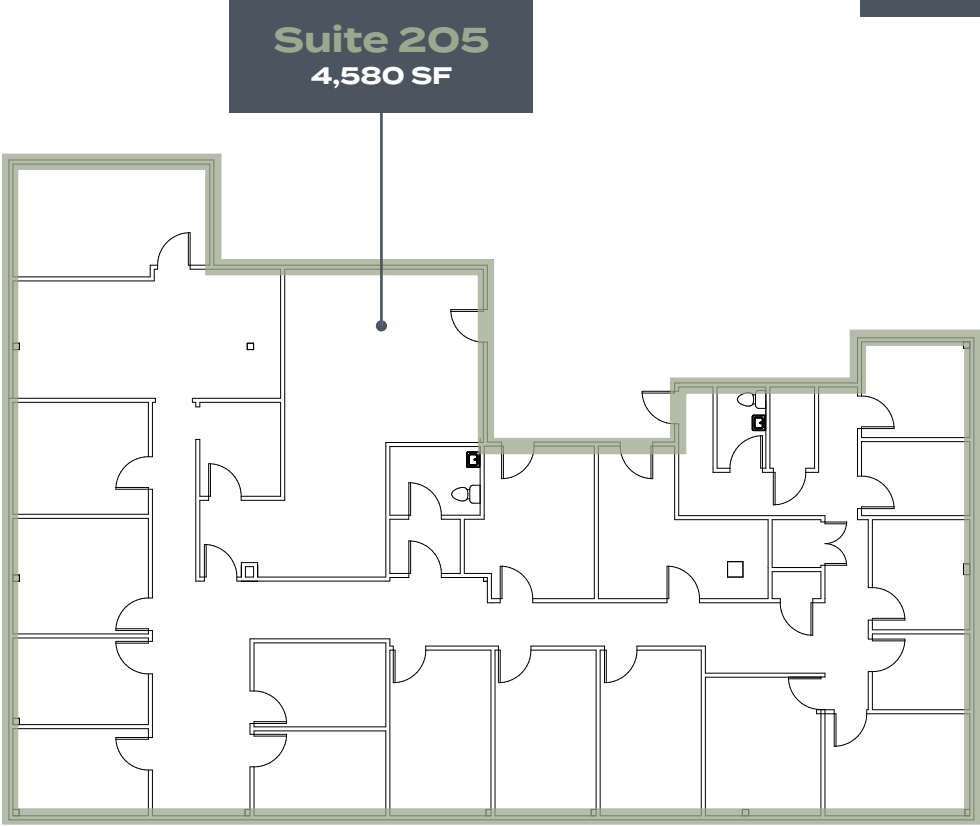
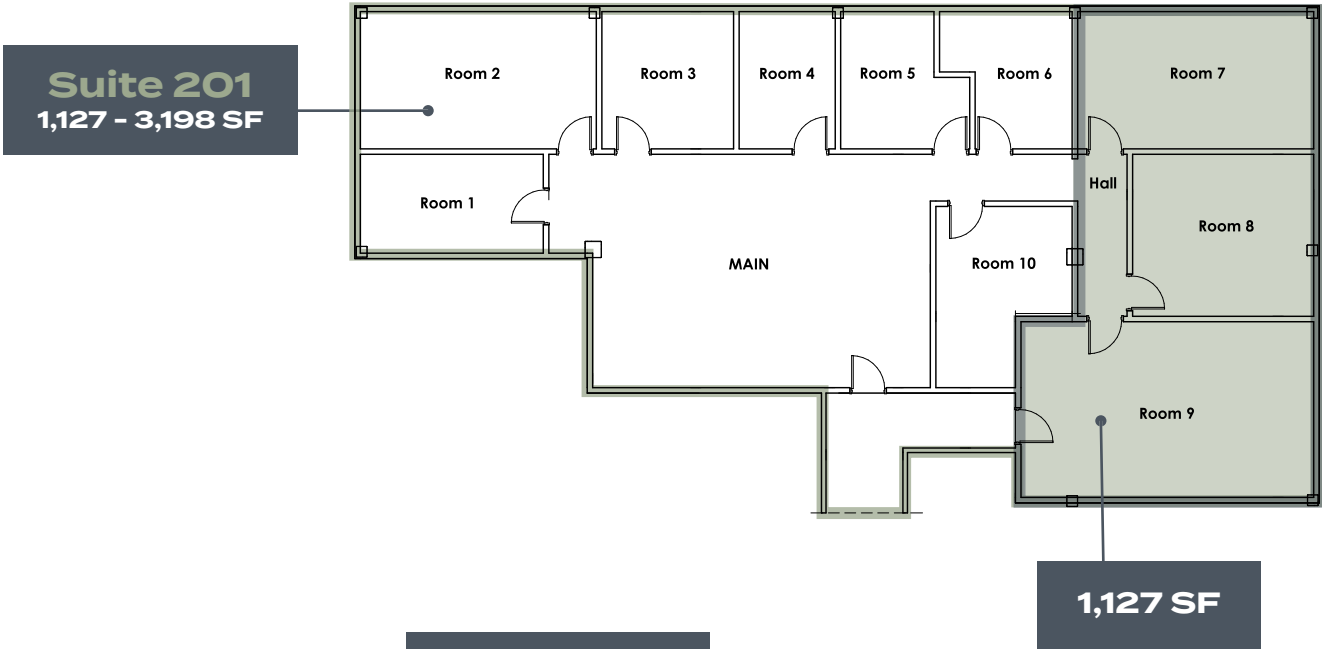
rangecommercial.com
804.796.0500
7200 Glen Forest Drive, Suite 100
Richmond, VA 23226

BUILDING HIGHLIGHTS

- Three story office building totaling 25,545 SF
- Join The Pendleton Law Team
- Available:
 - Suite 201 - 1,127-3,198 SF
 - Suite 205 - 4,580 SF
 - Suite 307 - 1,068 SF
- Flexible lease terms and rates
- Parking Ratio: 4/1,000 SF, covered and surface parking available
- Exterior and Lobby renovations including new signage will commence in early 2025
- Centrally located with easy access to I-64

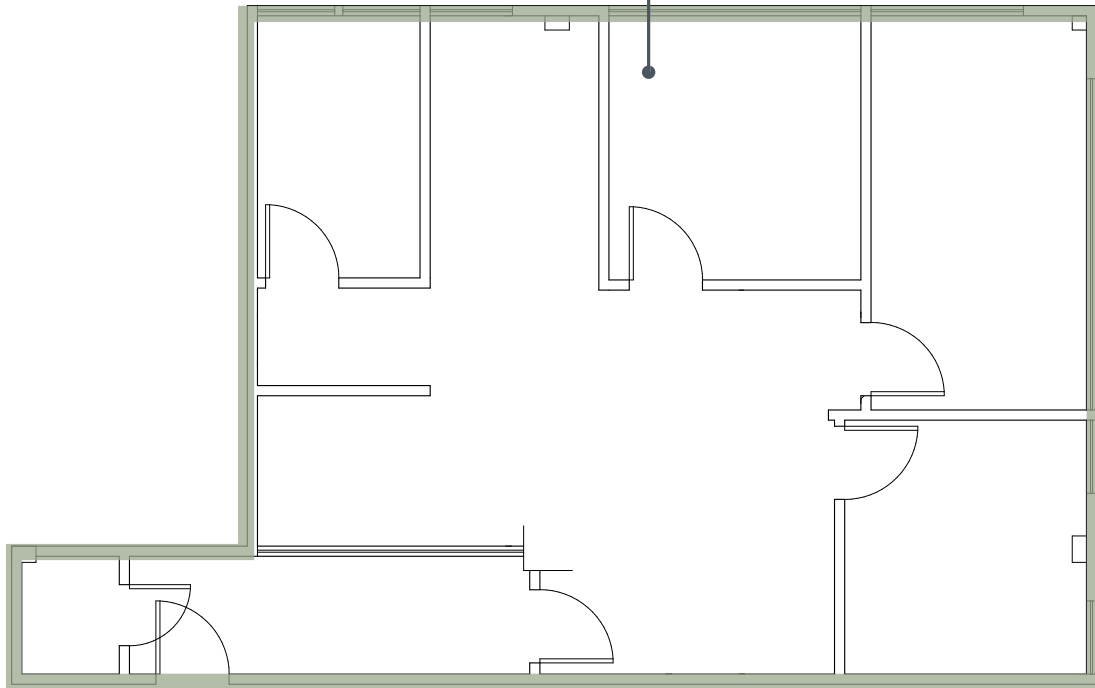
Copyright ©2025 Range Commercial Partners. Information herein has been obtained from sources deemed reliable, however its accuracy cannot be guaranteed. The user is required to conduct their own due diligence and verification.

FLOOR PLANS



FLOOR PLANS

Suite 307
1,068 SF



OFFICE BUILDING FOR LEASE | NORFOLK, VA

Area Map



Contact Us

REBECCA BARRICKLOW

SENIOR VICE PRESIDENT

D: 804.796.0516 | C: 804.399.4762

rbarricklow@rangecommercial.com

BRANTLEY HATHAWAY, JR

SENIOR ASSOCIATE

D: 804.736.0463 | C: 804.335.5266

bhathawayjr@rangecommercial.com

RANGECOMMERCIAL.COM

