

FOR LEASE

1565 N CENTRAL EXPY



THE DETAILS

ADDRESS

1565 N Central Expy
Richardson, TX 75080

AVAILABLE

Office/Flex Space
2nd Floor 7,323 SF

PARKING

55 Parking Spaces

LOCATION

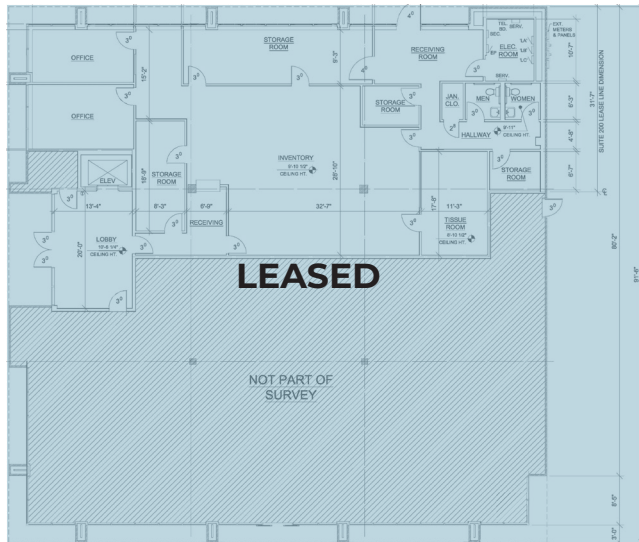
Easy Access to Central Expressway

SIGNAGE

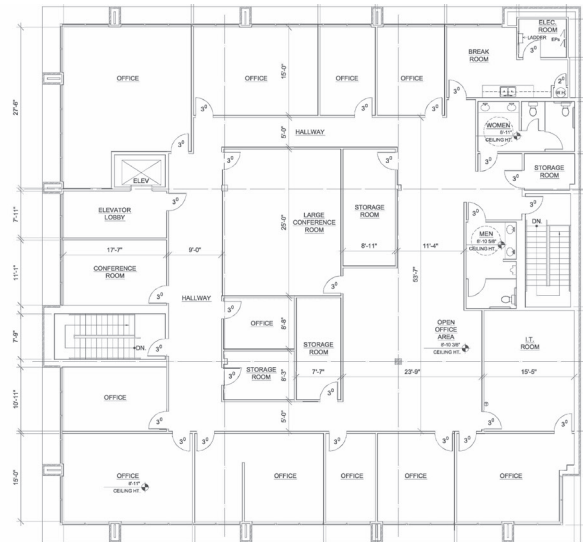
Large Building Signage Available



AVAILABLE SPACE UP TO 7,323 SF



GROUND FLOOR



SECOND FLOOR

