



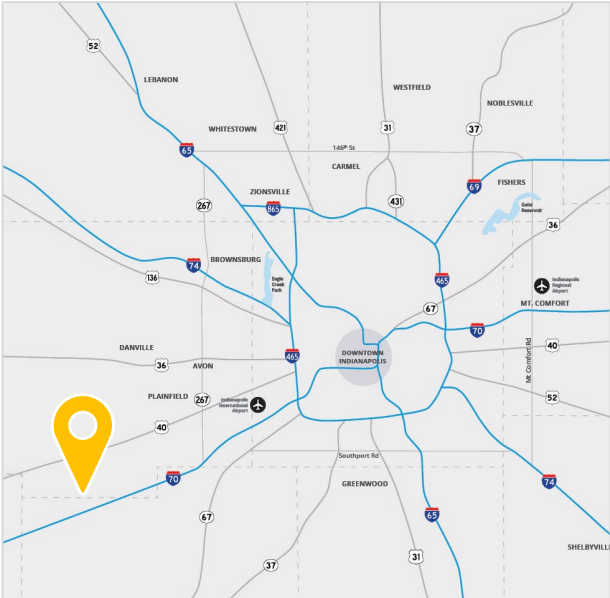
**4,928 SF BUILDING UNDER CONSTRUCTION!**  
Delivering Summer 2026

**FOR LEASE**  
**8451 S State Road 39**  
Clayton, IN 46118

**Available for Occupancy July 1, 2026!**

**Property Highlights**

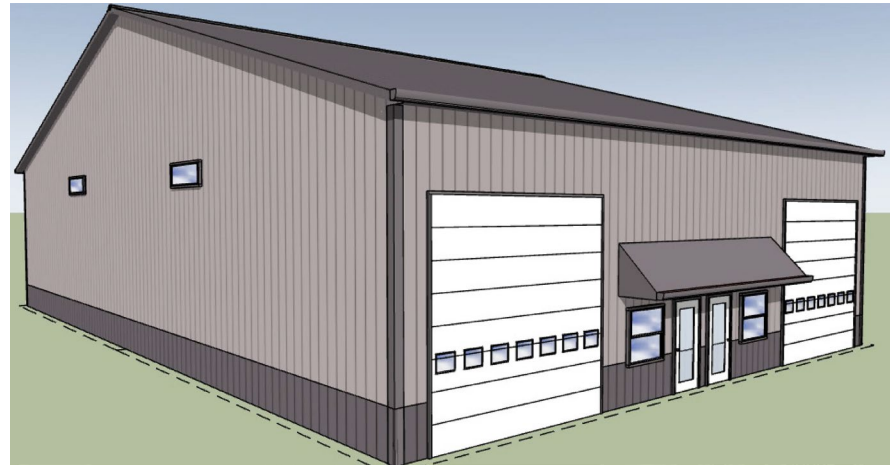
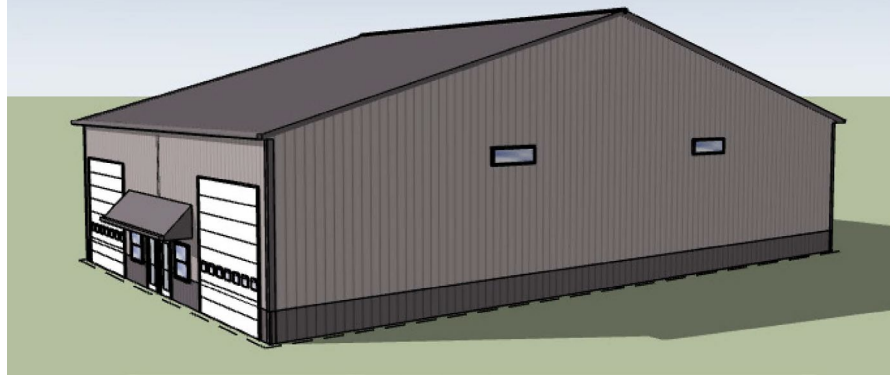
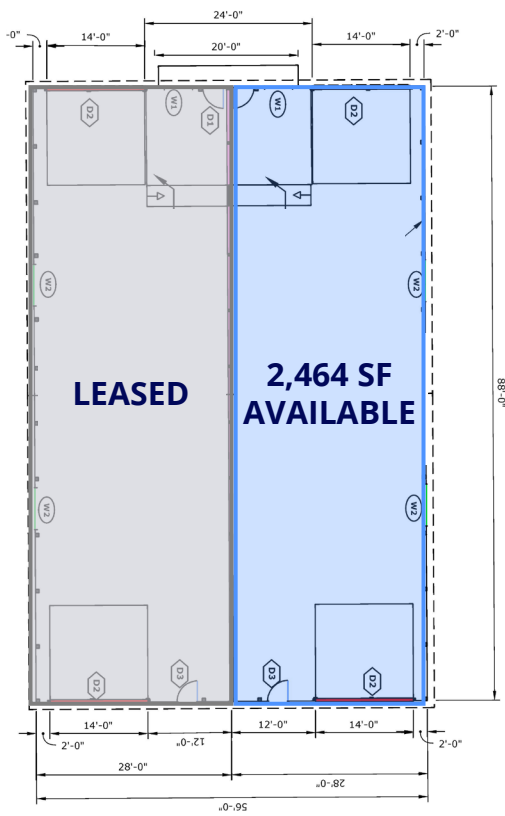
- 4,928 SF Building Currently Under Construction
- 2,464 SF Suite For Lease – Available Summer 2026
  - (1) 14' x 14' automatic overhead door
  - 16' – 20' clear height
  - Private office + restroom
  - Potential outdoor storage available
- Immediate access to I-70
- Located in rapidly developing industrial area
- Contact broker for pricing



**George Manley SIOR**  
+1 317 713 2166  
george.manley@colliers.com

**Jason Speckman SIOR**  
+1 317 713 2115  
jason.speckman@colliers.com

**Colliers Indianapolis**  
[colliers.com](http://colliers.com)



**George Manley SIOR**  
 +1 317 713 2166  
 george.manley@colliers.com

**Jason Speckman SIOR**  
 +1 317 713 2115  
 jason.speckman@colliers.com

