



29 Riverside Street

Nashua, NH
FOR SALE



Chris Pascucci
MANAGING DIRECTOR
603.262.3555 chris.pascucci@sperrycga.com
NH #047341



2,750 SF | Unit C | Medical/Professional Office



Description

Medical/Professional Office for Sale
29 Riverside St, Nashua, NH

\$349,900

Highlights

Property Features:

- Waiting room with reception area
- In-unit restroom, with two additional ADA-compliant restrooms in the common area
- Ample parking with 48 on-site spaces
- Cameras securing common area

Prime Location & Market Reach:

- Medical office hub – surrounded by multi-specialty practices
- Close to major hospitals – Southern NH Medical Center & St. Joseph Hospital
- Population coverage of 206,000+ in the regional area
- Adjacent to high-traffic community landmarks – Nashua High School South, YMCA, Mine Falls Park, Conway Skating Arena, and more

Located just 1.2 miles from Everett Turnpike Exit 5W, this updated office space offers a turnkey opportunity in a thriving medical hub. Positioned on the 2nd floor with an ADA-compliant lift, this space is well-equipped for professionals seeking a modern, functional, and accessible office.

This well-maintained and strategically positioned office is an excellent opportunity for healthcare professionals or investors looking to establish a presence in Nashua's growing medical corridor.

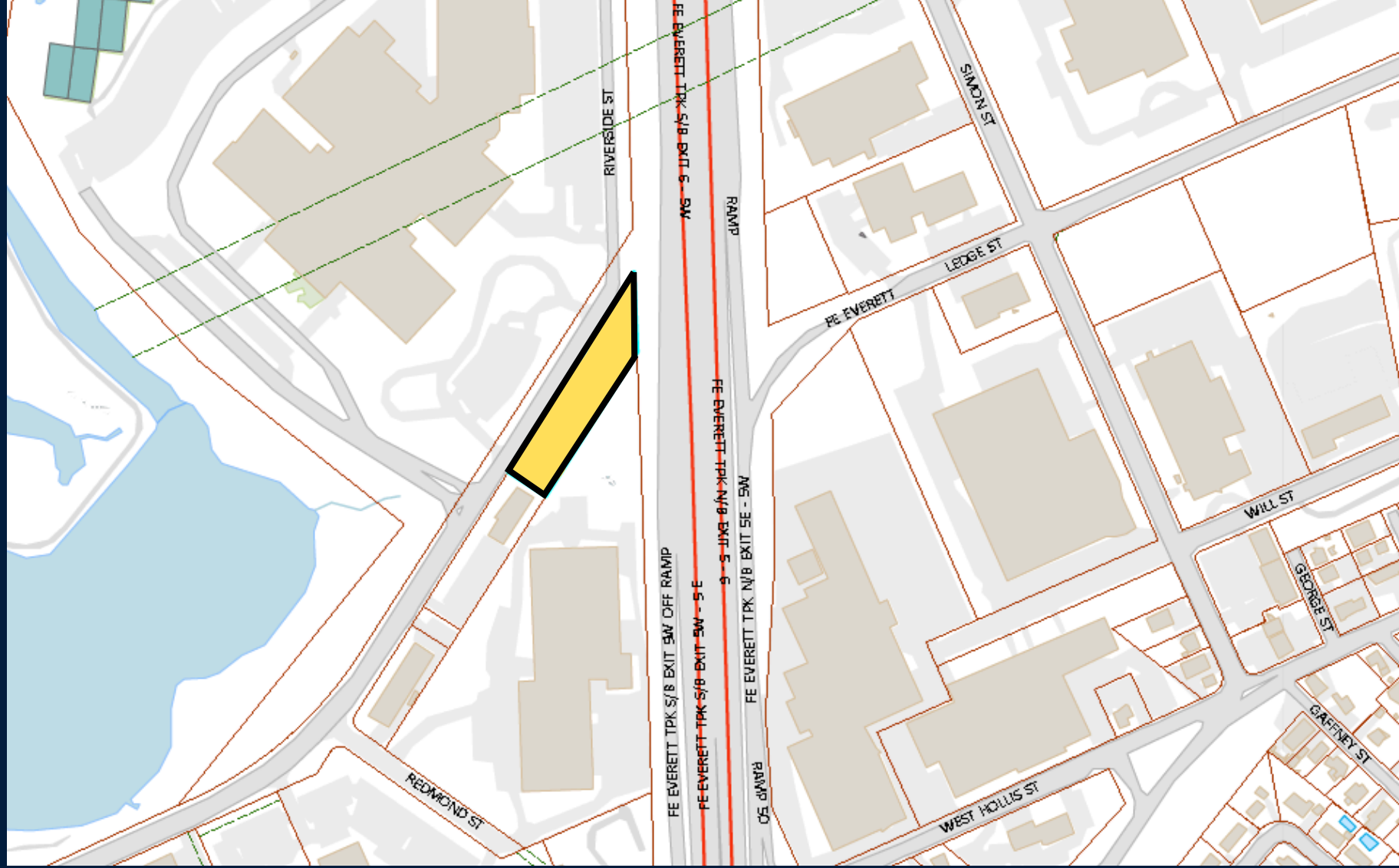
Location

SPACE FOR SALE | 29 RIVERSIDE ST



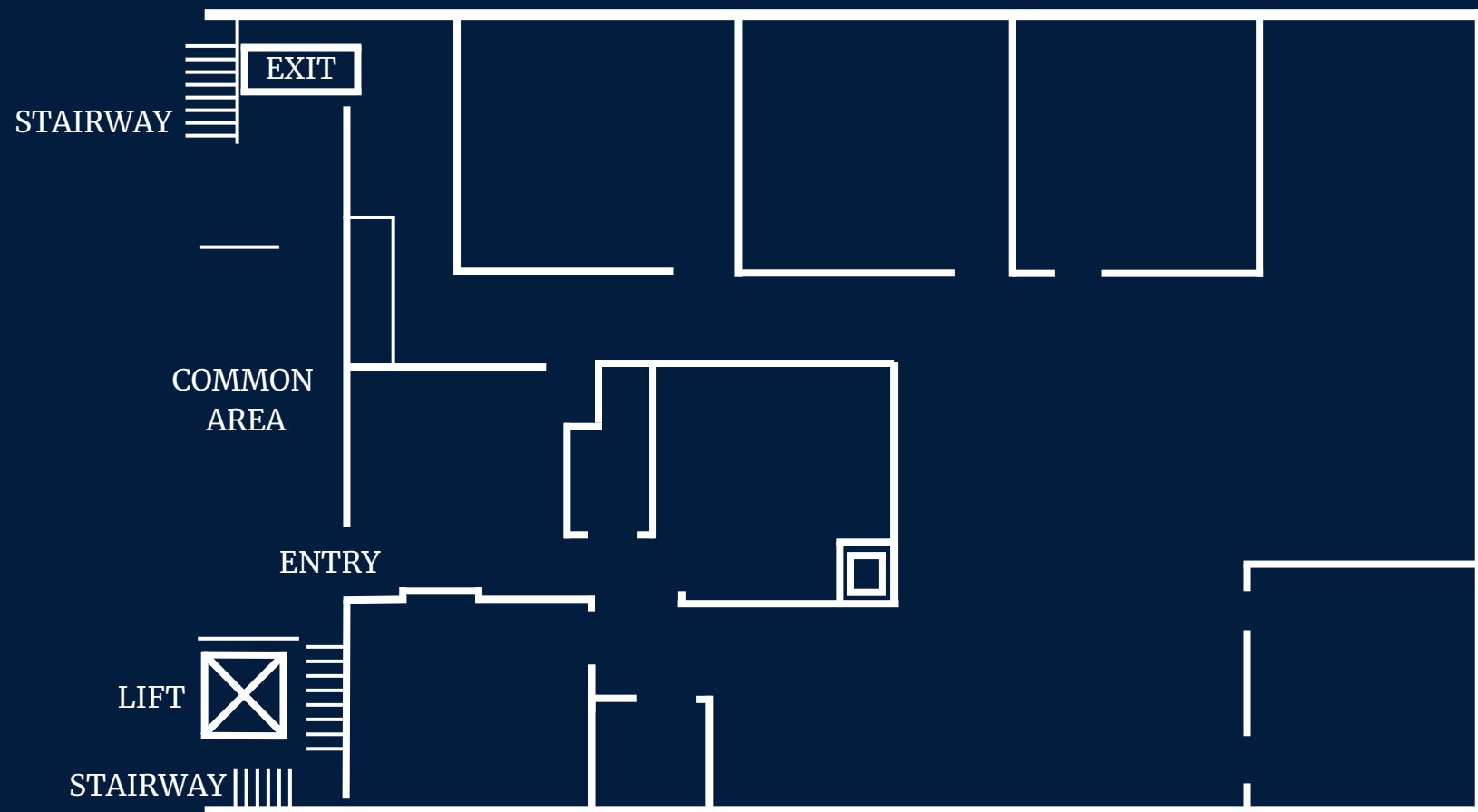
Parcel Map

SPACE FOR SALE | 29 RIVERSIDE ST





Unit Layout



Interior Photos

SPACE FOR SALE | 29 RIVERSIDE ST



Interior Photos



SPACE FOR SALE | 29 RIVERSIDE ST

Interior Photos





Chris Pascucci

Managing Director

NH #047341

chris.pascucci@sperrycga.com

603.494.8960

CHRIS PASCUCCI PROFESSIONAL BACKGROUND

Chris began his career in 1985 in the New York City area, focusing on property maintenance and management for office complexes. After moving to New Hampshire in 1995, he obtained his real estate license and joined Global Commercial Real Estate in Bedford, NH, expanding his property management services across Southern New Hampshire.

As a key liaison for property owners, tenants, and vendors, Chris has built a strong network in the state and specializes in sales, leasing, tenant relations, lease negotiations, and preventive asset maintenance.

In 2017, he became Principal Broker and Managing Director at The Masiello Group, helping to expand their commercial real estate division and grow the team to 20 associates. His leadership established the firm's strong presence in New Hampshire, Maine, Massachusetts, and Vermont.

In October 2024, Chris launched a new chapter as Owner and Principal Broker of Commercial Realty Associates, aiming to position the firm as a premier commercial real estate leader in Northern New England. With a focus on excellence and innovation, Chris is dedicated to providing exceptional service to clients.



SPERRY - Commercial Realty Associates

169 S River Road, Bedford, NH Suite #1
theCREassociates.com