

FOR LEASE

# ± 19,550 SF Gun Range & Retail Facility

1212 NORTH BOULDER HIGHWAY  
HENDERSON, NV 89011



**NEWMARK**

**Mike Zobrist**

*Managing Director*  
t 702-405-1755  
mike.zobrist@nmrk.com  
S.70489

**Lauren Tabeeek, CCIM**

*Managing Director*  
t 702-405-1707  
lauren.tabeeek@nmrk.com  
S.74477.LLC

**Scott Price**

*Brokerage Services Specialist*  
t 702-405-1728  
scott.price@nmrk.com  
S.174018



# ± 19,550 SF Gun Range & Retail Facility

1212 NORTH BOULDER HIGHWAY  
HENDERSON, NV 89011

**Square Footage:** ± 19,550 SF

**Lease Rate:** \$1.65/SF/mo. NNN

**NNN:** To be determined

**Land Area:** 1.33 acres; 66 parking spaces

**Zoning:** MC Corridor/Community

Mixed-Use (City of Henderson)

**Traffic Counts:** 23,000 ADT

Great opportunity to lease a former gun range and retail facility on Boulder Highway. The property houses a 9-lane total containment trap (TCT) style shooting range with steel plate backing, a retail area, gunsmith workshop, offices, storage, multiple restrooms, an elevator, high dock loading, training area and classroom space.

All exterior walls of the building are block walls with reinforced concrete cores for added security. All exterior doors and windows have motorized metal roll-up coverings and/or metal security gates. Ample power is supplied to the building with 1,000 amps and a backup generator.

The building sits on 1.33 acres and is zoned MC within the Henderson city limits. There are two points of ingress/egress- one on Boulder Highway and one on King Street.

- Opportunity for multiple income streams
- High-level building security
- Capability to add second rifle range



## NEWMARK

Procuring broker shall be entitled to a commission calculated in accordance with the rates approved by our principal only if such procuring broker executed a brokerage agreement acceptable to us and our principle and the conditions as set forth in the brokerage agreement are fully and unconditionally satisfied. Although all information furnished regarding property for sale, rental, or financing is from sources deemed reliable, such information has not been verified and no express representation is made nor is any to be implied as to the accuracy thereof and it is submitted subject to errors, omissions, change of price, rental or other conditions, prior sale, lease or financing, or withdrawal without notice and to any special conditions imposed by our principal.



# ± 19,550 SF Gun Range & Retail Facility

4740 SOUTH DECATUR BOULEVARD  
LAS VEGAS, NV 89103



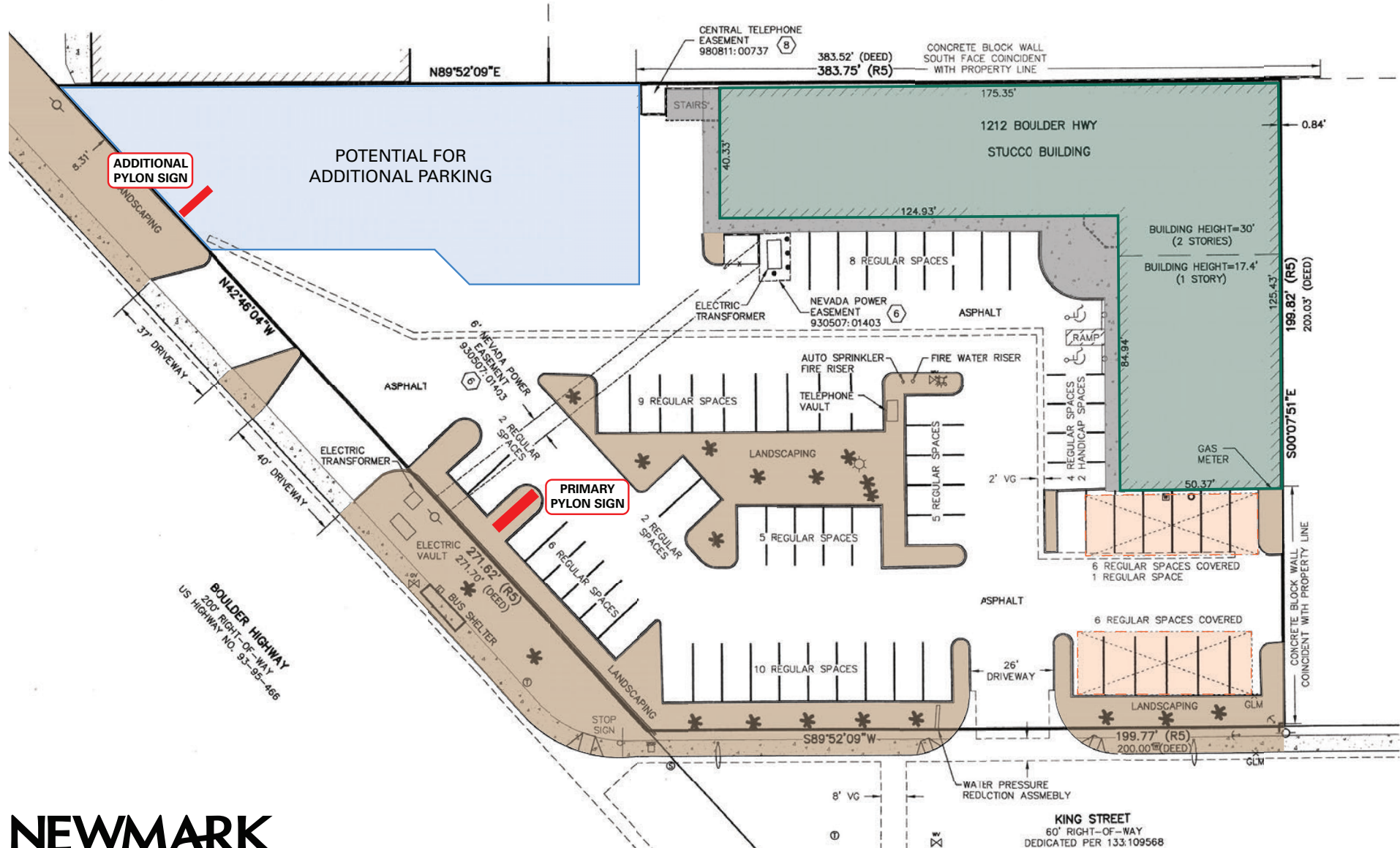
TOTAL CONTAINMENT TRAP (TCT) BULLET COLLECTION SYSTEM



# ± 19,550 SF Gun Range & Retail Facility

1212 NORTH BOULDER HIGHWAY  
HENDERSON, NV 89011

## Site Plan

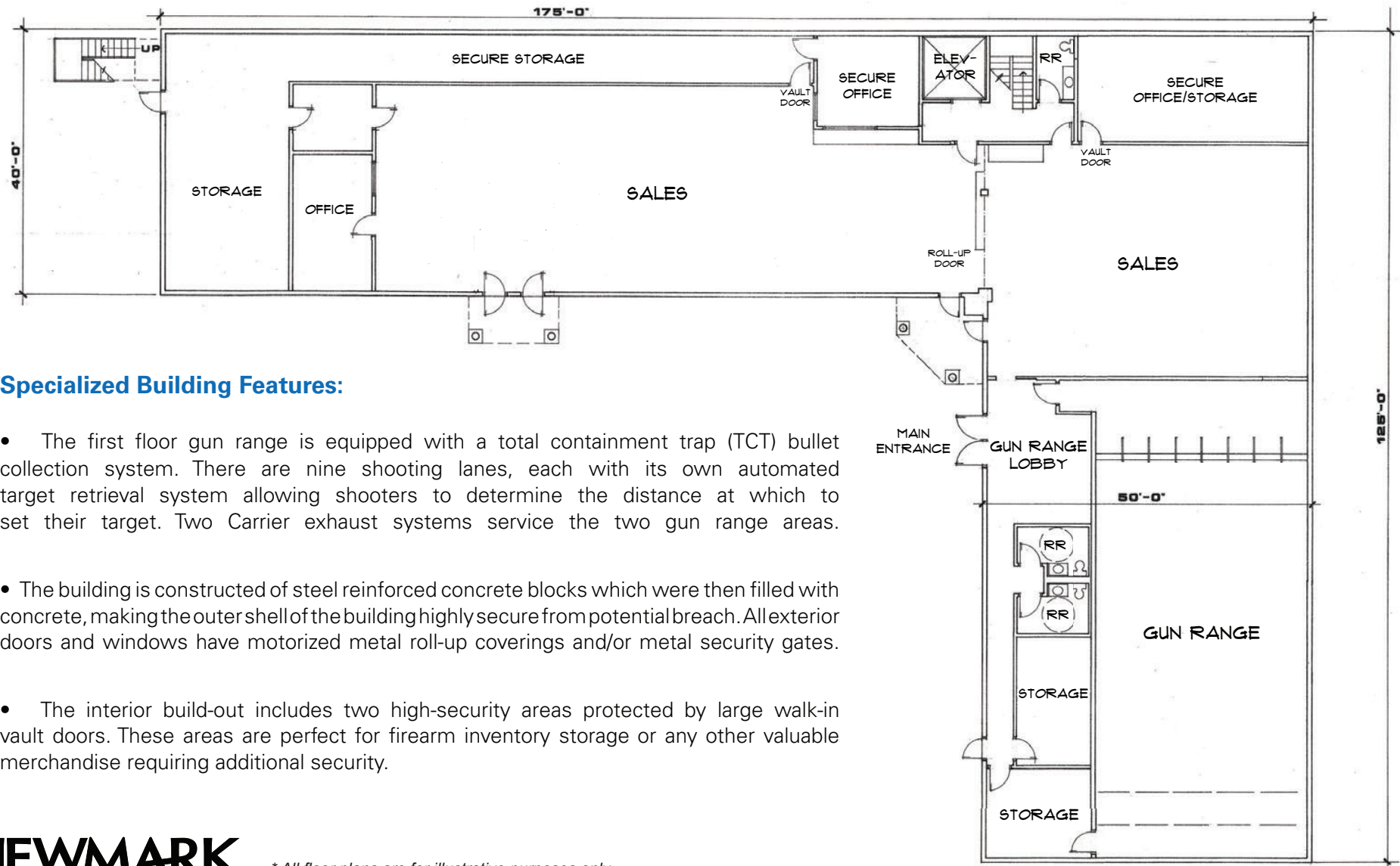


# ± 19,550 SF Gun Range & Retail Facility

1212 NORTH BOULDER HIGHWAY  
HENDERSON, NV 89011

## Floor Plan

### FIRST FLOOR



### Specialized Building Features:

- The first floor gun range is equipped with a total containment trap (TCT) bullet collection system. There are nine shooting lanes, each with its own automated target retrieval system allowing shooters to determine the distance at which to set their target. Two Carrier exhaust systems service the two gun range areas.
- The building is constructed of steel reinforced concrete blocks which were then filled with concrete, making the outer shell of the building highly secure from potential breach. All exterior doors and windows have motorized metal roll-up coverings and/or metal security gates.
- The interior build-out includes two high-security areas protected by large walk-in vault doors. These areas are perfect for firearm inventory storage or any other valuable merchandise requiring additional security.

**NEWMARK**

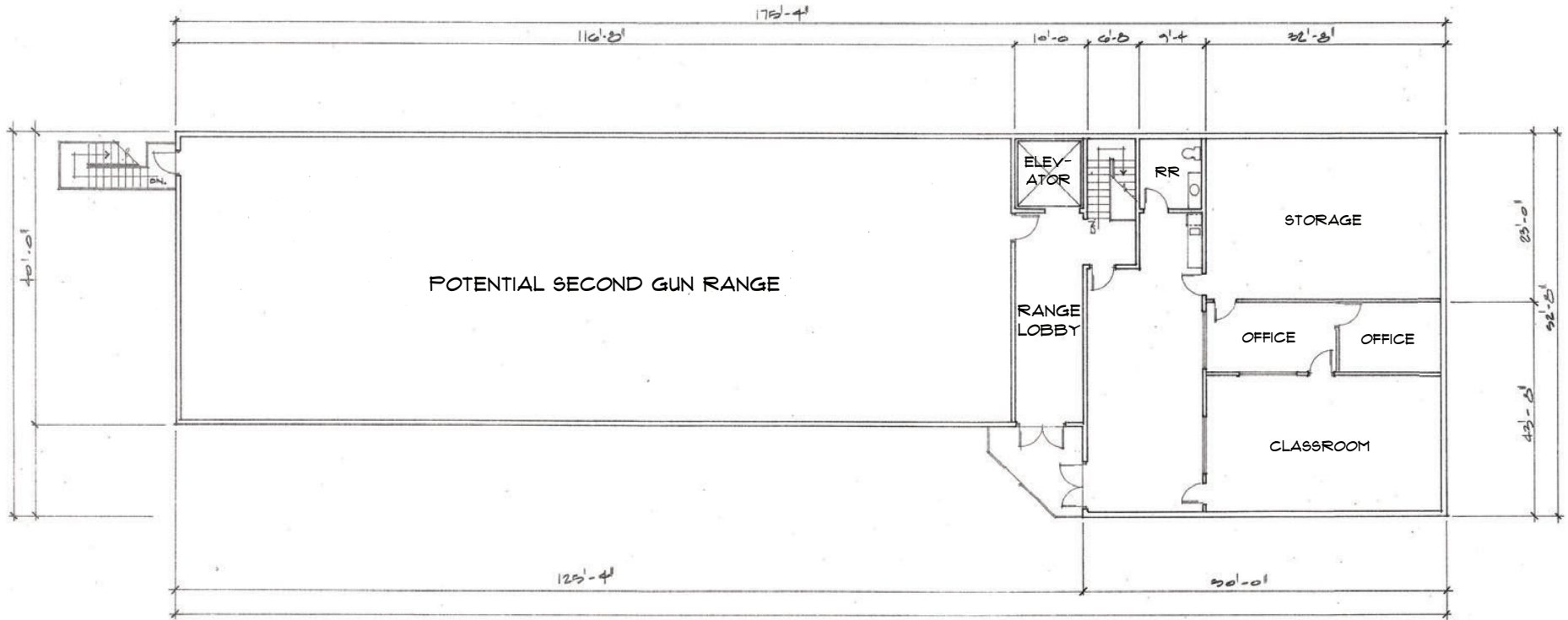
*\* All floor plans are for illustrative purposes only.*

# ± 19,550 SF Gun Range & Retail Facility

1212 NORTH BOULDER HIGHWAY  
HENDERSON, NV 89011

## Floor Plan

### SECOND FLOOR



**NEWMARK**

*\* All floor plans are for illustrative purposes only.*



# ± 19,550 SF Gun Range & Retail Facility

4740 SOUTH DECATUR BOULEVARD  
LAS VEGAS, NV 89103

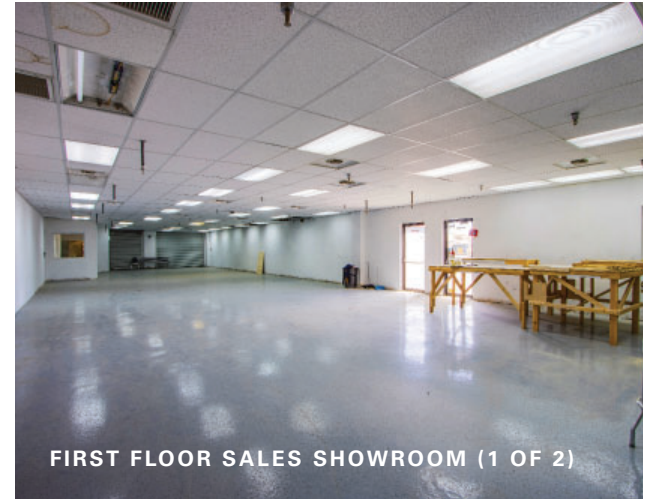
## Interior Photos



NINE LANE GUN RANGE



GUN RANGE LOBBY



FIRST FLOOR SALES SHOWROOM (1 OF 2)



POTENTIAL SECOND GUN RANGE  
(2ND FLOOR)



2ND FLOOR CLASSROOM



BULLET COLLECTION SYSTEM





95

UNION VILLAGE

HENDERSON HOSPITAL

GALLERIA DR.

TRU

COSTCO

DICK'S

KOHL'S

GALLERIA

WALMART

SUNSET RD.

SUNSET STATION

WALMART

LOWE'S

PROLOGIS  
Future  
Industrial

Google

BOULDER HWY.



WARM SPRINGS RD.

INVECO

WARM SPRINGS RD.

VALLEY  
AUTOMALL

VALLEY  
AUTOMALL

STEPHANIE ST.

GIBSON RD.

Ocean Spray

WinCo  
FOODS

Kwikwik

215

95

LAKE MEAD PKWY.

BIG  
LOTS

ROSS

SPROUTS

Walmart

CADENCE  
2,200 TOTAL ACRES  
12,250 RESIDENTIAL UNITS

LAKE MEAD PKWY.