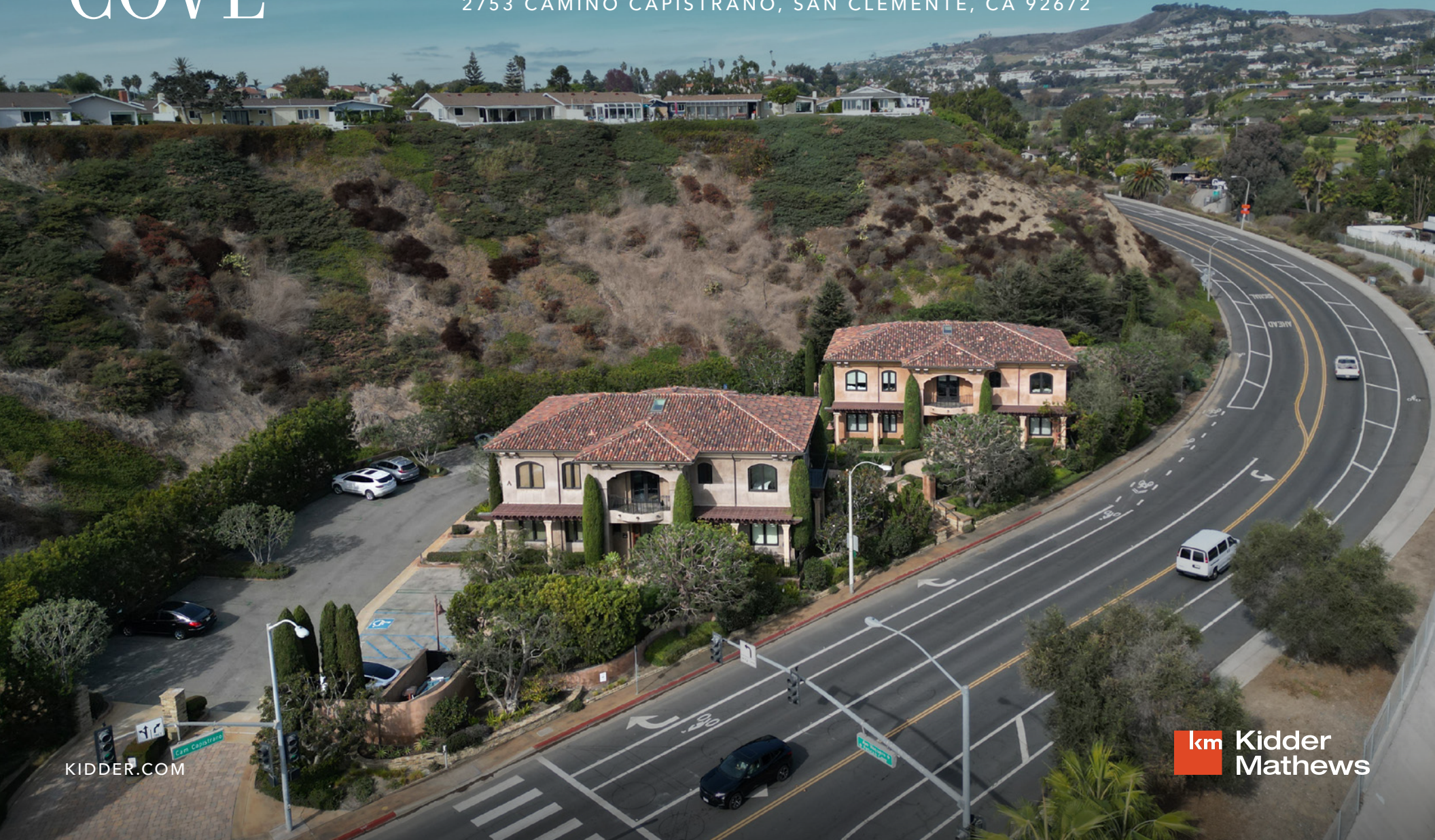


FOR LEASE

PELICAN COVE

*Beautiful ocean-front office buildings,
nestled along the Orange County Coast*

2753 CAMINO CAPISTRANO, SAN CLEMENTE, CA 92672





The most beautiful office campus in South Orange County, period. Seconds from both the beach and Coast Highway, will you drive or take the boat to work?



ARCHITECTURALLY
UNIQUE OFFICE
BUILDINGS



PRIVATE
OUTDOOR
SPACE



BEAUTIFULLY
LANDSCAPED



ONE BLOCK
WALK TO
THE BEACH

Architecturally unique boutique office buildings

Beautifully landscaped grounds with secluded garden patios

One block walk to the beach

Private outdoor space

Large conference room and private offices

Beautiful reception area

Restrooms in the lobby

6 MIN

DRIVE TO I-5 FREEWAY

4 MIN

WALK TO POCHE BEACH



FIRST FLOOR PLAN | SUITE A 101

1,280 SF

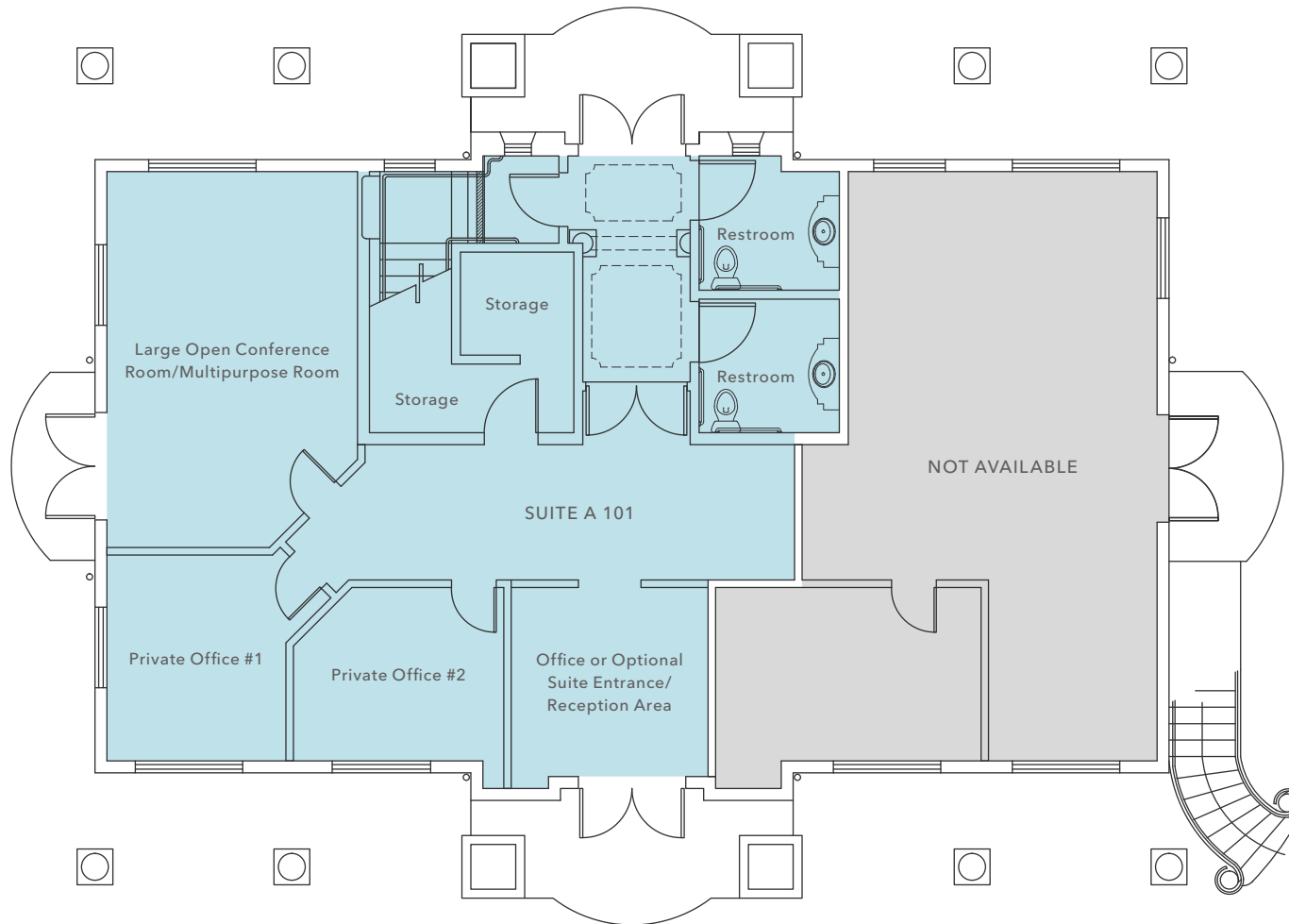
AVAILABLE

3:1,000

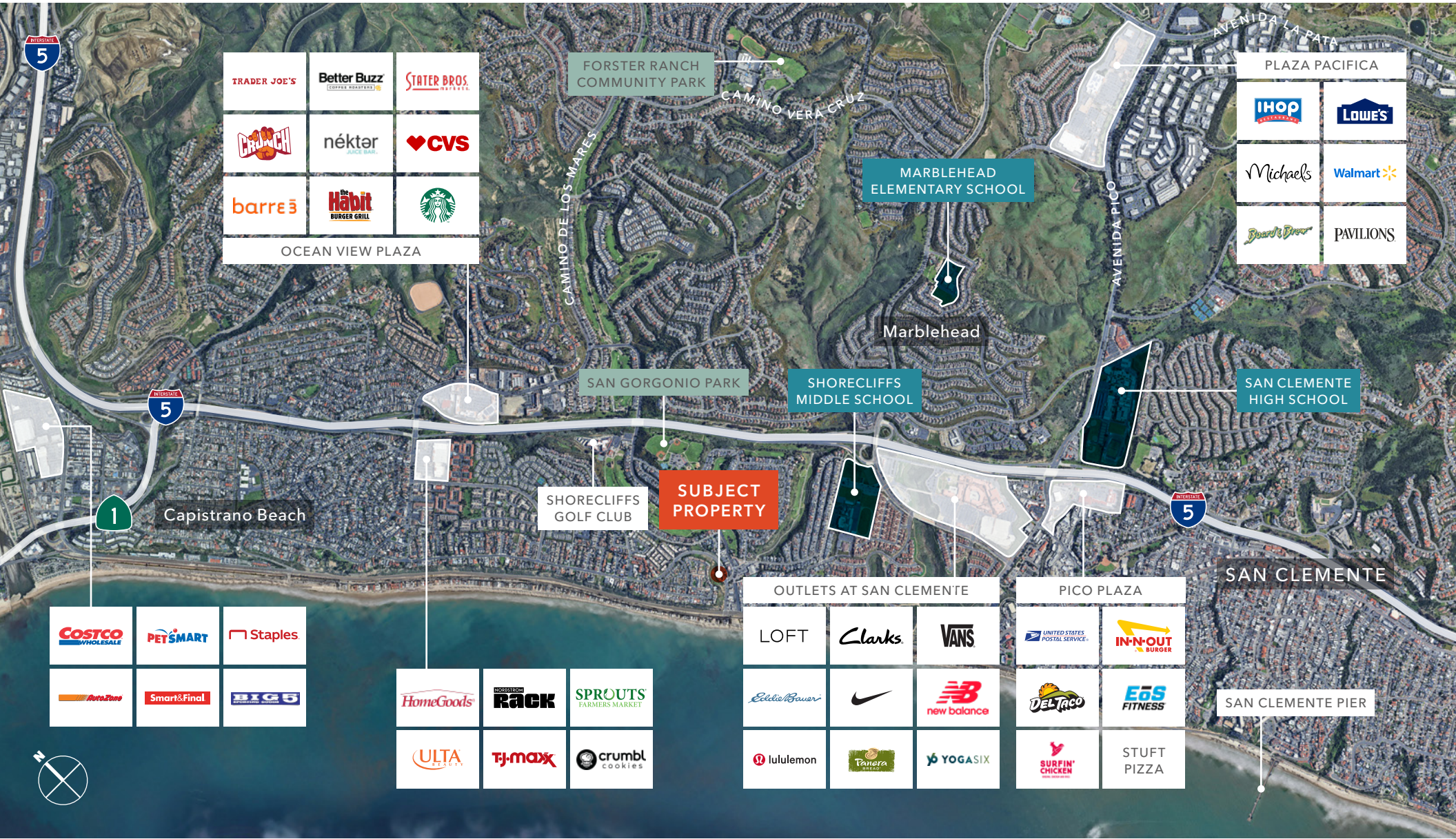
PARKING RATIO

2006

YEAR BUILT



PELICAN COVE



PELICAN COVE

*For more information on
this property, please contact*

JOSH CUNNINGHAM
949.415.7333
josh.cunningham@kidder.com
LIC# 01802660

KIDDER.COM

This information supplied herein is from sources we deem reliable. It is provided without any representation, warranty, or guarantee, expressed or implied as to its accuracy. Prospective Buyer or Tenant should conduct an independent investigation and verification of all matters deemed to be material, including, but not limited to, statements of income and expenses. Consult your attorney, accountant, or other professional advisor. All Kidder Mathews designs are the sole property of Kidder Mathews. Branded materials and layouts are not authorized for use by any other firm or person.

