



1289 Edison Street
Hartville, Ohio 44632

LEASE RATE \$18-\$20.57/SF + electric

TRAFFIC COUNT 20,107 AADT

Sq Ft	SF Rate	Monthly Rate
1,400	\$20.57	\$2,400.00
8,400	\$18.00	\$12,600.00

Dan Spring, SIOR

P 330 966 8800
dan@naispring.com

Kelly Sober, CCIM

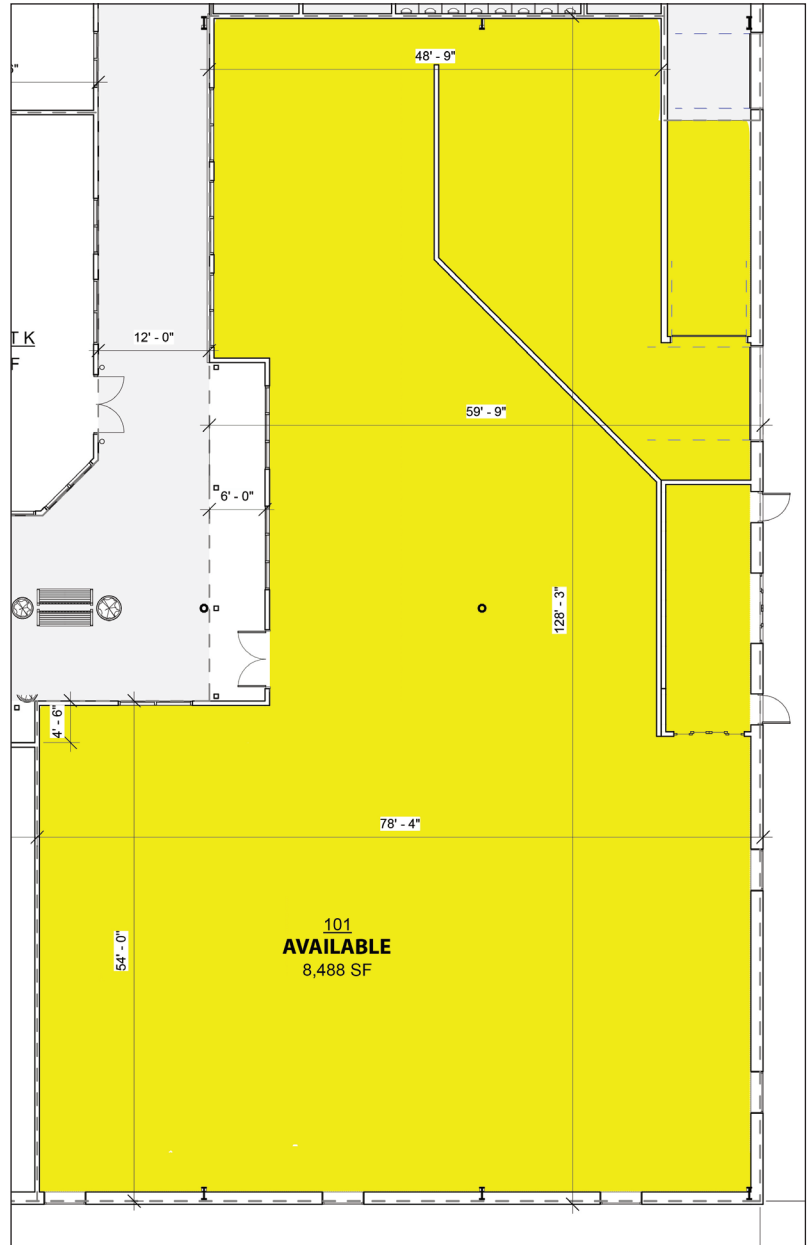
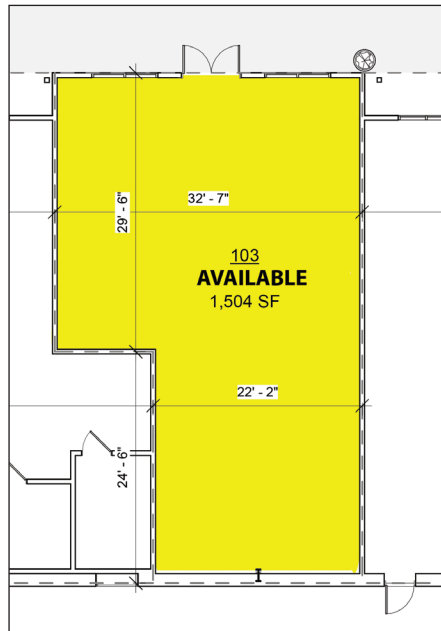
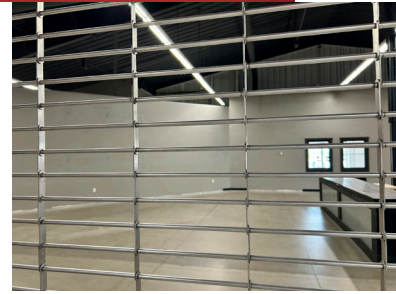
P 330 497 9837
kelly@naispring.com

Property Highlights

- Located in the iconic Hartville Marketplace & Flea Market, part of the well-known Hartville campus.
- High foot traffic from weekly shoppers, tourists, and event-goers.
- Neighboring tenants include Hartville Hardware, Hartville Kitchen, and dozens of vendors and artisans.
- Ample on-site parking with easy access and strong visibility from Edison Street / Route 619.
- Flexible layout and build-out options to meet your business needs.
- Leverage a well-established destination with a regional customer base and year-round activity.
- A rare opportunity to join one of Ohio's most popular shopping attractions!

NO WARRANTY OR REPRESENTATION, EXPRESS OR IMPLIED, IS MADE AS TO THE ACCURACY OF THE INFORMATION CONTAINED HEREIN, AND THE SAME IS SUBMITTED SUBJECT TO ERRORS, OMISSIONS, CHANGE OF PRICE, RENTAL OR OTHER CONDITIONS, PRIOR SALE, LEASE OR FINANCING, OR WITHDRAWAL WITHOUT NOTICE, AND OF ANY SPECIAL LISTING CONDITIONS IMPOSED BY OUR PRINCIPALS NO WARRANTIES OR REPRESENTATIONS ARE MADE AS TO THE CONDITION OF THE PROPERTY OR ANY HAZARDS CONTAINED THEREIN ARE ANY TO BE IMPLIED.

8234 Pittsburg Ave NW
North Canton, OH 44720
+1 330 966 8800
naispring.com



*DIMENSIONS ARE APPROXIMATE. THIS INFORMATION IS FROM RELIABLE SOURCES BUT IS NOT GUARANTEED AND IS SUBJECT TO CHANGE

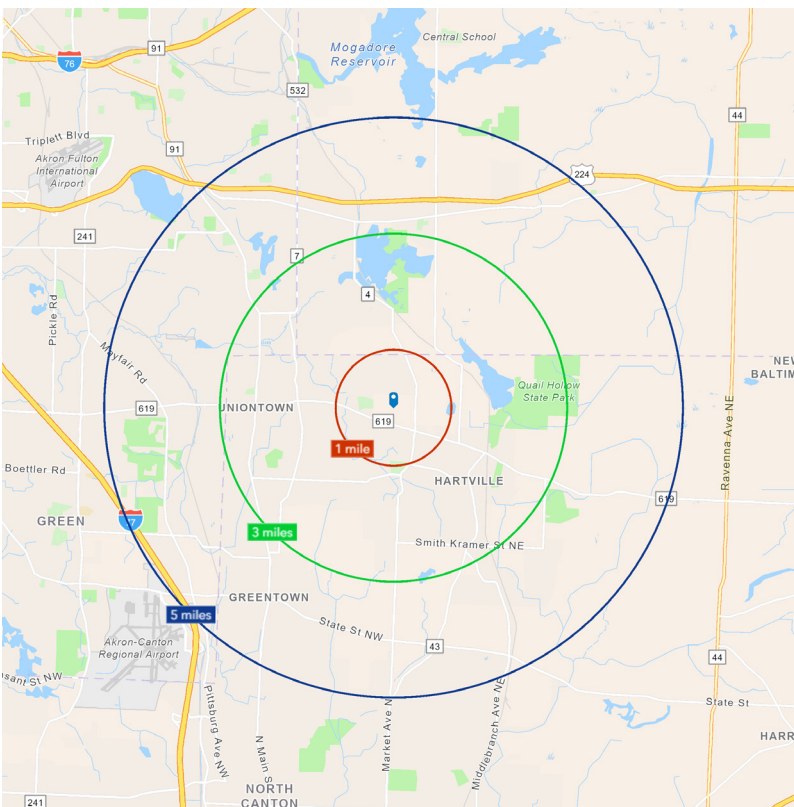
NO WARRANTY OR REPRESENTATION, EXPRESS OR IMPLIED, IS MADE AS TO THE ACCURACY OF THE INFORMATION CONTAINED HEREIN, AND THE SAME IS SUBMITTED SUBJECT TO ERRORS, OMISSIONS, CHANGE OF PRICE, RENTAL OR OTHER CONDITIONS, PRIOR SALE, LEASE OR FINANCING, OR WITHDRAWAL WITHOUT NOTICE, AND OF ANY SPECIAL LISTING CONDITIONS IMPOSED BY OUR PRINCIPALS NO WARRANTIES OR REPRESENTATIONS ARE MADE AS TO THE CONDITION OF THE PROPERTY OR ANY HAZARDS CONTAINED THEREIN ARE ANY TO BE IMPLIED.

8234 Pittsburg Ave NW
North Canton, OH 44720
+1 330 966 8800
naispring.com



NO WARRANTY OR REPRESENTATION, EXPRESS OR IMPLIED, IS MADE AS TO THE ACCURACY OF THE INFORMATION CONTAINED HEREIN, AND THE SAME IS SUBMITTED SUBJECT TO ERRORS, OMISSIONS, CHANGE OF PRICE, RENTAL OR OTHER CONDITIONS, PRIOR SALE, LEASE OR FINANCING, OR WITHDRAWAL WITHOUT NOTICE, AND OF ANY SPECIAL LISTING CONDITIONS IMPOSED BY OUR PRINCIPALS NO WARRANTIES OR REPRESENTATIONS ARE MADE AS TO THE CONDITION OF THE PROPERTY OR ANY HAZARDS CONTAINED THEREIN ARE ANY TO BE IMPLIED.

8234 Pittsburg Ave NW
North Canton, OH 44720
+1 330 966 8800
naispring.com



DEMOGRAPHICS 2025 SUMMARY

	1 MILE	3 MILES	5 MILES
Population	3,925	20,580	51,673
Households	1,473	8,044	20,737
Families	1,105	5,799	14,530
Average Household Size	2.66	2.55	2.49
Owner Occupied Housing Units	1,289	6,700	17,192
Renter Occupied Housing Units	184	1,344	3,545
Median Age	43.1	43.9	44.3
Median Household Income	\$100,309	\$87,175	\$86,046
Average Household Income	\$111,432	\$108,298	\$108,120