

**PRICE
REDUCED!**



W6180 Aerotech Drive, Appleton, WI.

Located in the thriving Fox Cities business corridor near ATW Airport and Fox River Mall, this fully remodeled professional office building presents a rare opportunity for an owner-user, investor, or tenant.

Property Highlights:

- Prime Appleton location with convenient access to Appleton International Airport, Fox River Mall, and Interstate 41
- 15 private professional offices
- 2 large conference rooms
- 26 on-site parking spaces
- Excellent signage visibility on both the front and rear of building
- Recently updated with new carpet, paint, and front siding
- Standalone building offering flexibility and privacy
- Strong traffic counts along College Avenue
- Fiber optic internet throughout

PRICE: WAS: \$895,000 / \$845,000 / NOW: \$799,000

LEASE RATE:	\$16/SF NNN
BUILDING SIZE	6,636 SF
ACRES	0.75
ZONING	COMMERCIAL
PARCEL #	PART OF 111179808
YEAR BUILT	1998
MUNICIPALITY	VILLAGE OF GREENVILLE

For more information:

Jonathan Glassco, SIOR
920.560.5078 • jonathang@naipfefferle.com

NO WARRANTY OR REPRESENTATION, EXPRESS OR IMPLIED, IS MADE AS TO THE ACCURACY OF THE INFORMATION CONTAINED HEREIN, AND THE SAME IS SUBMITTED SUBJECT TO ERRORS, OMISSIONS, CHANGE OF PRICE, RENTAL OR OTHER CONDITIONS, PRIOR SALE, LEASE OR FINANCING, OR WITHDRAWAL WITHOUT NOTICE, AND OF ANY SPECIAL LISTING CONDITIONS IMPOSED BY OUR PRINCIPALS NO WARRANTIES OR REPRESENTATIONS ARE MADE AS TO THE CONDITION OF THE PROPERTY OR ANY HAZARDS CONTAINED THEREIN ARE ANY TO BE IMPLIED.

200 E. Washington Street, Suite 2A
Appleton, WI
920.968.4700
naipfefferle.com

NAIPfefferle

For Sale or Lease
W6180 Aerotech Drive
Appleton, WI



NAIPfefferle

200 E. Washington Street, Suite 2A
Appleton, WI
920.968.4700
naipfefferle.com

NAIPfefferle

For Sale or Lease
W6180 Aerotech Drive
Appleton, WI



NAIPfefferle

200 E. Washington Street, Suite 2A
Appleton, WI
920.968.4700
naipfefferle.com

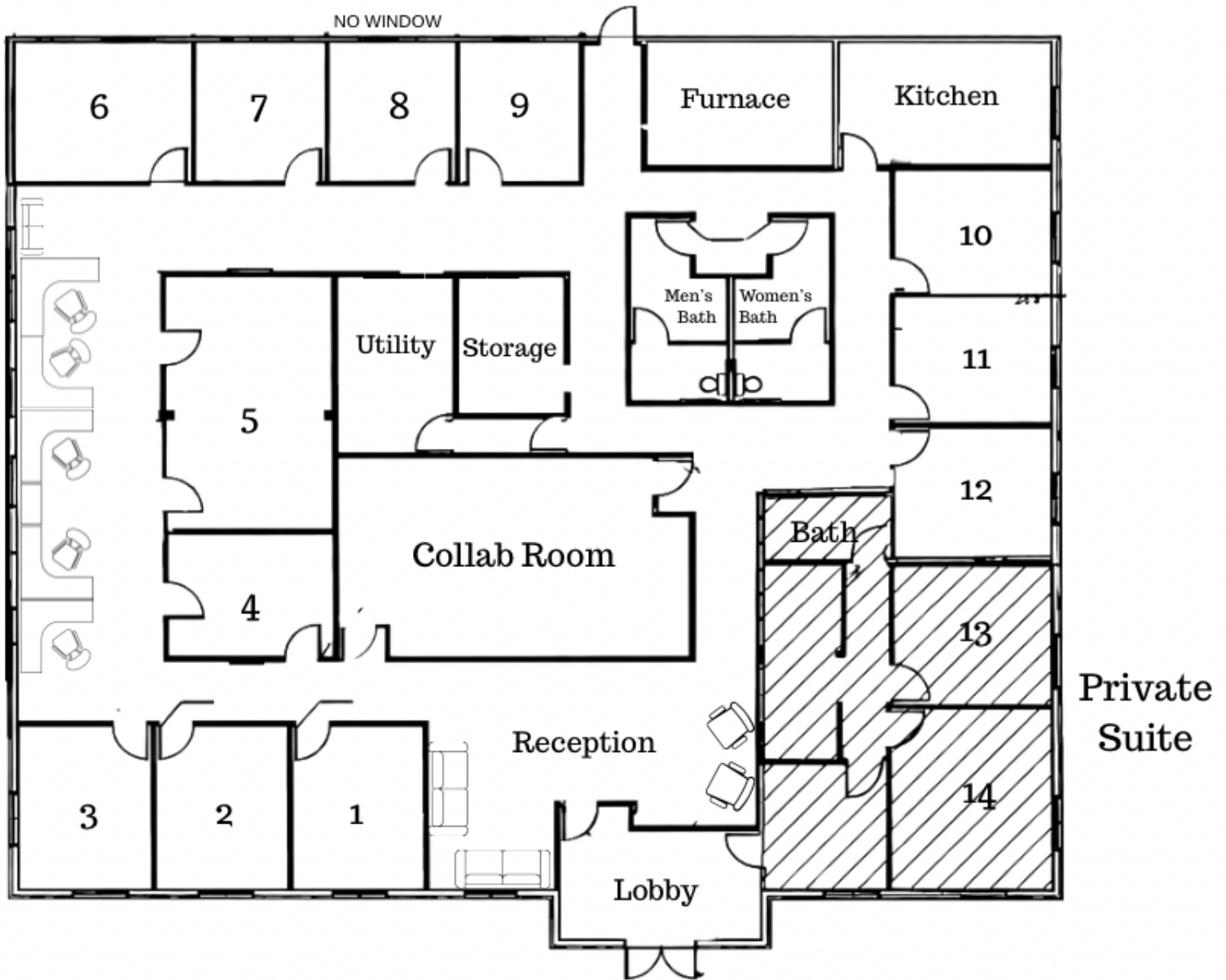
NAI Pfefferle

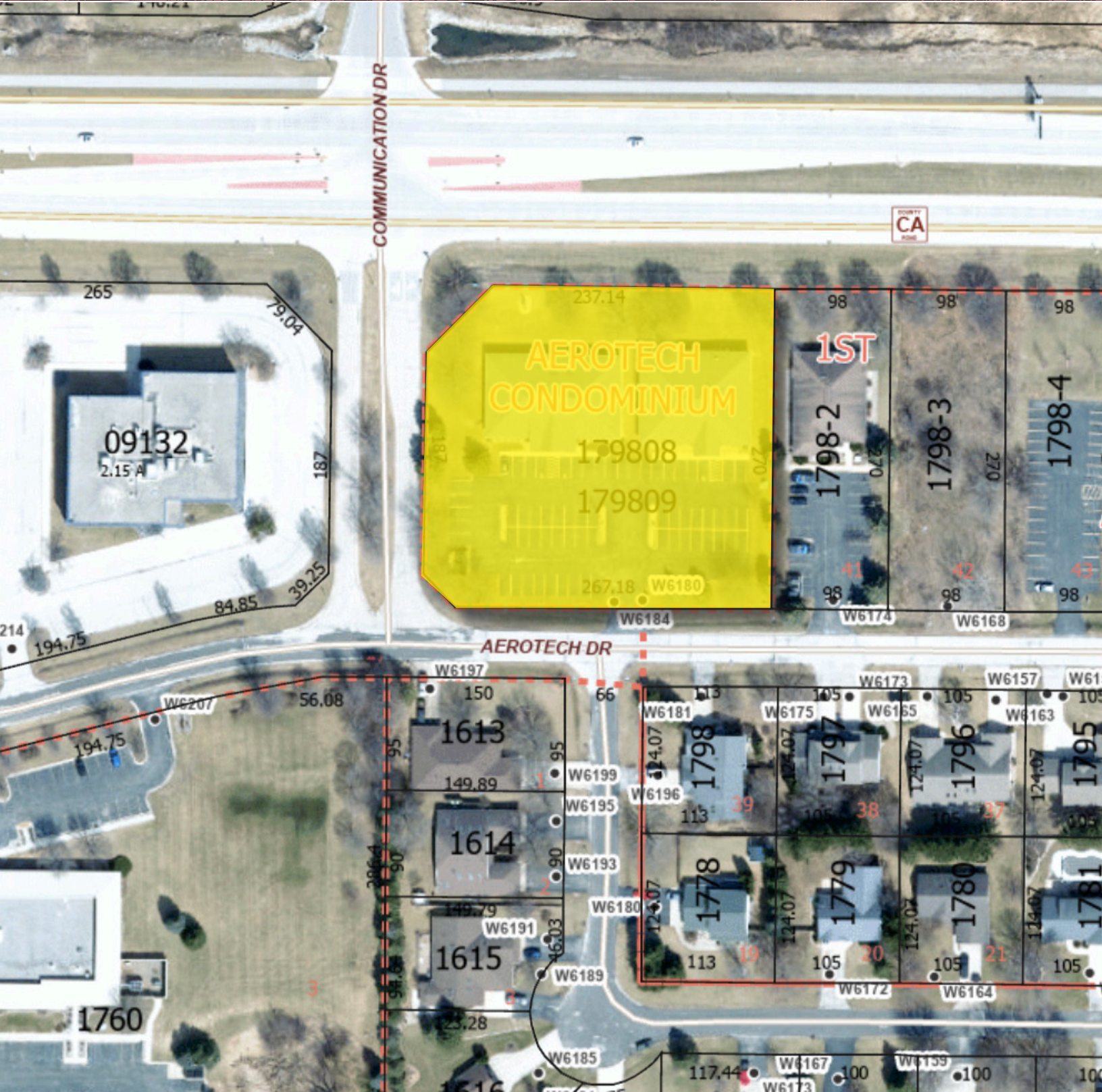
For Sale or Lease
W6180 Aerotech Drive
Appleton, WI



NAI Pfefferle

200 E. Washington Street, Suite 2A
Appleton, WI
920.968.4700
naipfefferle.com





NAIPfefferle

For Sale or Lease
W6180 Aerotech Drive
Appleton, WI



Map data ©2026 Google Imagery ©2026 Airbus. Maxar Technol



Demographics (1, 3 & 5 Mile Radius)

POPULATION



1 MILE:	2,031
3 MILES:	24,405
5 MILES:	92,670



EMPLOYEES

1 MILE:	4,939
3 MILES:	26,352
5 MILES:	68,487

AVERAGE INCOME



1 MILE:	\$126,228
3 MILES:	\$114,972
5 MILES:	\$114,592



BUSINESSES

1 MILE:	304
3 MILES:	1,550
5 MILES:	3,951

AVERAGE HOUSEHOLDS



1 MILE:	928
3 MILES:	10,557
5 MILES:	39,975



TRAFFIC COUNTS (VPD)

W COLLEGE AVENUE	8,004
COUNTY CB	9,038
N MAYFLOWER DRIVE	1,219

STATE OF WISCONSIN BROKER DISCLOSURE



Wisconsin law requires all real estate licensees to give the following information about brokerage services to prospective customers.

Prior to negotiating on your behalf the Brokerage firm, or an agent associated with the firm, must provide you the following disclosure statement.

Disclosure to Customers

You are a customer of NAI Pfefferle (hereinafter Firm). The Firm is either an agent of another party in the transaction or a subagent of another firm that is the agent of another party in the transaction. A broker or a salesperson acting on behalf of the Firm may provide brokerage services to you. Whenever the Firm is providing brokerage services to you, the Firm and its brokers and salespersons (hereinafter Agents) owe you, the customer, the following duties:

- The duty to provide brokerage services to you fairly and honestly.
- The duty to exercise reasonable skill and care in providing brokerage services to you.
- The duty to provide you with accurate information about market conditions within a reasonable time if you request it, unless disclosure of the information is prohibited by law.
- The duty to disclose to you in writing certain Material Adverse Facts about a Property, unless disclosure of the information is prohibited by law.
- The duty to protect your confidentiality. Unless the law requires it, the Firm and its Agents will not disclose your confidential information or the confidential information of other parties.
- The duty to safeguard trust funds and other property held by the Firm or its Agents.
- The duty, when negotiating, to present contract proposals in an objective and unbiased manner and disclose the advantages and disadvantages of the proposals.

Please review this information carefully. An Agent of the Firm can answer your questions about brokerage services, but if you need legal advice, tax advice, or a professional home inspection, contact an attorney, tax advisor, or home inspector. This disclosure is required by section 452.135 of the Wisconsin statutes and is for information only. It is a plain-language summary of the duties owed to a customer under section 452.133(1) of the Wisconsin statutes.

Confidentiality Notice to Customers

The Firm and its Agents will keep confidential any information given to the Firm or its Agents in confidence, or any information obtained by the Firm or its Agents that a reasonable person would want to be kept confidential, unless the information must be disclosed by law or you authorize the Firm to disclose particular information. The Firm and its Agents shall continue to keep the information confidential after the Firm is no longer providing brokerage services to you.

No representation is made as to the legal validity of any provision or the adequacy of any provision in any specific transaction.

The following information is required to be disclosed by law:

1. Material Adverse Facts, as defined in section 452.01(5g) of the Wisconsin Statutes (see definition below).
2. Any facts known by the Firm or its Agents that contradict any information included in a written inspection report on the property or real estate that is the subject of the transaction.

To ensure that the Firm and its Agents are aware of what specific information you consider confidential, you may list that information below or provide that information to the Firm or its Agents by other means. At a later time, you may also provide the Firm or its Agents with other information you consider to be confidential.

CONFIDENTIAL INFORMATION

NON-CONFIDENTIAL INFORMATION

(the following information may be disclosed to the Firm and its Agents)

(Insert information you authorize to be disclosed, such as financial qualification information.)

Definition of Material Adverse Facts

A “Material Adverse Fact” is defined in Wis. Stat. 452.01(5g) as an Adverse Fact that a party indicates is of such significance, or that is generally recognized by a competent licensee as being of such significance to a reasonable party, that it affects or would affect the party’s decision to enter into a contract or agreement concerning a transaction or affects or would affect the party’s decision about the terms of such a contract or agreement.

An “Adverse Fact” is defined in Wis. Stat. 452.01(1e) as a condition or occurrence that a competent licensee generally recognizes will significantly and adversely affect the value of the property, significantly reduce the structural integrity of improvements to real estate, or present a significant health risk to occupants of the property; or information that indicates that a party to a transaction is not able to or does not intend to meet his or her obligations under a contract or agreement made concerning the transaction.

Notice About Sex Offender Registry

You may obtain information about the sex offender registry and persons registered with the registry by contacting the Wisconsin Department of Corrections on the Internet at <http://www.doc.wi.gov> or by telephone at 608-240-5830.