

# 39th St & Garrity Blvd

Build-To-Suit or Ground Lease

3900 Garrity Blvd, Nampa, ID 83687



## Highlights

- 0.85 acre pad at a signalized corner in one of the tightest retail corridors in the Boise Valley.
- Tremendous fast food sales volumes along the Garrity corridor.
- Large retailers nearby include Wendys, Winco, Saint Alphonsus, Jimmy Johns, McDonalds, Taco Bell, Starbucks, and Panda Express.
- Garrity Boulevard is one of only 3 primary roadway arterials in Nampa.
- High traffic counts with 32,281 vehicles per day.
- Zoned BC (Business Commercial). Allowed uses can be [found here](#).

## Description

The City of Nampa has experienced rapid growth over the last few years and it has gone from a small town to a large urban center. Nampa's population which is currently 106,000, has doubled over the last two decades, and by 2040, COMPASS expects it to rise to 150,000+. More people means more residential and commercial services needed. Many successful businesses from various industries have proudly chosen Nampa due to the low cost of doing business and their friendly pro-business climate.

## Demographics:

	1 mi.	3 mi.	5 mi.
Pop	3,881	52,091	142,299
Median HH Income	\$66,740	\$68,689	\$78,350
Daytime Pop	8,760	62,267	138,061

Ben Zamzow, CCIM SCLS  
 Office: 208 345 7030 ext. 214  
 Mobile: 208 859 5938  
 bmz@rmcos.com

[www.rmcos.com](http://www.rmcos.com)

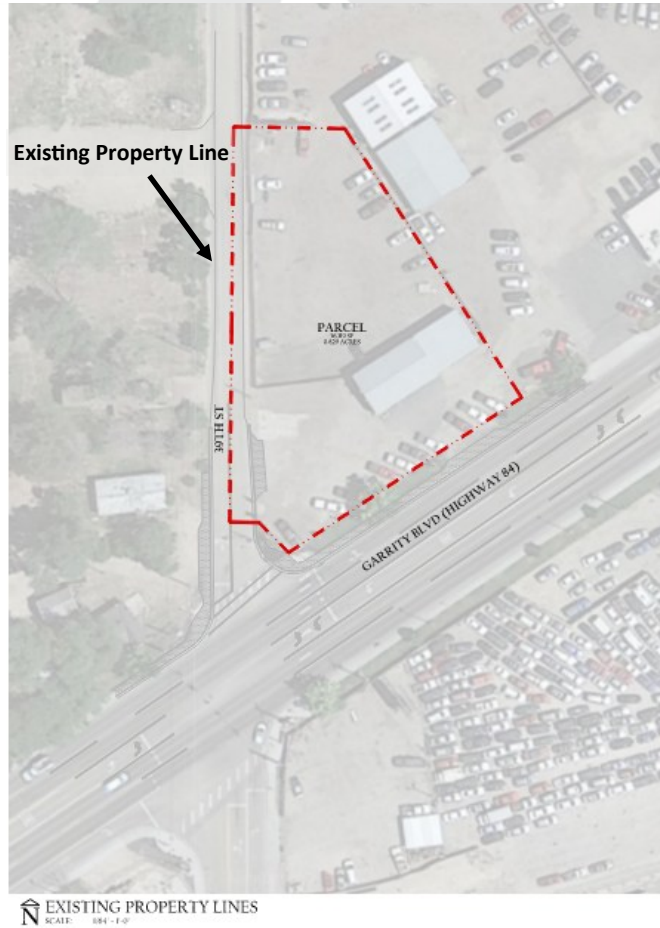
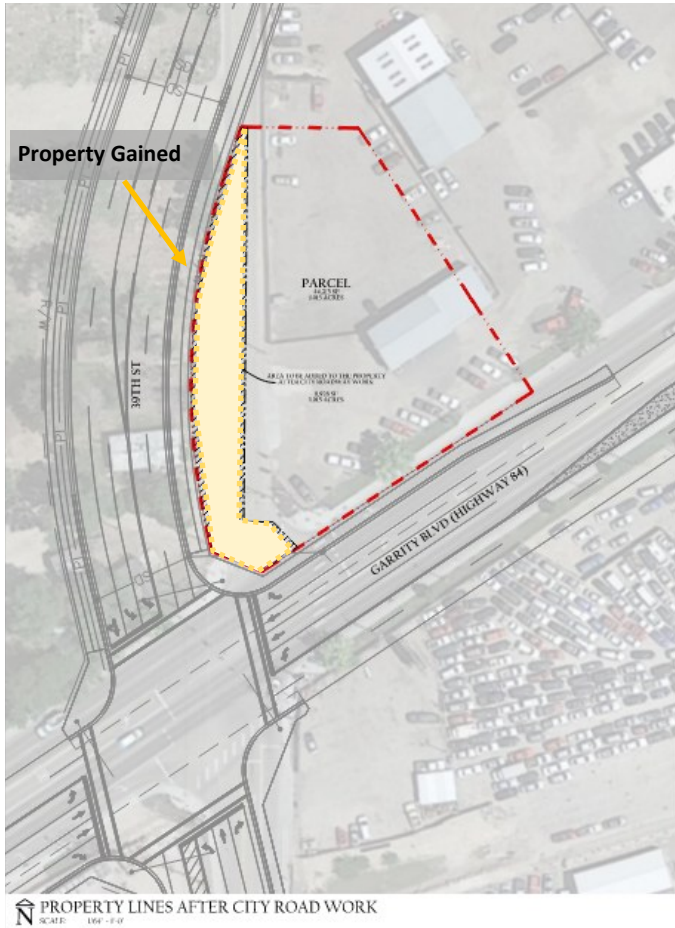
Brian Watt  
 Office: 208 345 7030 ext. 209  
 Mobile: 208 841 4688  
 bw@rmcos.com



350 N. 9th Street, Ste 200, Boise ID 83702

# Intersection Project

## Ultimate Intersection Design Plans 2025 Full Realignment of Intersection "Skew"



The following changes have been recommended for the Garry Blvd & 39th Street Intersection:

- Realign 39th Street to reduce the intersection skew.
- Add a southbound left-turn lane on 39th Street.
- Restripe the northbound approach on 39th Street to feature a left-turn lane and a shared through/right lane to match the southbound approach.
- Add 100-foot right-turn lane for the southwest-bound approach on Garry Blvd.
- Design in 2024
- Construction in 2025

Ben Zamzow, CCIM SCLS  
Office: 208 345 7030 ext. 214  
Mobile: 208 859 5938  
bmz@rmcos.com  
[www.rmcos.com](http://www.rmcos.com)

Brian Watt  
Office: 208 345 7030 ext. 209  
Mobile: 208 841 4688  
bw@rmcos.com

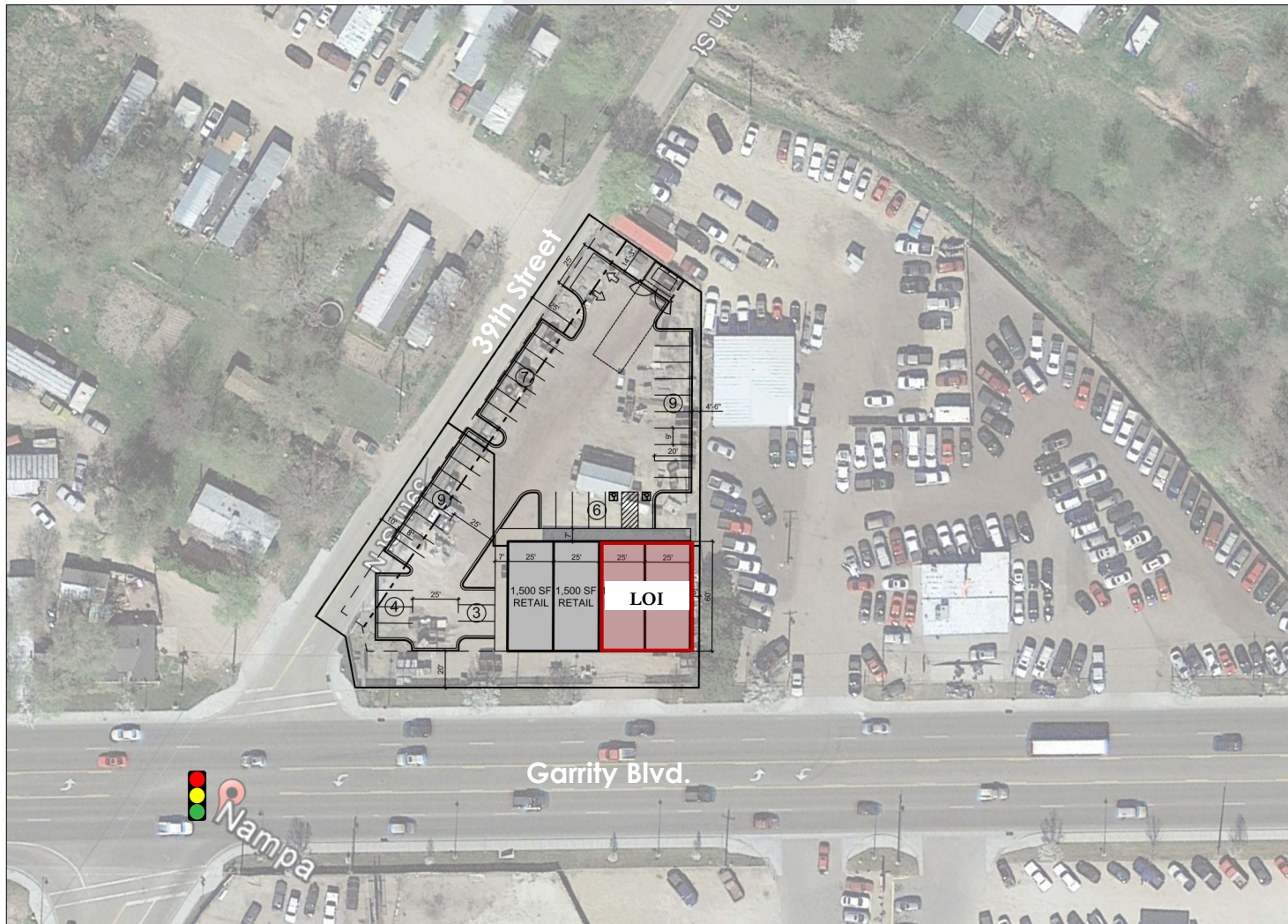
# Single Tenant Site Plan



Ben Zamzow, CCIM SCLS  
Office: 208 345 7030 ext. 214  
Mobile: 208 859 5938  
bmz@rmcos.com  
[www.rmcos.com](http://www.rmcos.com)

Brian Watt  
Office: 208 345 7030 ext. 209  
Mobile: 208 841 4688  
bw@rmcos.com

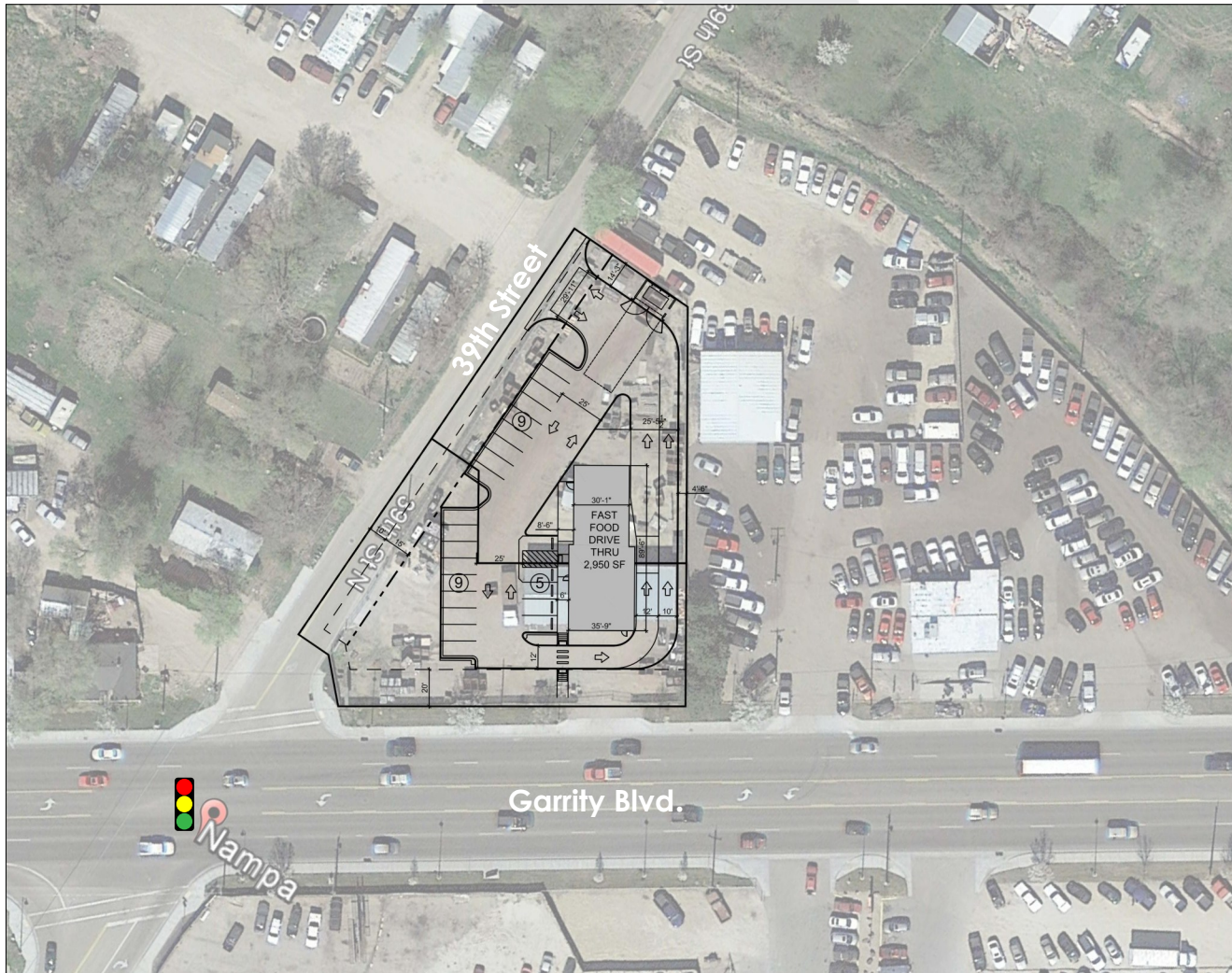
# Multi-Tenant Retail Site Plan



Ben Zamzow, CCIM SCLS  
Office: 208 345 7030 ext. 214  
Mobile: 208 859 5938  
bmz@rmcos.com  
[www.rmcos.com](http://www.rmcos.com)

Brian Watt  
Office: 208 345 7030 ext. 209  
Mobile: 208 841 4688  
bw@rmcos.com

# Fast Food Site Plan



Ben Zamzow, CCIM SCLS  
Office: 208 345 7030 ext. 214  
Mobile: 208 859 5938  
bmz@rmcos.com  
[www.rmcos.com](http://www.rmcos.com)

Brian Watt  
Office: 208 345 7030 ext. 209  
Mobile: 208 841 4688  
bw@rmcos.com

Rocky Mountain  
COMPANIES

350 N. 9th Street, Ste 200, Boise ID 83702

# Aerial - Close Up



Ben Zamzow, CCIM SCLS  
Office: 208 345 7030 ext. 214  
Mobile: 208 859 5938  
bmz@rmcos.com  
[www.rmcos.com](http://www.rmcos.com)

Brian Watt  
Office: 208 345 7030 ext. 209  
Mobile: 208 841 4688  
bw@rmcos.com

# Aerial



Ben Zamzow, CCIM SCLS  
Office: 208 345 7030 ext. 214  
Mobile: 208 859 5938  
bmz@rmcos.com  
[www.rmcos.com](http://www.rmcos.com)

Brian Watt  
Office: 208 345 7030 ext. 209  
Mobile: 208 841 4688  
bw@rmcos.com

Rocky Mountain  
COMPANIES  
350 N. 9th Street, Ste 200, Boise ID 83702