

INNOVO 



FOR LEASE | INDUSTRIAL

 **GATEWAY**
INDUSTRIAL CENTER

12601 Southfield Freeway | Detroit, MI



Colliers Detroit
400 W 4th Street, Suite 350
Royal Oak, MI 48067
colliers.com/detroit



PROPERTY OVERVIEW



Gateway Industrial Center is a Multi-Building Complex
Totaling 1,440,700 SF

- 175,000 SF Available for Immediate Occupancy
- 140,000 SF Additional Space Available End of 2024



Immediately Adjacent to I-96 and Southfield Freeway



Easy Access to I-94 & I-75



Improved Campus Includes: Upgraded Power, Roads,
Paved Parking, Landscaping and Signage.



Up to 40' Clear Heights and ESFR Available



Heavy Power on Site



Ample Outdoor Trailer Storage and Staging Area



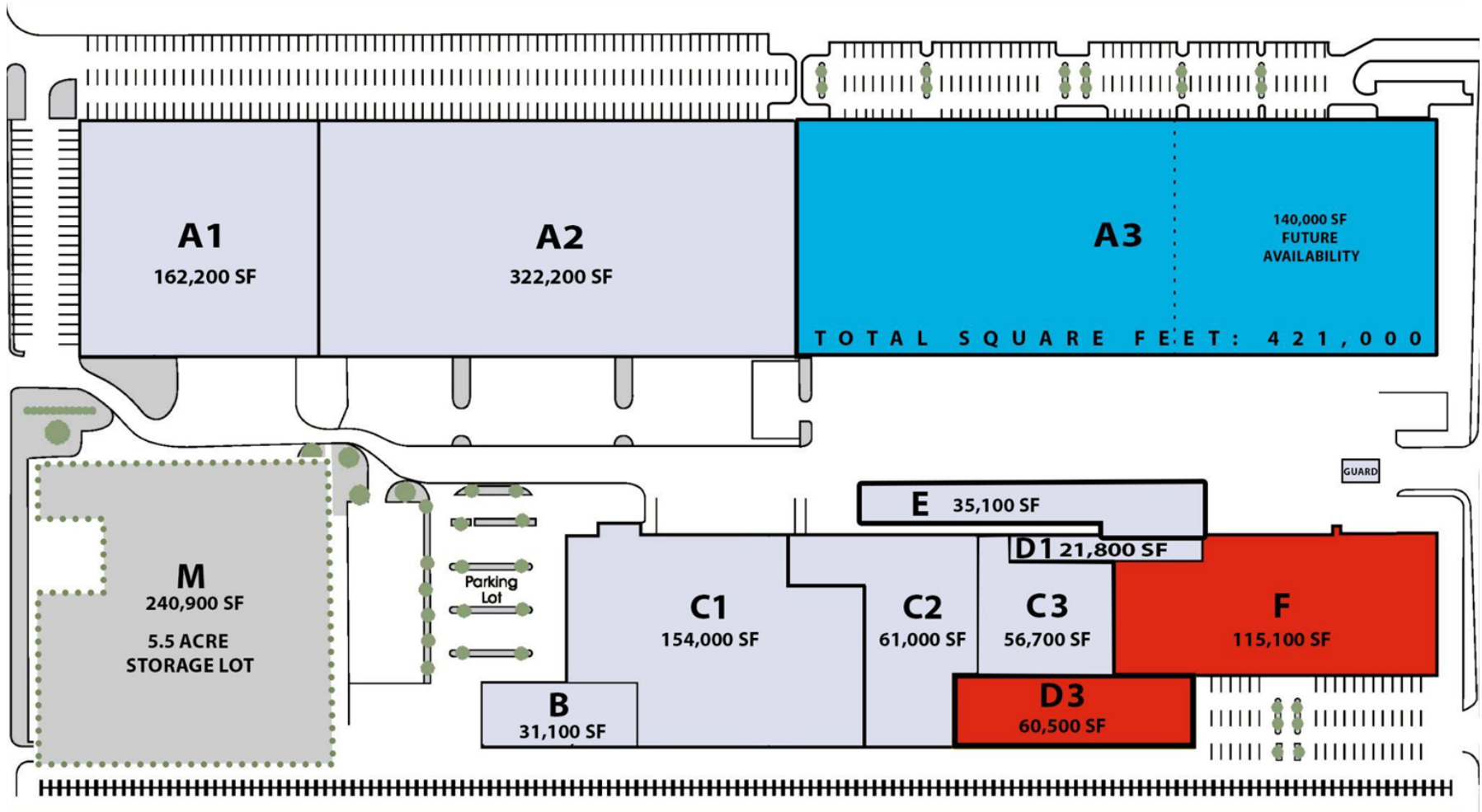
Professional On-site Management



HIGHWAY ACCESSIBILITY



PROPERTY SITE PLAN

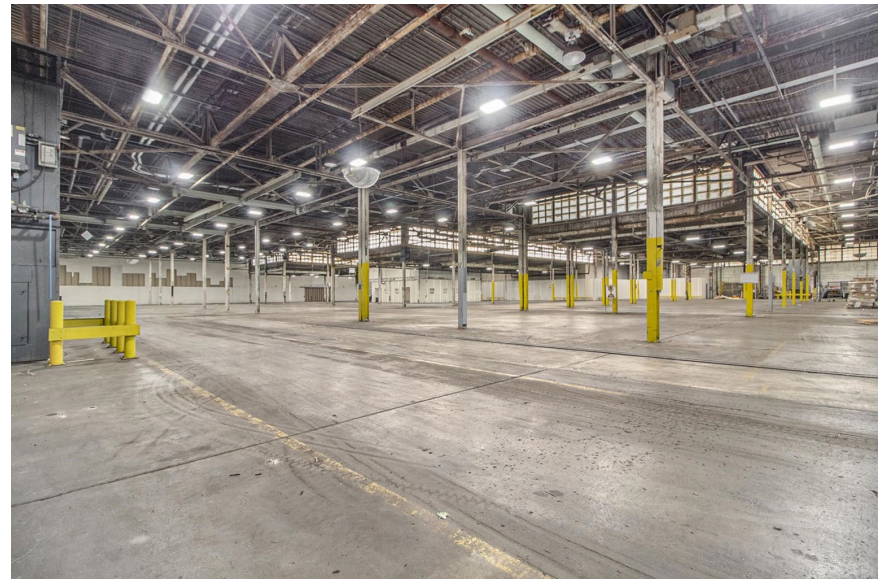


| Space | Square Footage | Lease Rate | Available |
|-----------|----------------|------------|-------------|
| Unit D3 | 60,500 SF | \$5.95/Sf | Immediately |
| Unit F | 115,100 SF | \$5.95/Sf | Immediately |
| Unit D3/F | 175,600 SF | \$5.95/Sf | Immediately |

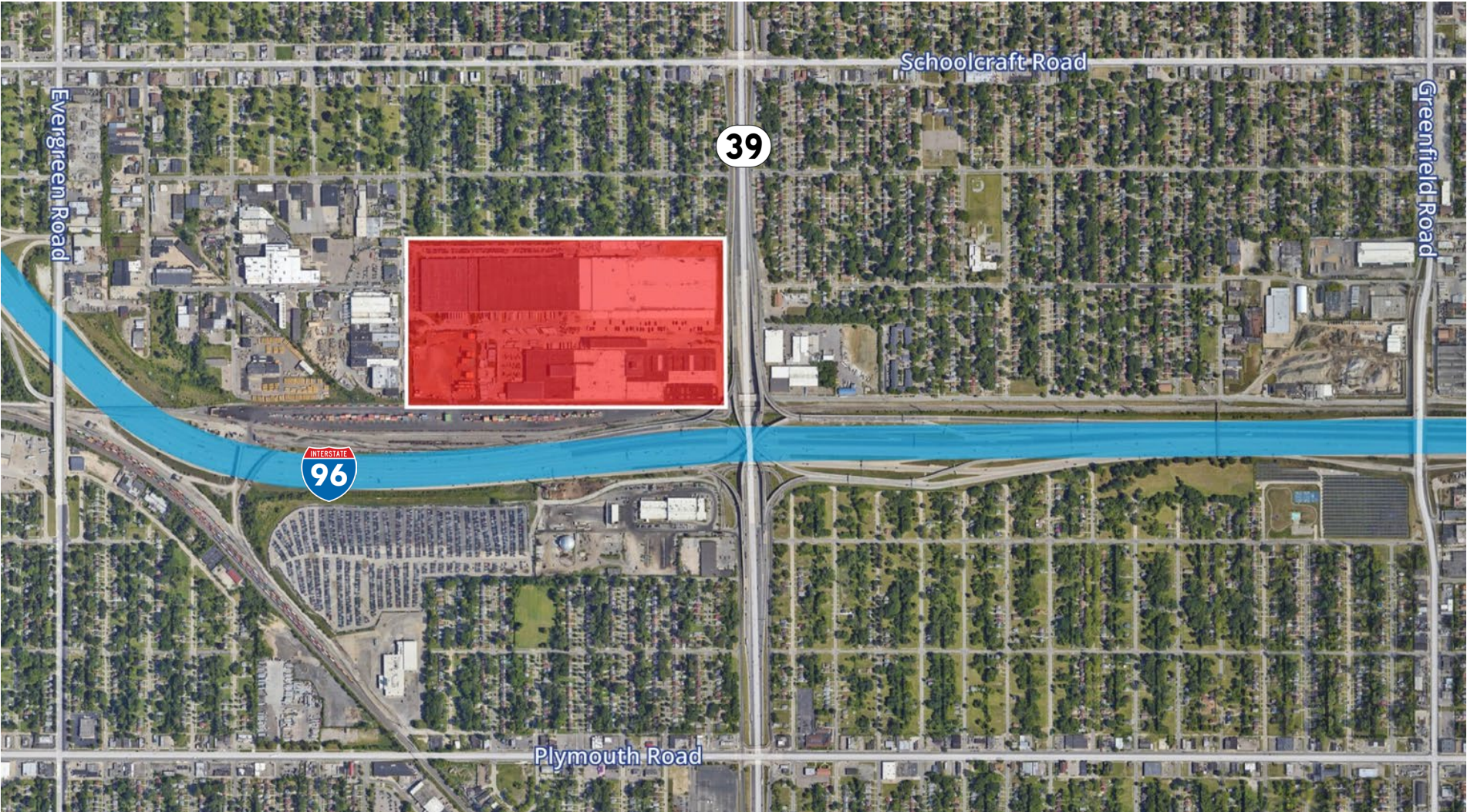
EXTERIOR PROPERTY PHOTOS



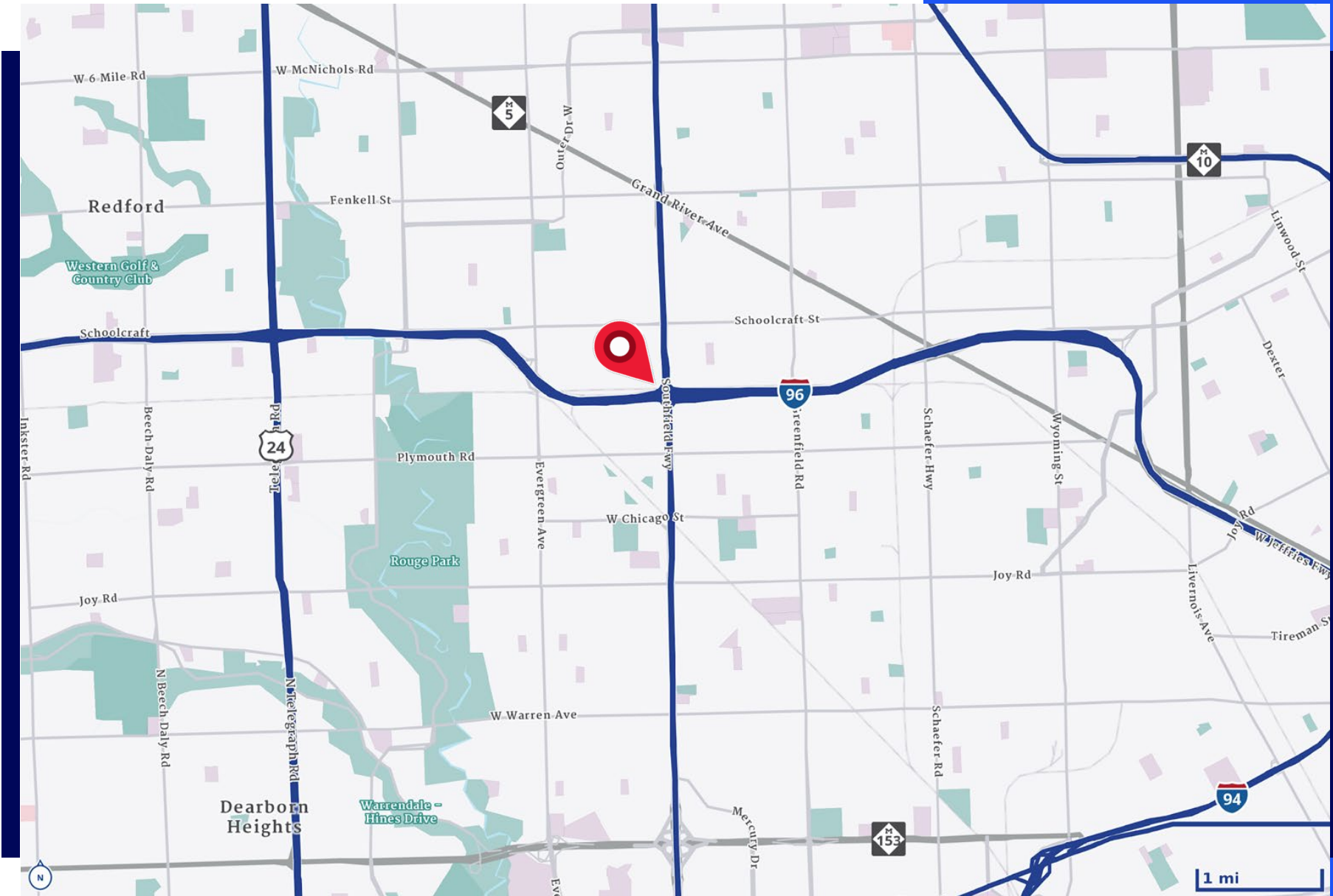
INTERIOR PROPERTY PHOTOS



LOCATION AERIAL



LOCATION MAP



FOR LEASE | INDUSTRIAL

GATEWAY **INDUSTRIAL CENTER**

12601 Southfield Freeway | Detroit, MI



Gary Grochowski, SIOR
Senior Vice President
248 226 1856
gary.grochowski@colliers.com



Bryan Barnas
Associate Vice President
248 226 1638
bryan.barnas@colliers.com



Berge Avesian
Associate
248 226 1800
berge.avesian@colliers.com



Colliers Detroit
400 W 4th Street, Suite 350
Royal Oak, MI 48067
colliers.com/detroit

*We have no reason to doubt the accuracy of information contained herein, but we cannot guarantee it.
All information should be verified prior to purchase and/or lease.*

