

FOR SALE

66,000 SF FREESTANDING DOCK-HIGH FACILITY ON 8.10 IMPROVED ACRES



**15490 VICKERY
DRIVE**

HOUSTON, TX 77032



[CLICK HERE FOR FLOOR PLANS](#)

PROPERTY OVERVIEW

Building Highlights

- 66,000 SF Total
- 18,000 SF Office
- 24' Clear Height
- 13 Dock-High Doors
- 4 Semi-Dock Doors
- 3 Drive-In Ramps
- Fully Sprinklered
- Stabilized Outside Storage
- 600 amp / 480 volt / 3 phase power

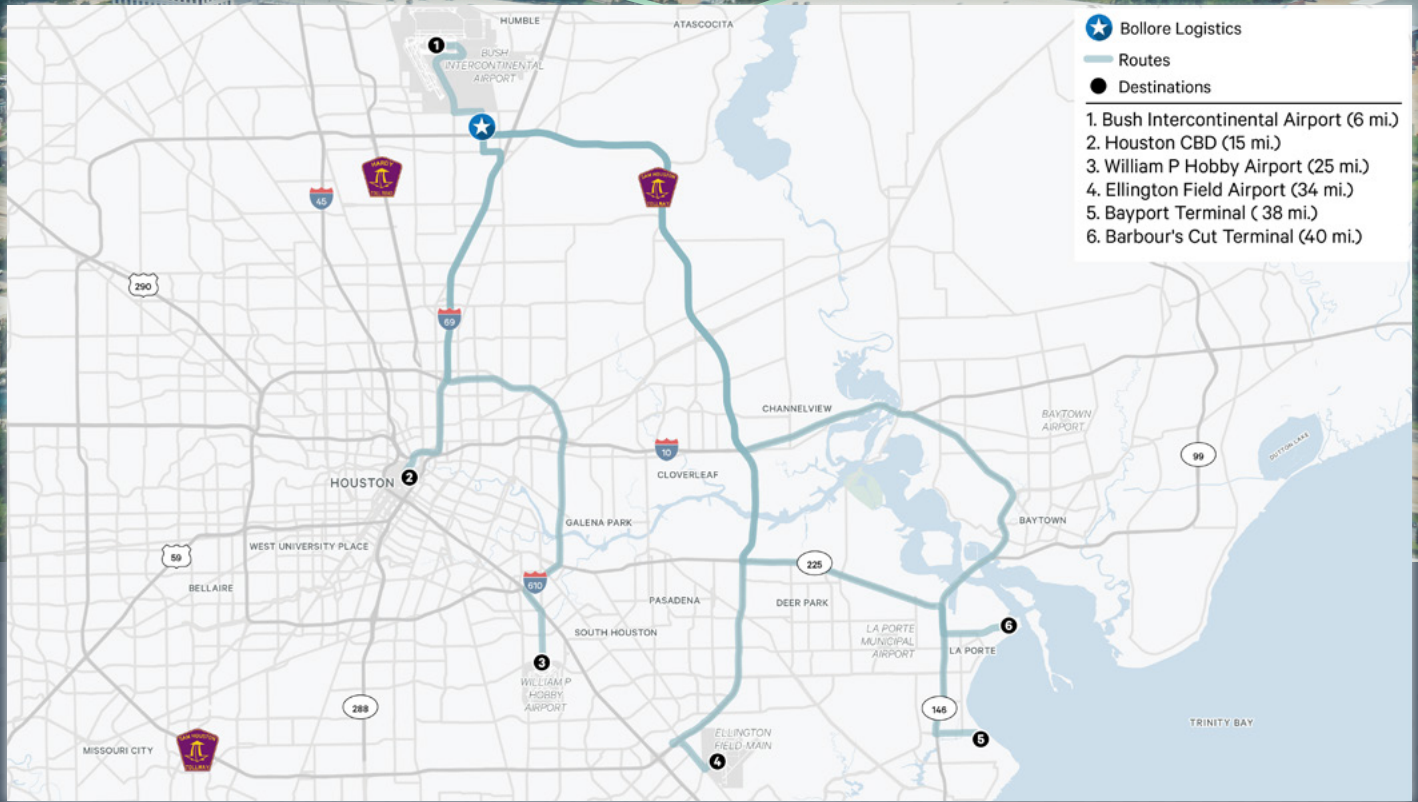
**LOCATED ON 8.10
IMPROVED ACRES**

**MINUTES FROM IAH
IN WORLD HOUSTON
BUSINESS PARK**

**EASY ACCESS TO
BELTWAY 8, I-45, AND
HARDY TOLL ROAD**

FREESTANDING

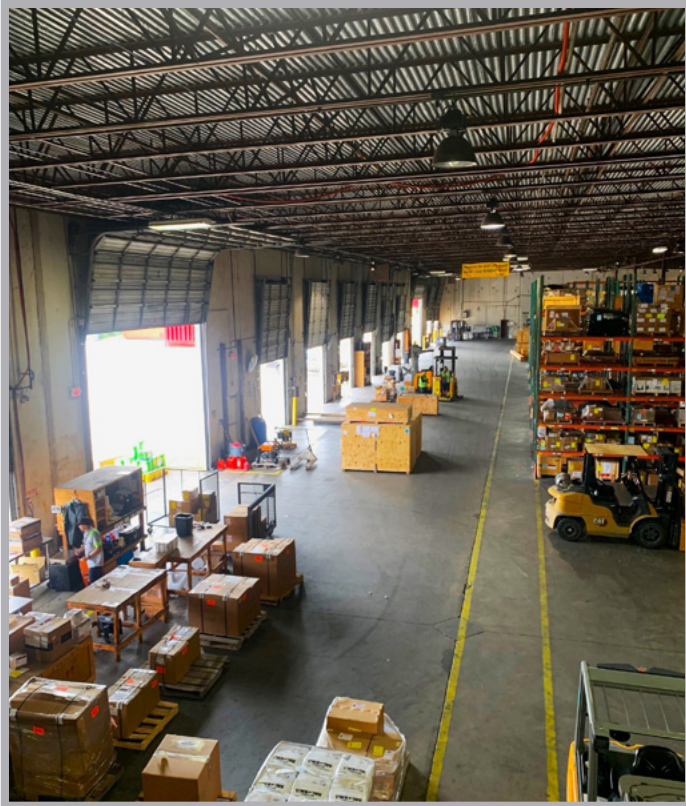
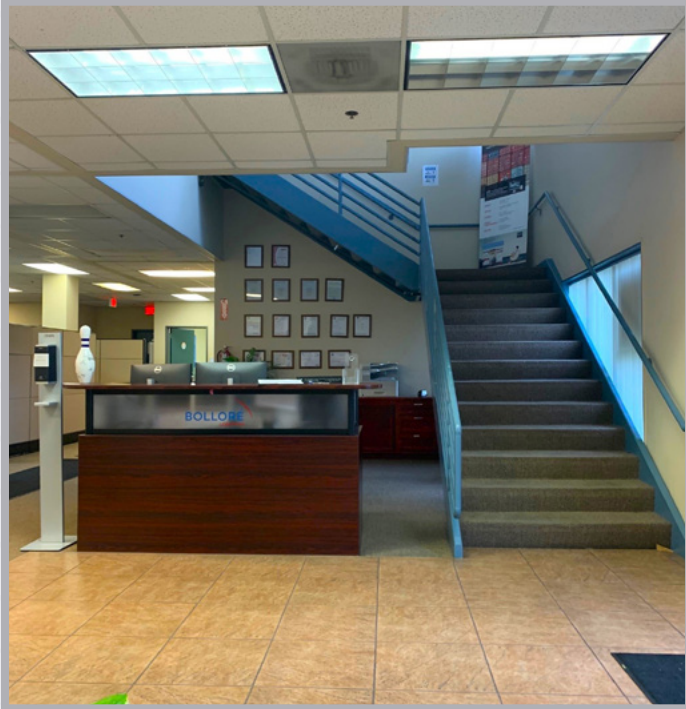
GEORGE BUSH INTERCONTINENTAL AIRPORT

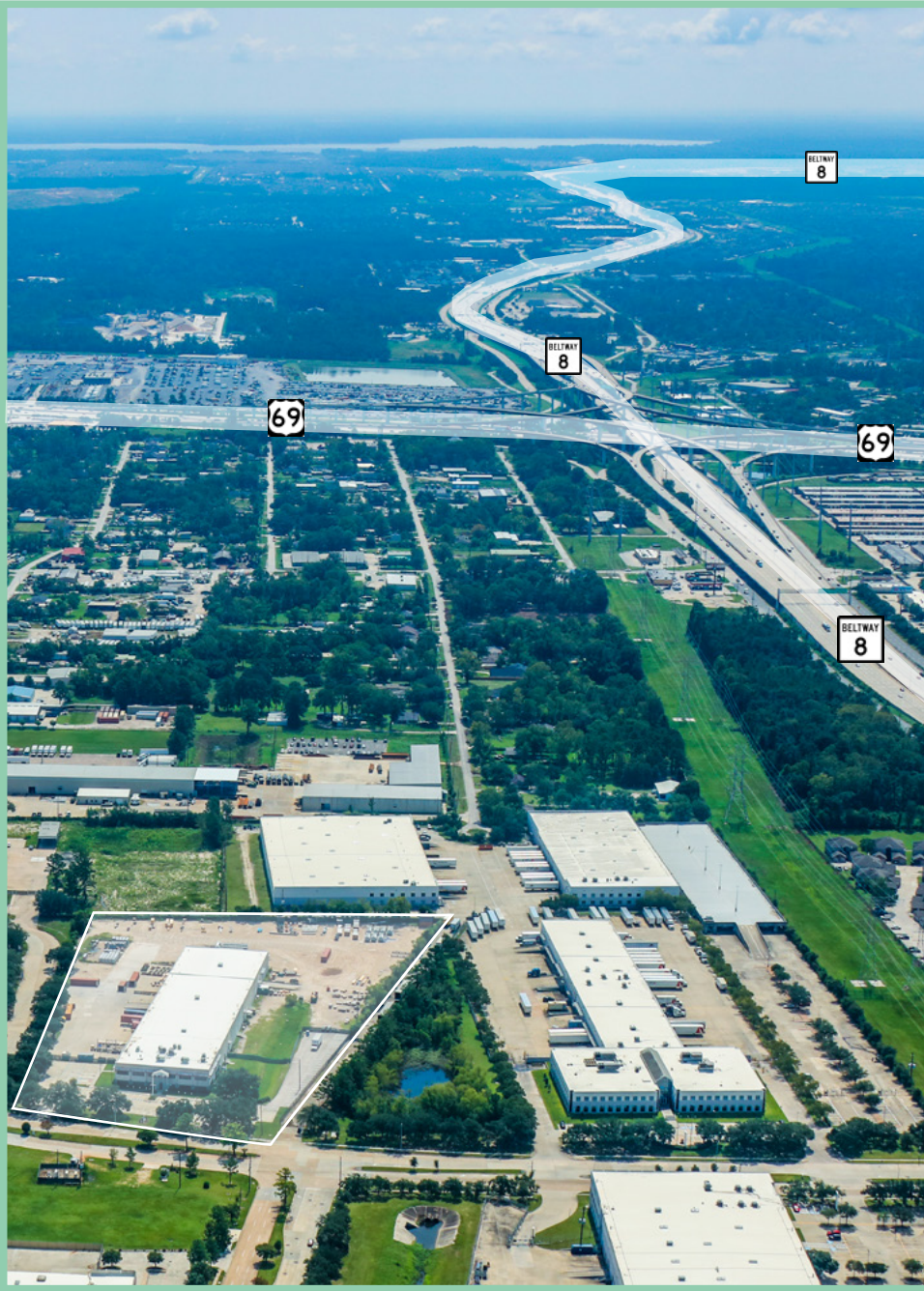


DRIVE TIMES

HOUSTON, TX 77032

INTERIOR PHOTOS





15490 VICKERY DRIVE

FOR SALE

66,000 SF
FREESTANDING
DOCK-HIGH

8.10 IMPROVED
ACRES

NATHAN WYNNE
Executive Vice President

+1 713 577 1724
Nathan.Wynne@cbre.com

GREG HOLMES
Senior Associate

+1 713 577 1902
Gregory.Holmes@cbre.com

© 2024 CBRE, Inc. All rights reserved. This information has been obtained from sources believed reliable but has not been verified for accuracy or completeness. CBRE, Inc. makes no guarantee, representation or warranty and accepts no responsibility or liability as to the accuracy, completeness, or reliability of the information contained herein. You should conduct a careful, independent investigation of the property and verify all information. Any reliance on this information is solely at your own risk. CBRE and the CBRE logo are service marks of CBRE, Inc. All other marks displayed on this document are the property of their respective owners, and the use of such marks does not imply any affiliation with or endorsement of CBRE. Photos herein are the property of their respective owners. Use of these images without the express written consent of the owner is prohibited.