



LOGAN RETAIL SPACE AVAILABLE

1205 North Main St. in Logan

1,905 SF

PROPERTY DETAILS



- \$17.00 PSF, NNN
- 2020 CAM \$3.89 PSF
- Located Adjacent to Sam's Club, Home Depot & Cache Valley Mall
- High Traffic Location With Multiple Points of Entry
- Ample Parking

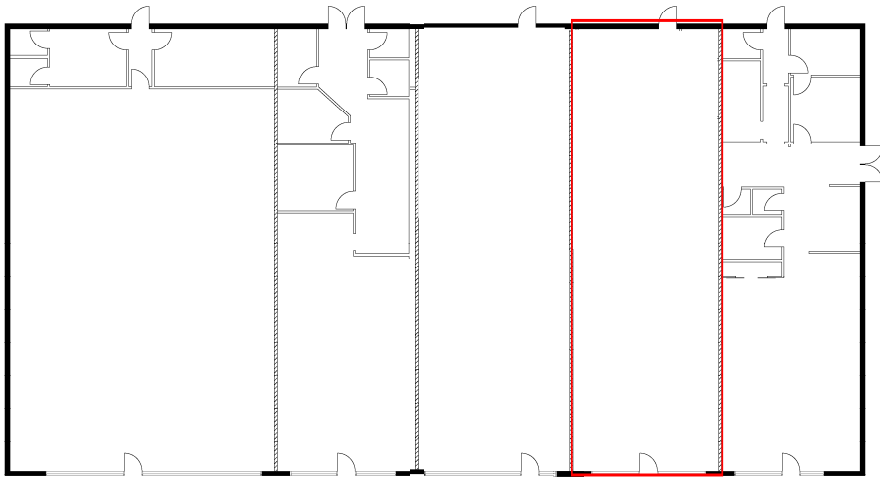


32,000 Average Daily Traffic Count





Floorplan



Demographics 1205 N. Main Street Logan, UT 84341

	1M	3M	5M
Population	11,374		
2023 Est. Population	12,306	62,890	89,340
Household Income	\$52,683	\$63,117	\$67,245
Employers	963	2,626	3,267



PRESENTED BY
PETER BLACK
 PETER@FUTRCOMMERCIAL.COM
 801.858.0627

WWW.FUTRCOMMERCIALADVISORS.COM