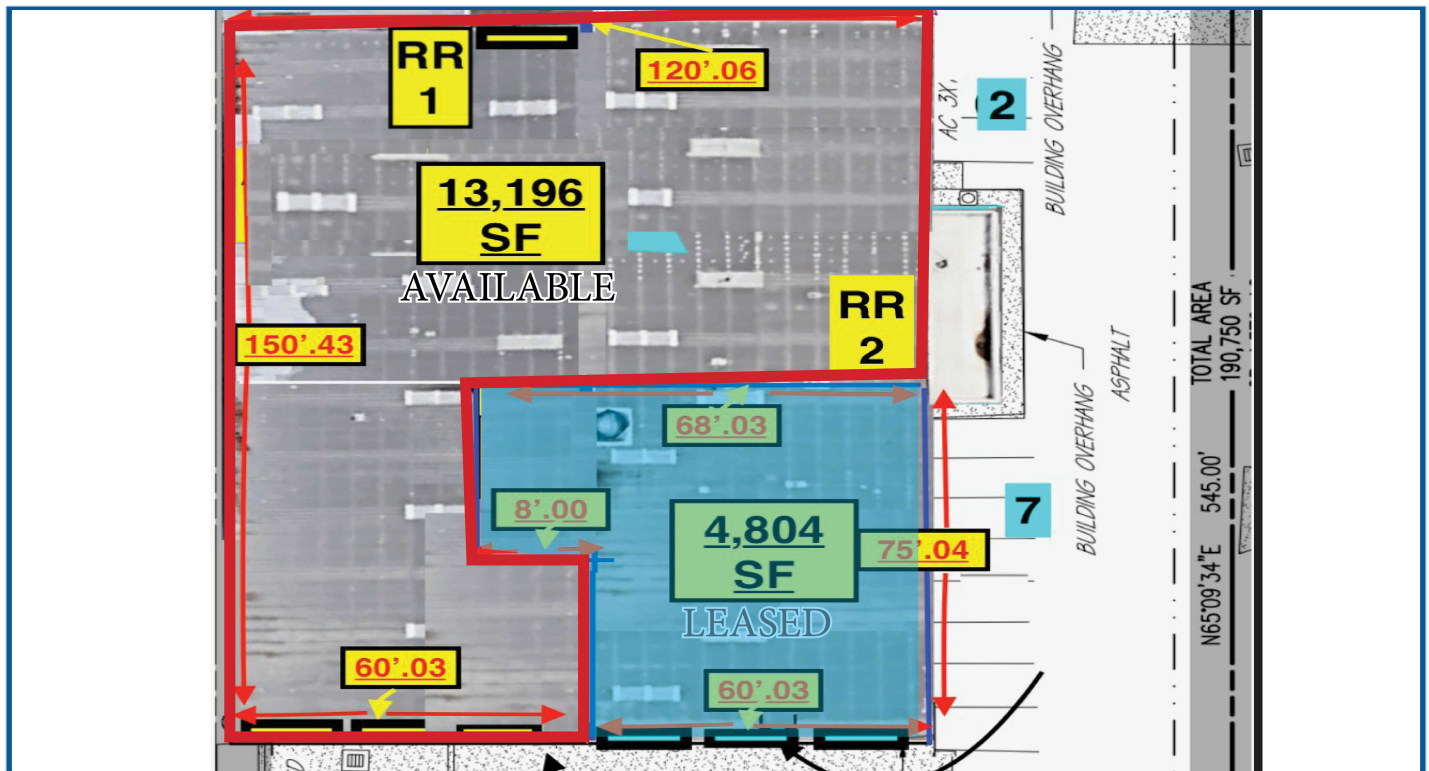


AVAILABLE

11080 Air Park Road Ashland, VA 23005



Exclusive Agent:

KEVIN COX, SIOR
(804) 521-1468
Kevin@porterinc.com

HIGHLIGHTS

- Up to 13,196 SF +/- Office/Warehouse Available
- Includes 1,000 SF +/- Office with Full Kitchen
- Zoned M-3
- 3 Phase Power
- 50 Parking Spaces +/-
- 2 Loading Docks
- 2 Drive-In Doors 12'x14'
- Located in the Hanover Industrial Air Park
- Proximate to I-95 (Sliding Hill Rd Exit)
- Fenced & Graveled Yard Area
- FOR LEASE: \$15.00/SF NNN

4801 Radford Avenue | P.O. Box 6482
Richmond, VA 23230
www.porterinc.com
804-353-7994

PORTER
REALTY

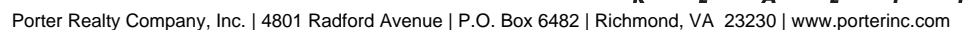
CORFAC
INTERNATIONAL

SIOR

CCIM

This information has been prepared by Porter Realty Company, Inc. for marketing purposes only. No representation or warranty, expressed or implied, is made as to the accuracy of the foregoing information. Terms of sale or lease and availability are subject to change or withdrawal without notice.

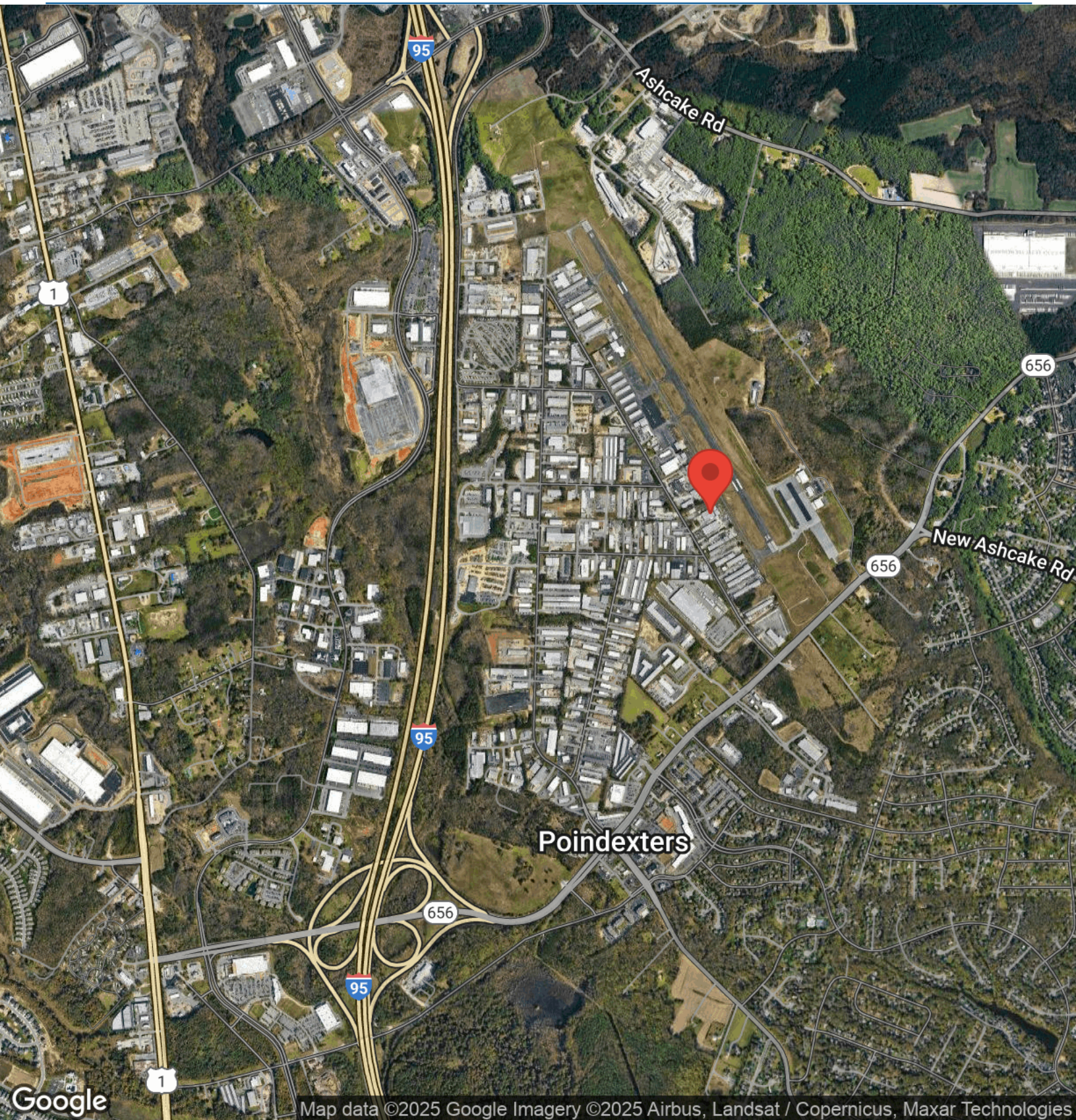
11080 Air Park Road | Ashland, VA 23005



This information has been prepared by Porter Realty Company, Inc. for marketing purposes only. No representation or warranty, expressed or implied, is made as to the accuracy of the foregoing information.
Terms of sale or lease and availability are subject to change or withdrawal without notice.

AERIAL MAP

11080 Air Park Road | Ashland, VA 23005



Kevin Cox, SIOR
(804) 521-1468
Kevin@porterinc.com



Porter Realty Company, Inc. | 4801 Radford Avenue | P.O. Box 6482 | Richmond, VA 23230 | www.porterinc.com

This information has been prepared by Porter Realty Company, Inc. for marketing purposes only. No representation or warranty, expressed or implied, is made as to the accuracy of the foregoing information. Terms of sale or lease and availability are subject to change or withdrawal without notice.