



Professional Office Building For Lease



- **Price: \$17.00/SF/Yr**
- **Size: 2,729 MOL SF**
- **Zoning: C-2**
- **Located on Alt 19 adjacent to the CVS on the NE corner of Tampa Rd and Alt 19**



Wyatt Wikle

Executive Associate, Wikle Real Estate

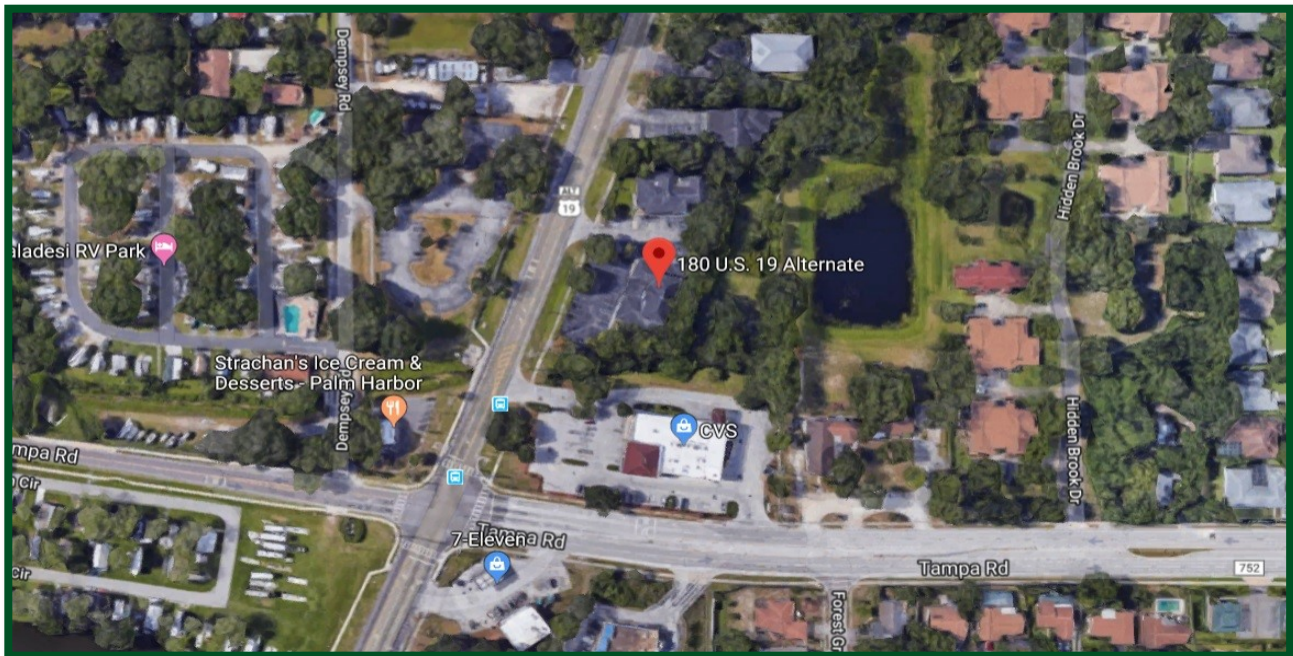
(727) 366-9391

wyatt@wiklerealestate.com



PROPERTY OVERVIEW

ADDRESS:	180 Alternate 19 , Palm Harbor, FL 34683
PRICE:	\$17.00/SF/YR
LEASE TERMS:	Modified Gross
YEAR BUILT:	1997
ZONING:	C-2
LEASE TYPE:	Direct Lease
LOCATION:	Located on Alt 19 adjacent to the CVS on the NE corner of Tampa Rd and Alt 19
DESCRIPTION:	2,729 more or less SF available right on Alt 19 in Palm Harbor. Available for professional office space.
SHOWING INFORMATION:	Contact Agent



The information contained herein has been obtained through sources deemed reliable but cannot be guaranteed as to its accuracy. Any information of special interest should be obtained through independent verification.