

±24,062 SF Available

Suite 200 For Lease

3505 Thayer Court
Aurora, IL 60504
www.cbre.com/properties

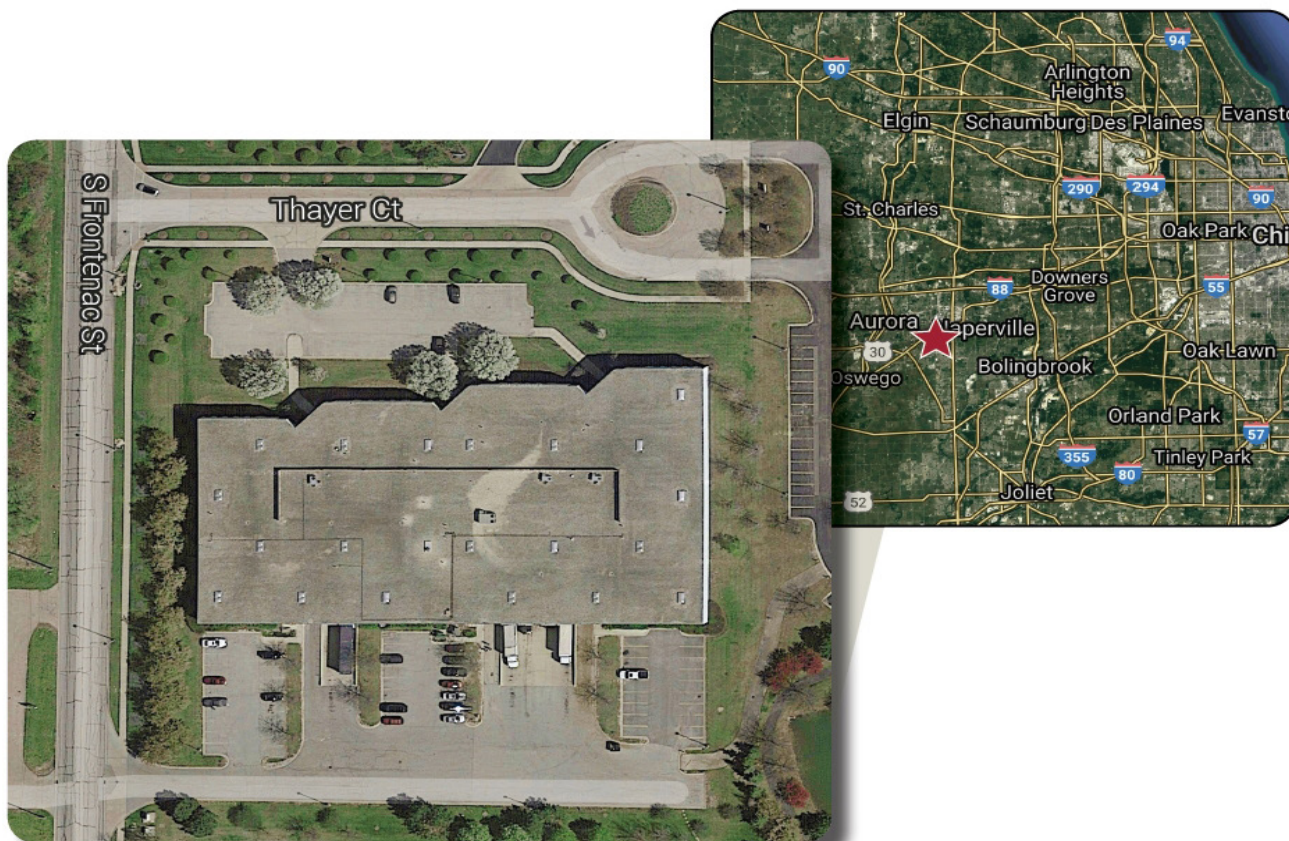
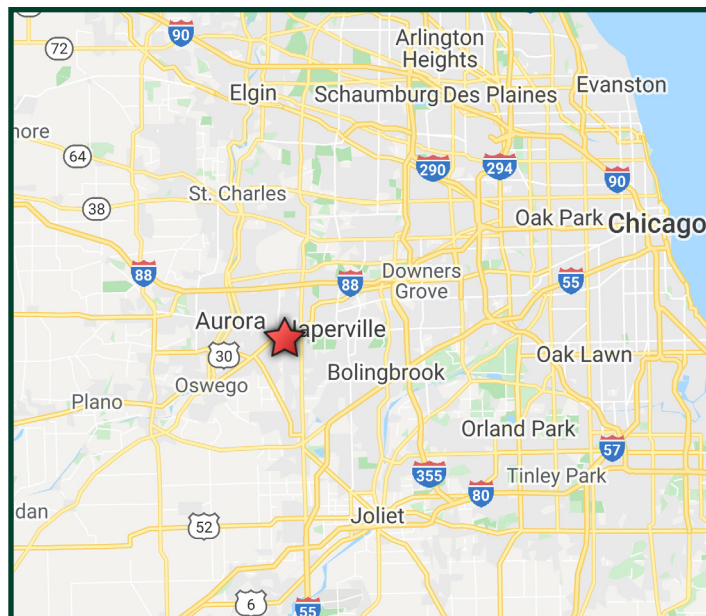


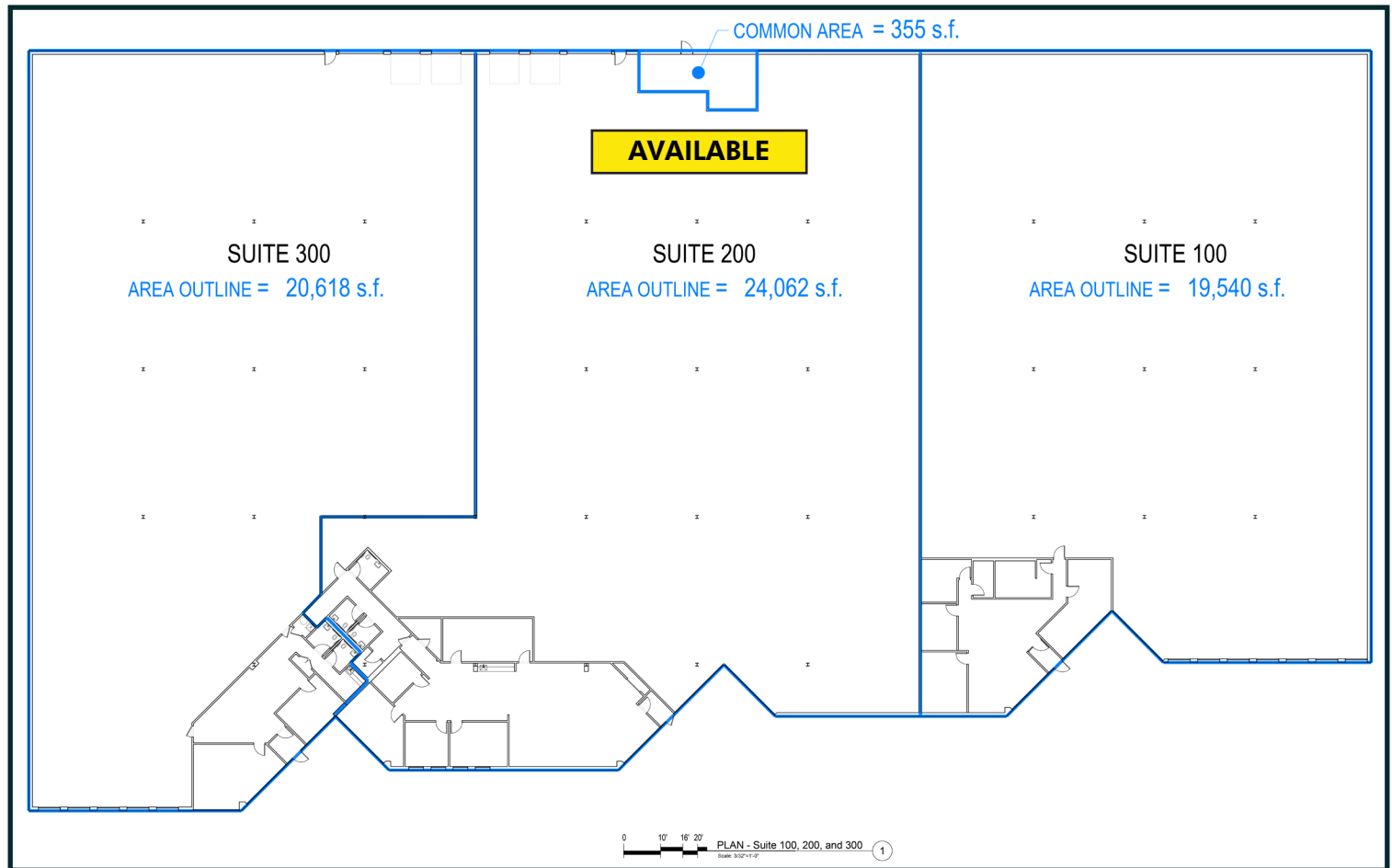
HIGHLIGHTS

- + Well maintained building with flexibility for distribution or manufacturing
- + Newer Roof (2019)
- + Located in Prestigious Meadow Lake Corporate Center
- + Low DuPage County Real Estate Taxes
- + Convenient Access to I-88 by Route 59 or Eola Road Interchange

SPECIFICATIONS

| | |
|---------------------|-------------------------|
| RBA | 64,220 SF |
| Available For Lease | 24,062 SF |
| Office | ±2,960 SF |
| Docks | 2 |
| DID | 1 |
| Clear Height | 21' |
| Power | 800a/480v or 1600a/240v |
| Parking | 30 |
| Construction | Precast |
| Year Built | 1989 |
| Taxes | \$1.67 |
| CAM | \$1.71 |
| Lease Rate | STO |
| Sale Price | STO |





Contact Us

John Hamilton

Senior Vice President
+1 847 706 4909
john.hamilton@cbre.com

Ted Gates

Senior Vice President
+1 773 318 0018
ted.gates@cbre.com

© 2025 CBRE, Inc. All rights reserved. This information has been obtained from sources believed reliable, but has not been verified for accuracy or completeness. You should conduct a careful, independent investigation of the property and verify all information. Any reliance on this information is solely at your own risk. CBRE and the CBRE logo are service marks of CBRE, Inc. All other marks displayed on this document are the property of their respective owners, and the use of such logos does not imply any affiliation with or endorsement of CBRE. Photos herein are the property of their respective owners. Use of these images without the express written consent of the owner is prohibited.