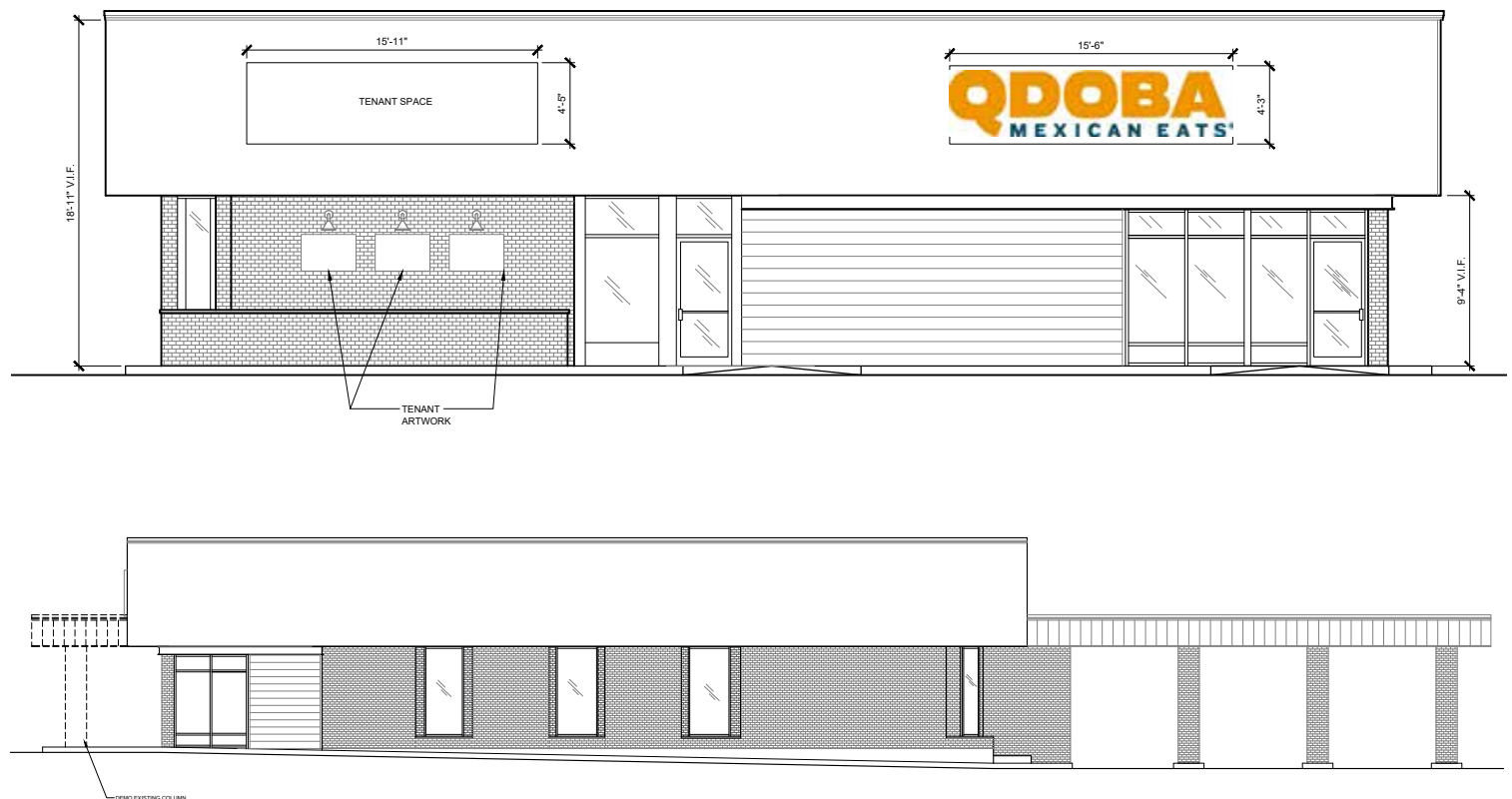


# Endcap Space With Drive-Thru

2,590 SF Available

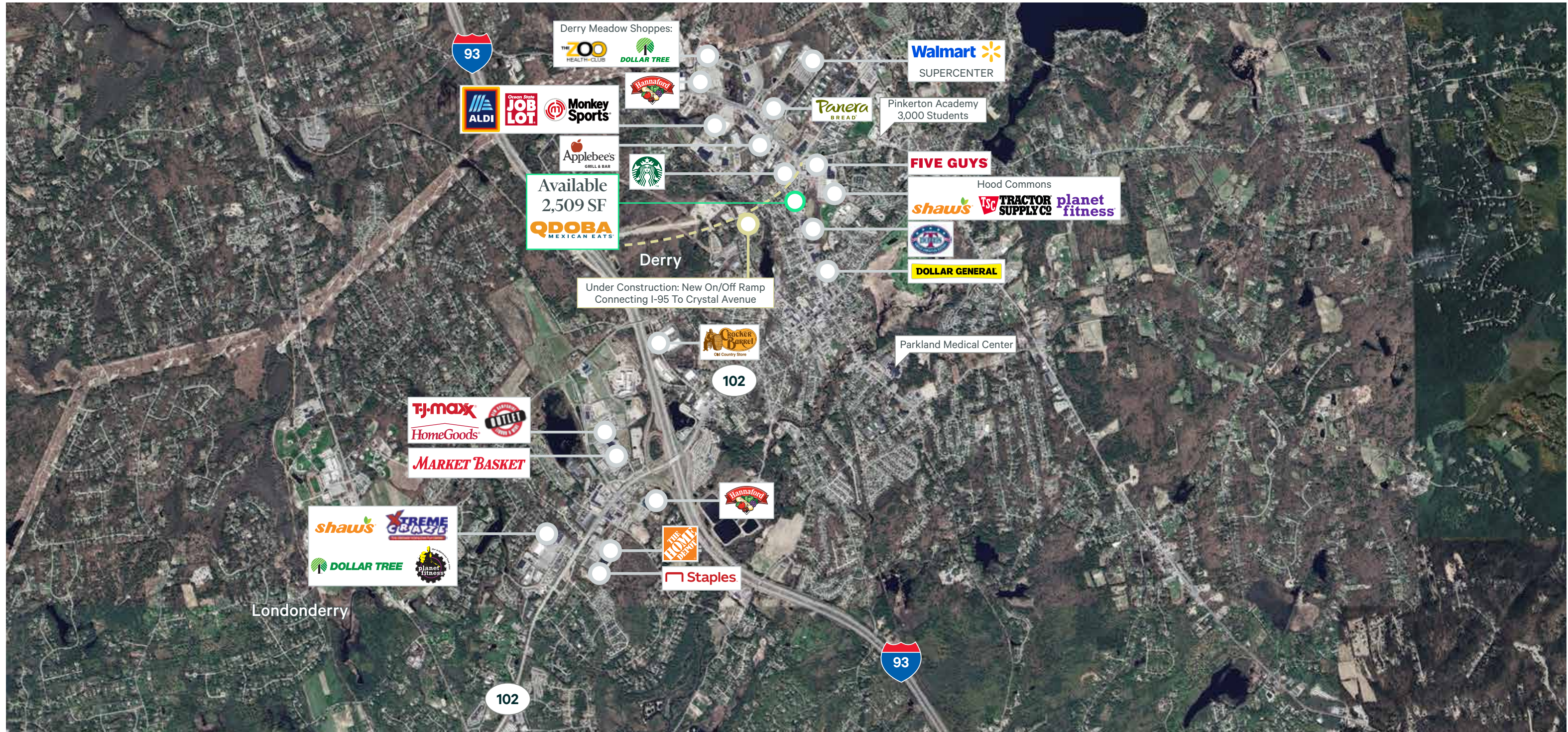
57 Crystal Avenue  
Derry, New Hampshire



## Features

- + Join Qdoba on a pad site shadow-anchored by Hood Commons
- + 2,509 SF endcap space with drive-thru potential
- + Fully accessible from Crystal Avenue via the Hood Commons entrance
- + Strong retail corridor with national tenants including Walmart, Shaw's, Aldi, Hannaford, Job Lot, Five Guys, Panera, Applebee's and more.
- + New on/off ramp connecting Interstate 93 to Crystal Avenue is under construction and will provide improved accessibility and traffic patterns.

Retail Market



2024 Demographics	1 Mile	3 Miles	5 Miles	7 Miles
Estimated Population	9,101	32,164	60,224	99,184
Estimated Households	4,257	13,625	23,745	38,303
Estimated Average Household Income	\$99,890	\$122,942	\$149,940	\$158,114
Estimated Daytime Population	11,138	29,496	50,221	91,703



## Contact Us

**Ryan Minihan**  
First Vice President  
+1 617 912 6859  
ryan.minihan@cbre.com

**Josh Kulak**  
Senior Associate  
+1 617 912 6835  
josh.kulak@cbre.com

© 2025 CBRE, Inc. All rights reserved. This information has been obtained from sources believed reliable, but has not been verified for accuracy or completeness. You should conduct a careful, independent investigation of the property and verify all information. Any reliance on this information is solely at your own risk. CBRE and the CBRE logo are service marks of CBRE, Inc. All other marks displayed on this document are the property of their respective owners, and the use of such logos does not imply any affiliation with or endorsement of CBRE. Photos herein are the property of their respective owners. Use of these images without the express written consent of the owner is prohibited.