

INVESTMENT PROPERTY FOR SALE OR LEASE



HIGHLAND PROFESSIONAL CENTER

STEVE KOZAK

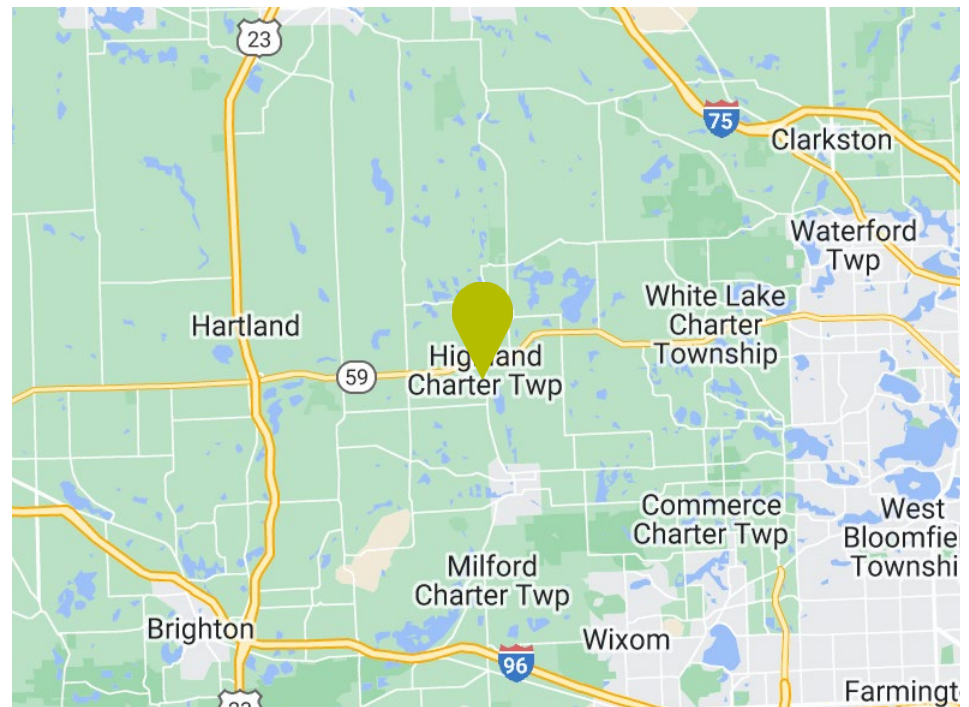
Director
steve.kozak@cushwake.com
+1 248 358 6107

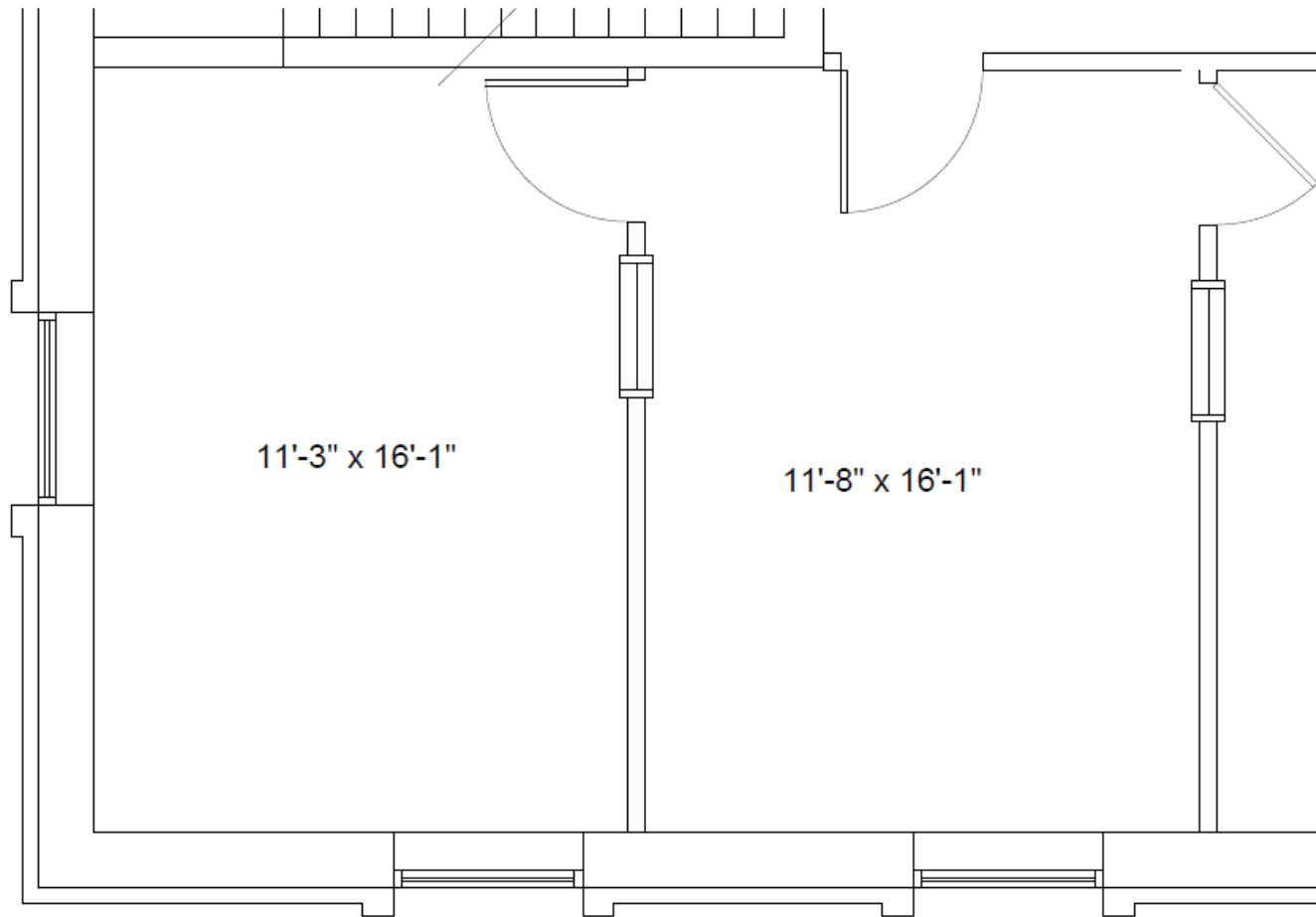
1050 S. Milford Road
Highland, MI 48357



PROPERTY HIGHLIGHTS

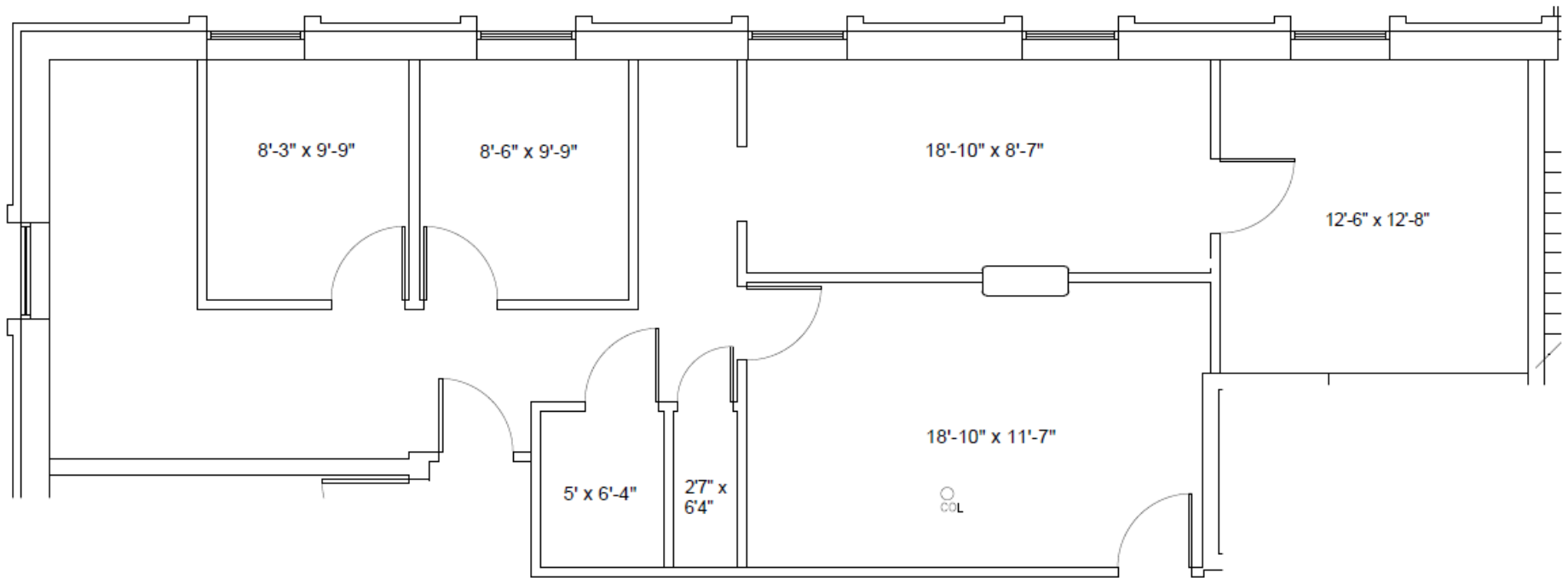
- Building Size: 8,800 SF / 217-1,065 SF available
- Sale Price: \$595,000
- Rental Income: \$80,000
- Lease Term: Negotiable
- Lease Rate: Aggressive lease rates
- One large conference room available
- Parking lot on-site with 45 surface spaces
- Close proximity to M-59 / Near Downtown Milford and GM Proving Grounds





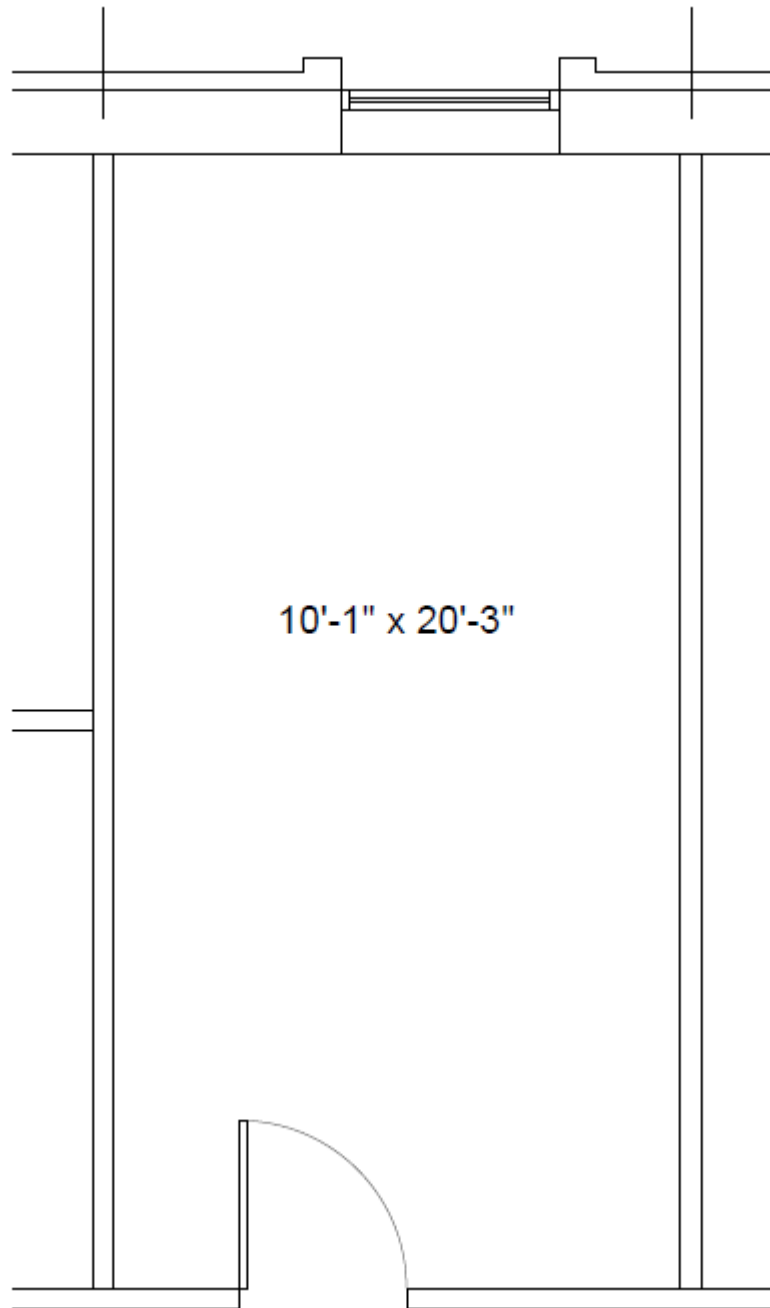
**FLOOR PLAN
SUITE 103**

394 SF



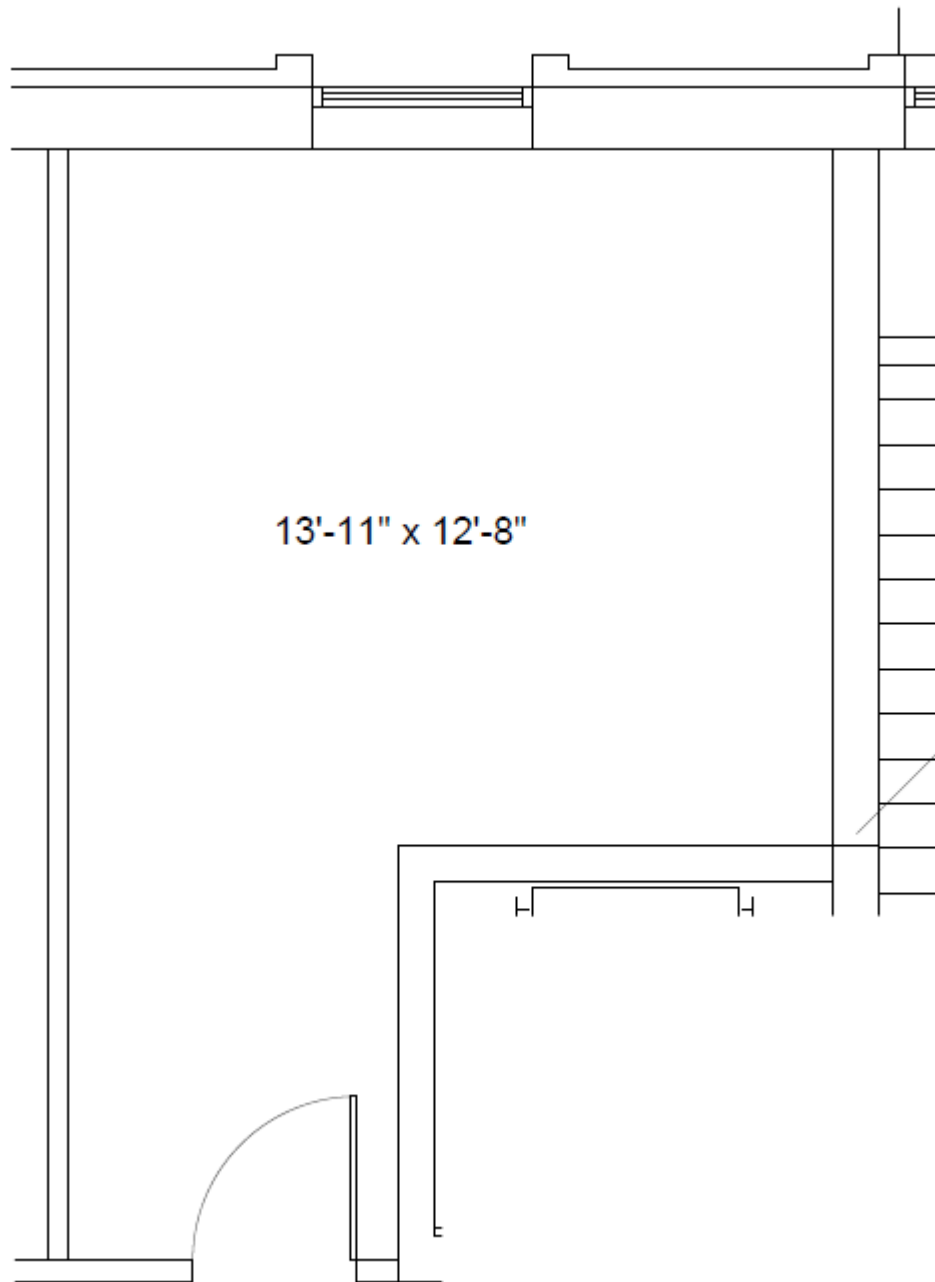
FLOOR PLAN SUITE 105

1,065 SF



**FLOOR PLAN
SUITE 204**

217 SF



**FLOOR PLAN
SUITE 205**

232 SF

A DRIVING WORKFORCE



46,893
POPULATION
Within 5 Miles



\$115,736
AVG. INCOME
Within 5 Miles



\$302,165
AVG. HOMEVALUE
Within 5 Miles



15,327
**DAYTIME
EMPLOYMENT**
Within 5 Miles

200,540
POPULATION
Within 10 Miles

\$111,896
AVG. INCOME
Within 10 Miles

\$290,394
AVG. HOMEVALUE
Within 10 Miles

65,939
**DAYTIME
EMPLOYMENT**
Within 10 Miles

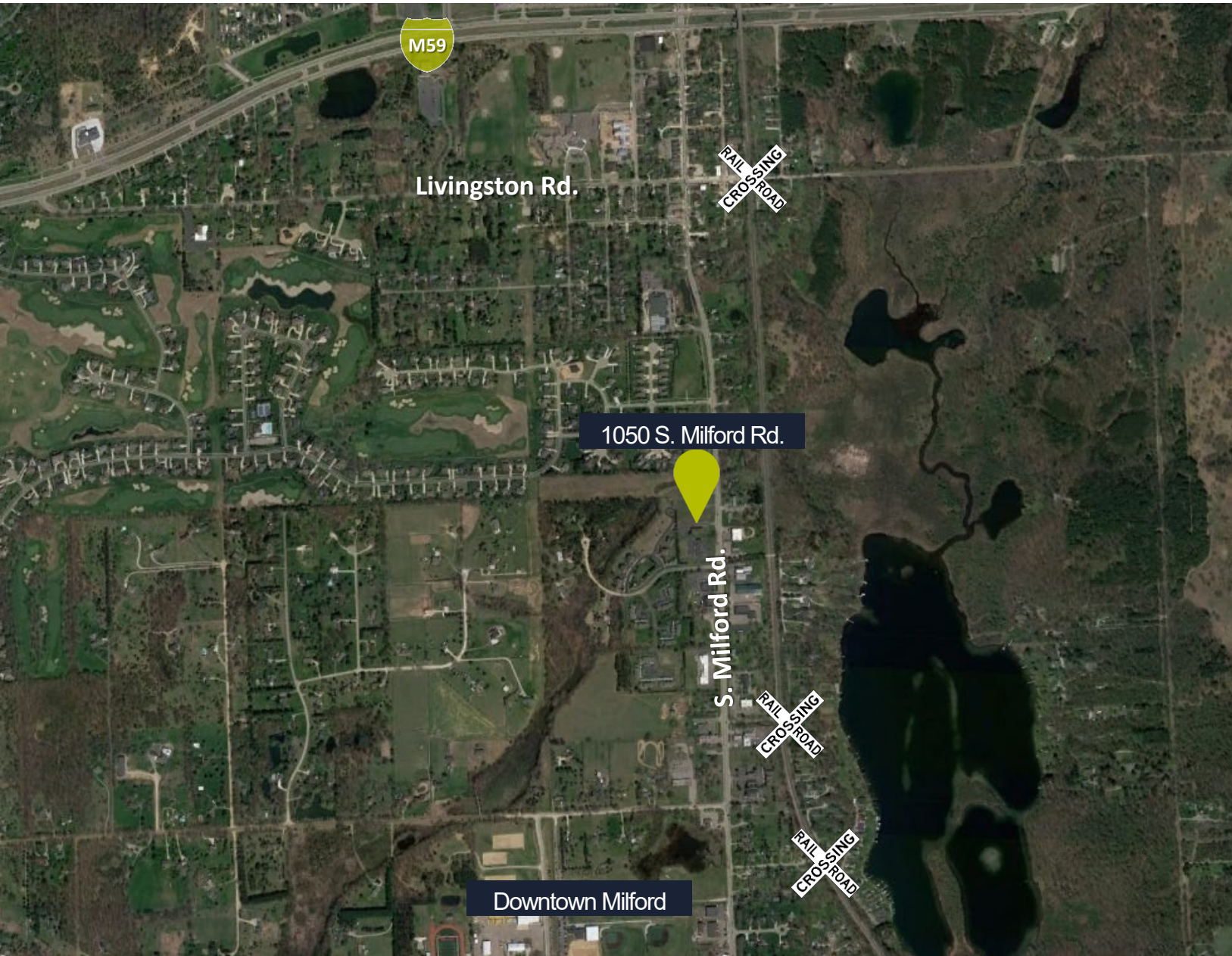
11 MILES
TO INTERSTATE 96

1.2 MILES
TO M-59

2 MILES
TO DOWNTOWN
MILFORD

5.9 MILES
TO GM PROVING
GROUNDS

8 MILES
TO US 23





CONTACT INFORMATION

STEVE KOZAK

Director

steve.kozak@cushwake.com

+1 248 358 6107

