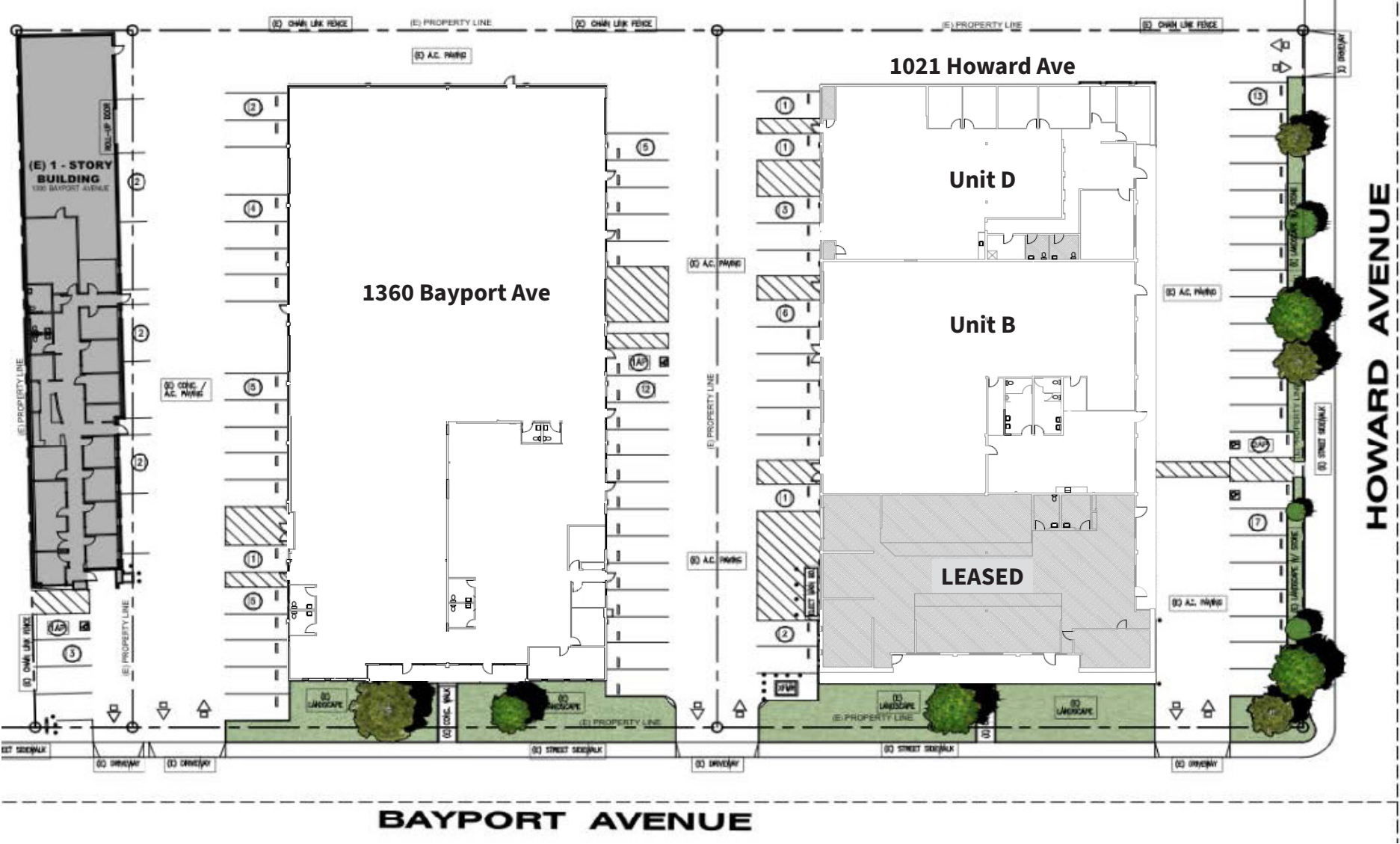




For lease

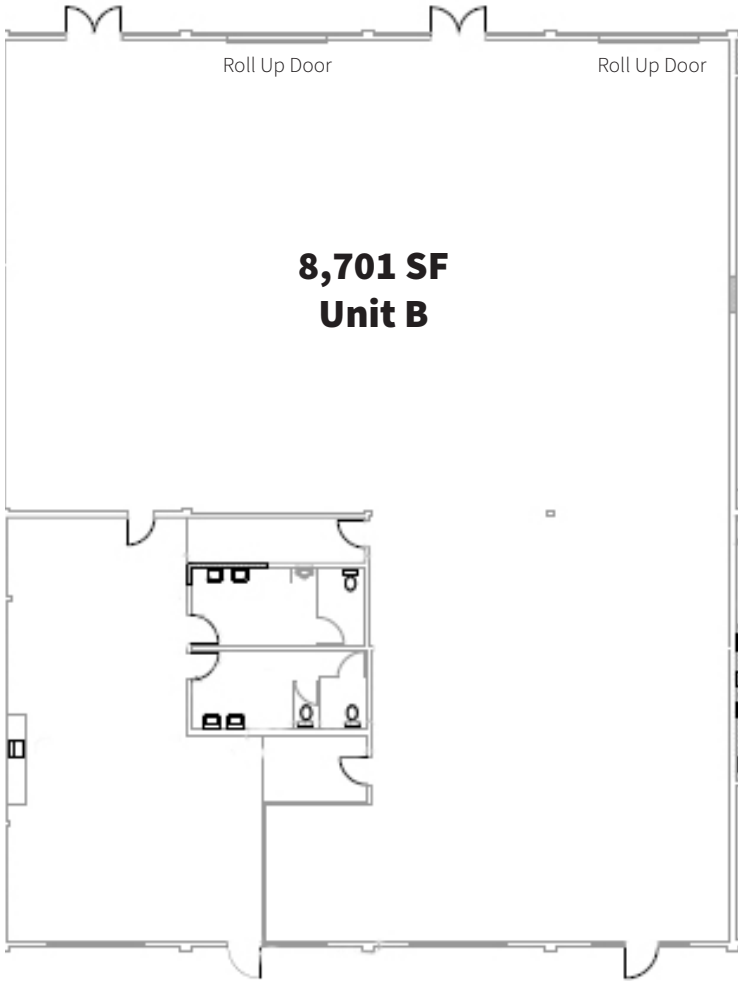
1021 Howard & 1350 & 1390 Bayport Avenue,
San Carlos



1021 Howard Ave, Unit B

Amenities

- 8,701 SF of Professional Office with Lab / R&D space coming soon.
- Can be combined with Unit D for 15,217 SF
- Exterior & Interior Work Underway
- 37 On-site Parking Spaces
- 2 Conference Rooms
- 2 Roll-up Doors
- Breakroom with Kitchenette
- Natural Light Throughout
- Power: 2,000 AMPS @ 120/208 Volt



Term
Flexible



Rate
\$2.95 NNN



Square footage
8,701 SF



Availability
Now

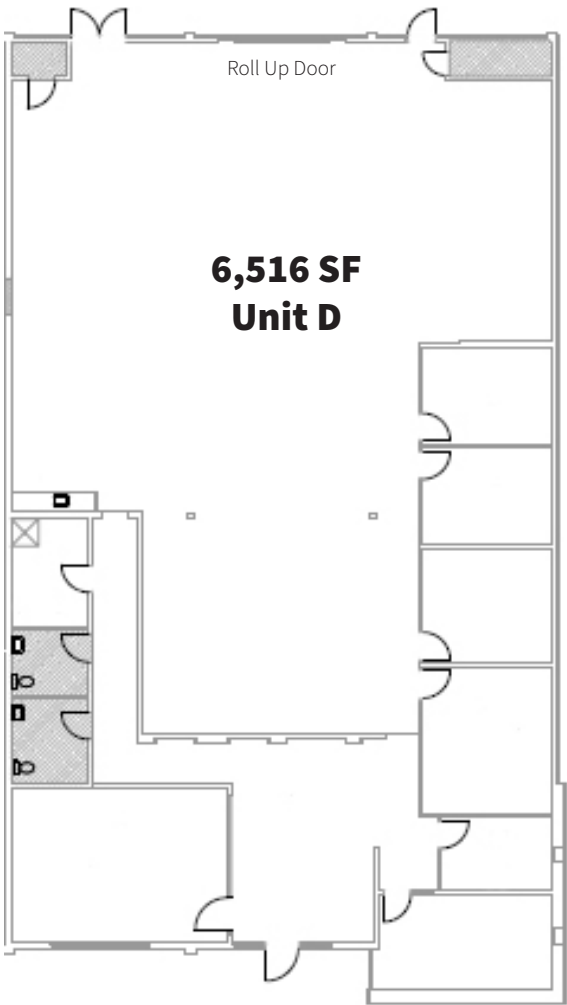


Listing type
Direct

1021 Howard Ave, Unit D

Amenities

- 6,516 SF of Professional Office with Lab / R&D space coming soon.
- Can be combined with Unit B for 15,217 SF
- Exterior & Interior Work Underway
- 37 On-site Parking Spaces
- 2 Conference Rooms
- 1 Roll-up Door
- Breakroom with Kitchenette
- Natural Light Throughout
- Power: 2,000 AMPS @ 120/208 Volt



Term

Flexible



Rate

\$2.95 NNN



Square footage

6,516 SF



Availability

Now



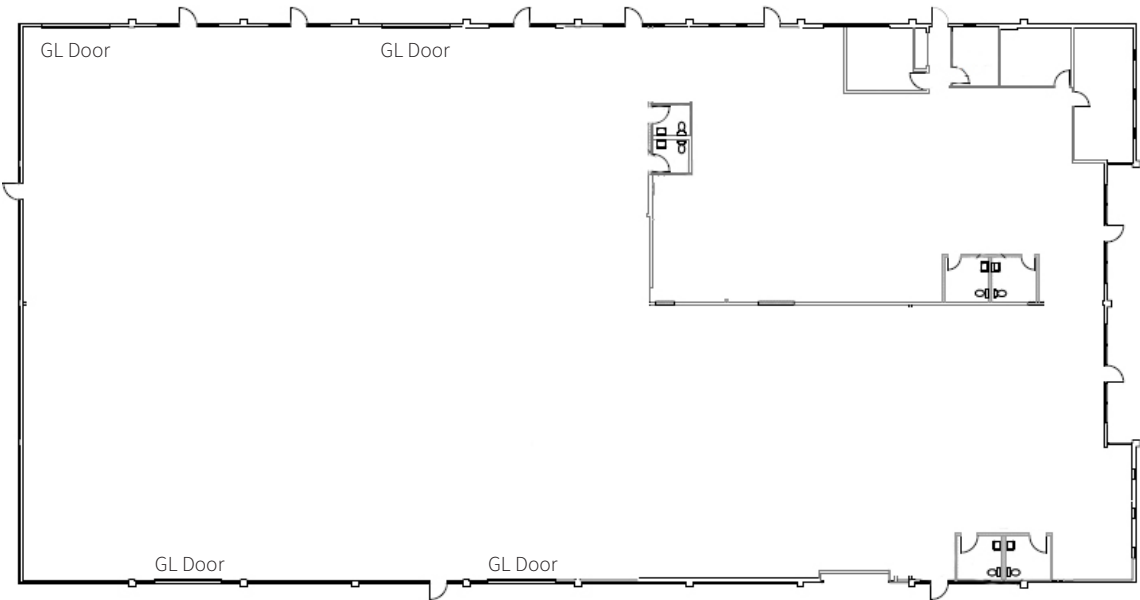
Listing type

Direct

1360 Bayport Ave

Amenities

- 20,498 SF of Professional Office with Lab / R&D space coming soon
- Exterior & Interior Work Underway
- 35 On-site Parking Spaces
- 4 Glass Roll-up Doors in Large R&D Area
- 3 Private Offices
- Breakroom with Kitchenette
- Open Office Areas
- Natural Light Throughout
- Power: 800 AMPS @ 120/208 Volts
- Can demise down to 10,249 SF



Term

Flexible



Rate

\$2.95 NNN



Square footage

20,498 SF



Availability

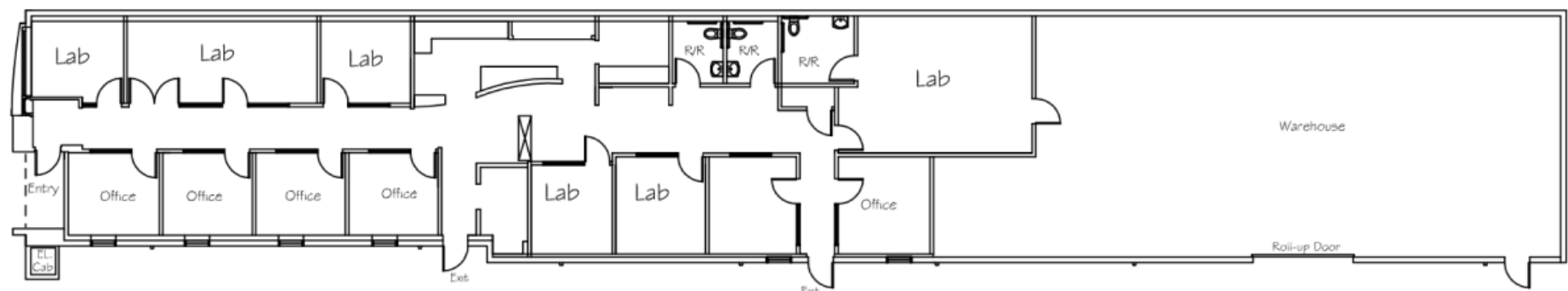
Now



Listing type

Direct

1390 Bayport Ave



Amenities

- 5,451 SF of Professional Office with Lab / R&D space available
- Tenant Improvements and reconfiguration / demo possible
- Good breakdown of office and open R&D
- 5 Private Offices
- 6 Lab Spaces
- Warehouse with 1 Roll-up door
- Power: 600 Amps @120/208 Volts



Term
Flexible



Rate
\$2.95 NNN



Square footage
5,451 SF

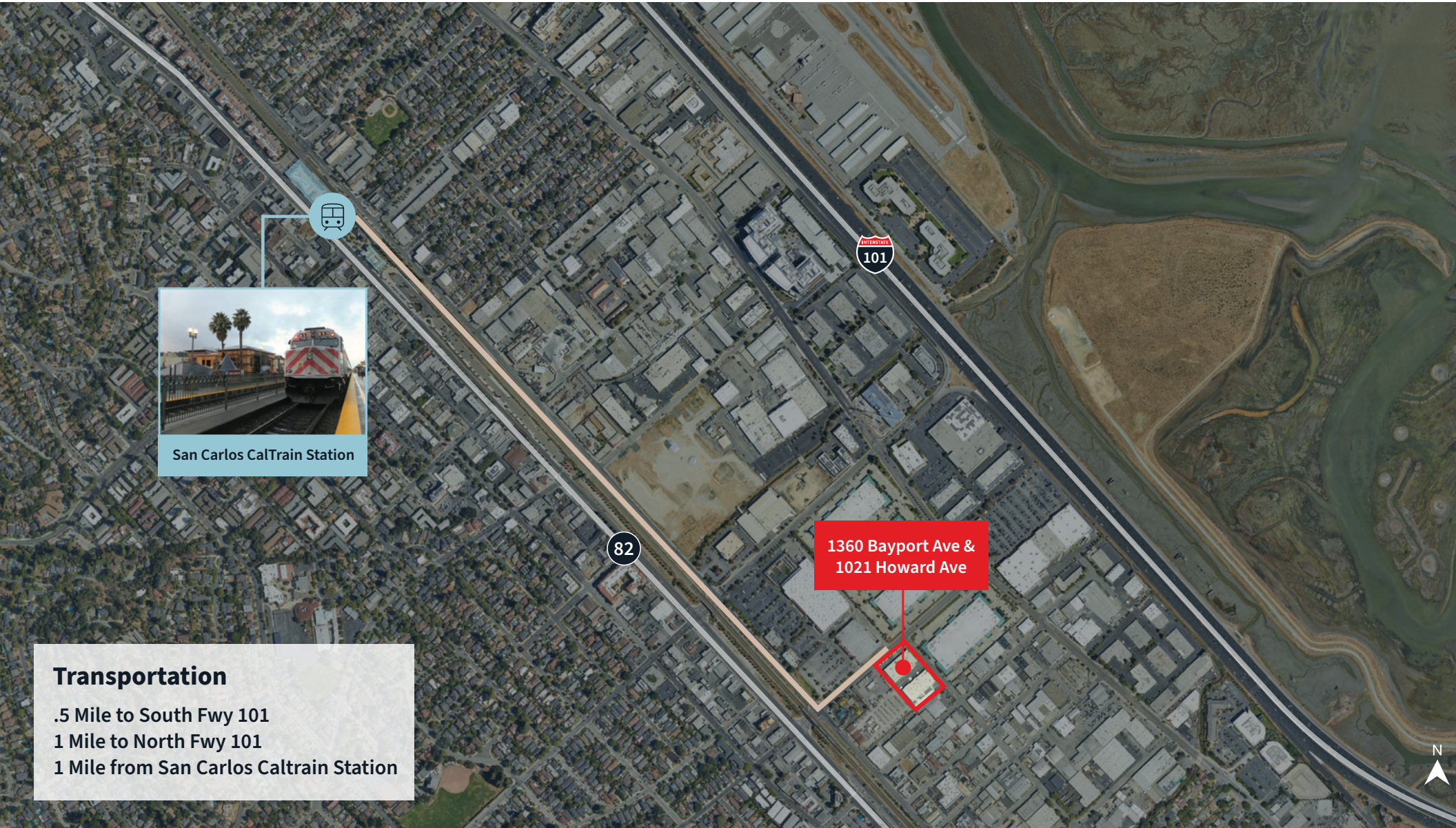


Availability
Now



Listing type
Direct

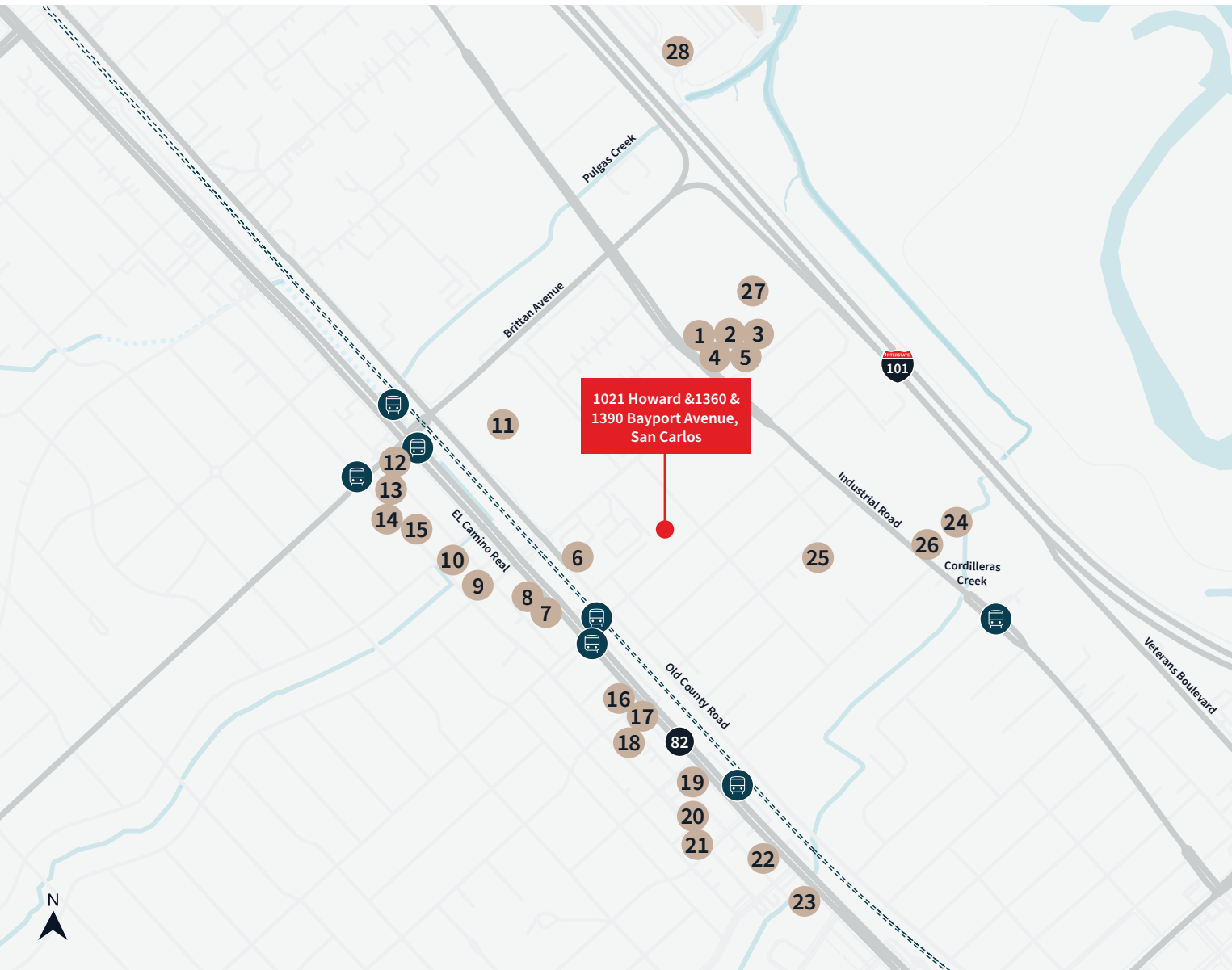
Transportation



San Carlos CalTrain Station

Transportation
.5 Mile to South Fwy 101
1 Mile to North Fwy 101
1 Mile from San Carlos Caltrain Station

Amenities



Amenities

1. Falafel Tazah San Carlos
2. Chipotle Mexican Grill
3. Starbucks
4. Wingstop
5. Jamba
6. El Jarochito Truck
7. New York Pizza, Pasta & more
8. Round Table Pizza
9. The Sandwich Spot
10. Sushi Kazoku
11. Kelly's Deli
12. Jack in the Box
13. My Breakfast House
14. New Canton Restaurant
15. Pazzo
16. iGuey Taqueria
17. Mints & Honey
18. Hot Wok Bistro Too
19. Mediterranean Delite
20. The Toss I San Carlos
21. Johnston's Saltbox
22. The Office
23. Carl's Jr.
24. Bacchus Wine Making Club
25. Flying Suitcase Wines
26. Domenico Winery
27. Tesla Supercharger
28. San Carlos Airport



JLL

Joey Alftin

Lic. 02086817

joey.alftin@jll.com

650-520-0324

Matt Winters

Lic. 01405284

matt.winters@jll.com

650-248-7797

Beto Santana Ruiz

Lic. 02222480

beto.santana@jll.com

385-250-7852

Nestled in the vibrant heart of San Carlos, the San Carlos Tech Center offers the perfect blend of convenience and inspiration. With easy access to major highways, public transportation, and the dynamic Silicon Valley ecosystem, your creative journey is set for success. This upcoming facility will include 1021 Howard Avenue, 1350 & 1390 Bayport Avenue offering over 45,000 SF of space, and promises to be a beacon for innovation, where research and life sciences converge to redefine what's possible. San Carlos Tech Center, is poised to become a technology hub, offering state-of-the-art laboratories, collaborative zones, and access to pioneering research.