

HARTMAN LAKES

An Aging-in-Place Community

Shiloh, Illinois



WP WITTENAUER
PROPERTIES®

1177 N. Green Mount Rd, Suite 201, O'Fallon, IL 62269
Office: 618.632.5850 | Fax: 618.632.3270
Email: info@wittenauerproperties.com
www.wittenauerproperties.com

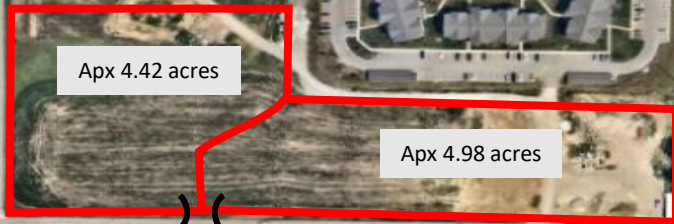
The information contained herein has been given to us by the owner of the property or other sources that we deem reliable. We have no reason to doubt its accuracy, but we do not guarantee it. All information should be verified prior to lease or purchase.

HARTMAN LAKES

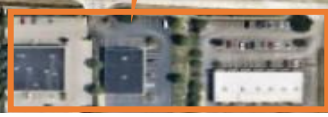
An Aging-in-Place Community - Shiloh, Illinois



Hartman Lane – 11,300 VPD

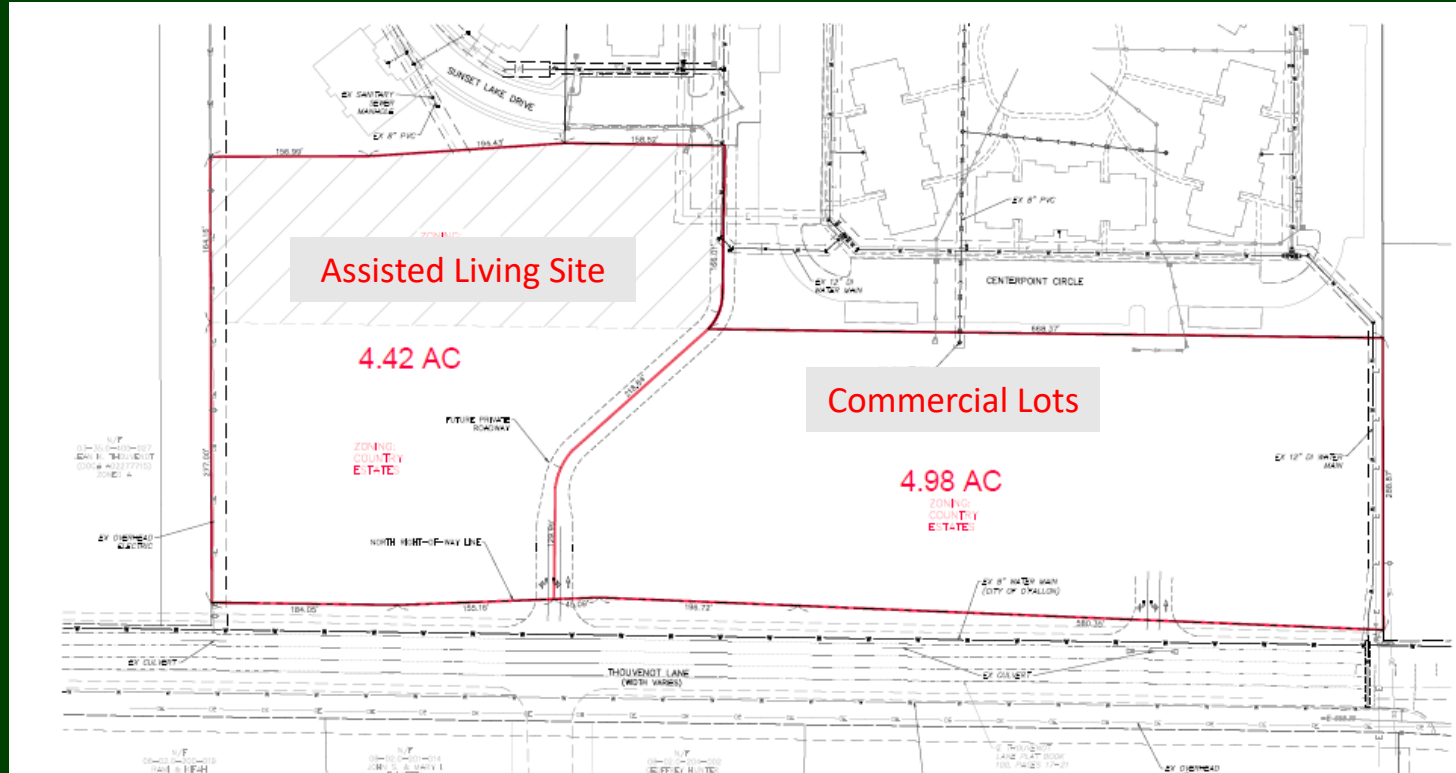


Frank Scott Parkway – 17,800 VPD



HARTMAN LAKES - Phase 3

Shiloh Illinois



TWO LOTS AVAILABLE FOR SALE

WP WITTENAUER
PROPERTIES®

1177 N. Green Mount Rd, Suite 201, O'Fallon, IL 62269
Office: 618.632.5850 | Fax: 618.632.3270
Email: info@wittenauerproperties.com
www.wittenauerproperties.com

The information contained herein has been given to us by the owner of the property or other sources that we deem reliable. We have no reason to doubt its accuracy, but we do not guarantee it. All information should be verified prior to lease or purchase.

REGIONAL TRADE AREA



HARTMAN LAKES – Phase 3

Shiloh Illinois

PROPERTY OVERVIEW

- Prime Commercial Development Site - Will Divide
- Easy access to over 503 New Luxury Villa's and Apartments
- Located along side Thirteen01 at Hartman Lakes (288 Apartments)
- The Oasis Independent Living (55+) 116 Luxury One- & Two-Bedroom Units (Opening 2024)
- The Villas at Hartman Lakes (55+) 99 Free-Standing 2 Bedroom Units
- Expanding corridor in a high growth area
- High Visibility and Traffic Area
- Utilities at Site
- Off-Site Detention Provided

IDEALLY LOCATED

- 2.5 miles to BJC and HSHS recently built hospitals
- Close to dining, shopping, recreation and entertainment
- 20 minutes to Downtown St. Louis
- 10 minutes to Belleville and Fairview Heights
- 15 minutes to Scott Air Force Base

O'FALLON & SHILOH OVERVIEW

The O'Fallon/Shiloh area is a diverse, charming community of hardworking residents, including personnel from nearby Scott Air Force Base, medical professionals from HSHS St. Elizabeth's Hospital (144 beds) and BJC's Memorial Hospital (94 beds). Over 45,000 people call O'Fallon/Shiloh "home", and each contributes a wonderful mix of small-town caring and community pride.

The area boasts a rich history of trade and industry, and its solid foundation for continued growth and prosperity make it one of Southern Illinois most popular destinations in which to live and work. Today, O'Fallon/Shiloh is known as one of the fastest growing communities in the Metropolitan St. Louis area.

PRICE

4.42 acres Assisted Living Site

Price : \$1,347,750 (\$7.0 p/s/f)

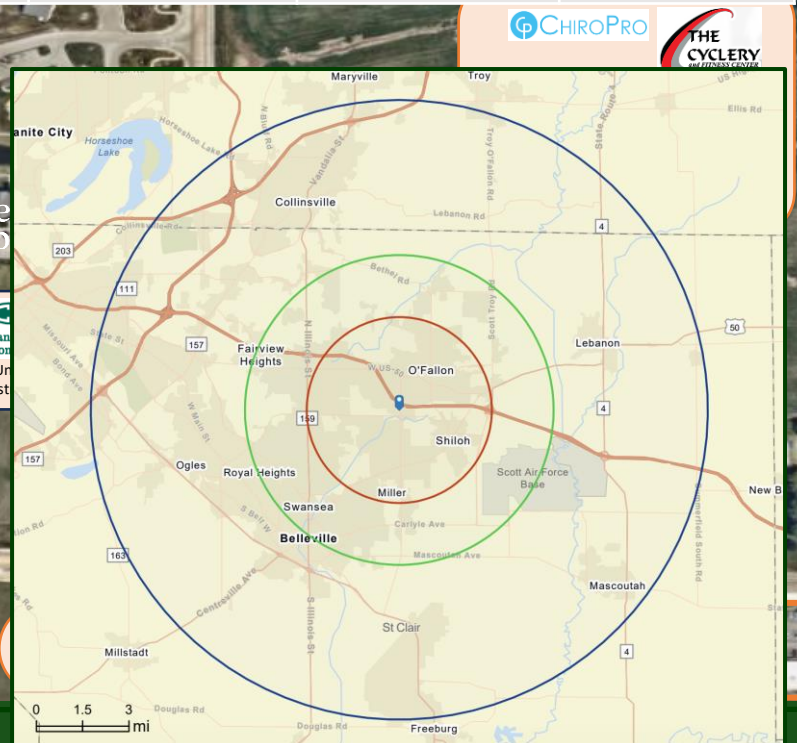
4.98 acres Commercial Lots

Price : \$1,735,424 (\$8.0 p/s/f)

MARKET DEMOGRAPHICS



ESRI DEMOS	3 MILES	5 MILES	10 MILES
POPULATION	51,286	119,544	236,526
HOUSEHOLDS	20,795	48,614	93,382
MEDIAN AGE	37.4	37.4	37.1
MEDIAN HHI	\$82,404	\$75,165	\$69,795
AVG HHI	\$111,811	\$101,628	\$95,955
Age 65+	10,296	22,908	43,919





The Villas at Hartman Lakes
99 Free-Standing 2 Bedrooms

Hartman Lakes 55+
Active Living Resort
Communities





Hartman Lakes 55+ Active Living Resort Communities

The Oasis at Hartman Lakes 116 Luxury One- & Two-Bedroom Units





**Subject
Property**

DAVID WITTENAUER

PRESIDENT | DESIGNATED MANAGING BROKER

DAVID@WITTENAUERPROPERTIES.COM

OFFICE: 618.632.5850

DIRECT: 618.622.2349

MOBILE: 618.719.1197