



GOTHARD BUSINESS CENTER PROPERTY FEATURES

- Well Maintained Office Park
- Professionally Managed
- Prominent Huntington Beach Address
- Ample Free Parking Spaces
- 0.5 Mi from Bella Terra Mall
- Competitive Lease Rates
- Centrally Located in Huntington Beach
- **209* - Sublease, Master Lease Expires 1/31/28**

AVAILABLE SUITES

SUITE	SIZE (RSF)	LEASE RATE
203	±1,016	\$1.50 / SF MG
206	±726	\$1.80/ SF MG
207	±1,047	\$1.80 / SF MG
209*	±2,001	\$1.25 / SF MG
211	±810	\$1.80 /SF MG

LOCAL EXPERTISE. INTERNATIONAL REACH. WORLD CLASS.

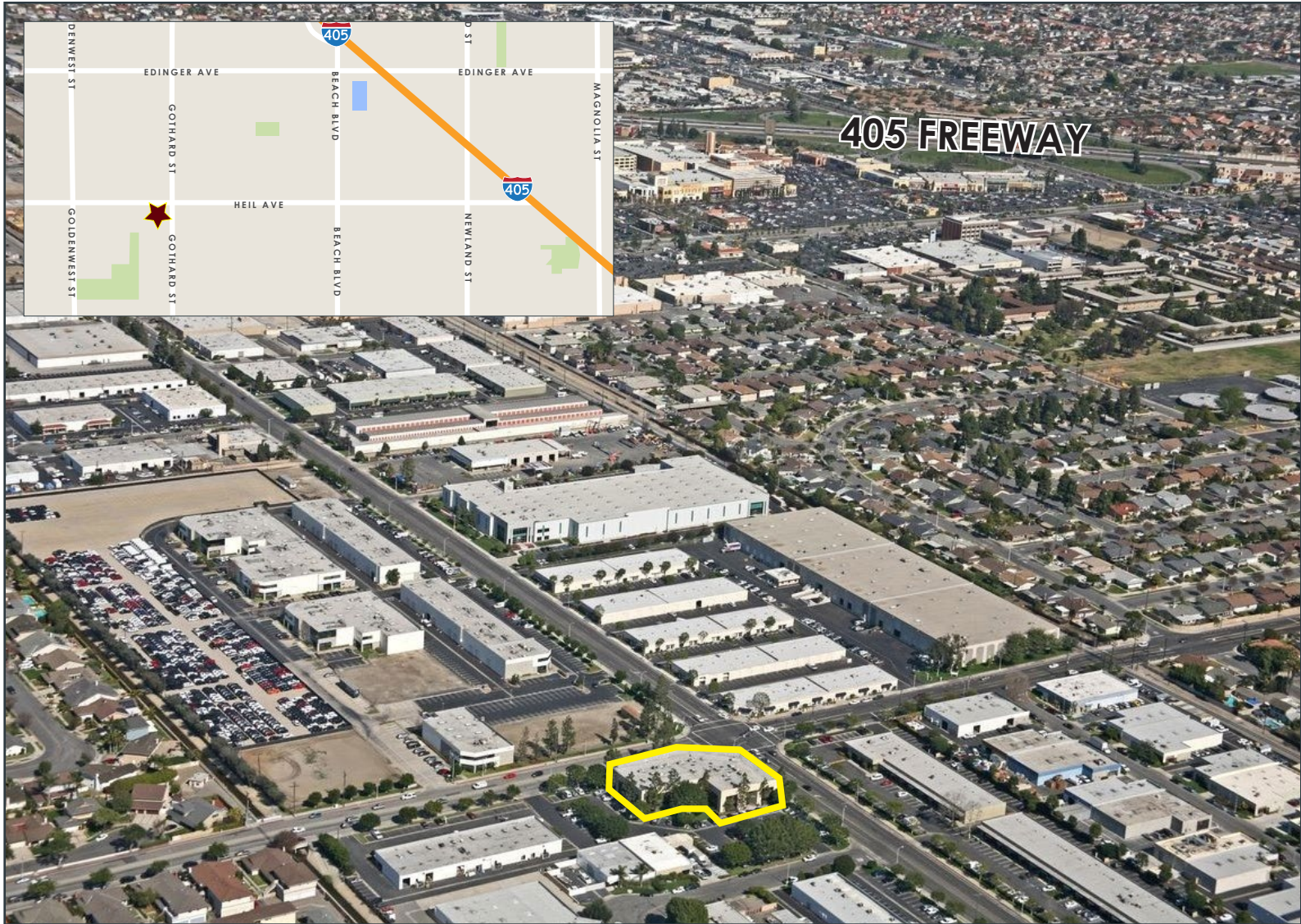


Josh Reilly, MBA
Principal | DRE# 01474368
P: +1(949)525-2720
E: jreilly@leelalb.com

CONNECT WITH US ON OUR SOCIALS!



Copyright © Lee & Associates. All rights reserved. No part of this work may be reproduced or distributed without written permission of the copyright owner. The information contained in this report was gathered by Lee & Associates from sources believed to be reliable. Lee & Associates, however, makes no representation concerning the accuracy or completeness of such information and expressly disclaims any responsibility for any inaccuracy contained herein.



LOCAL EXPERTISE. INTERNATIONAL REACH. WORLD CLASS.



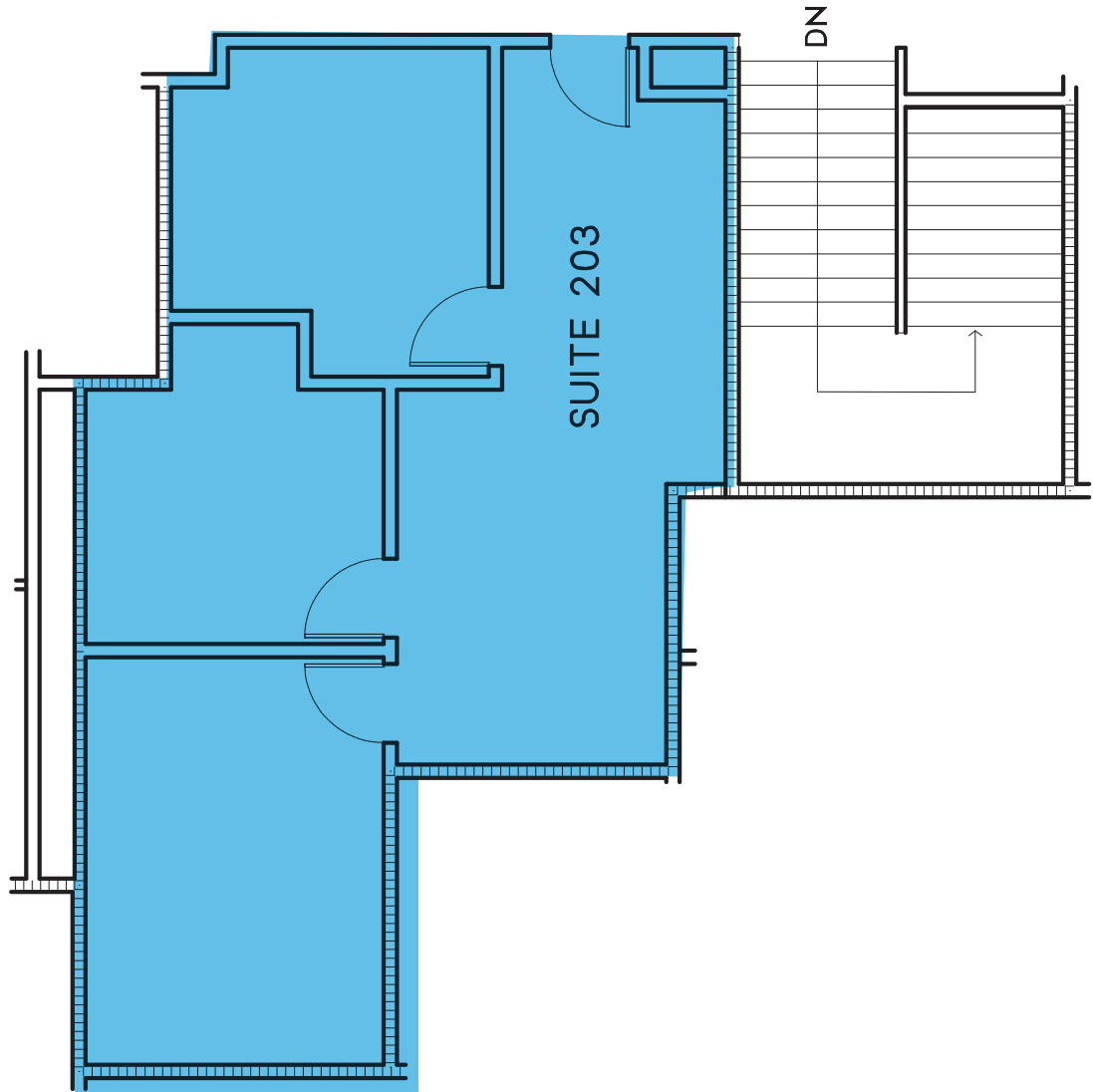
Josh Reilly, MBA
Principal | DRE# 01474368
P: +1(949)525-2720
E: jreilly@leelalb.com

CONNECT WITH US ON OUR SOCIALS!

 www.lee-associates.com
 @leeassociateslab
 @leeassociateslab
  @LeeAssociatesLA

Copyright © Lee & Associates. All rights reserved. No part of this work may be reproduced or distributed without written permission of the copyright owner. The information contained in this report was gathered by Lee & Associates from sources believed to be reliable. Lee & Associates, however, makes no representation concerning the accuracy or completeness of such information and expressly disclaims any responsibility for any inaccuracy contained herein.

FLOOR PLAN SUITE 203 (NOT DRAWN TO SCALE)



LOCAL EXPERTISE. INTERNATIONAL REACH. WORLD CLASS.



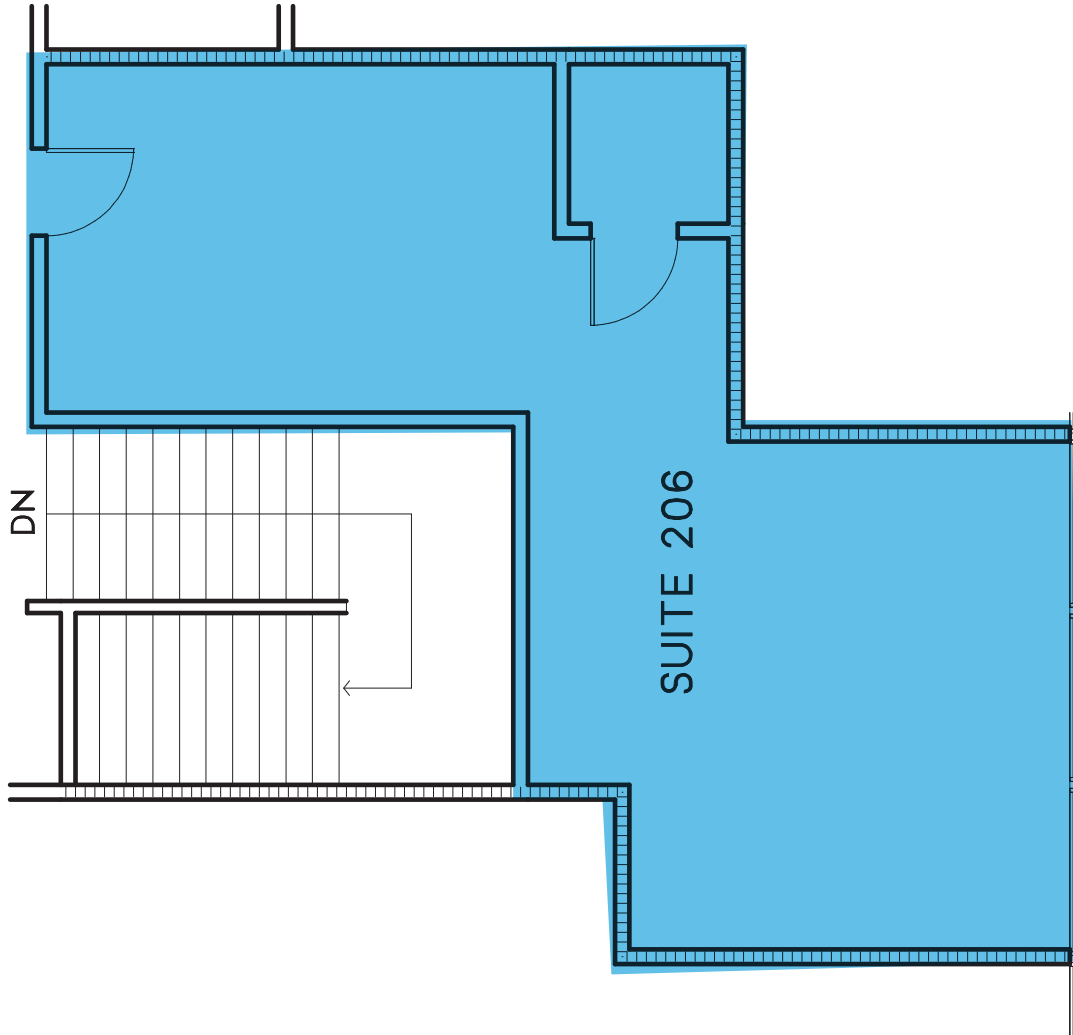
Josh Reilly, MBA
Principal | DRE# 01474368
P: +1(949)525-2720
E: jreilly@leelalb.com

CONNECT WITH US ON OUR SOCIALS!

 www.lee-associates.com  @leeassociateslalb
 @leeassociateslalb  @LeeAssociatesLA

Copyright © Lee & Associates. All rights reserved. No part of this work may be reproduced or distributed without written permission of the copyright owner. The information contained in this report was gathered by Lee & Associates from sources believed to be reliable. Lee & Associates, however, makes no representation concerning the accuracy or completeness of such information and expressly disclaims any responsibility for any inaccuracy contained herein.

FLOOR PLAN SUITE 206 (NOT DRAWN TO SCALE)



LOCAL EXPERTISE. INTERNATIONAL REACH. WORLD CLASS.



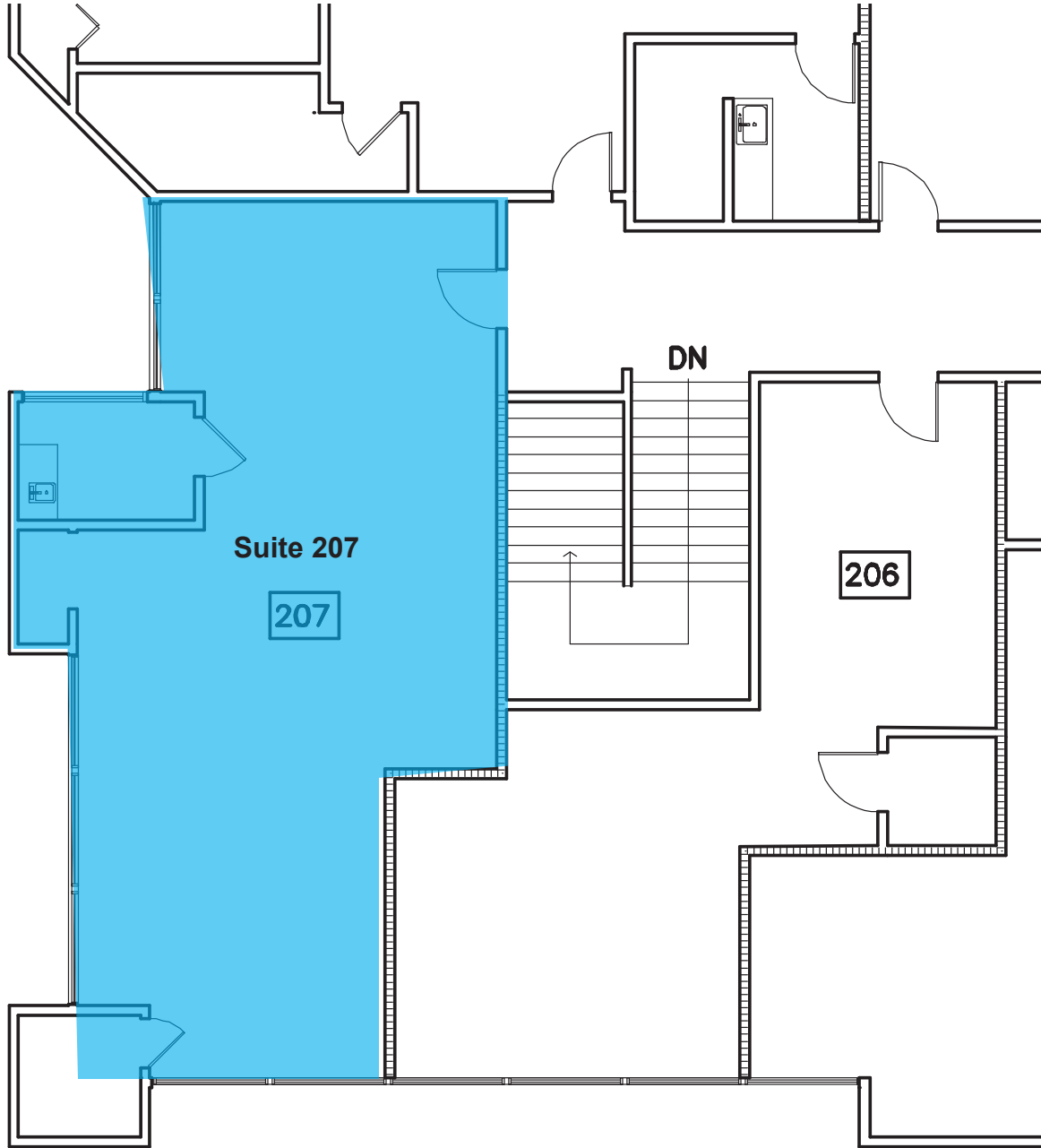
Josh Reilly, MBA
Principal | DRE# 01474368
P: +1(949)525-2720
E: jreilly@leelalb.com

CONNECT WITH US ON OUR SOCIALS!



Copyright © Lee & Associates. All rights reserved. No part of this work may be reproduced or distributed without written permission of the copyright owner. The information contained in this report was gathered by Lee & Associates from sources believed to be reliable. Lee & Associates, however, makes no representation concerning the accuracy or completeness of such information and expressly disclaims any responsibility for any inaccuracy contained herein.

FLOOR PLAN SUITE 207 (NOT DRAWN TO SCALE)



LOCAL EXPERTISE. INTERNATIONAL REACH. WORLD CLASS.



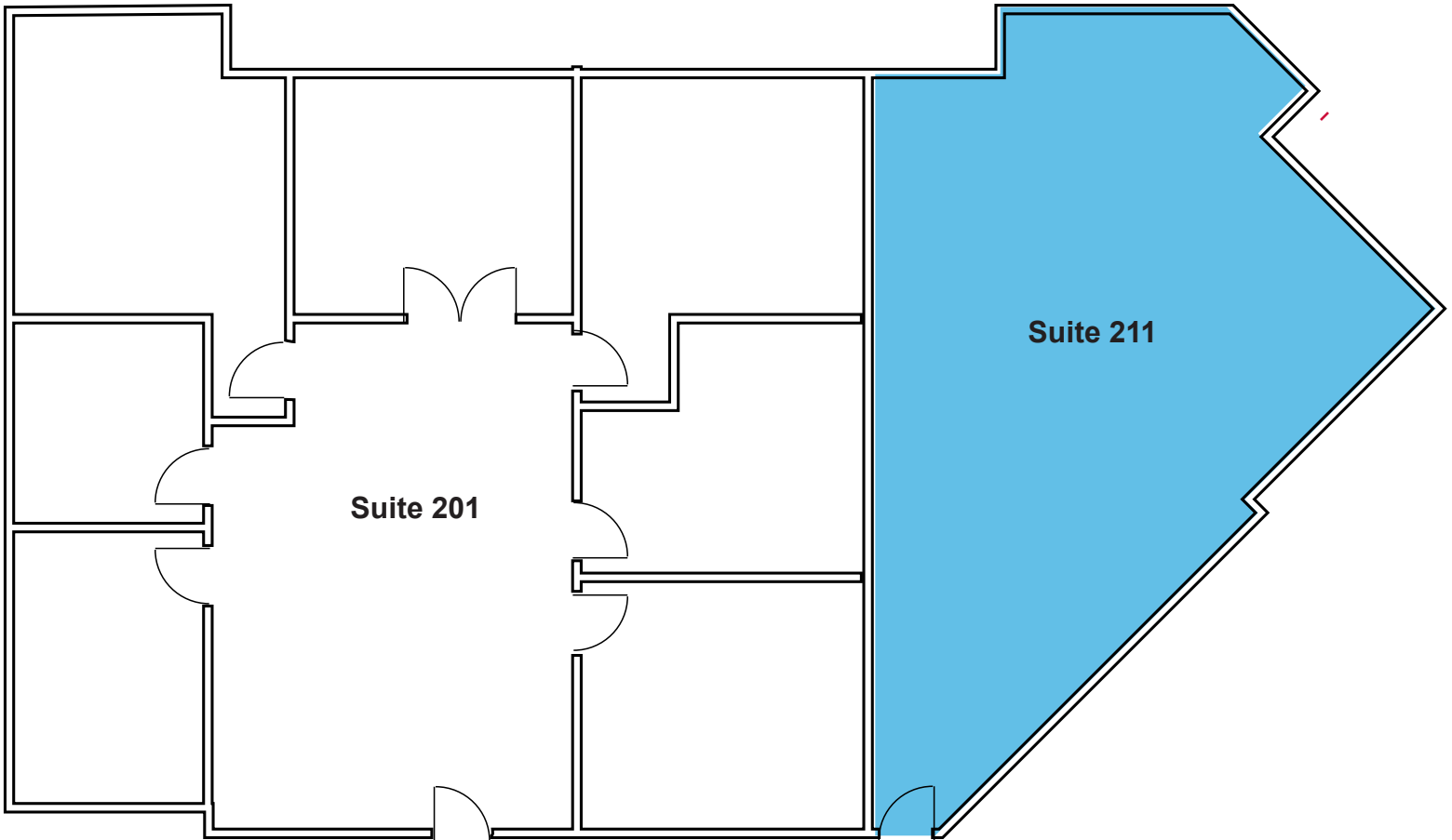
Josh Reilly, MBA
Principal | DRE# 01474368
P: +1(949)525-2720
E: jreilly@leelalb.com

CONNECT WITH US ON OUR SOCIALS!



Copyright © Lee & Associates. All rights reserved. No part of this work may be reproduced or distributed without written permission of the copyright owner. The information contained in this report was gathered by Lee & Associates from sources believed to be reliable. Lee & Associates, however, makes no representation concerning the accuracy or completeness of such information and expressly disclaims any responsibility for any inaccuracy contained herein.

FLOOR PLAN SUITE 211 (NOT DRAWN TO SCALE)



LOCAL EXPERTISE. INTERNATIONAL REACH. WORLD CLASS.



Josh Reilly, MBA
Principal | DRE# 01474368
P: +1(949)525-2720
E: jreilly@leelalb.com

CONNECT WITH US ON OUR SOCIALS!

 www.lee-associates.com  [@leeassociateslhb](https://www.facebook.com/leeassociateslhb)
 [@leeassociateslhb](https://www.instagram.com/leeassociateslhb)  [@LeeAssociatesLA](https://twitter.com/LeeAssociatesLA)

Copyright © Lee & Associates. All rights reserved. No part of this work may be reproduced or distributed without written permission of the copyright owner. The information contained in this report was gathered by Lee & Associates from sources believed to be reliable. Lee & Associates, however, makes no representation concerning the accuracy or completeness of such information and expressly disclaims any responsibility for any inaccuracy contained herein.