

Valley Office Centre

2635 N. First Street, San Jose, CA

For Lease



Reese Stanley

(408)591-6342

(408)354-0300 x106

Reese@stanprop.com



The Stanley Group, Inc.

Project Highlights



5
Minutes



3
Minutes



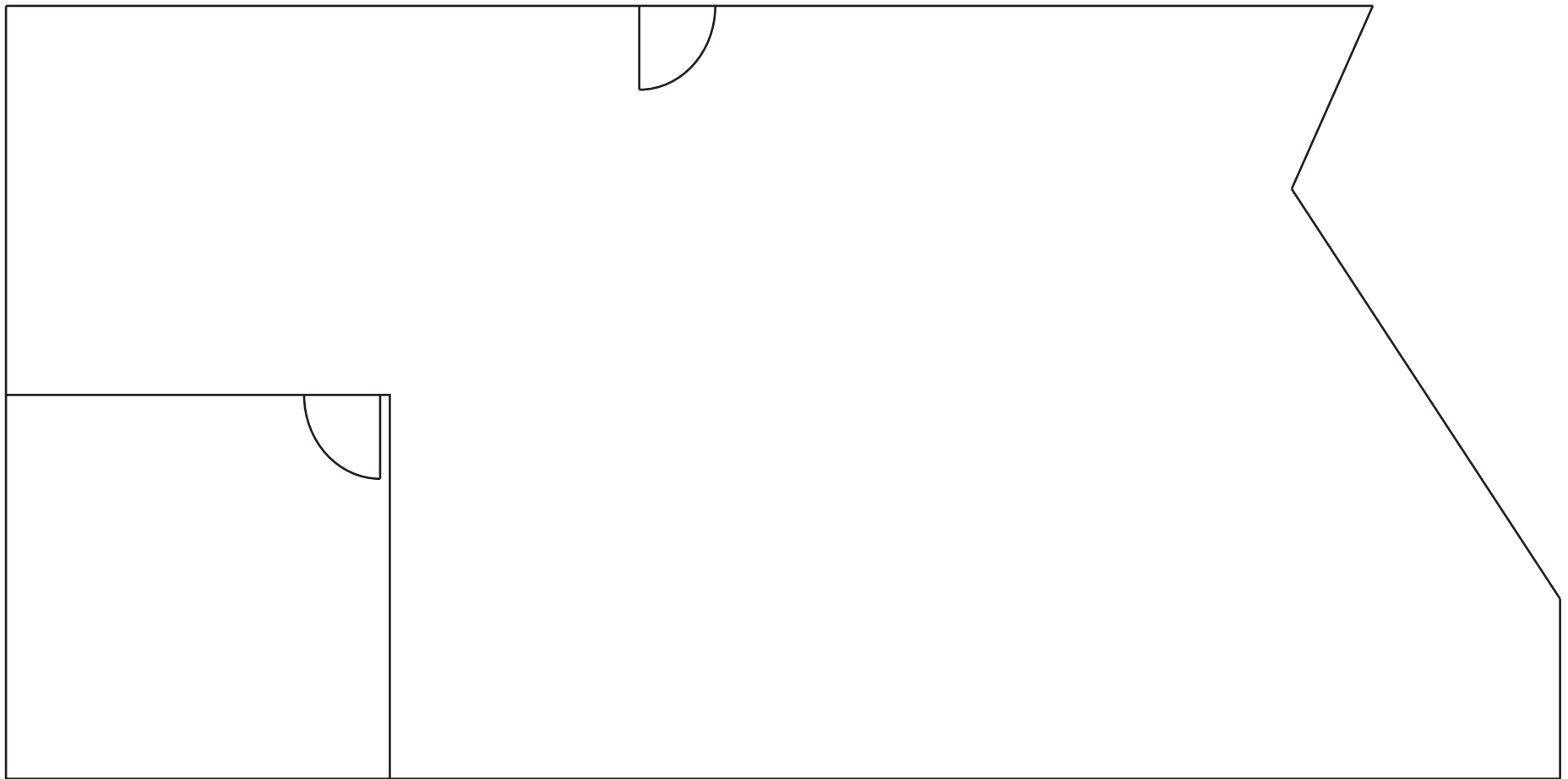
1
Minute

- Located in the “Golden Triangle” between 101, 87, and 880
- Light rail stop directly in front of the building
- Within walking distance of excellent retail and dining
- Lush atrium with new furniture available for all tenants
- Market-ready suites are move in ready
- Abundant free parking on-site
- Business & Enterprise grade fiber available from ATT & Comcast



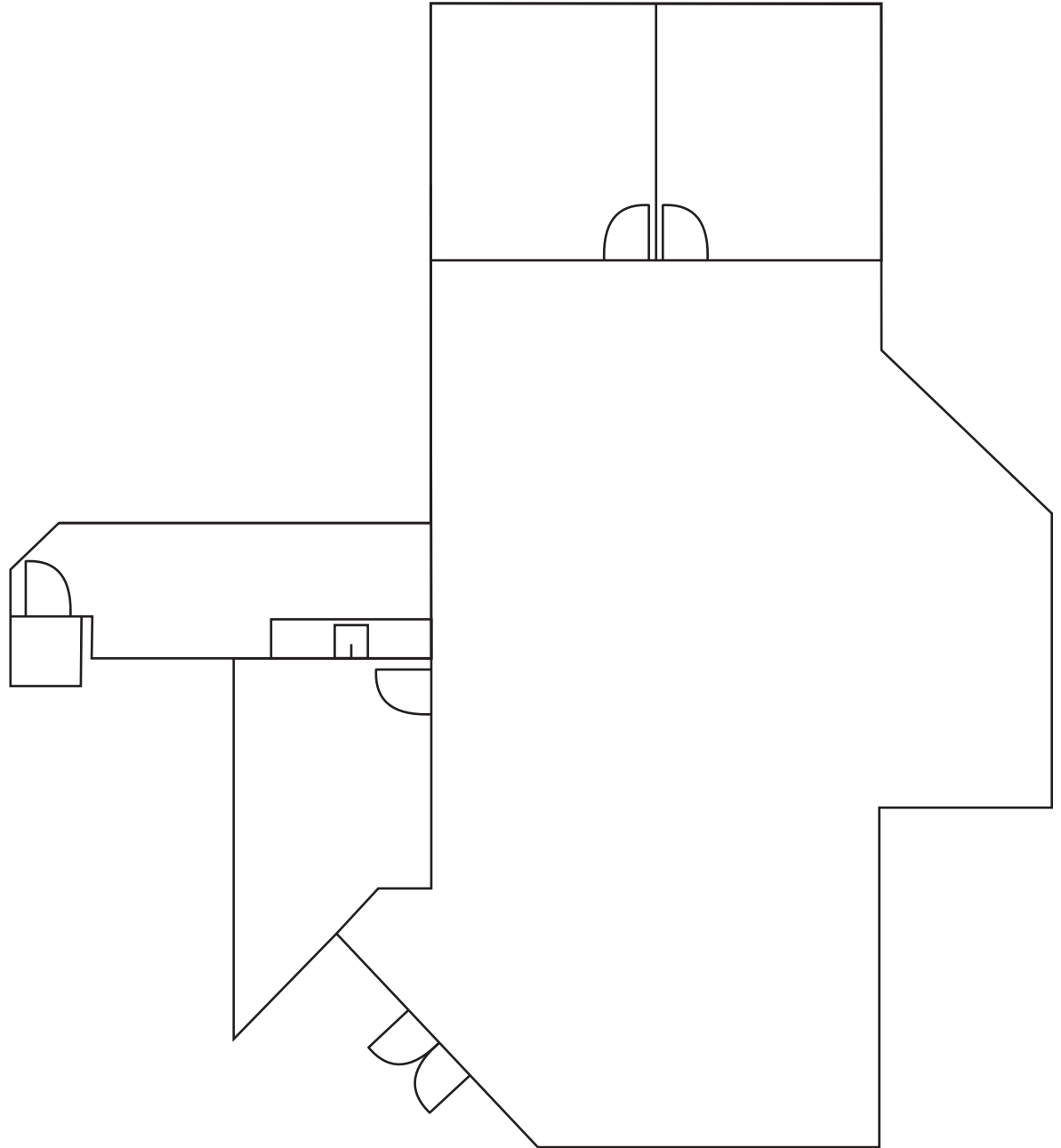
Suite 202

+/- 1,272 SF



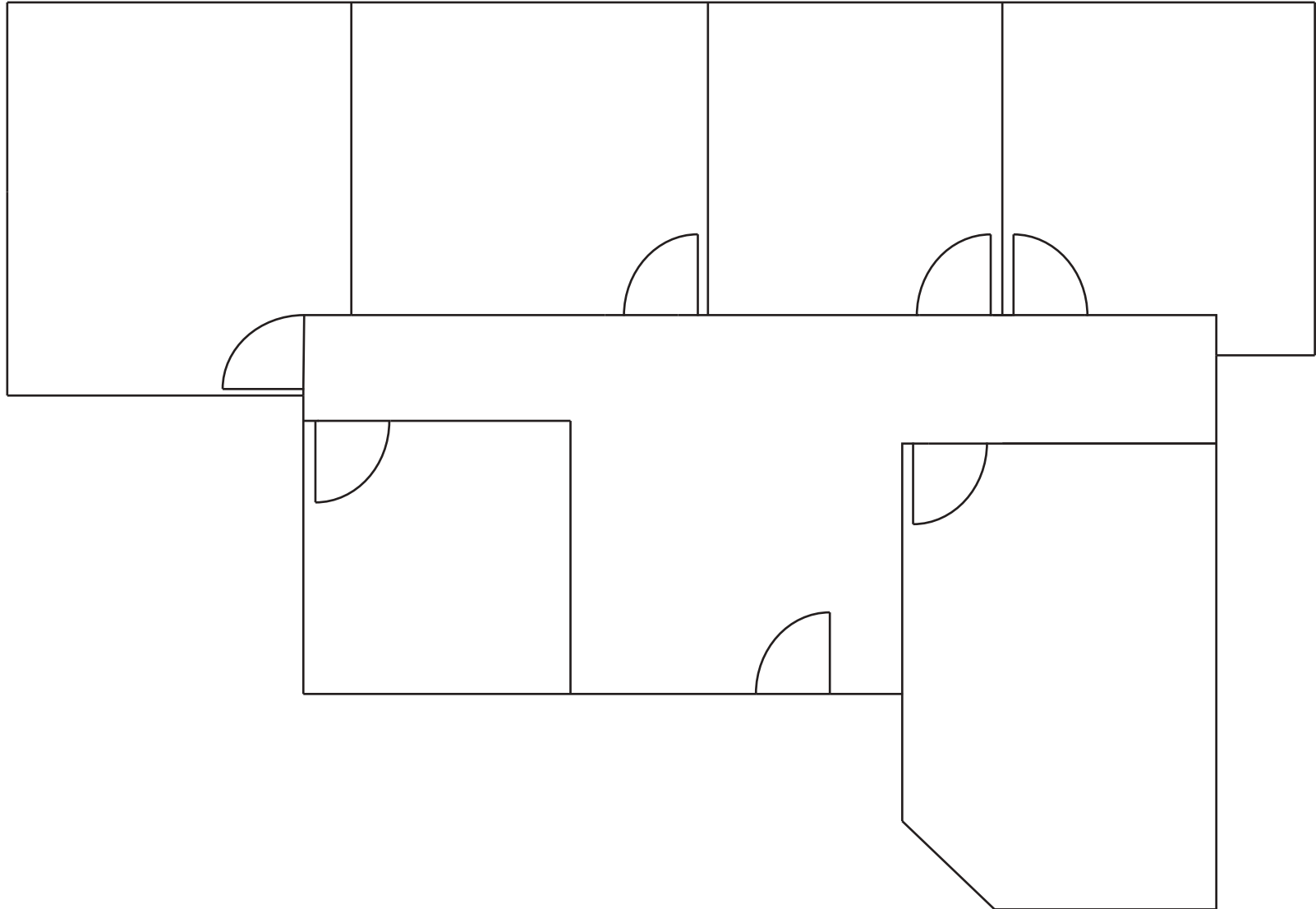
Suite 207

+/- 2,182 SF



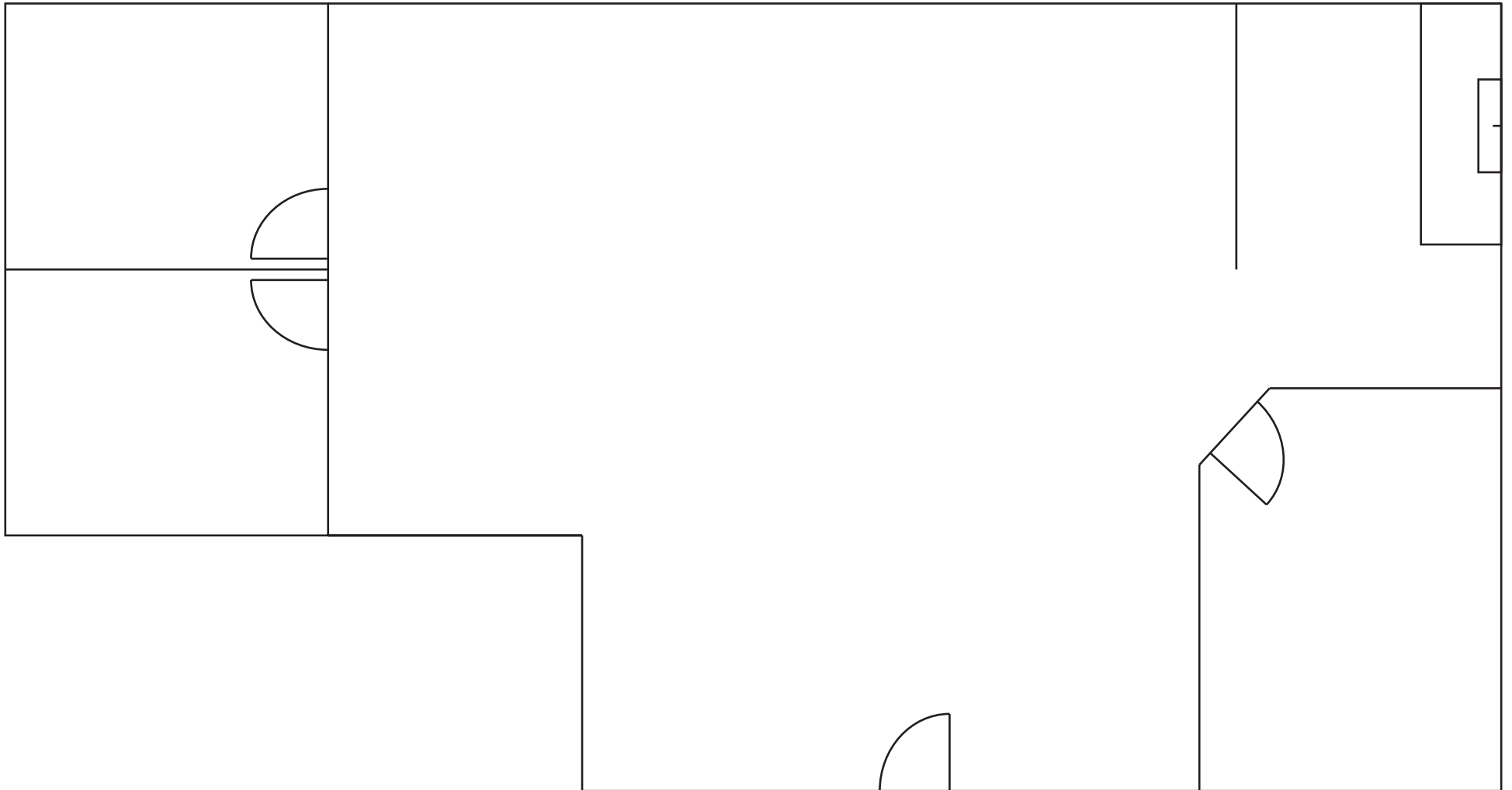
Suite 212

+/- 1,591 SF



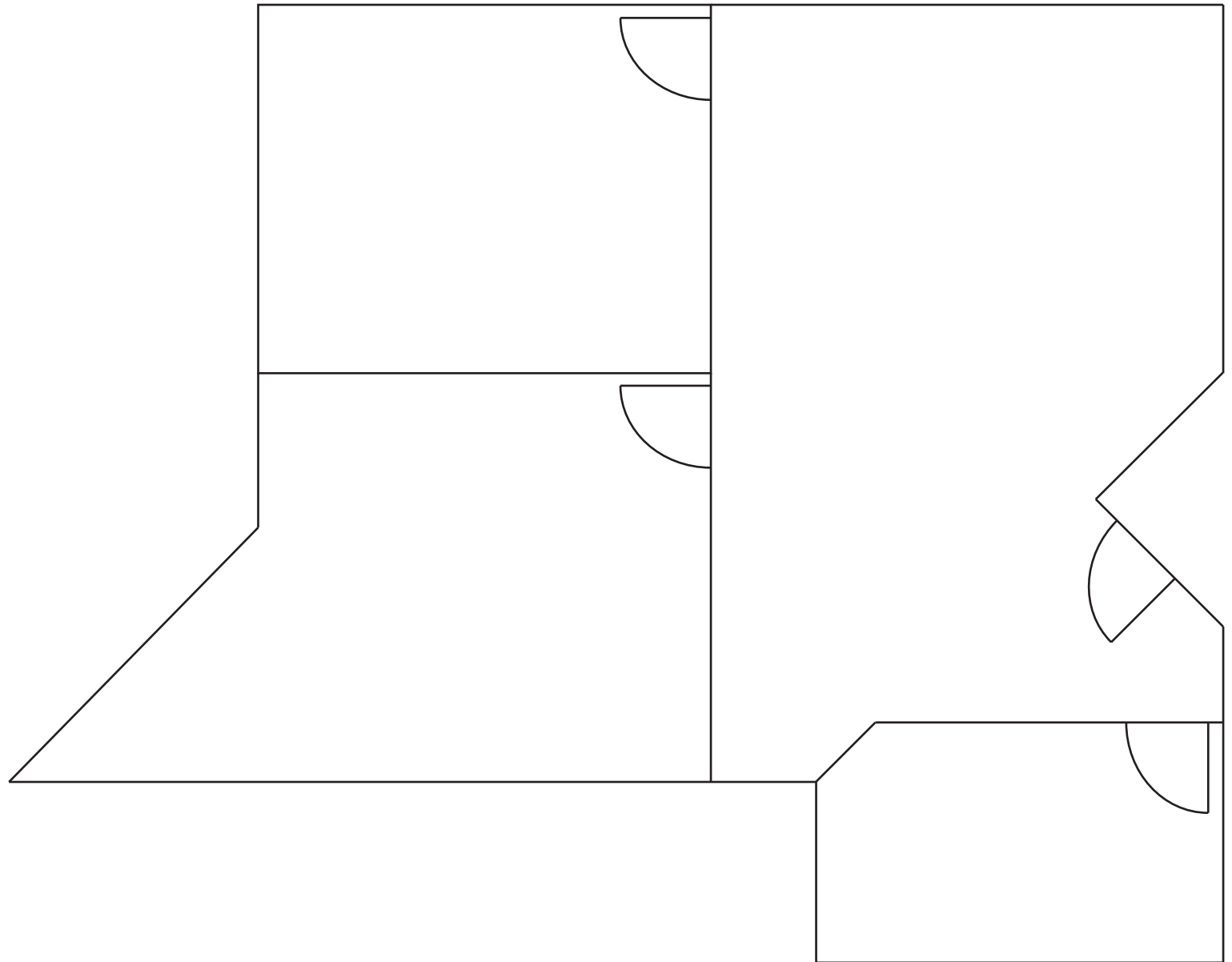
Suite 218

+/- 1,848 SF



Suite 228

+/- 969 SF



Suite 248

+/- 1,311 SF

