

# Retail/Office Space for Lease

# 411 Meeker Avenue

Williamsburg, Brooklyn, NY

## Location:

NE Corner of Manhattan Avenue and Meeker Avenue

## Office Space:

Second Level: 9,000 RSF

## Frontage:

88 FT on Meeker Avenue and 115 FT on Manhattan Avenue

## Ceiling Heights:

12 FT

## Price:

Upon request

## Highlights:

- Newly developed office space available in a mixed use building with luxury residences above
- The space comes with tall ceilings and numerous windows letting a lot of natural lights in
- Located 8 min walking distance away from L-train stop on Graham Avenue station and G-train on Nassau Avenue station
- Delivered in clean white-box condition



**TALEA**



**PHEASANT**

**REUNION**



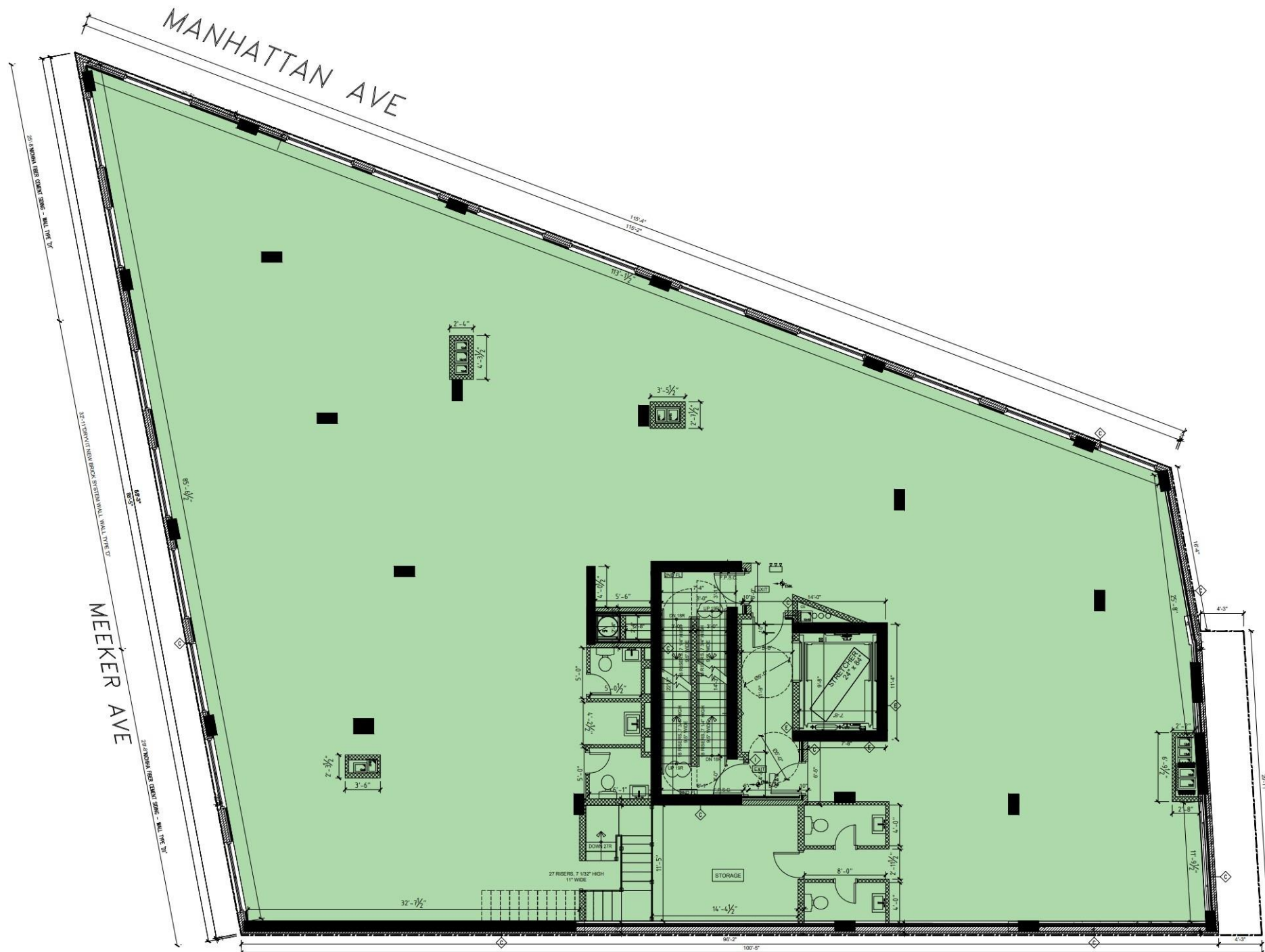
**SLOAN REAL ESTATE**

(516) 350-2621

# 411 Meeker Avenue

Williamsburg, Brooklyn, NY

## Second Level Floorplan



2ND FLOOR PLAN

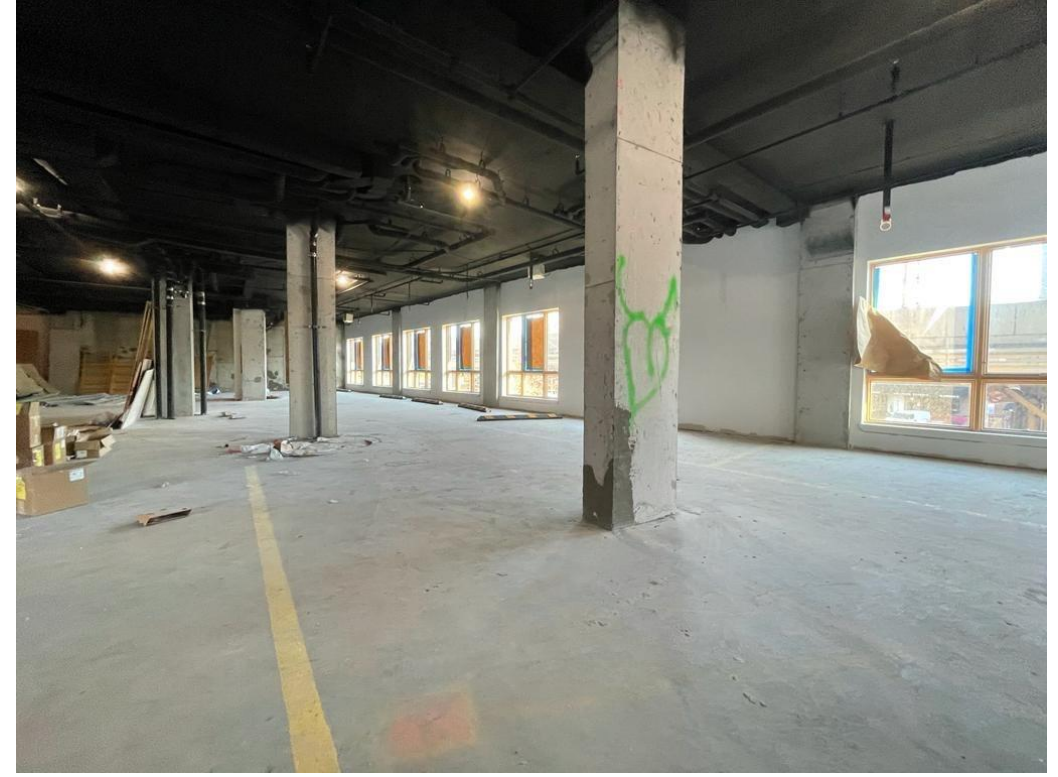
SCALE :3/16" = 1'-0"



# 411 Meeker Avenue

Williamsburg, Brooklyn, NY

## Photos

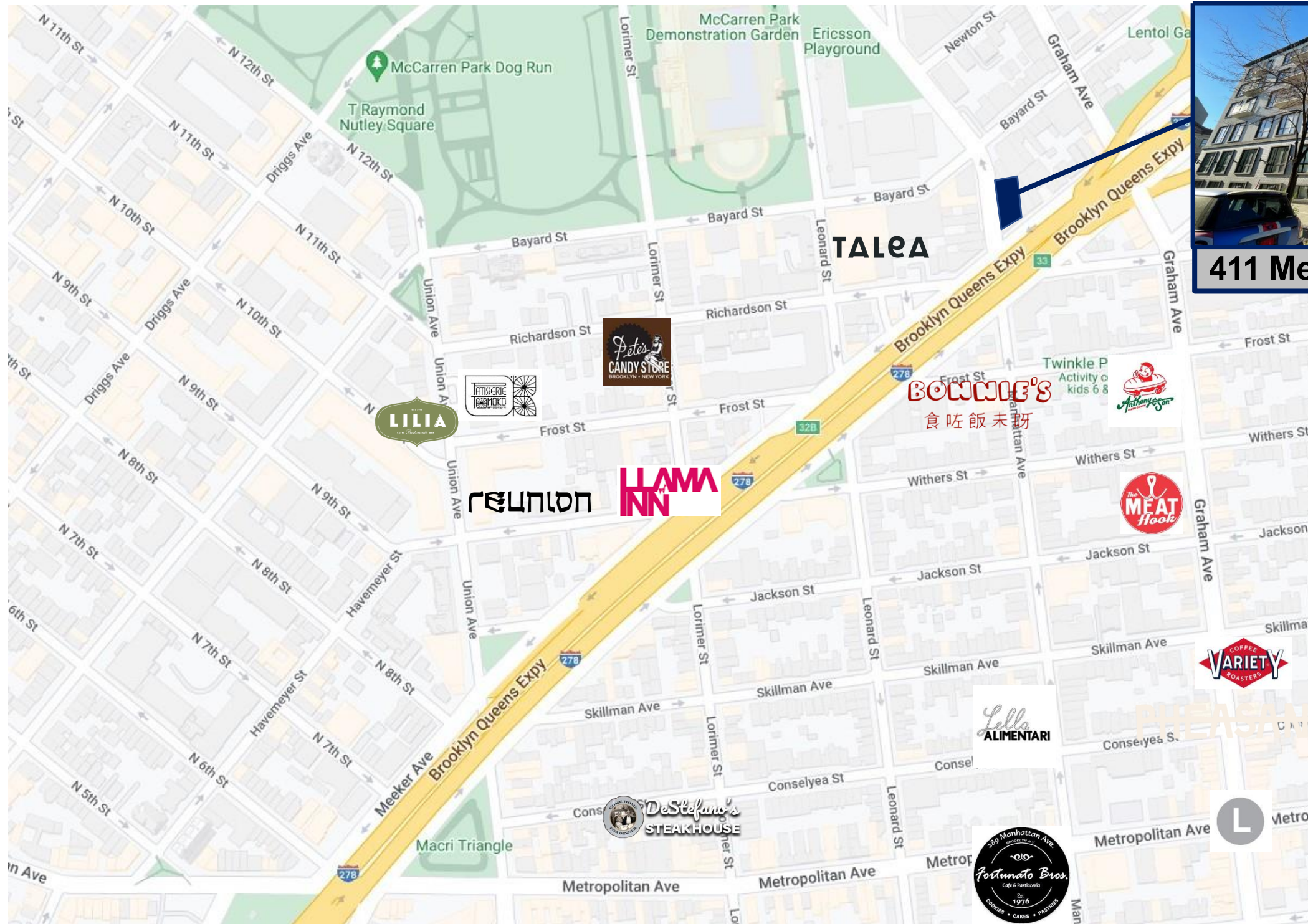




# 411 Meeker Avenue

## Local Map

Williamsburg, Brooklyn, NY



411 Meeker Av



# CONTACT

---

**JOSH SLOAN**

516-350-2621

JS@SLOAN-RE.COM