

VALENCIA EXECUTIVE PLAZA



FOR LEASE | 3,513 SF

HIGH-IMAGE PROFESSIONAL CLASS "A" OFFICE / MEDICAL

27201 Tournay Road | Valencia, CA 91355

YAIR HAIMOFF, SIOR
Executive Managing Director
818.203.5429
yhaimoff@spectrumcre.com
CA DRE Lic. #01414758

ANDREW GHASSEMI
Senior Vice President
661.212.3956
aghassemi@spectrumcre.com
CA DRE Lic. #01963548

MATT SREDEN
Senior Vice President
661.755.6654
msreden@spectrumcre.com
CA DRE Lic. #01907628

No warranty, express or implied, is made as to the accuracy of the information contained herein. This information is submitted subject to errors, omission, change of price, rental or other conditions, withdrawal without notice, and is subject to any special listing conditions imposed by our principals. Cooperating brokers, buyers, tenants and other parties who receive this document should not rely on it, but should use it as a starting point of analysis, and should independently confirm the accuracy of the information contained herein through a due diligence review of the books, records, files and documents that constitute reliable sources of the information described herein. Spectrum Commercial Real Estate, Inc. CA DRE #02042805

SPECTRUM
COMMERCIAL REAL ESTATE, INC.
spectrumcre.com | 661.306.9600

FOR LEASE | 3,513 SF

27201 Tourney Road | Valencia, CA 91355

PROPERTY FEATURES

- Class "A" Office / Medical Building
- Elevator Served
- Tenant Controlled Thermostat (HVAC)
- Well-Designed Suite Layout
- Recently Renovated with High Ceilings
- Extensive Wrap Around Window Line with Beautiful Views
- Championship Golf Course View Along the Back of the Property
- Free & Abundant Parking

LOCATION HIGHLIGHTS

- Situated within Valencia Corporate Center Between Valencia Boulevard & Magic Mountain Parkway
- Close proximity to Starbucks, Valencia Town Center Amenities, Hyatt Hotel & Conference Center, Fitness Facilities, Daycare Centers, Restaurants, Shopping & Championship Golf Courses
- Minutes from Newhall Ranch Development (FivePoint) & Other Neighborhoods
- Immediate Access to/from Interstate 5 Freeway On/Off Ramps
- Easy Access to/from San Fernando Valley, Los Angeles, Glendale, & Pasadena



YAIR HAIMOFF, SIOR
Executive Managing Director
818.203.5429
yhaimoff@spectrumcre.com
CA DRE Lic. #01414758

ANDREW GHASSEMI
Senior Vice President
661.212.3956
aghassemi@spectrumcre.com
CA DRE Lic. #01963548

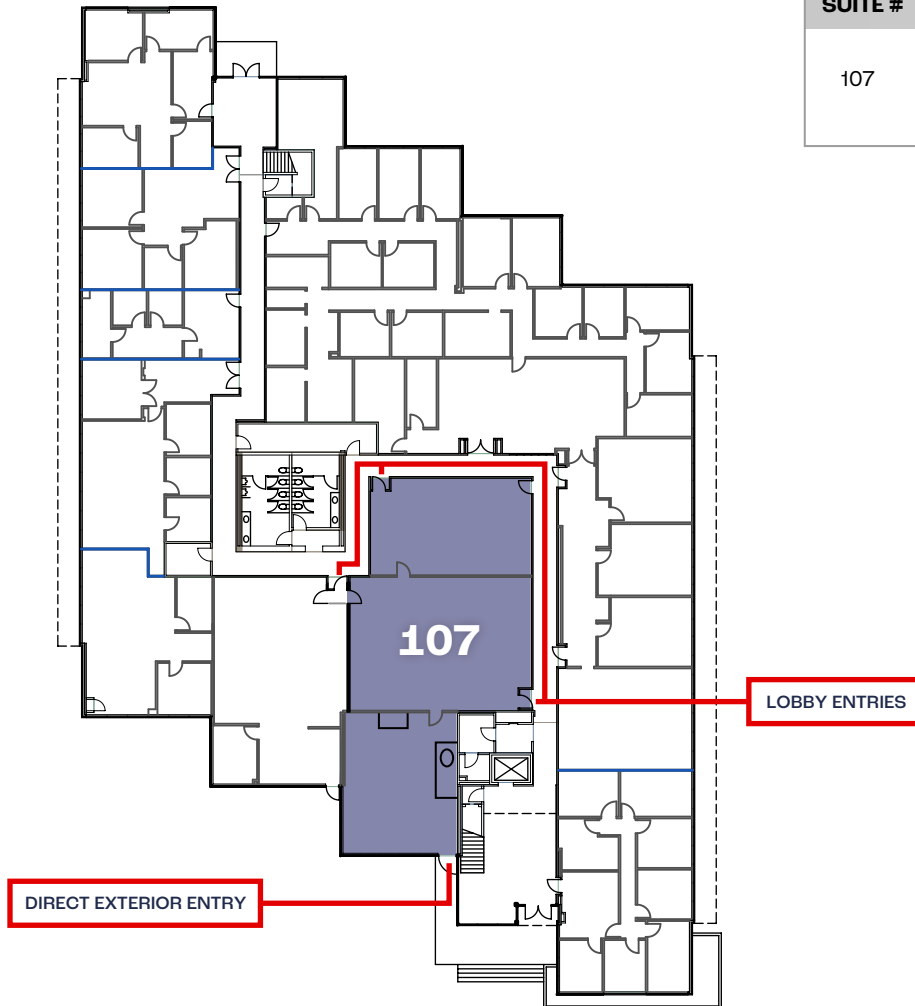
MATT SREDEN
Senior Vice President
661.755.6654
msreden@spectrumcre.com
CA DRE Lic. #01907628

No warranty, express or implied, is made as to the accuracy of the information contained herein. This information is submitted subject to errors, omission, change of price, rental or other conditions, withdrawal without notice, and is subject to any special listing conditions imposed by our principals. Cooperating brokers, buyers, tenants and other parties who receive this document should not rely on it, but should use it as a starting point of analysis, and should independently confirm the accuracy of the information contained herein through a due diligence review of the books, records, files and documents that constitute reliable sources of the information described herein. Spectrum Commercial Real Estate, Inc. CA DRE #02042805

SPECTRUM
COMMERCIAL REAL ESTATE, INC.
spectrumcre.com | 661.306.9600

FOR LEASE | 3,513 SF

27201 Tourney Road | Valencia, CA 91355



SUITE #	SIZE (SF)	NOTES
107	3,513	Prime Corporate Setting. Ground floor suite with dual private entry points off the parking lot, private offices, conference room, multiple bullpen areas, and large breakroom with kitchenette.



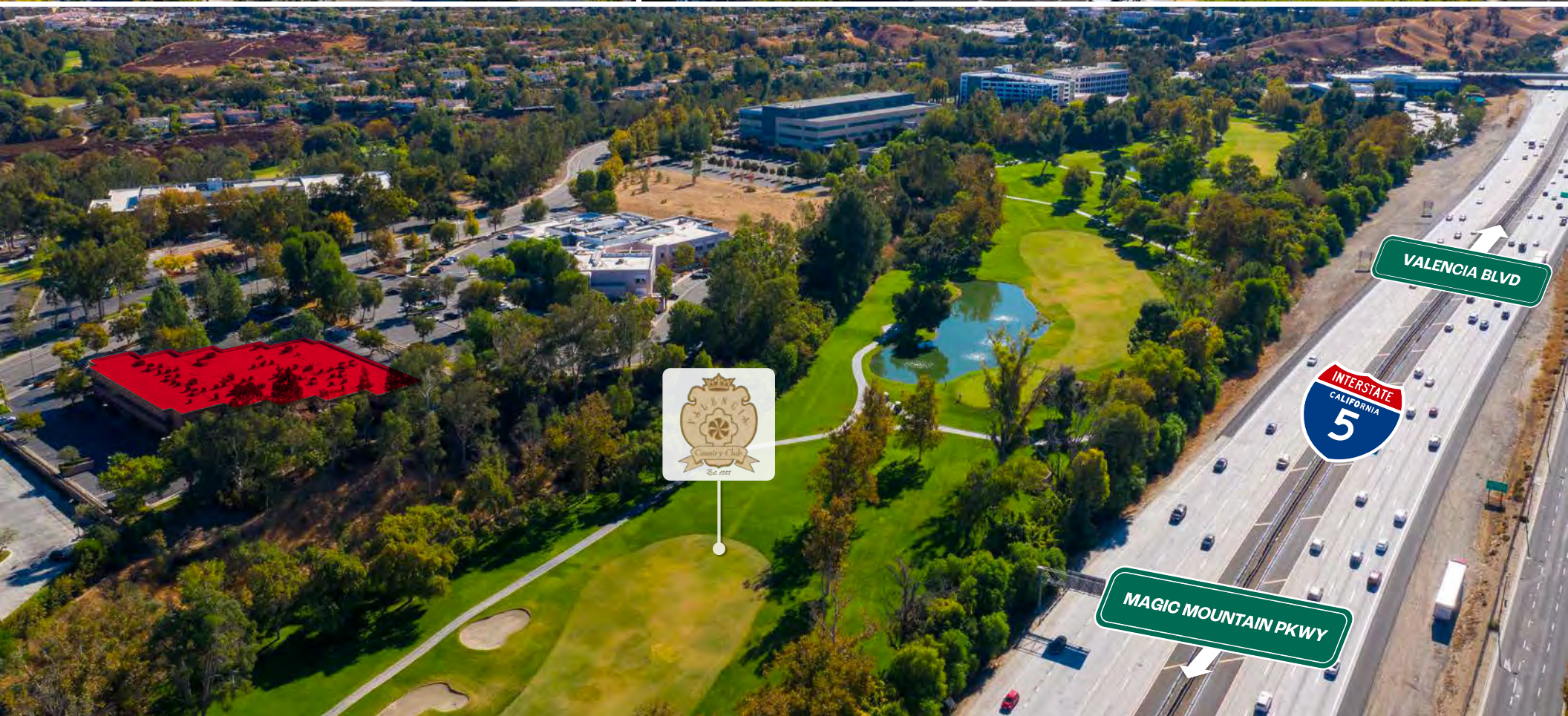
YAIR HAIMOFF, SIOR
Executive Managing Director
818.203.5429
yhaimoff@spectrumcre.com
CA DRE Lic. #01414758

ANDREW GHASSEMI
Senior Vice President
661.212.3956
aghassemi@spectrumcre.com
CA DRE Lic. #01963548

MATT SREDEN
Senior Vice President
661.755.6654
msreden@spectrumcre.com
CA DRE Lic. #01907628

No warranty, express or implied, is made as to the accuracy of the information contained herein. This information is submitted subject to errors, omission, change of price, rental or other conditions, withdrawal without notice, and is subject to any special listing conditions imposed by our principals. Cooperating brokers, buyers, tenants and other parties who receive this document should not rely on it, but should use it as a starting point of analysis, and should independently confirm the accuracy of the information contained herein through a due diligence review of the books, records, files and documents that constitute reliable sources of the information described herein. Spectrum Commercial Real Estate, Inc. CA DRE #02042805

SPECTRUM
COMMERCIAL REAL ESTATE, INC.
spectrumcre.com | 661.306.9600



FOR LEASE | 3,513 SF

27201 Tourney Road | Valencia, CA 91355

AREA AMENITIES & DEMOGRAPHICS



POPULATION

	1 MILE	3 MILES	5 MILES
Estimated Population	8,604	75,918	162,024
Estimated Households	3,413	28,313	55,217



HOUSEHOLD INCOME

	1 MILE	3 MILES	5 MILES
Average Household Income	\$169,944	\$172,121	\$170,359
Median Household Income	\$136,210	\$127,595	\$131,779



DAYTIME POPULATION

	1 MILE	3 MILES	5 MILES
Total Businesses	916	5,233	8,895
Total Employees	8,042	53,859	83,655



YAIR HAIMOFF, SIOR

Executive Managing Director

818.203.5429

yhaimoff@spectrumcre.com

CA DRE Lic. #01414758

ANDREW GHASSEMI

Senior Vice President

661.212.3956

aghassemi@spectrumcre.com

CA DRE Lic. #01963548

MATT SREDEN

Senior Vice President

661.755.6654

msreden@spectrumcre.com

CA DRE Lic. #01907628

No warranty, express or implied, is made as to the accuracy of the information contained herein. This information is submitted subject to errors, omission, change of price, rental or other conditions, withdrawal without notice, and is subject to any special listing conditions imposed by our principals. Cooperating brokers, buyers, tenants and other parties who receive this document should not rely on it, but should use it as a starting point of analysis, and should independently confirm the accuracy of the information contained herein through a due diligence review of the books, records, files and documents that constitute reliable sources of the information described herein. Spectrum Commercial Real Estate, Inc. CA DRE #02042805

SPECTRUM
COMMERCIAL REAL ESTATE, INC.

spectrumcre.com | 661.306.9600

FOR LEASE | 3,513 SF

27201 Tourney Road | Valencia, CA 91355



Valencia Town Center



Valencia Country Club



Henry Mayo Newhall Hospital



UCLA Health



Coffee Houses



Kaiser Permanente



Burger Cuisine



Fitness, Parks, & Trails

YAIR HAIMOFF, SIOR
Executive Managing Director
818.203.5429
yhaimoff@spectrumcre.com
CA DRE Lic. #01414758

ANDREW GHASSEMI
Senior Vice President
661.212.3956
aghassemi@spectrumcre.com
CA DRE Lic. #01963548

MATT SREDEN
Senior Vice President
661.755.6654
msreden@spectrumcre.com
CA DRE Lic. #01907628

No warranty, express or implied, is made as to the accuracy of the information contained herein. This information is submitted subject to errors, omission, change of price, rental or other conditions, withdrawal without notice, and is subject to any special listing conditions imposed by our principals. Cooperating brokers, buyers, tenants and other parties who receive this document should not rely on it, but should use it as a starting point of analysis, and should independently confirm the accuracy of the information contained herein through a due diligence review of the books, records, files and documents that constitute reliable sources of the information described herein. Spectrum Commercial Real Estate, Inc. CA DRE #02042805

SPECTRUM
COMMERCIAL REAL ESTATE, INC.
spectrumcre.com | 661.306.9600