

BROKER BONUS: \$2.50/SF/YR COMMISSION

JOSEPH VANCE BUILDING

1402 3RD AVE, SEATTLE, WA 98101

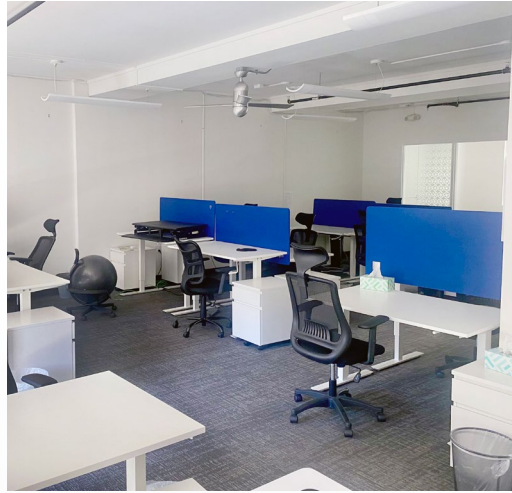
**OFFICE SPACE
FOR LEASE**

**FURNITURE
INCLUDED!**

**MOVE-IN
READY SUITES**

NEWMARK

Availabilities



UNDER 1,000 RSF		
SUITE	SF	VIRTUAL TOUR
427*	753	
515*	797	
525*	933	
630*	484	
800	883	
1019	753	
1030	984	
1230*	986	
1322	759	
1020	768	
1324	804	

1,000-2,000 RSF		
SUITE	SF	VIRTUAL TOUR
510*	1,367	
730	1,476	
817	1,255	
826*	1,592	
912	1,527	
1124	1,073	
1220*	1,068	
1330	1,463	
505*	1,936	

OVER 2,000 RSF		
SUITE	SF	VIRTUAL TOUR
200	6,091	
201	3,078	
501	2,332	
300	2,400	
301*	2,765	
406	3,207	
709	2,756	
717	3,100	
900	2,535	
1305	4,727	

Amenities include two Wi-Fi Conference Rooms and a Tenant Lounge

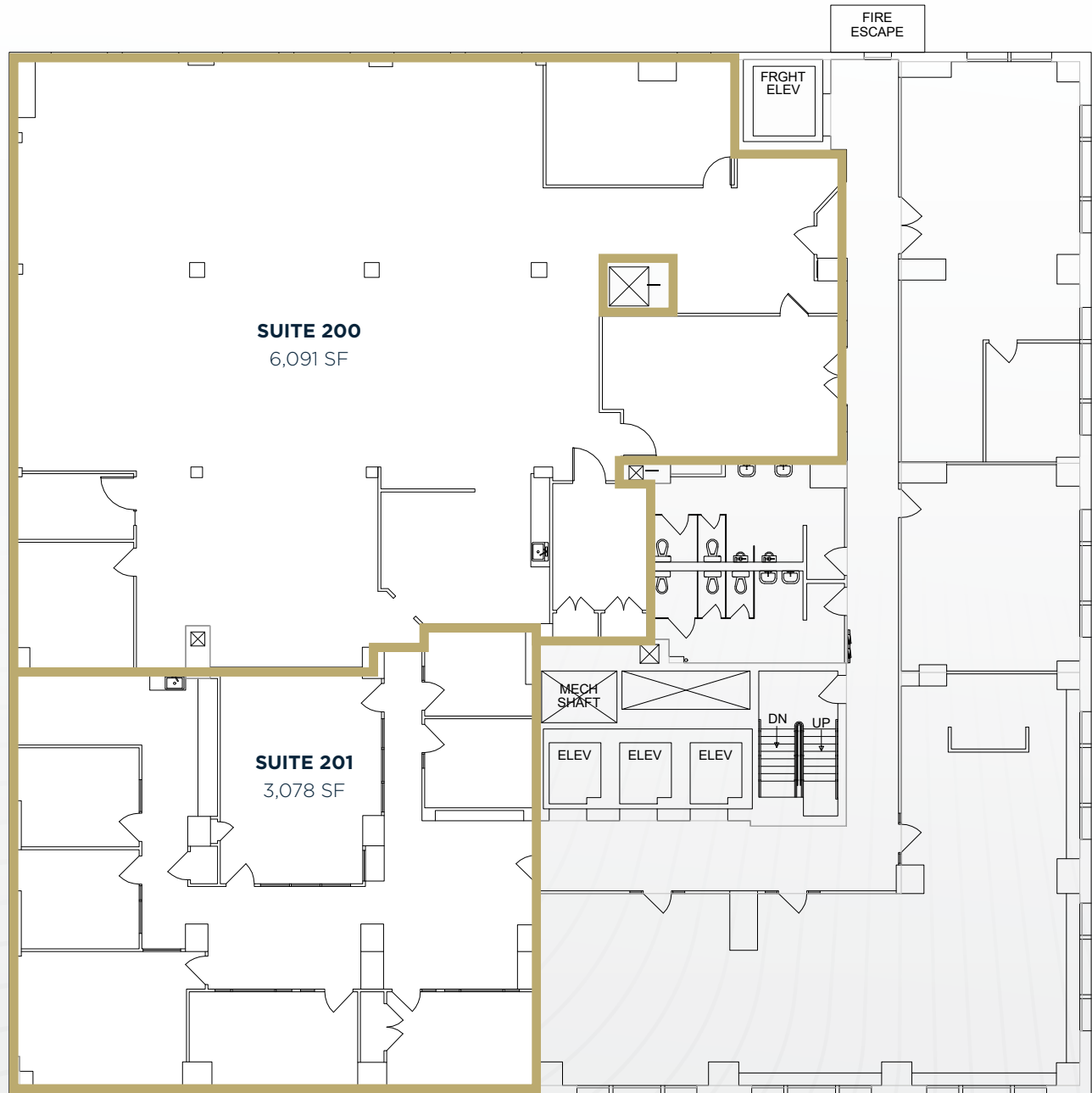
*FURNISHED

JOSEPH VANCE BUILDING

1402 3RD AVE, SEATTLE, WA 98101

OFFICE SPACE
FOR LEASE

Floor 2

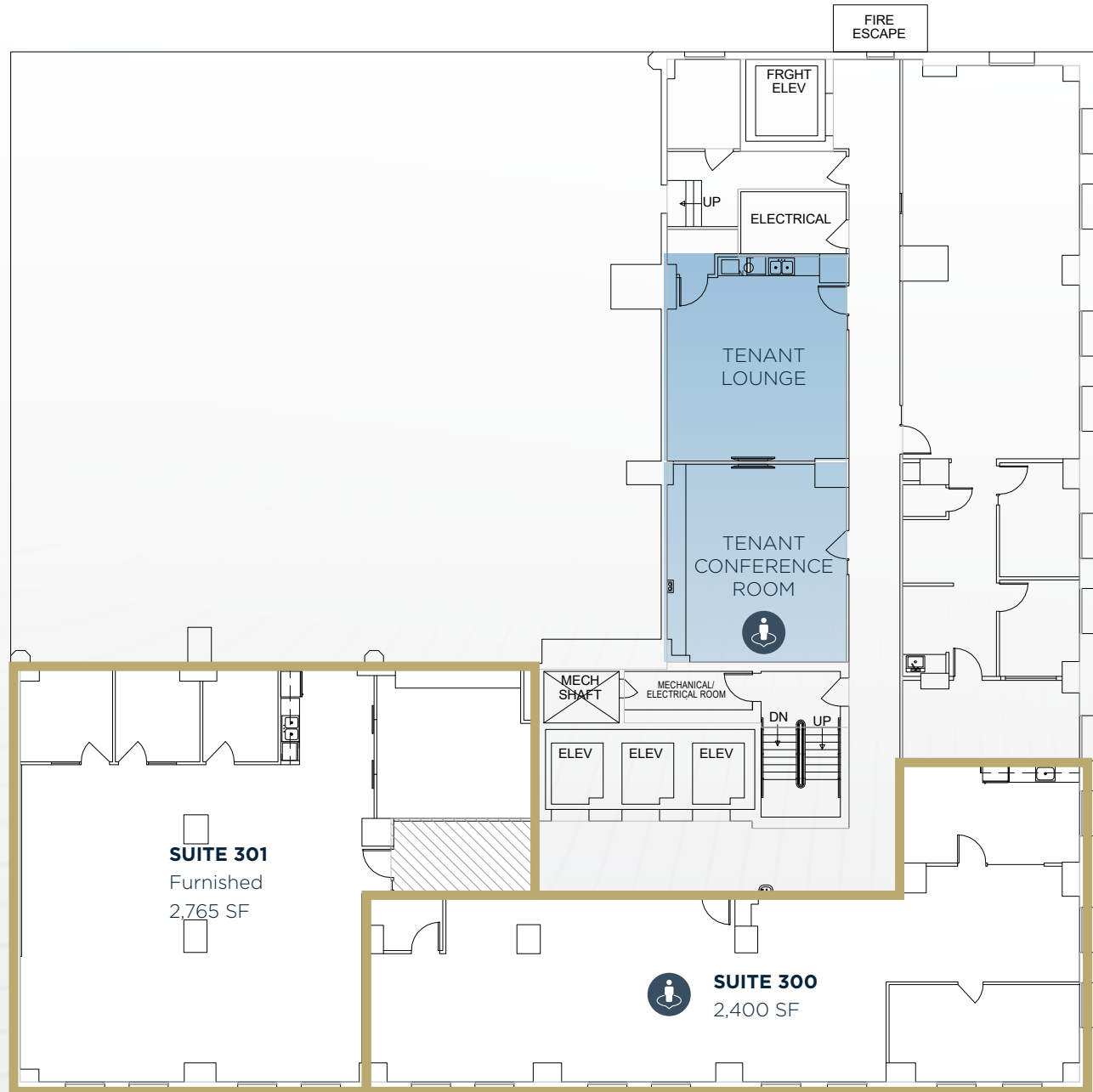


JOSEPH VANCE BUILDING

1402 3RD AVE, SEATTLE, WA 98101

OFFICE SPACE
FOR LEASE

Floor 3



NEWMARK

Tracy Turnure
425-372-9923
tracy.turnure@nmrk.com

Cavan O'Keefe
206-395-2903
cavan.okeefe@nmrk.com

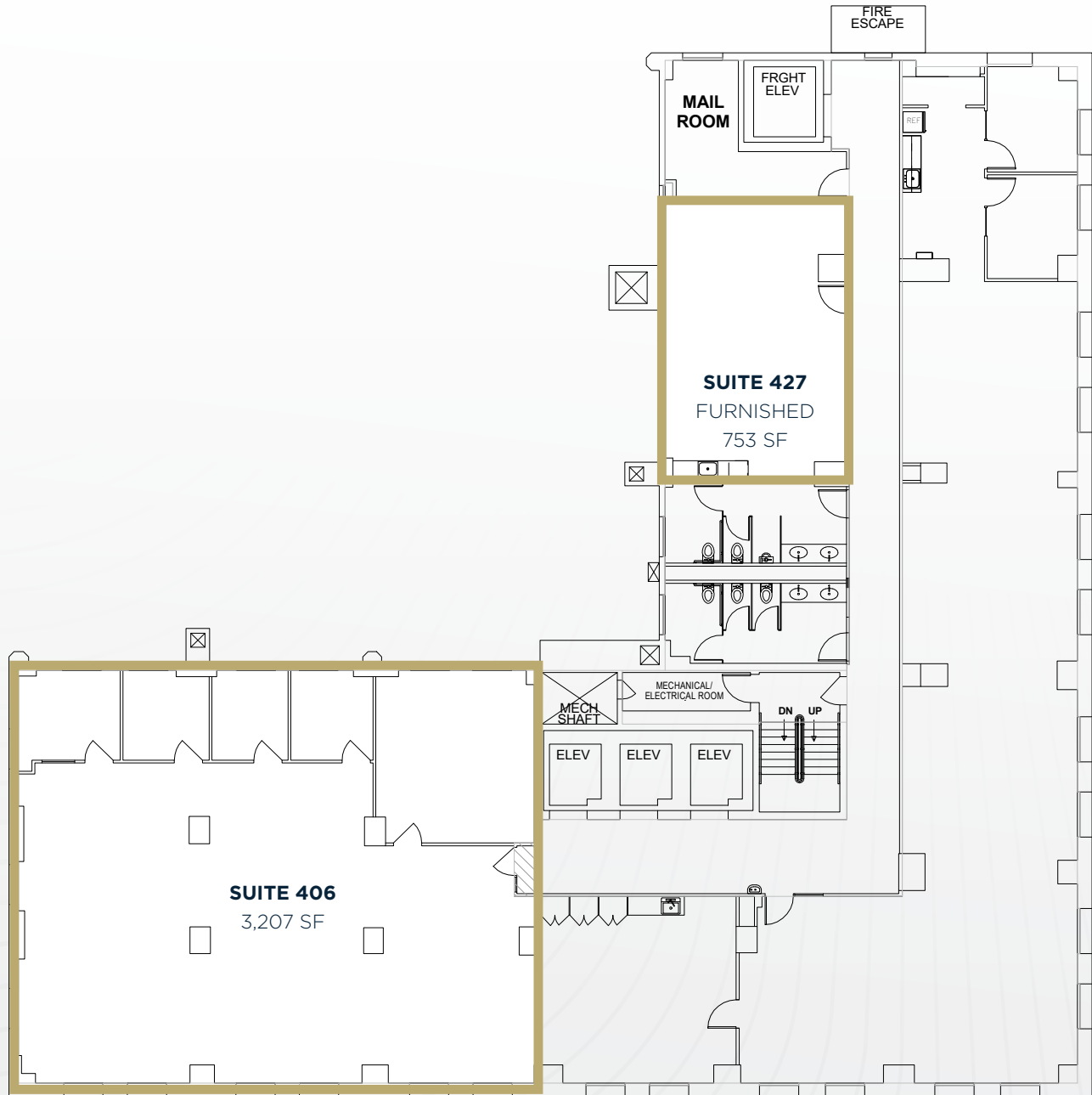
Daniel Seger
206-487-5163
daniel.seger@nmrk.com

JOSEPH VANCE BUILDING

1402 3RD AVE, SEATTLE, WA 98101

OFFICE SPACE
FOR LEASE

Floor 4



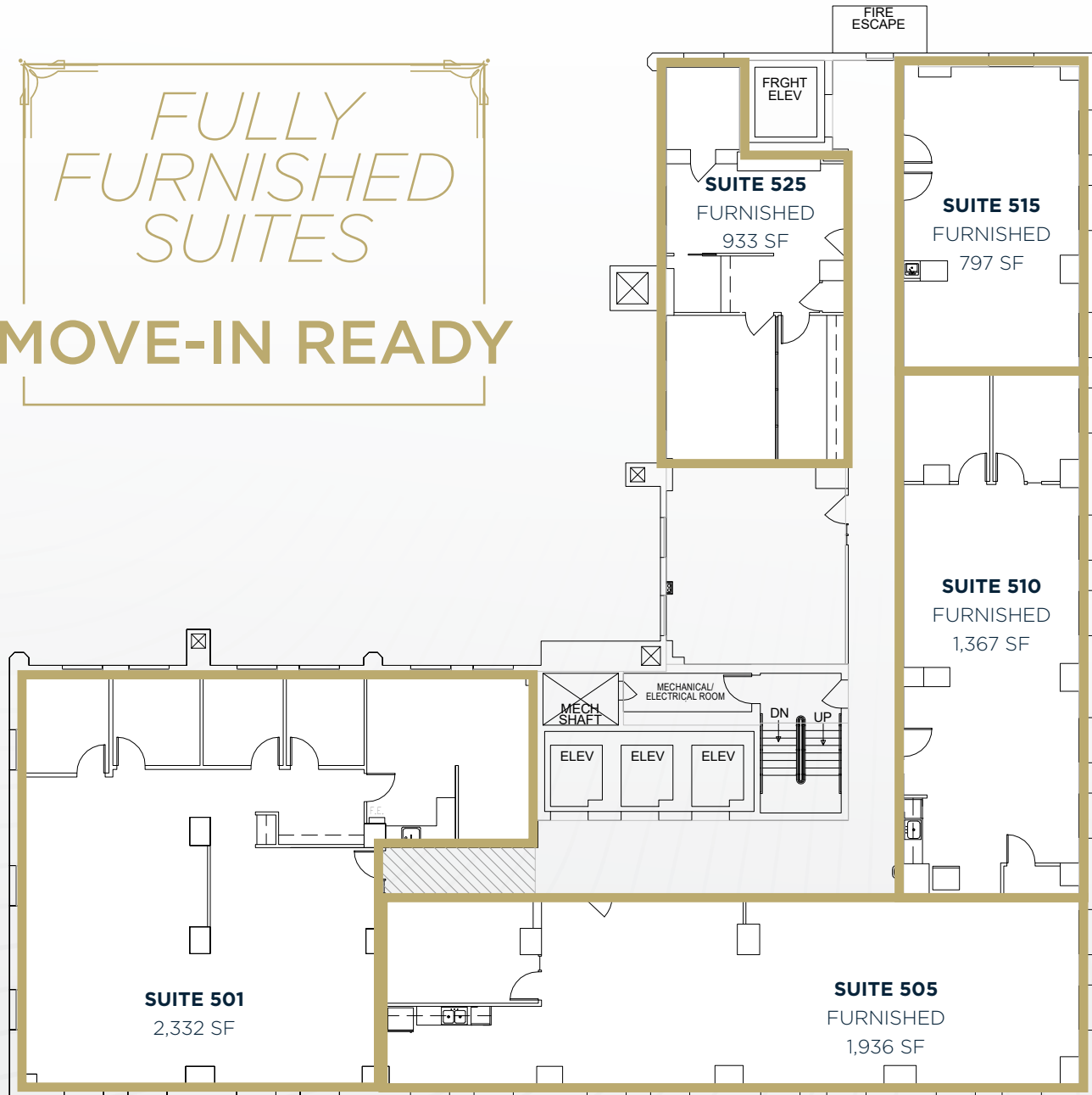
JOSEPH VANCE BUILDING

1402 3RD AVE, SEATTLE, WA 98101

OFFICE SPACE
FOR LEASE

Floor 5

*FULLY
FURNISHED
SUITES*
MOVE-IN READY



NEWMARK

Tracy Turnure
425-372-9923
tracy.turnure@nmrk.com

Cavan O'Keefe
206-395-2903
cavan.okeefe@nmrk.com

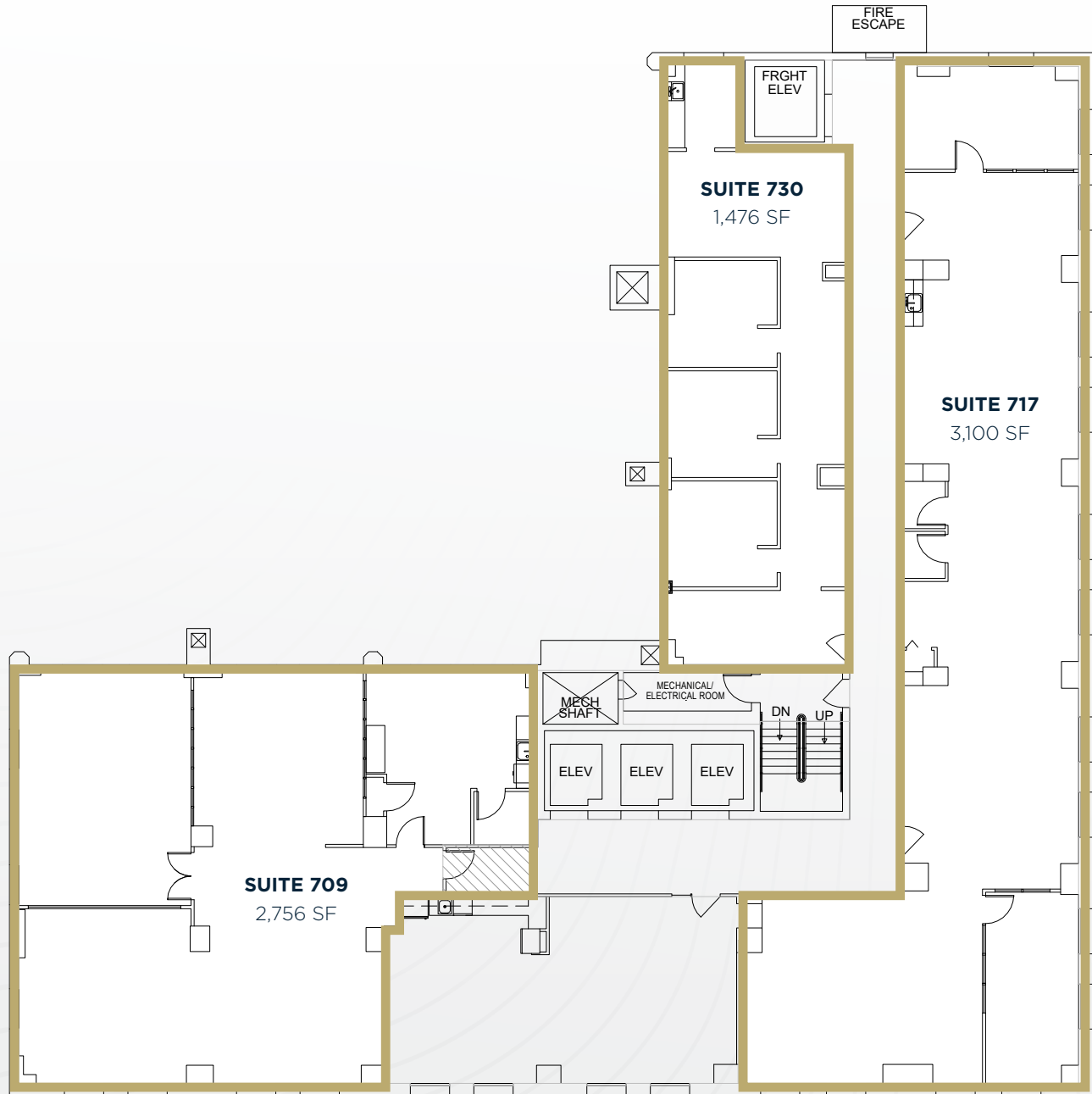
Daniel Seger
206-487-5163
daniel.seger@nmrk.com

JOSEPH VANCE BUILDING

1402 3RD AVE, SEATTLE, WA 98101

OFFICE SPACE
FOR LEASE

Floor 7



NEWMARK

Tracy Turnure
425-372-9923
tracy.turnure@nrmk.com

Cavan O'Keefe
206-395-2903
cavan.okeefe@nrmk.com

Daniel Seger
206-487-5163
daniel.seger@nrmk.com

JOSEPH VANCE BUILDING

1402 3RD AVE, SEATTLE, WA 98101

OFFICE SPACE
FOR LEASE

Floor 9



NEWMARK

Tracy Turnure
425-372-9923
tracy.turnure@nmrk.com

Cavan O'Keefe
206-395-2903
cavan.okeefe@nmrk.com

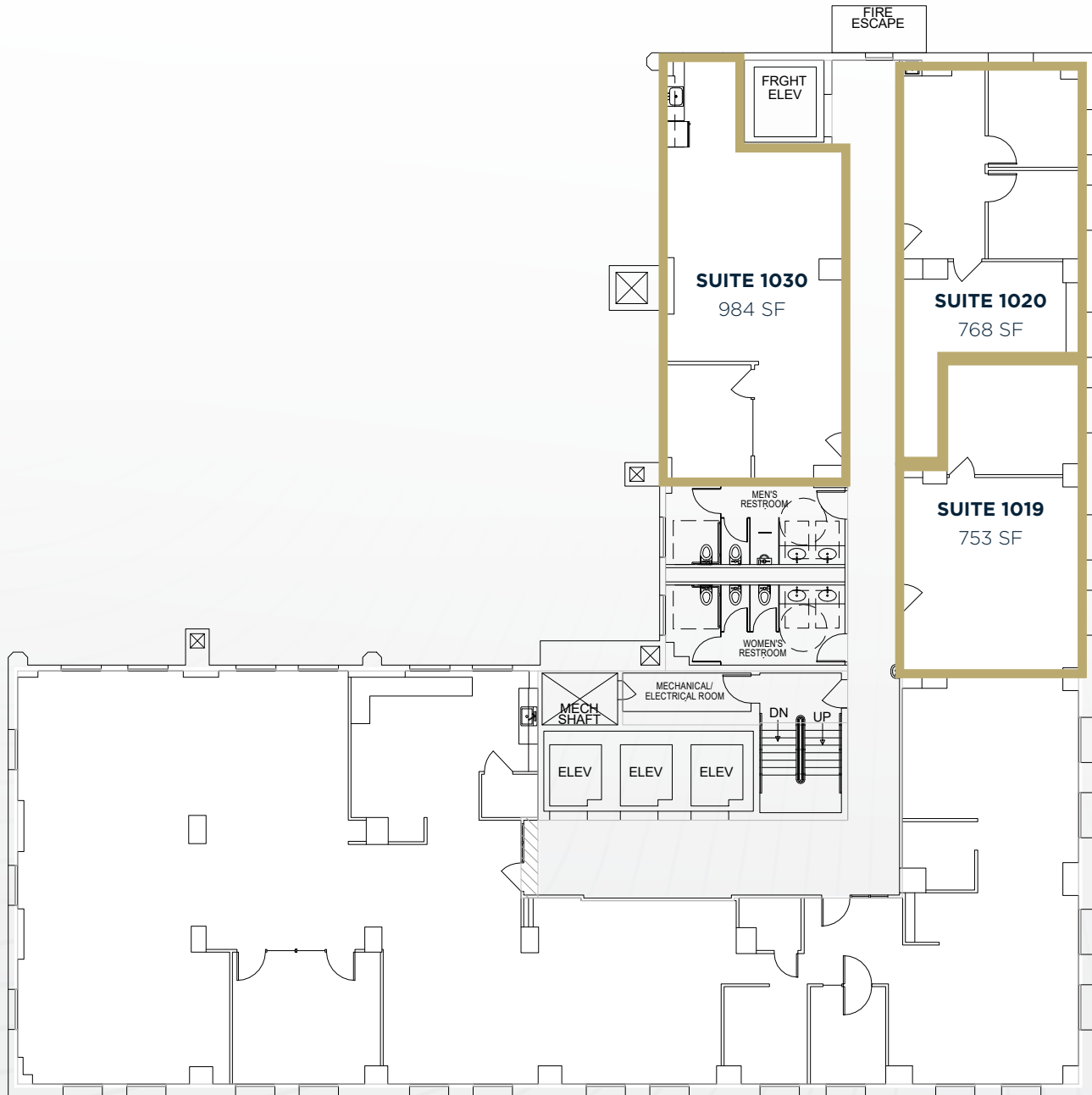
Daniel Seger
206-487-5163
daniel.seger@nmrk.com

JOSEPH VANCE BUILDING

1402 3RD AVE, SEATTLE, WA 98101

OFFICE SPACE
FOR LEASE

Floor 10



NEWMARK

Tracy Turnure
425-372-9923
tracy.turnure@nmrk.com

Cavan O'Keefe
206-395-2903
cavan.okeefe@nmrk.com

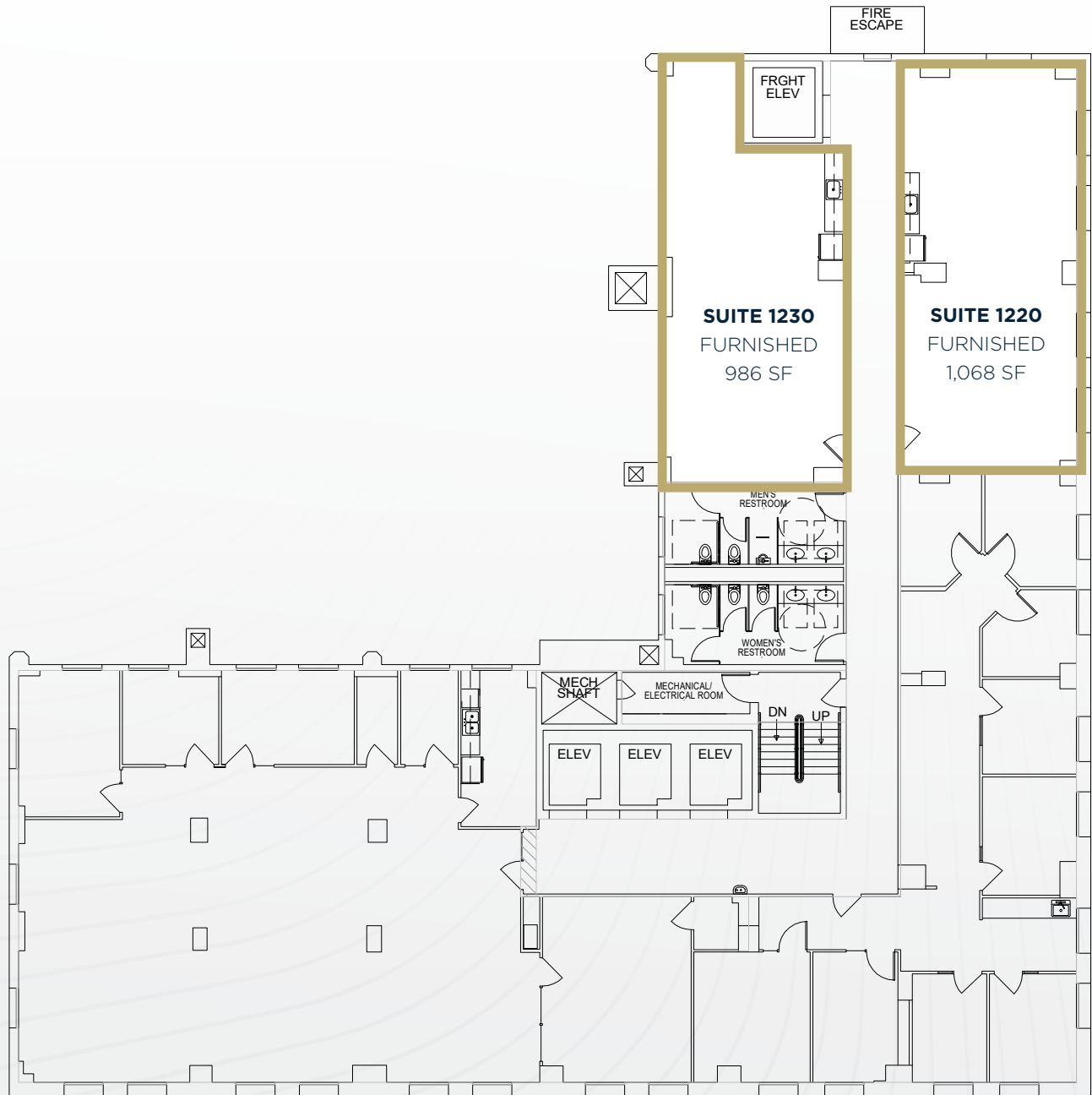
Daniel Seger
206-487-5163
daniel.seger@nmrk.com

JOSEPH VANCE BUILDING

1402 3RD AVE, SEATTLE, WA 98101

OFFICE SPACE
FOR LEASE

Floor 12



NEWMARK

Tracy Turnure
425-372-9923
tracy.turnure@nmrk.com

Cavan O'Keefe
206-395-2903
cavan.okeefe@nmrk.com

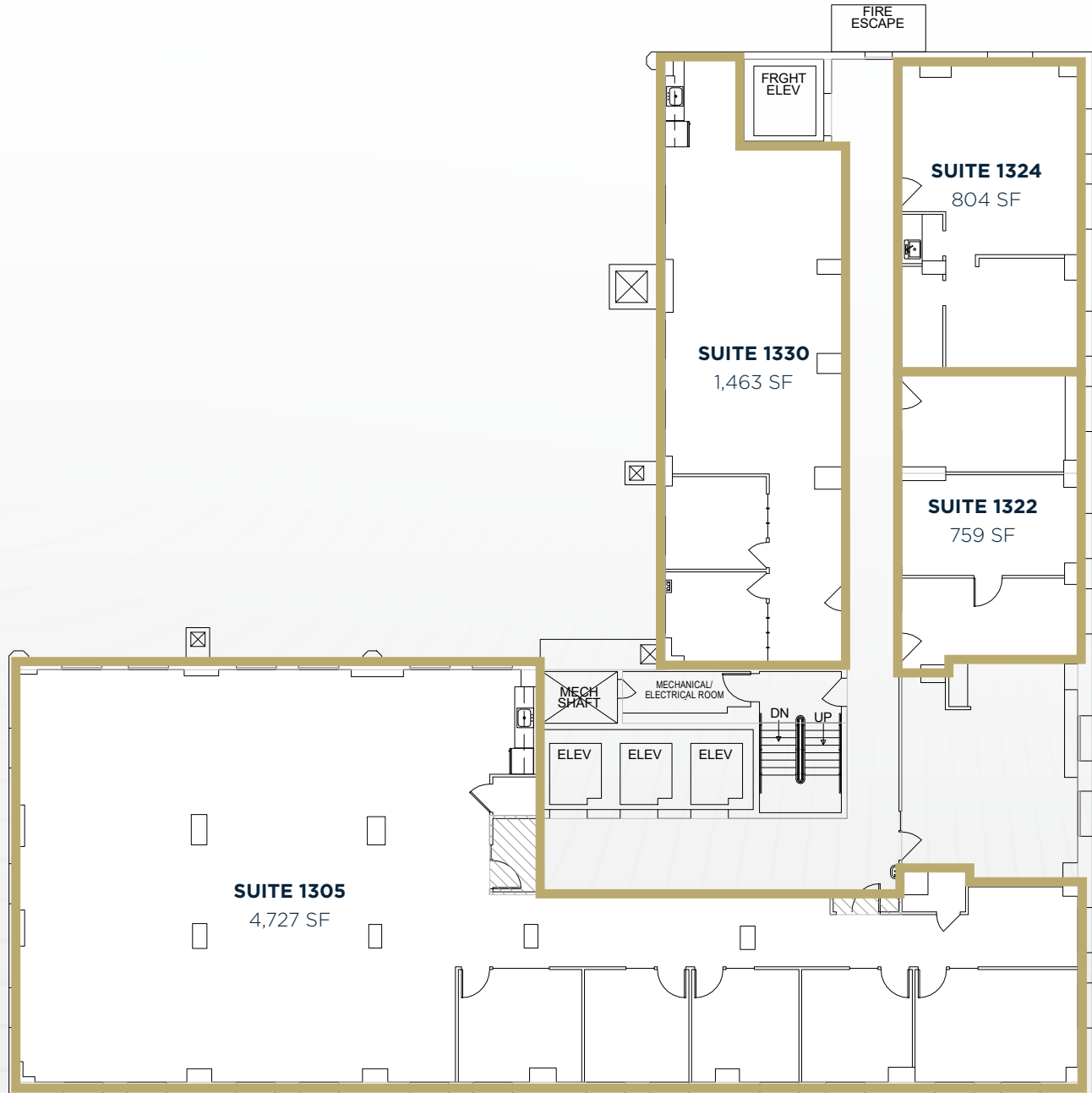
Daniel Seger
206-487-5163
daniel.seger@nmrk.com

JOSEPH VANCE BUILDING

1402 3RD AVE, SEATTLE, WA 98101

OFFICE SPACE
FOR LEASE

Floor 13



NEWMARK

Tracy Turnure
425-372-9923
tracy.turnure@nmrk.com

Cavan O'Keefe
206-395-2903
cavan.okeefe@nmrk.com

Daniel Seger
206-487-5163
daniel.seger@nmrk.com

Building Highlights



Recent 2020 Full Building Renovation



Unobstructed views of Elliott Bay and the Seattle Skyline



On-site security



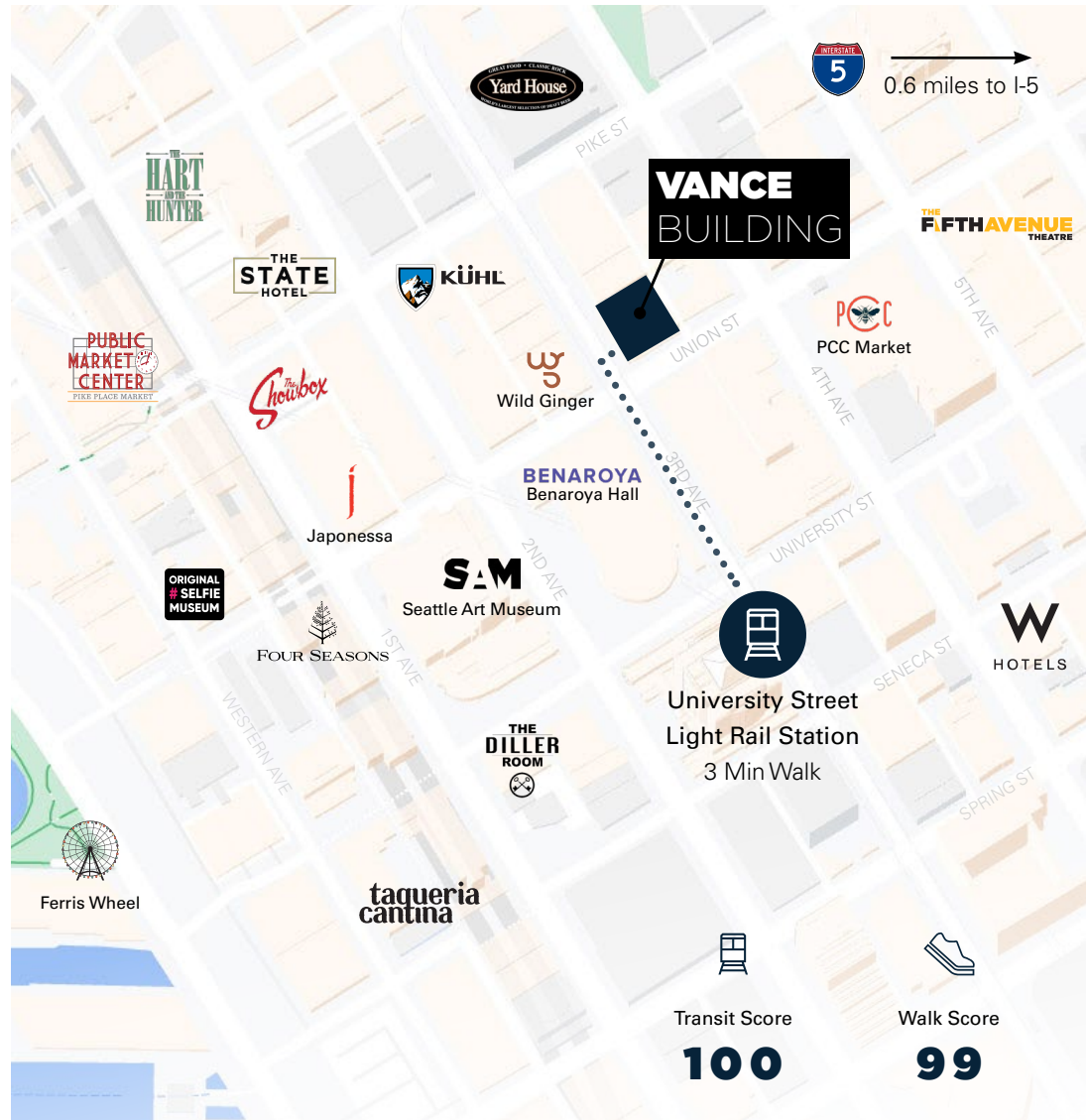
Fully seismically retrofitted and updated fire/life safety



Bike storage and showers



1-block from light rail, and in the center of the retail core



VANCE BUILDING

1402 THIRD AVE, SEATTLE, WA 98101

Tracy Turnure

425-372-9923

tracy.turnure@nmrk.com

Cavan O'Keefe

206-395-2903

cavan.okeefe@nmrk.com

Daniel Seger

206-487-5163

daniel.seger@nmrk.com

NEWMARK

The information contained herein has been obtained from sources deemed reliable but has not been verified and no guarantee, warranty or representation, either express or implied, is made with respect to such information. Terms of sale or lease and availability are subject to change or withdrawal without notice.