

# SALE

## NORTH EL PINTO ROAD

Sullivan City, TX 78595

SALE PRICE

\$150,000



**COLDWELL BANKER** | RIO  
**COMMERCIAL** | GRANDE VALLEY

**Daniel Galvan, SIOR, CCIM**

956 451 2983

dgalvan@cbcworldwide.com

©2022 Coldwell Banker. All Rights Reserved. Coldwell Banker and the Coldwell Banker Commercial logos are trademarks of Coldwell Banker Real Estate LLC. The Coldwell Banker® System is comprised of company owned offices which are owned by a subsidiary of Realogy Brokerage Group LLC and franchised offices which are independently owned and operated. The Coldwell Banker System fully supports the principles of the Equal Opportunity Act.

# SALE

## NORTH EL PINTO ROAD

Sullivan City, TX 78595



### PROPERTY DESCRIPTION

This 2,700 Square feet building was a former church. The site is in a high-traffic area with great visibility and frontage along Expressway 83.

### PROPERTY HIGHLIGHTS

- Excellent Visibility Expressway 83
- High Traffic Location

### OFFERING SUMMARY

Sale Price:	\$150,000
Lot Size:	0.92 Acres
Building Size:	2,700 SF
Zoning:	Commercial

DEMOGRAPHICS	1 MILE	3 MILES	5 MILES
Total Households	148	1,171	2,625
Total Population	481	3,627	8,505
Average HH Income	\$40,979	\$41,844	\$36,841

**Daniel Galvan, SIOR, CCIM**

956 451 2983

dgalvan@cbcworldwide.com

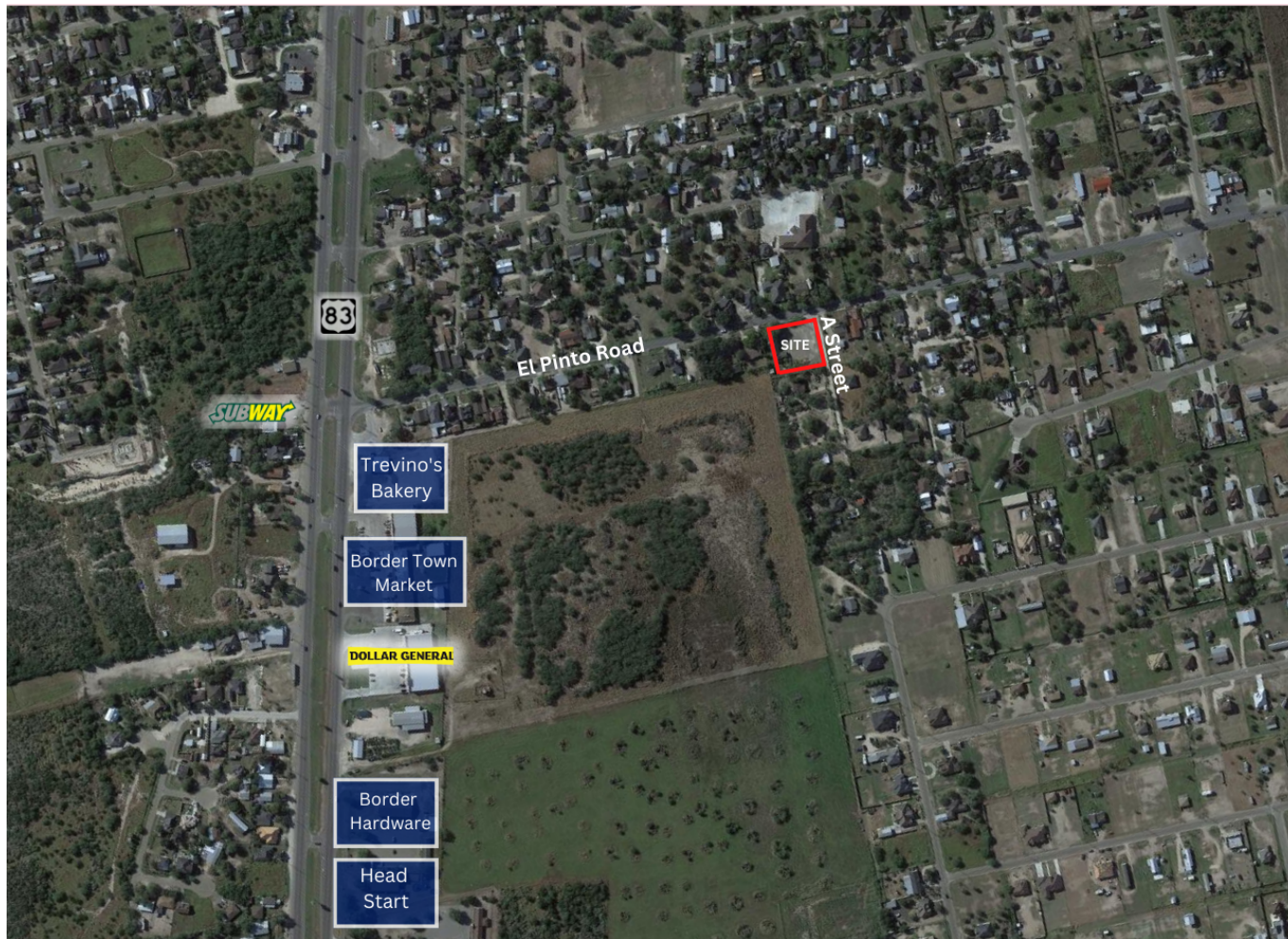




# SALE

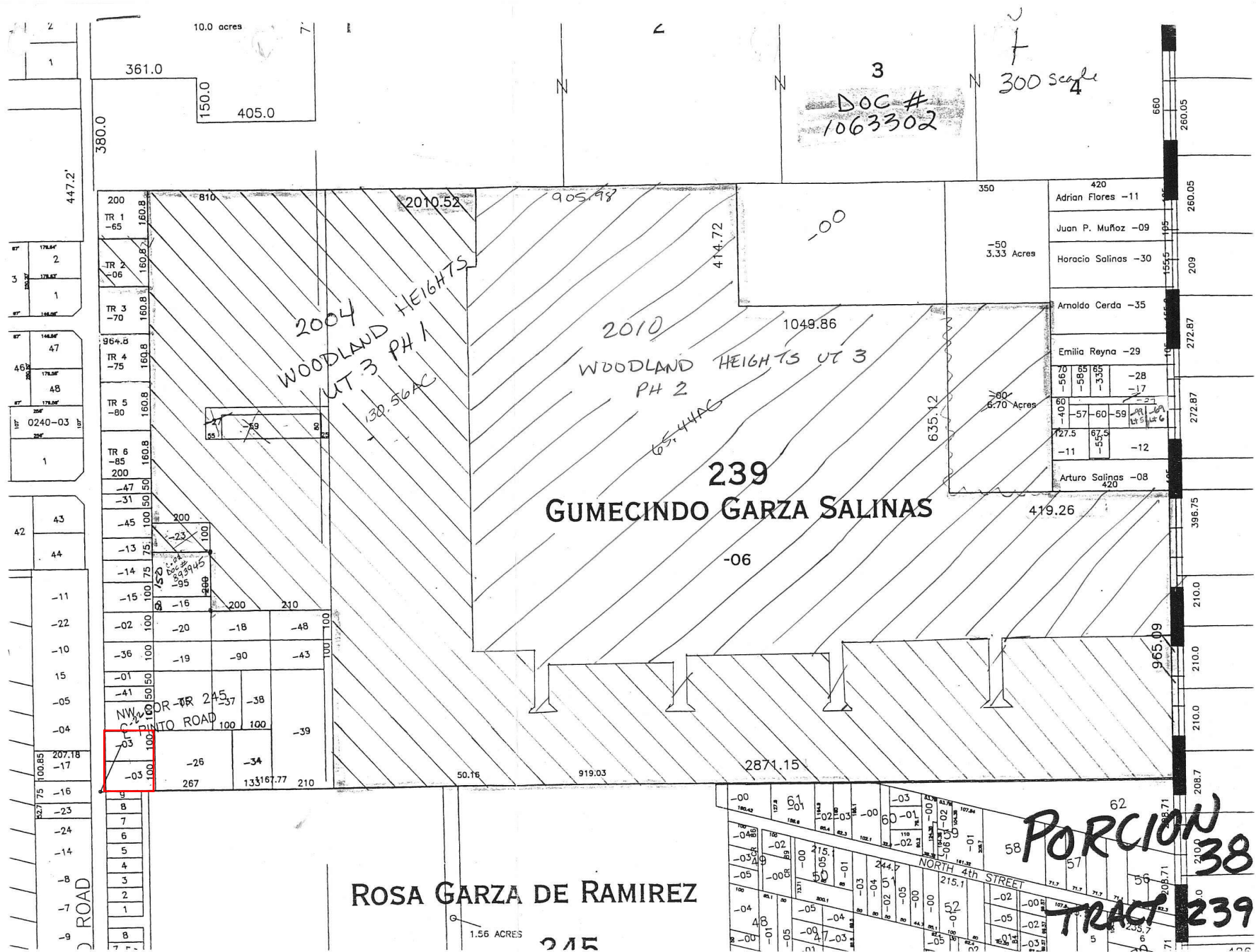
## NORTH EL PINTO ROAD

Sullivan City, TX 78595



**Daniel Galvan, SIOR, CCIM**  
956 451 2983  
dgalvan@cbcworldwide.com





# SALE

## NORTH EL PINTO ROAD

Sullivan City, TX 78595



---

**Daniel Galvan, SIOR, CCIM**  
956 451 2983  
dgalvan@cbcworldwide.com





# SALE

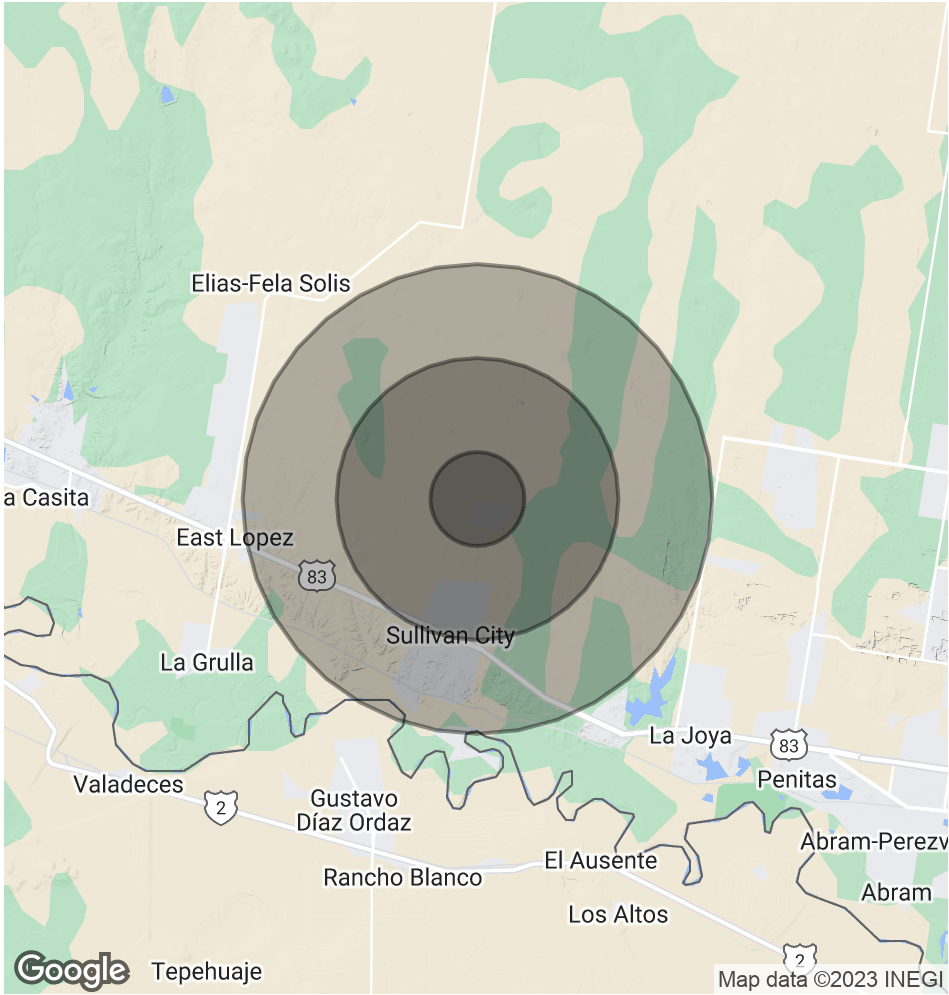
## NORTH EL PINTO ROAD

Sullivan City, TX 78595

POPULATION	1 MILE	3 MILES	5 MILES
Total Population	481	3,627	8,505
Average Age	23.2	30	27.8
Average Age (Male)	22.2	31.7	30.4
Average Age (Female)	24.6	29.6	29.7

HOUSEHOLDS & INCOME	1 MILE	3 MILES	5 MILES
Total Households	148	1,171	2,625
# of Persons per HH	3.3	3.1	3.2
Average HH Income	\$40,979	\$41,844	\$36,841
Average House Value	\$66,038	\$78,688	\$79,908

\* Demographic data derived from 2020 ACS - US Census



**Daniel Galvan, SIOR, CCIM**  
956 451 2983  
dgalvan@cbcworldwide.com

