



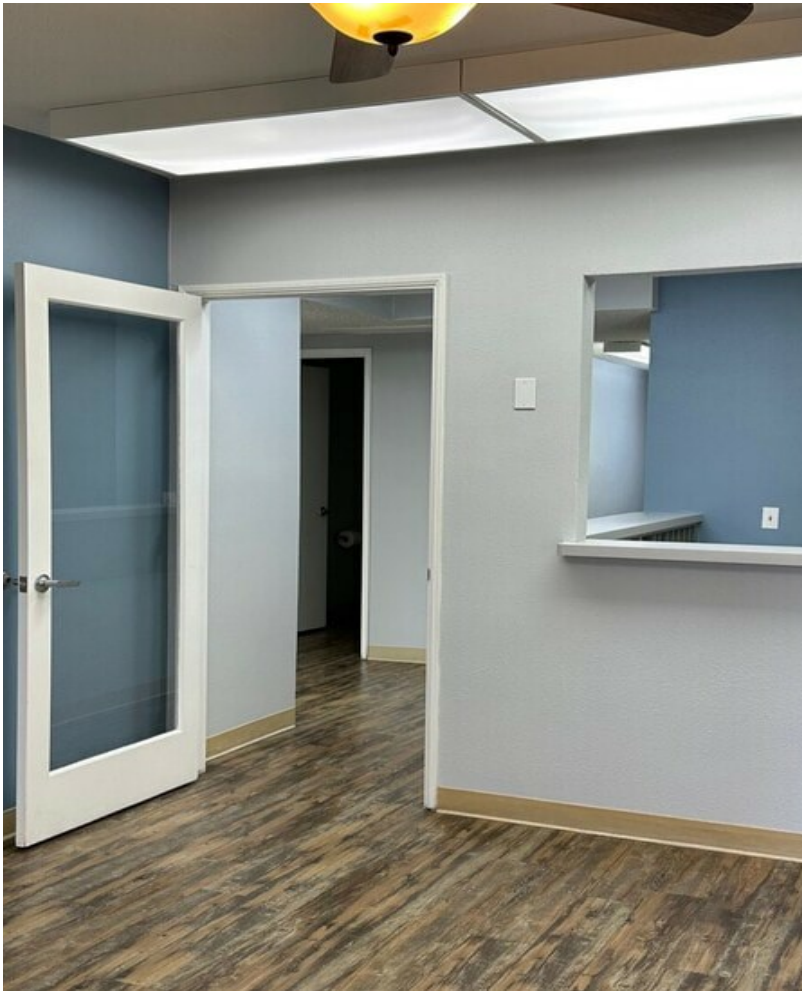
## Valleydale Professional Center

9092 Talbert Ave, Fountain Valley, CA 92708



**Deborah Getty**

Key RE Solutions  
, Temecula, CA 92589  
[deb.keyresolutions@gmail.com](mailto:deb.keyresolutions@gmail.com)  
(951) 384-1638



# Valleydale Professional Center

\$30.00 /SF/YR

- Minutes from the 405 Freeway
  - Surrounded by retail, dining, and residential neighborhoods
  - Ideal for businesses seeking a central Orange County location...
- 
- Dental, Orthodontic or Specialty Use



Rental Rate:	\$30.00 /SF/YR
Property Type:	Office
Property Subtype:	Medical
Building Class:	B
Rentable Building Area:	10,035 SF
Year Built:	1959
Walk Score ®:	73 (Very Walkable)
Transit Score ®:	27 (Some Transit)
Rental Rate Mo:	\$2.50 /SF/MO

## 1st Floor Ste 14

Space Available	1,600 SF
Rental Rate	\$30.00 /SF/YR
Date Available	Now
Service Type	Modified Gross
Built Out As	Dental
Space Type	Relet
Space Use	Medical
Lease Term	3 - 5 Years

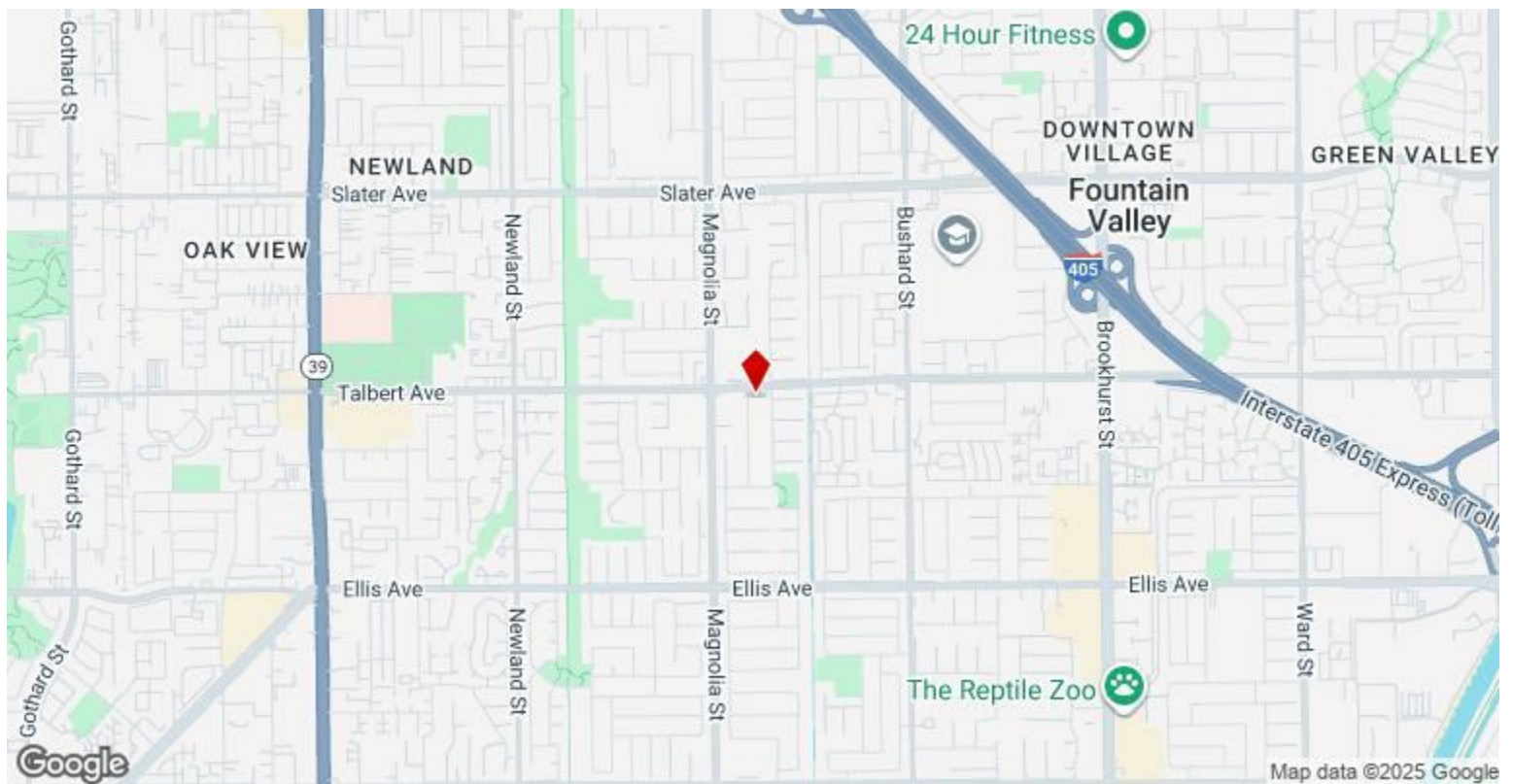
This professionally designed ±1,600 square foot suite is tailored for dental, orthodontic operations or specialty use, offering a clean, cohesive layout with built-in functionality. Welcoming Reception with pass through window and Office Work Area. Spacious Operatory Zone set up for six dental chairs, with plumbing and electrical in place. Two Private Restrooms. Dual-Sink Utility Room with cabinetry and full mirror. Utility Wall with washer/sink plumbing and electrical setup. Second Utility Area with sink, cabinetry and electrical setup. Two Private Offices. Separate file and storage areas.

---

## Major Tenant Information

---

Tenant	SF Occupied	Lease Expired
Bct Enterprise LLC	-	
CB Enterprises Plus, Inc.	-	
Chinese Acupuncture	-	
Fountain Valley Acupuncture	-	
Idida's Style	-	
National Background Security	-	
Oriental Art Garden	-	
Richmond Chiropractic	-	



## 9092 Talbert Ave, Fountain Valley, CA 92708

- Minutes from the 405 Freeway
- Surrounded by retail, dining, and residential neighborhoods
- Ideal for businesses seeking a central Orange County location



## Property Photos





## Property Photos



IMG\_5522



Building Photo

## Property Photos

