

Herndon Pinnacle Office Complex
700 & 650 W. Herndon Avenue Clovis, CA 93612



SMITHGROUP

FOR LEASE

GREG MAROOT
RE/MAX Gold - Broker Associate
(559) 994-0254
gmaroot@comcast.net
DRE #01102553, CA.

PROPERTY DESCRIPTION

Available newly constructed class A office space in the brand new premier Herndon Pinnacle Office Complex building of Fresno & Clovis, which will feature contemporary and distinctive attributes designed by the by the internationally recognized architectural firm SmithGroup.

LOCATION DESCRIPTION

Strategically located on the Herndon Avenue Office corridor with close proximity to Freeway 168. Located between St. Agnes Hospital & Clovis Community Hospital. Adjacent to the premier shopping centers & restaurants of Fresno & Clovis.

SUMMARY

Building SF: Two ± 45,000 SF Buildings

Projected Shell Completion Date: February 2025 - Building A

Available SF: ± 90,000 SF Divisible to 5,000 USF

Lease Rate: Contact Listing Agent

TI Allowance: Negotiable



FOR LEASE

HERNDON PINNACLE OFFICE COMPLEX

700 W. HERNDON AVENUE, CLOVIS, CA 93612



RE/MAX GOLD
COMMERCIAL

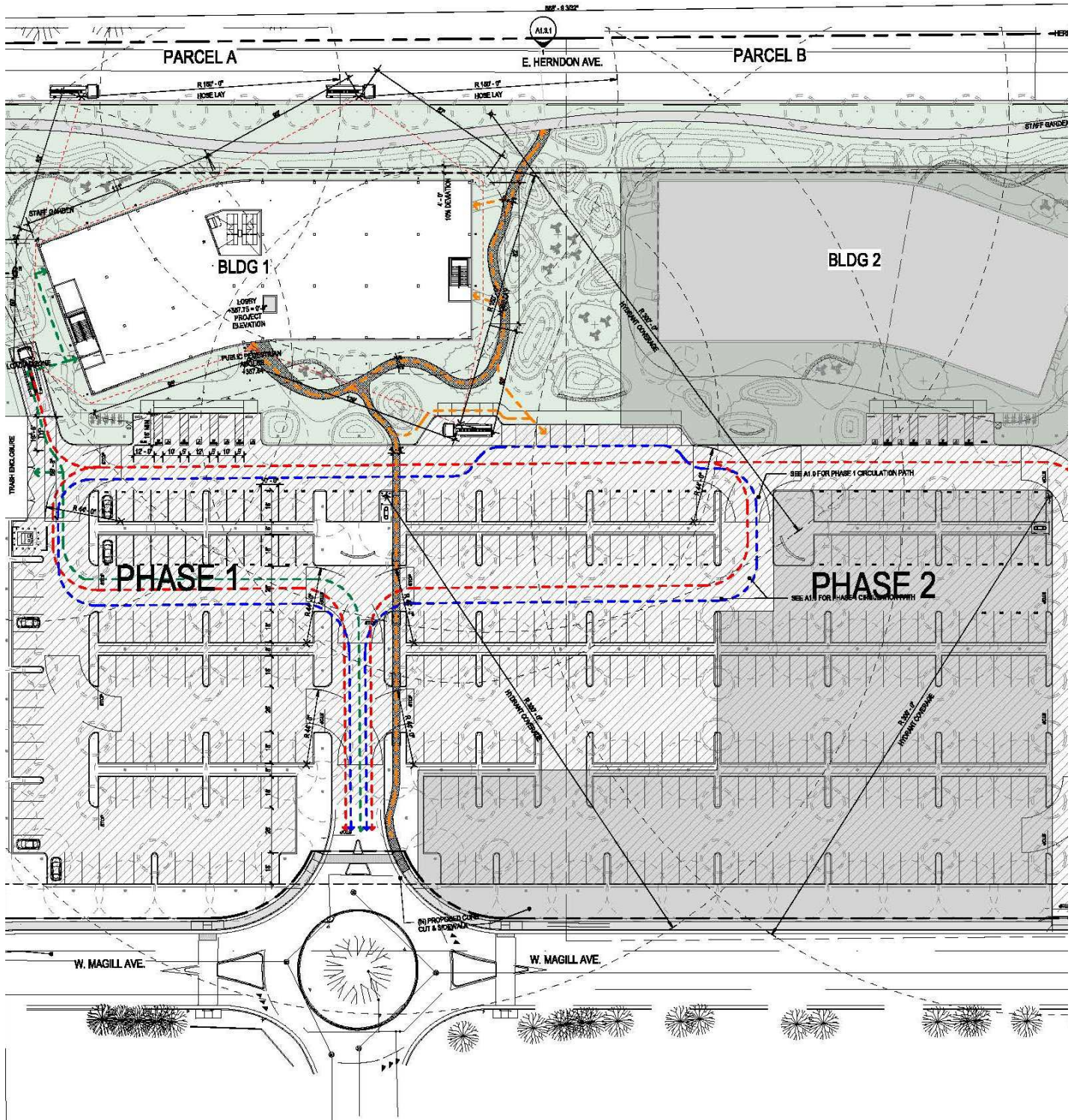
RE/MAX GOLD
Each office independently owned and operated

GREG MAROOT
RE/MAX Gold - Broker Associate
(559) 994-0254
gmaroot@comcast.net
7815 N. Palm Ave. Ste. 120
Fresno, CA. 93711

*This communication is not intended to cause or induce breach of an existing agency agreement. All information contained herein is deemed reliable but not guaranteed. *Personal Real Estate Corporation*

HERNDON PINNACLE OFFICE COMPLEX

700 W. HERNDON AVENUE, CLOVIS, CA 93612

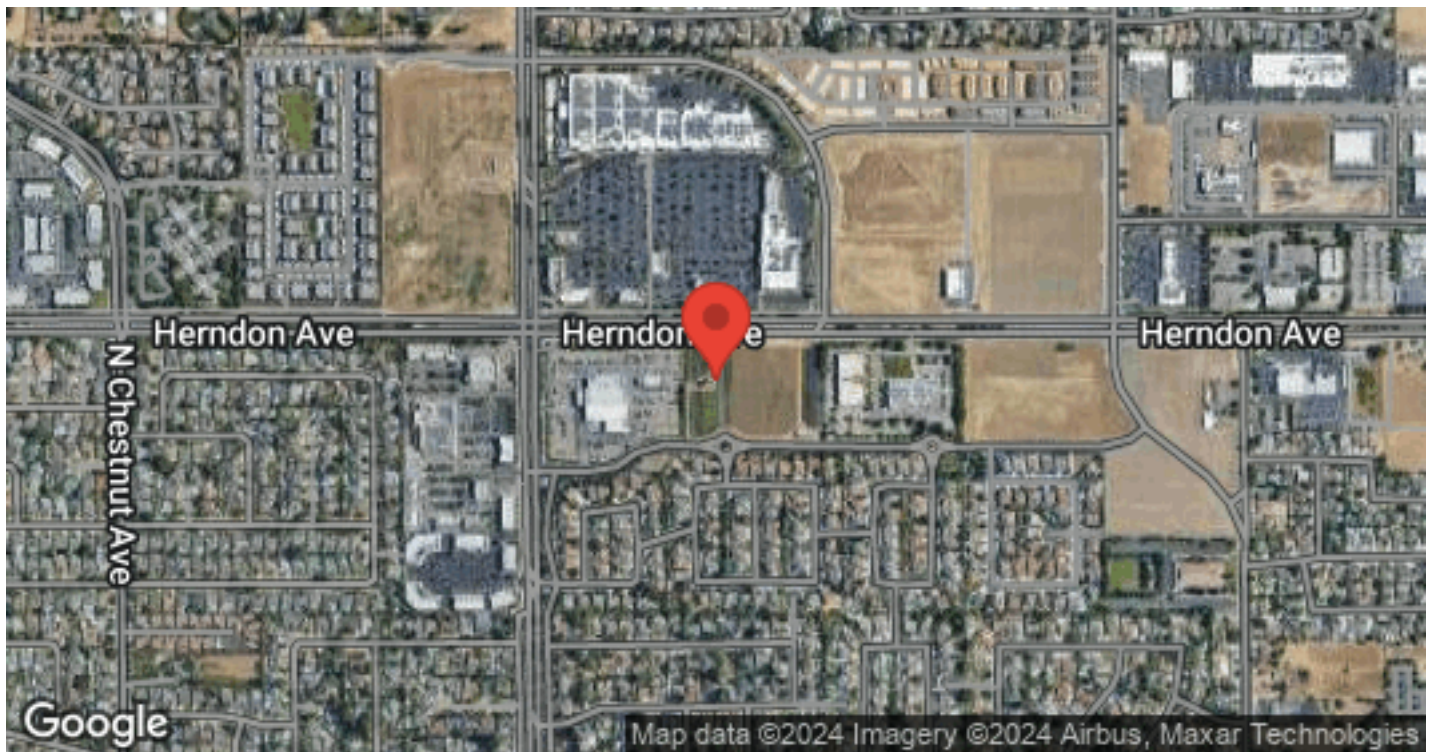


RE/MAX GOLD
 Each office independently owned and operated

GREG MAROOT
 RE/MAX Gold - Broker Associate
 (559) 994-0254
 gmaroot@comcast.net
 7815 N. Palm Ave. Ste. 120
 Fresno, CA. 93711

HERNDON PINNACLE OFFICE COMPLEX

700 W. HERNDON AVENUE, CLOVIS, CA 93612

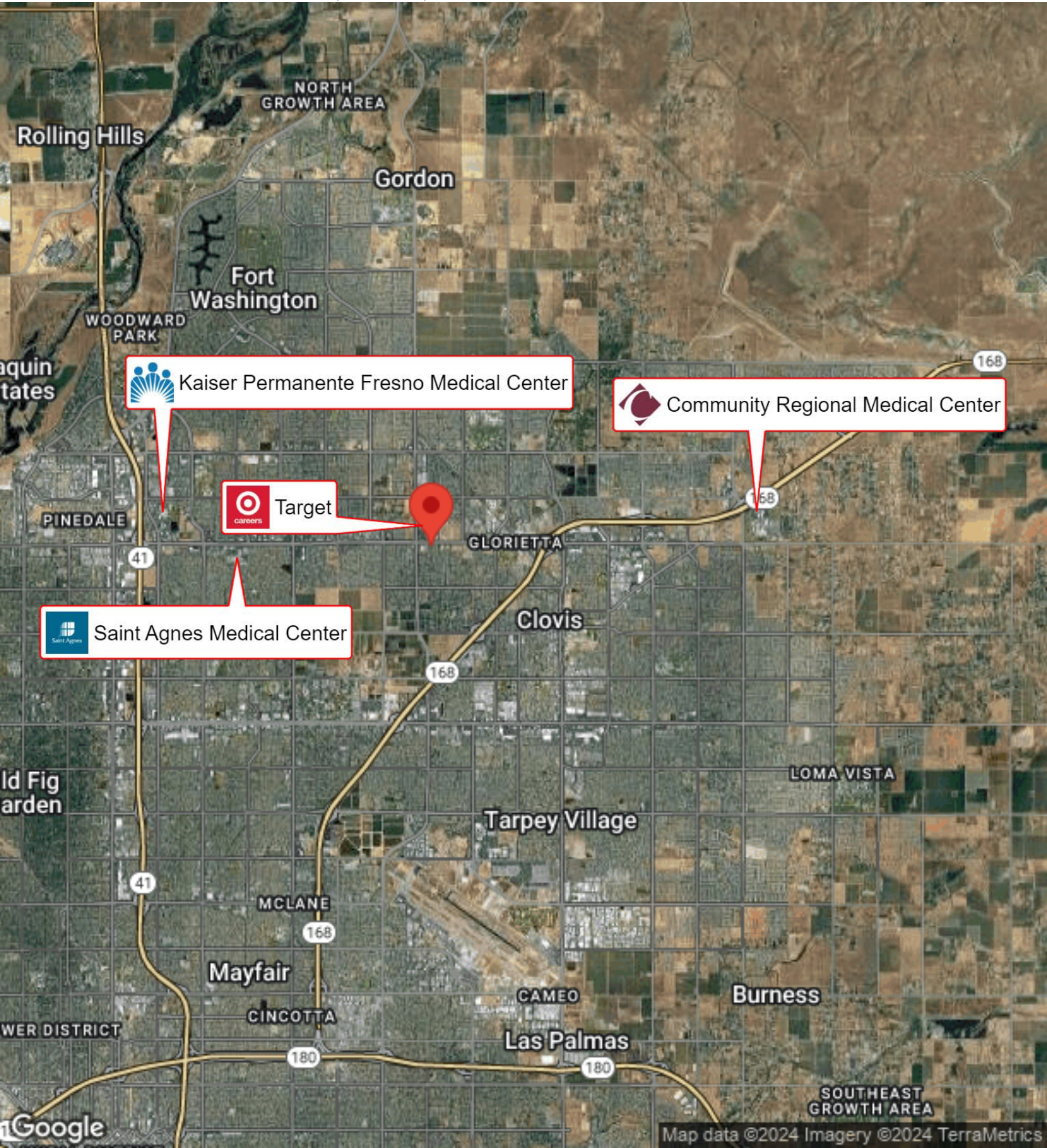


RE/MAX GOLD
 Each office independently owned and operated

GREG MAROOT
 RE/MAX Gold - Broker Associate
 (559) 994-0254
 gmaroot@comcast.net
 7815 N. Palm Ave. Ste. 120
 Fresno, CA. 93711

HERNDON PINNACLE OFFICE COMPLEX

700 W. HERNDON AVENUE, CLOVIS, CA 93612



 Kaiser Permanente Fresno Medical Center

 Community Regional Medical Center

 Target

 Saint Agnes Medical Center