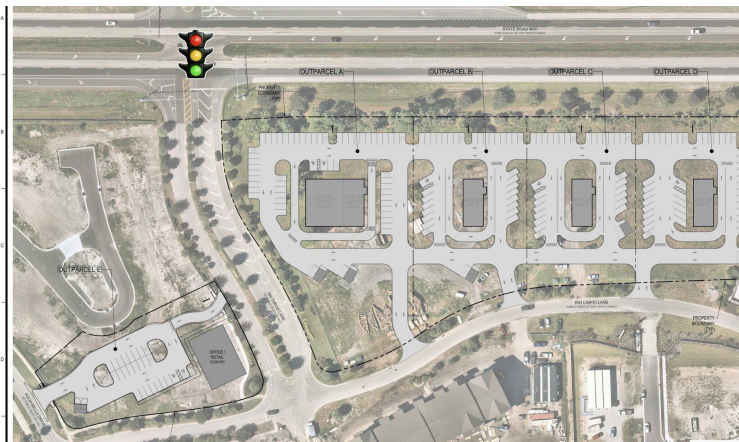




0 RIO LIMPIO LANE
Sarasota, FL 34275



PROPERTY OVERVIEW

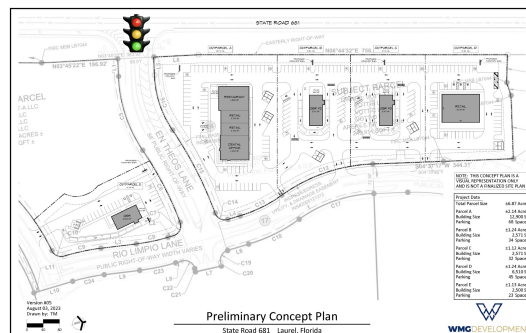
Ian Black Real Estate is pleased to present the opportunity to purchase or ground lease retail land on the east side of 681, just north of US 41 in booming south Sarasota County. The land is situated at the entrance to the Legacy Trail Community and just south of Palmer Ranch. The area is undergoing rapid residential growth. The trade area currently contains over 6,000 dwelling units and a population of over 15,000. This land is prime retail/medical/office development. The opportunity to ground lease ranges from 1.12 to 5.74 Acres.

PROPERTY SUMMARY

Lease Rate: Negotiable

Available Lot Sizes: 1.12 - 5.74 Acres

Total Land: 6.93 Acres



STEVE HORN, CCIM
941.906.8688 x107
steve@ian-black.com



MELISSA HARRIS, SIOR
941.906.8688 x114
Melissa@ian-black.com

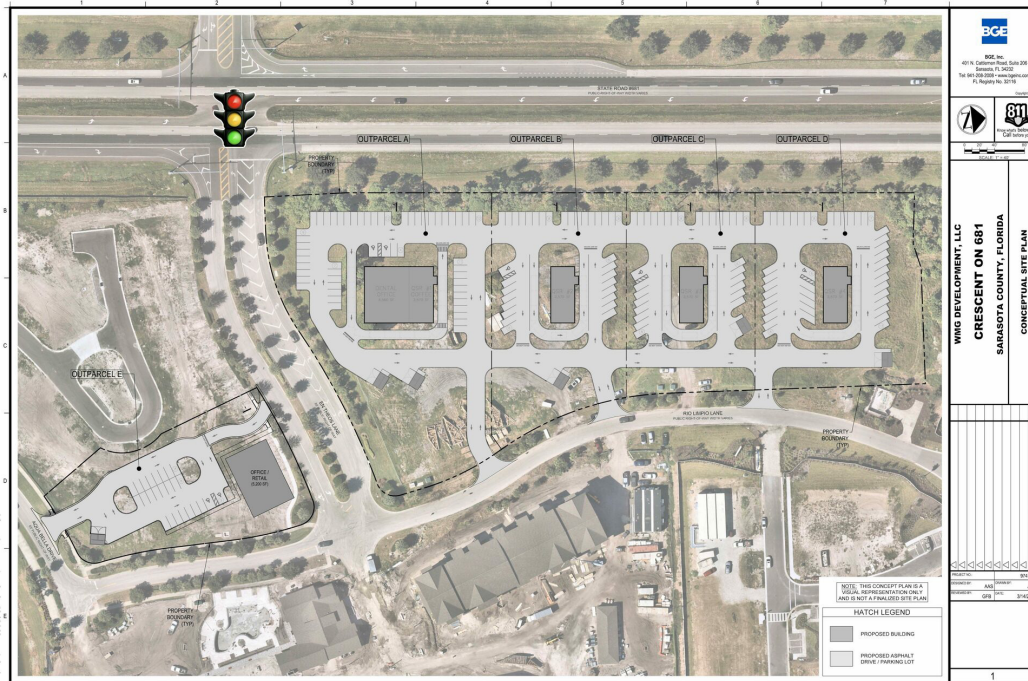
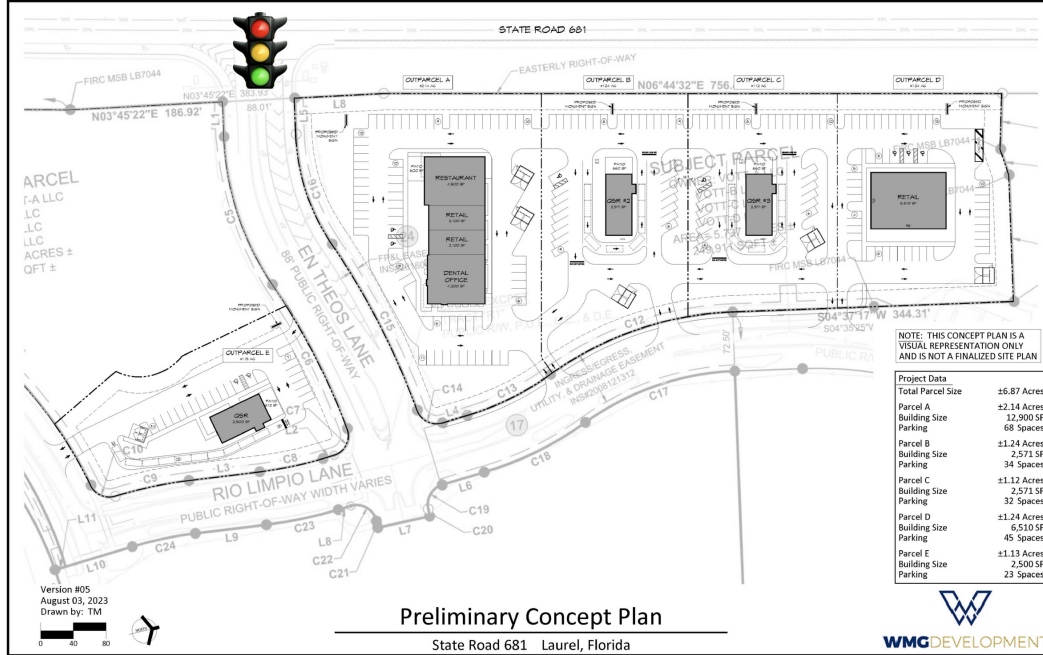
IANBLACK
REAL ESTATE
THE PLACE FOR SPACE

0 RIO LIMPIO LANE

ADDITIONAL PHOTOS

0 Rio Limpio Lane

Sarasota, FL 34275



STEVE HORN, CCIM
941.906.8688 x107
steve@ian-black.com



MELISSA HARRIS, SIOR
941.906.8688 x114
Melissa@ian-black.com

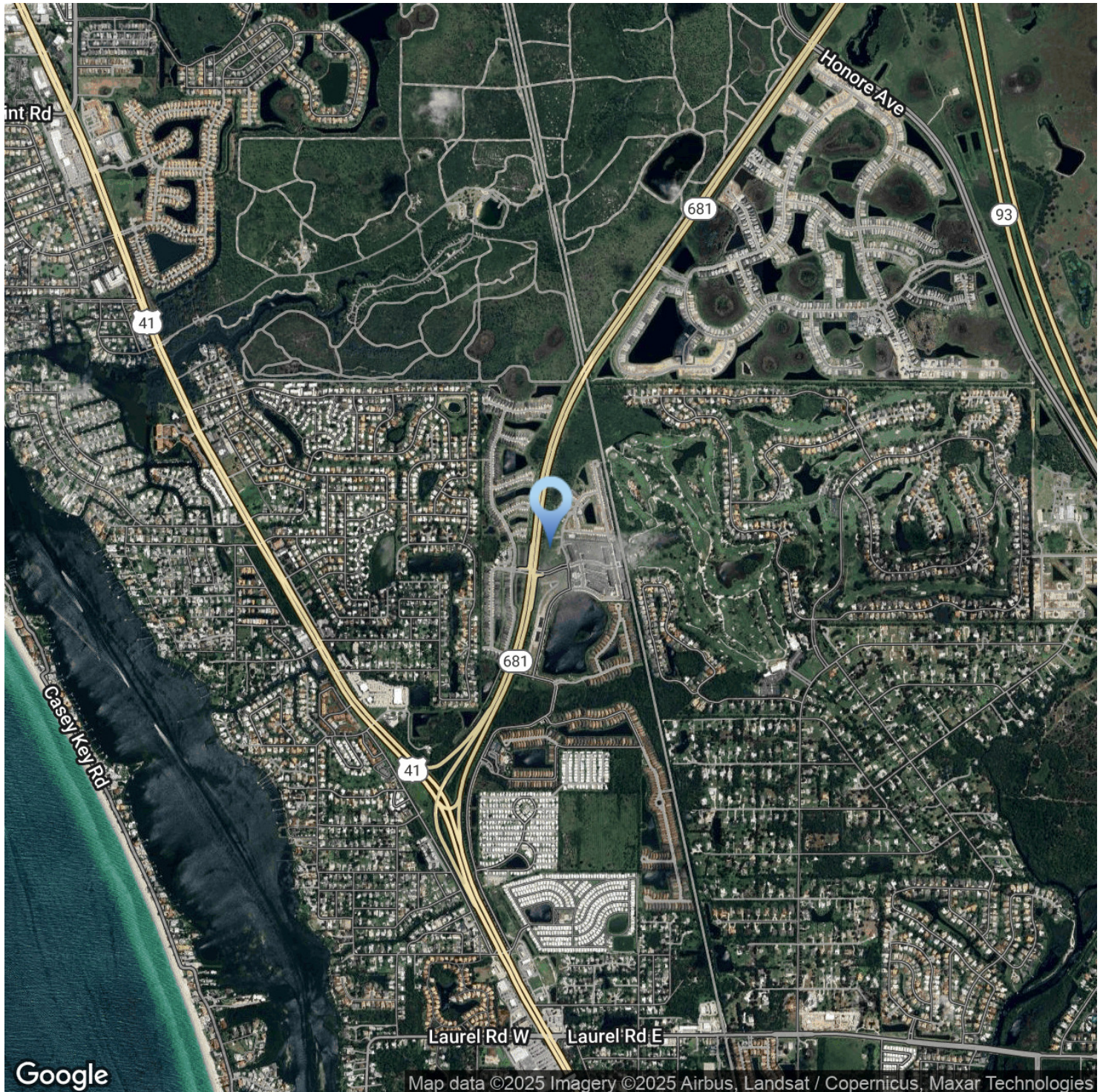
IAN BLACK
REAL ESTATE
THE PLACE FOR SPACE

0 RIO LIMPIO LANE

LOCATION MAP

0 Rio Limpio Lane

Sarasota, FL 34275



STEVE HORN, CCIM
941.906.8688 x107
steve@ian-black.com



MELISSA HARRIS, SIOR
941.906.8688 x114
Melissa@ian-black.com

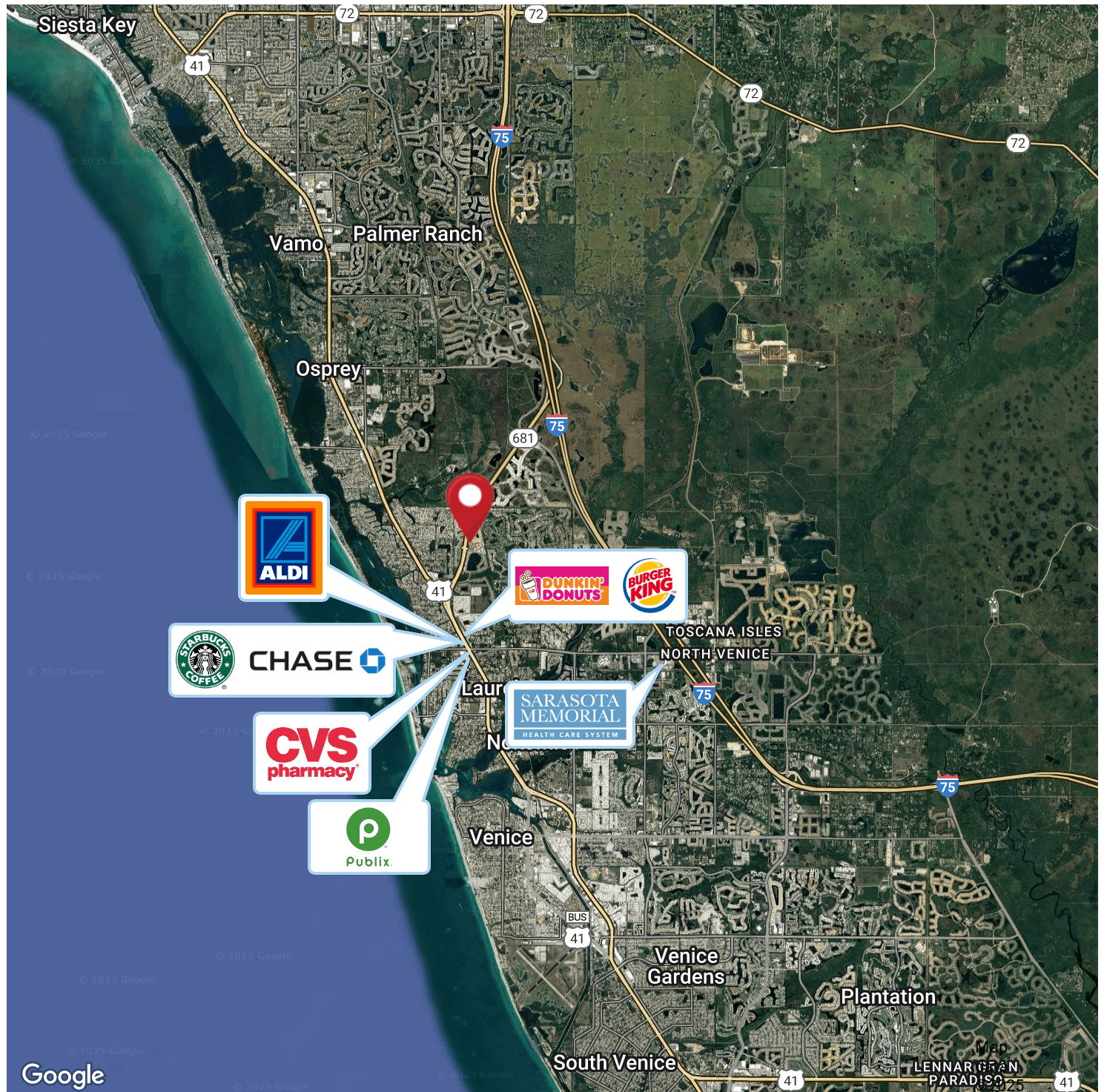
IAN BLACK
REAL ESTATE
THE PLACE FOR SPACE

0 RIO LIMPIO LANE

RETAILER MAP

0 Rio Limpio Lane

Sarasota, FL 34275



STEVE HORN, CCIM
941.906.8688 x107
steve@ian-black.com



MELISSA HARRIS, SIOR
941.906.8688 x114
Melissa@ian-black.com

IAN BLACK
REAL ESTATE
THE PLACE FOR SPACE