

AVAILABLE NOVEMBER 1, 2024



KEY FEATURES

- ±3,600 SF Available
- Tenant Allowance Available
- ±41,000 Vehicles per Day (NC DOT 2022)
- Partially in Shell Condition
- Ample parking
- Easy access to Greensboro, Kernersville, and Winston-Salem
- Private Entrance

OFFICE | MEDICAL ON HIGHWAY 68

OFFICE FOR LEASE

OFFICE | MEDICAL ON HIGHWAY 68

2021 Eastchester Drive
High Point, NC 27265

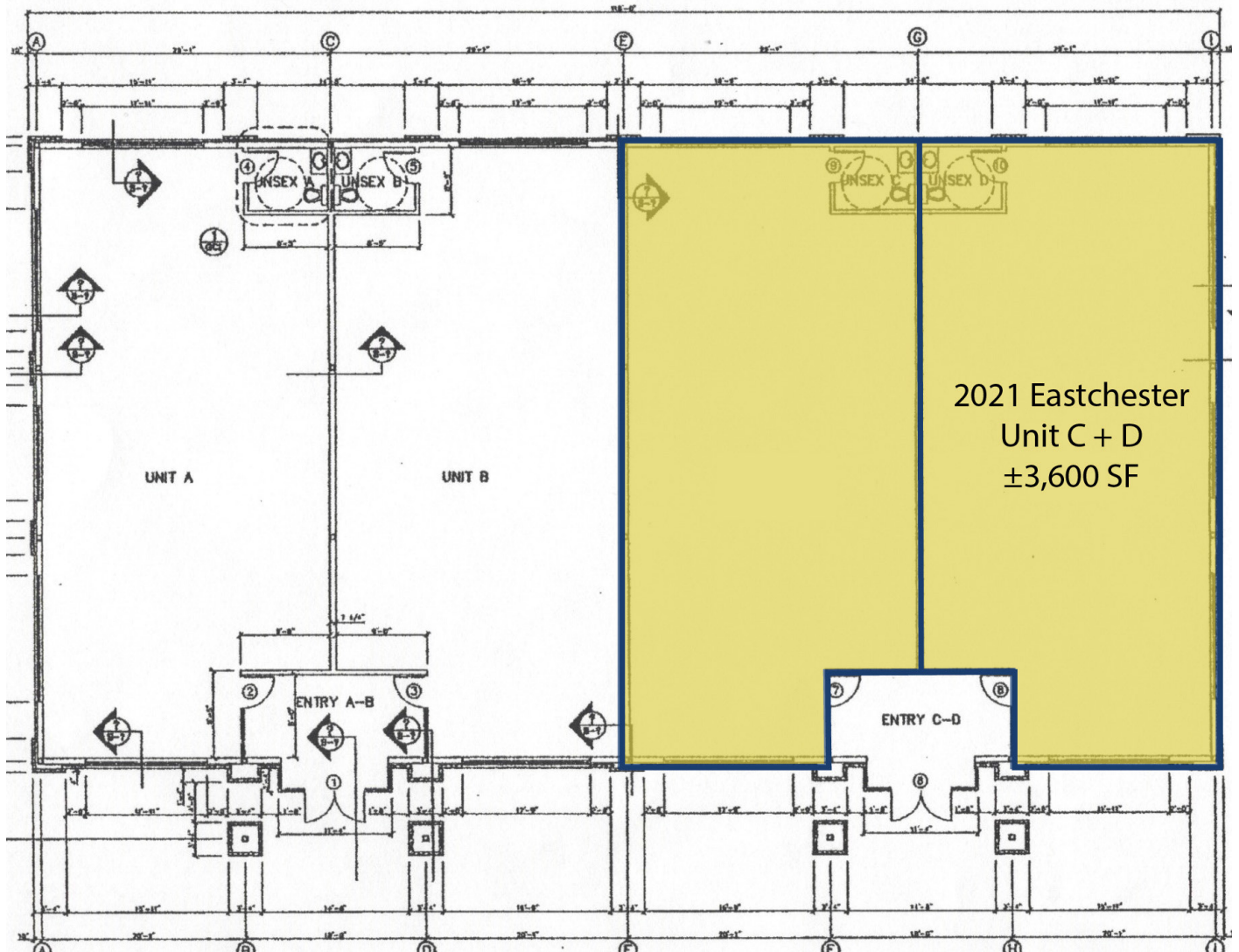


LEARN MORE ABOUT THIS PROPERTY

JORDAN REECE, CCIM

Jordan@commercialrealtync.com

336.689.7545



OFFICE | MEDICAL ON HIGHWAY 68

LOCATION

| | | | |
|---------|------------------------|-----|-------|
| Address | 2021 Eastchester Drive | | |
| City | High Point | Zip | 27265 |
| County | Guilford | | |

PROPERTY DETAILS

| | | | | | |
|---------------|----------------|---------------|------------|-------------|---------|
| Property Type | Office/Medical | Building SF ± | 7,200 | Avail SF ± | 3,600 |
| Year Built ± | 2014 | Floors ± | 1 | Sprinklered | No |
| Electrical | City of HP | Sewer | City of HP | Heat | Yes |
| Water | City of HP | Air | Central | Zoning | CU GO-M |

PRICING & TERMS

| | |
|--------------|---------|
| Lease Rt/SF± | \$21.00 |
| Lease Type | NNN |

| | |
|-----------|---|
| Comments: | Prime location in high traffic central Triad location. Office Park currently includes several medical related tenants. Space is currently in shell condition to be developed to Tenant's specs. |
|-----------|---|