



BayMaster Self Services Garage

15812 116th Ave NE, Bothell, WA 98011



Loretta Lo

Columbia Partners Real Estate
8221 5th Ave NE, Seattle, WA 98115
lorettalorealestate@gmail.com
(206) 829-8130



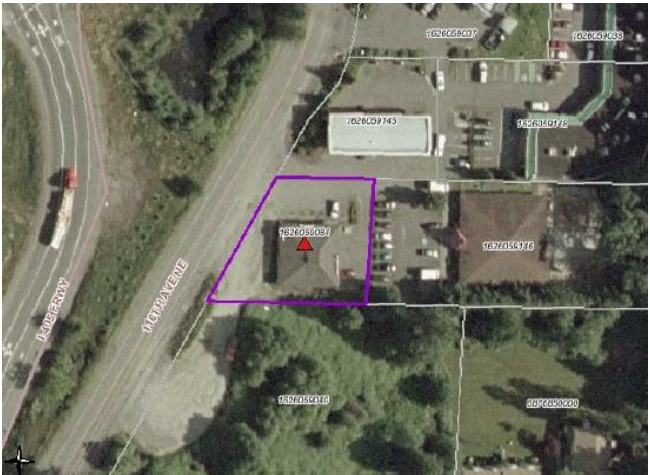
BayMaster Self Services Garage

\$32.00 /SF/YR

Available Now !! Off I-405 Freeway. Convenient located within the strip mall, two major gas stations , child care center. Office on 1st floor with 6 private office build out and some with natural lighting and windows. Reception area and private bathroom and showers. This approximately 1,200 SF suite is ready for services such as:Acupuncture Practice, Counseling Services, Yoga Lounge, Pilates Studio, Beauty Bar, Hair Salon, or Medical Practice, Dance Studio and more.

Please do not disturb neighboring tenants/businesses. All inquiries must be directed to the Listing Agent....

- Great Location off I-405
- Near Bothell &Woodinville Downtown/UW
- Located in the Strip Mall , Stand Alone Building



Rental Rate:	\$32.00 /SF/YR
Property Type:	Office
Building Class:	B
Rentable Building Area:	1,200 SF
Year Built:	1977
Walk Score ®:	33 (Car-Dependent)
Transit Score ®:	35 (Some Transit)
Rental Rate Mo:	\$2.67 /SF/MO

1

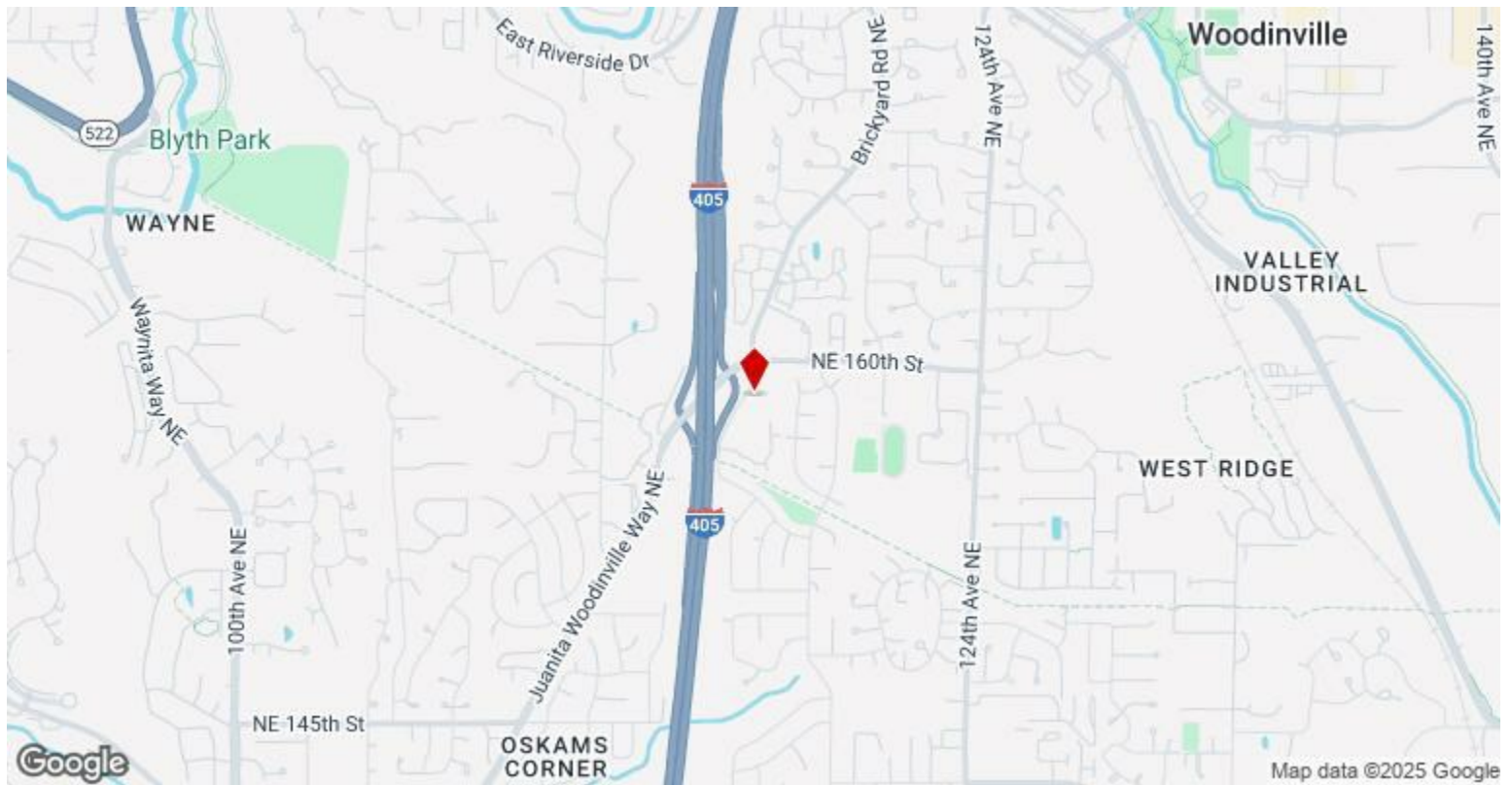
1st Floor Ste B

Space Available	1,200 SF
Rental Rate	\$32.00 /SF/YR
Date Available	November 17, 2025
Service Type	Triple Net (NNN)
Built Out As	Professional Services
Space Type	New
Space Use	Office
Lease Term	Negotiable

Available Now !! Off I-405 Freeway. Convenient located within the strip mall, two major gas stations , child care center. Office on 1st floor with 6 private office build out and some with natural lighting and windows. Reception area and private bathroom and showers. This approximately 1,200 SF suite is ready for services such as:Acupuncture Practice, Counseling Services, Yoga Lounge, Pilates Studio, Beauty Bar, Hair Salon, or Medical Practice, Dance Studio and more. Please do not disturb neighboring tenants/businesses. All inquiries must be directed to the Listing Agent.

Major Tenant Information

Tenant	SF Occupied	Lease Expired
Eric's Auto Repair	-	



15812 116th Ave NE, Bothell, WA 98011

Available Now !! Off I-405 Freeway. Convenient located within the strip mall, two major gas stations , child care center. Office on 1st floor with 6 private office build out and some with natural lighting and windows. Reception area and private bathroom and showers. This approximately 1,200 SF suite is ready for services such as:Acupuncture Practice, Counseling Services, Yoga Lounge, Pilates Studio, Beauty Bar, Hair Salon, or Medical Practice, Dance Studio and more.
Please do not disturb neighboring tenants/businesses. All inquiries must be directed to the Listing Agent.



A2