



FOR LEASE

■ DOWNTOWN OFFICE SPACE

218 Datura Street

West Palm Beach, FL 33401

PROPERTY OVERVIEW

2nd Floor - 3,510 sf consisting of five large offices/conference rooms, reception area, open break room, podcast/production studio and large open work area.

3rd Floor - 8,962 sf consisting of reception area, small conference, large conference, 10 private offices, one large exec office with restroom, large employee lounge with kitchen, open area for approximately 35 cubicles and four restrooms.

LOCATION OVERVIEW

Join PNC in the heart of West Palm Beach's Flagler Financial District, conveniently located near I-95, Palm Beach International Airport, the Convention Center and City Place. This desirable location is within walking distance to City Center, the County Courthouse, Flagler Drive waterfront, shops and restaurants along Clematis Street and the Brightline Train Station.

OFFERING SUMMARY

Building Size:

27,227 SF

Zoning:

(FWD-5) Flagler Waterfront-5

LEASE RATE

\$40.00/sf Gross (plus electric)



JEFFREY D. CHAMBERLIN

PRESIDENT/BROKER, CCIM,
SIOR

Mobile 772.528.6056
chamberlin@slccommercial.com



**JAIME CHAMBERLIN
ELFERT, CCIM, MBA**

VICE PRESIDENT, BROKER
Mobile 772.486.3330

jaime@slccommercial.com

772.220.4096 | slccommercial.com

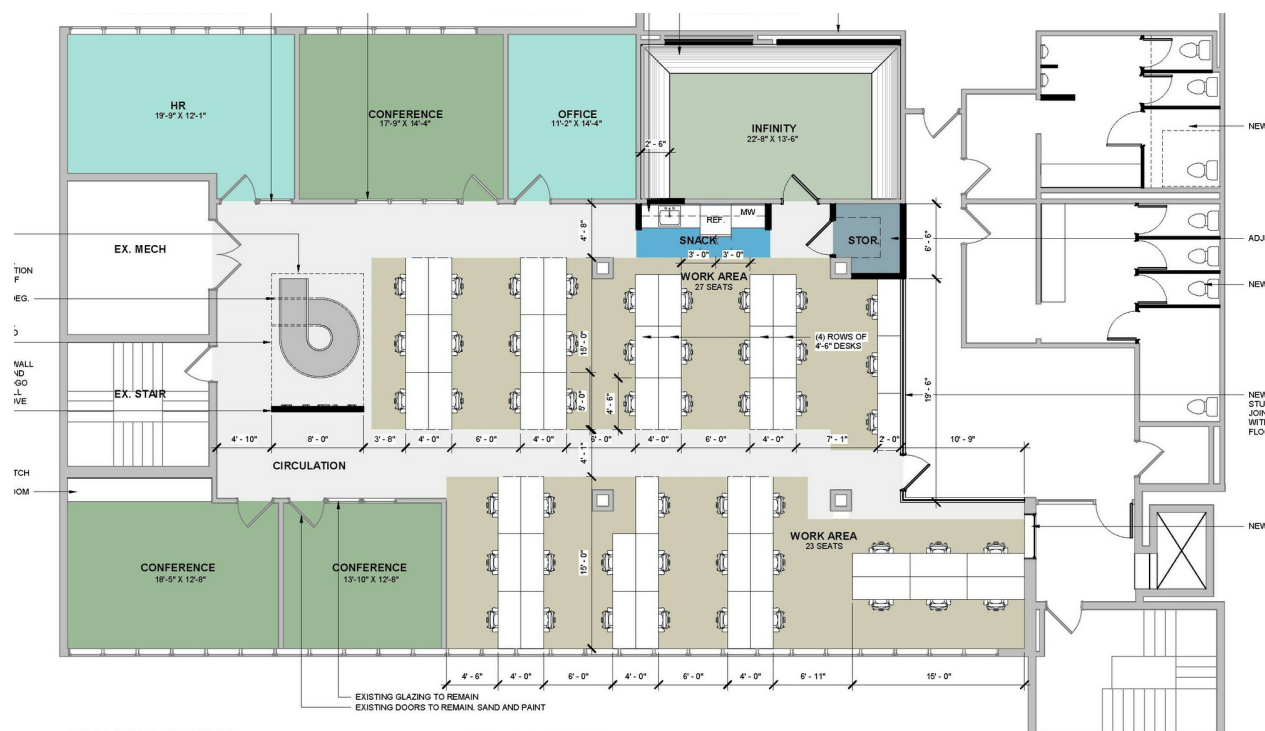


SLC Commercial
Realty & Development

The information contained herein has been obtained from sources believed to be reliable, but no warranty or representation, expressed or implied, is made. All sizes and dimensions are approximate. Any prospective buyer should exercise prudence and verify independently all significant data and property information. This is NOT an offer of sub-agency or co-brokerage.

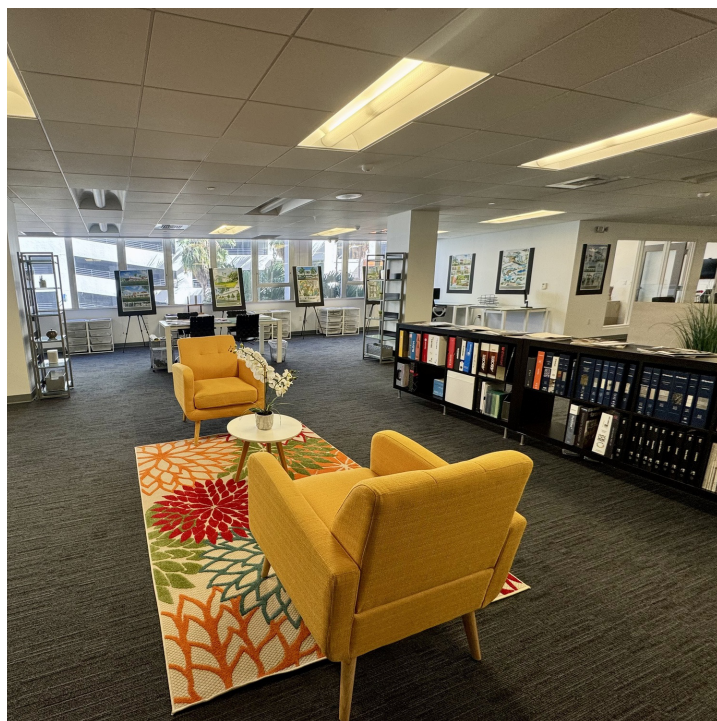
PROFESSIONAL OFFICE SPACE - DOWNTOWN WEST PALM BEACH

PROFESSIONAL OFFICE SPACE - DOWNTOWN WEST PALM BEACH



SPACE LAYOUT

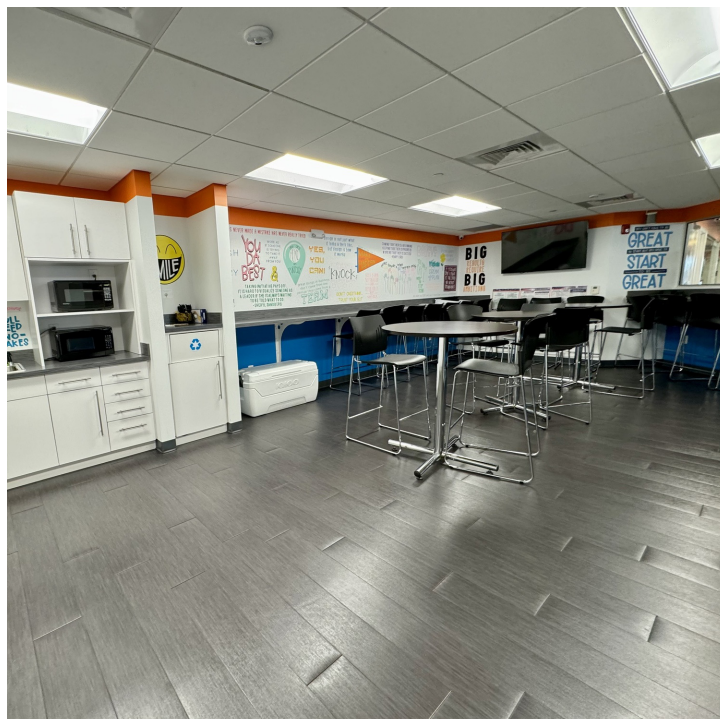
- 5 large office or conference/meeting rooms
- Large open work area with open break room
- Infinity room for production/podcast
- Men's and Women's multi-stall restrooms in common area



3rd Floor - 8,962sf

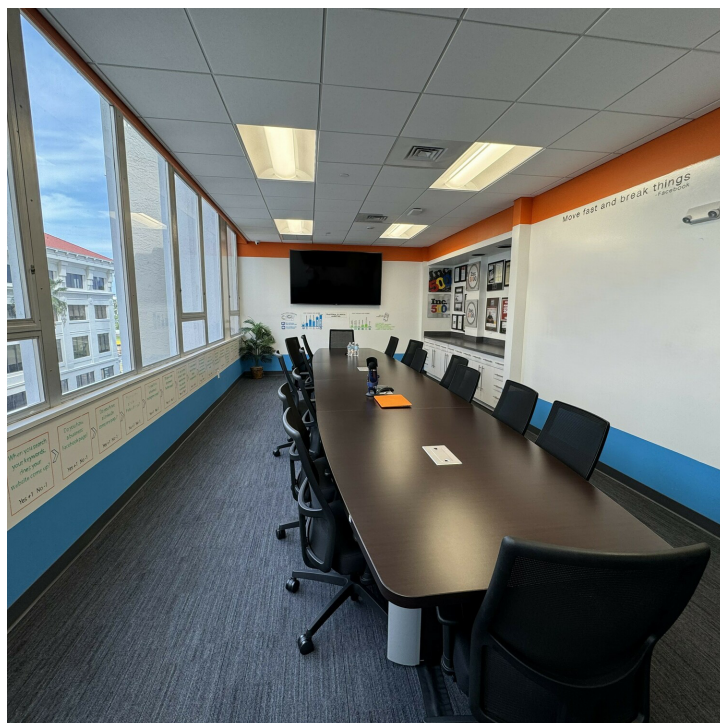
PROFESSIONAL OFFICE SPACE - DOWNTOWN WEST PALM BEACH

FOR LEASE



SPACE LAYOUT

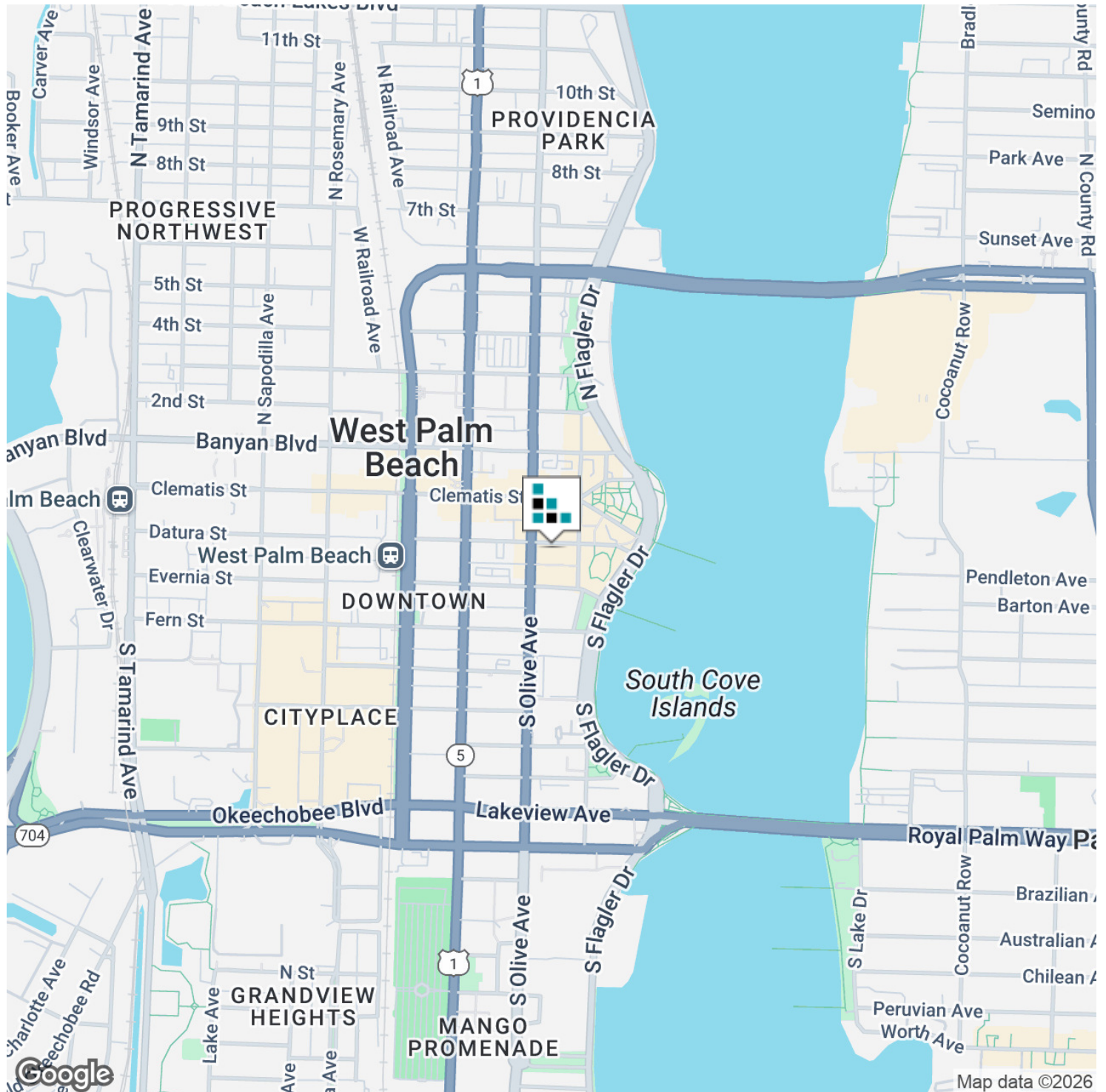
- Reception Area
- 10 private offices
- Small conference room
- Large conference room
- Employee lounge w/ kitchen
- Large exec office w/ private restroom
- Open workspace area for approx. 35 cubicles
- Four Restrooms



Location Map

PROFESSIONAL OFFICE SPACE - DOWNTOWN WEST PALM BEACH

FOR LEASE



Disclaimer

PROFESSIONAL OFFICE SPACE - DOWNTOWN WEST PALM BEACH

FOR LEASE

This presentation package has been prepared by the company representing the property for informational purposes only and does not purport to contain all information necessary to reach a purchase decision.

The information herein has been given by the Owner or other sources believed to be reliable, but it has not necessarily been independently verified by the Company representing the property and neither its accuracy nor its completeness is guaranteed.

This information is subject to errors, omissions, changes, prior sale or withdrawal without notice by the Company representing the property and does not constitute a recommendation, endorsement or advice as to the value for the purchase of any property. Each prospective lessee or purchaser is to rely upon his/her own investigation, evaluation and judgment as to the advisability of leasing or purchasing the property.

Furthermore, any financial information and calculations presented in this analysis are believed to be accurate, but are not guaranteed and are intended for the purposes of projection and analysis only. The user of this financial information contained herein should consult a tax specialist concerning his/her particular circumstances before making any investment.