

718 7TH STREET, NW

Washington, DC 20001

Office For Lease

12,010 - 26,839 SF



Leasing Information:
202.513.6700

Merrill Turnbull
202.513.6713
mturnbull@lpc.com

Adam Biberaj
202.513.6736
abiberaj@lpc.com

Tim Whitebread
202.513.6712
twhitebread@lpc.com

Lincoln

Lincoln Property Company
101 Constitution Avenue, NW Suite 325 East
Washington, DC 20001

www.lpc.com

718 7TH STREET, NW

Washington, DC 20001

Office For Lease



Property Highlights

- Great brick & beam construction
- Full Building Opportunity!
- Private outdoor patio on 4th floor
- Steps from Capital One Arena
- Heartbeat of Chinatown, blocks from Gallery Place & Metro Center station
- Great option for Coworking/Technology firm
- Furniture available with direct entrance to 7th Street
- \$515 million Capital One Arena renovation forthcoming
- Nearly 2 million square feet of retail in the nearby vicinity

Availabilities

Suite 200
Suite 300 & 400

SF

12,010 SF
14,829 SF

Date Available

Immediately
Immediately

Merrill Turnbull

202.513.6713
mturnbull@lpc.com

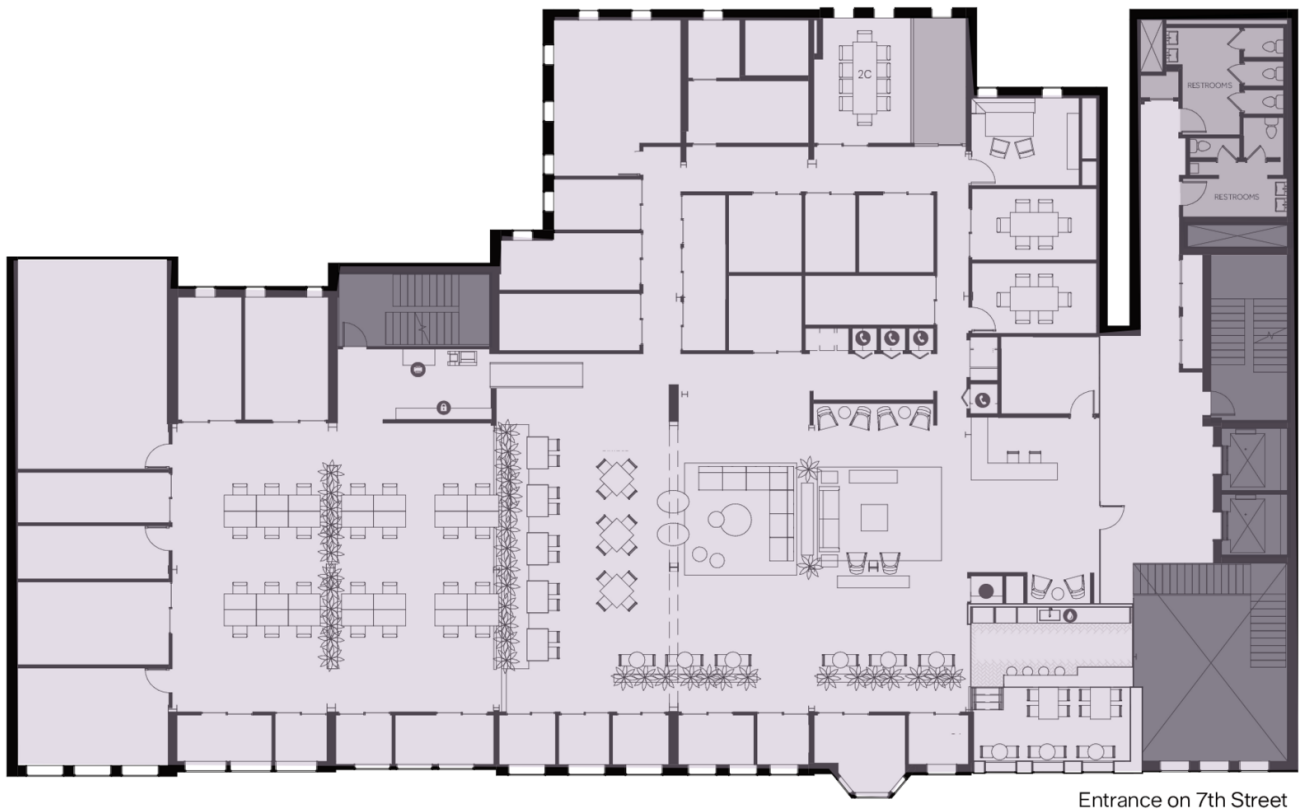
Adam Biberaj

202.513.6736
abiberaj@lpc.com

Tim Whitebread

202.513.6712
twhitebread@lpc.com

Lincoln



Suite	Size	Description	Virtual Tour
■ Suite 200	12,010 SF	Features brick, concrete, and warm wood details complemented by striking floor-to-ceiling windows. Can be leased separately.	View Here

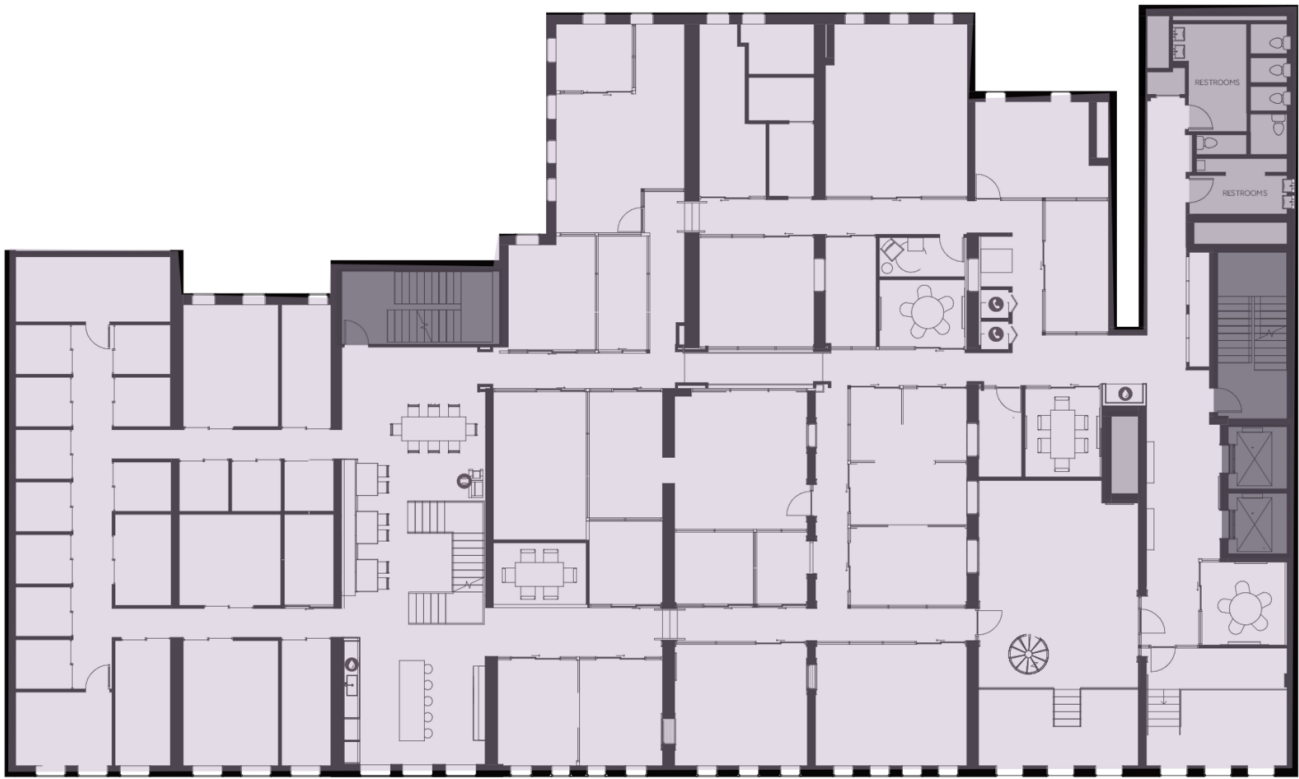
Merrill Turnbull **Adam Biberaj** **Tim Whitebread**
 202.513.6713 202.513.6736 202.513.6712
 mturnbull@lpc.com abiberaj@lpc.com twhitebread@lpc.com

Lincoln

718 7TH STREET, NW

3rd Floor

Washington, DC 20001



7th Street

Suite	Size	Description	Virtual Tour
■ Suite 300 & 400	14,829 SF	Features brick, concrete, and warm wood details complemented by striking floor-to-ceiling windows. Suite 300 & 400 must be leased together.	View Here

Merrill Turnbull **Adam Biberaj** **Tim Whitebread**
202.513.6713 202.513.6736 202.513.6712
mturnbull@lpc.com abiberaj@lpc.com twhitebread@lpc.com

Lincoln

718 7TH STREET, NW

Washington, DC 20001

4th Floor



Suite	Size	Description	Virtual Tour
■ Suite 300 & 400	14,829 SF	Features brick, concrete, and warm wood details complemented by striking floor-to-ceiling windows. Suite 300 & 400 must be leased together.	View Here

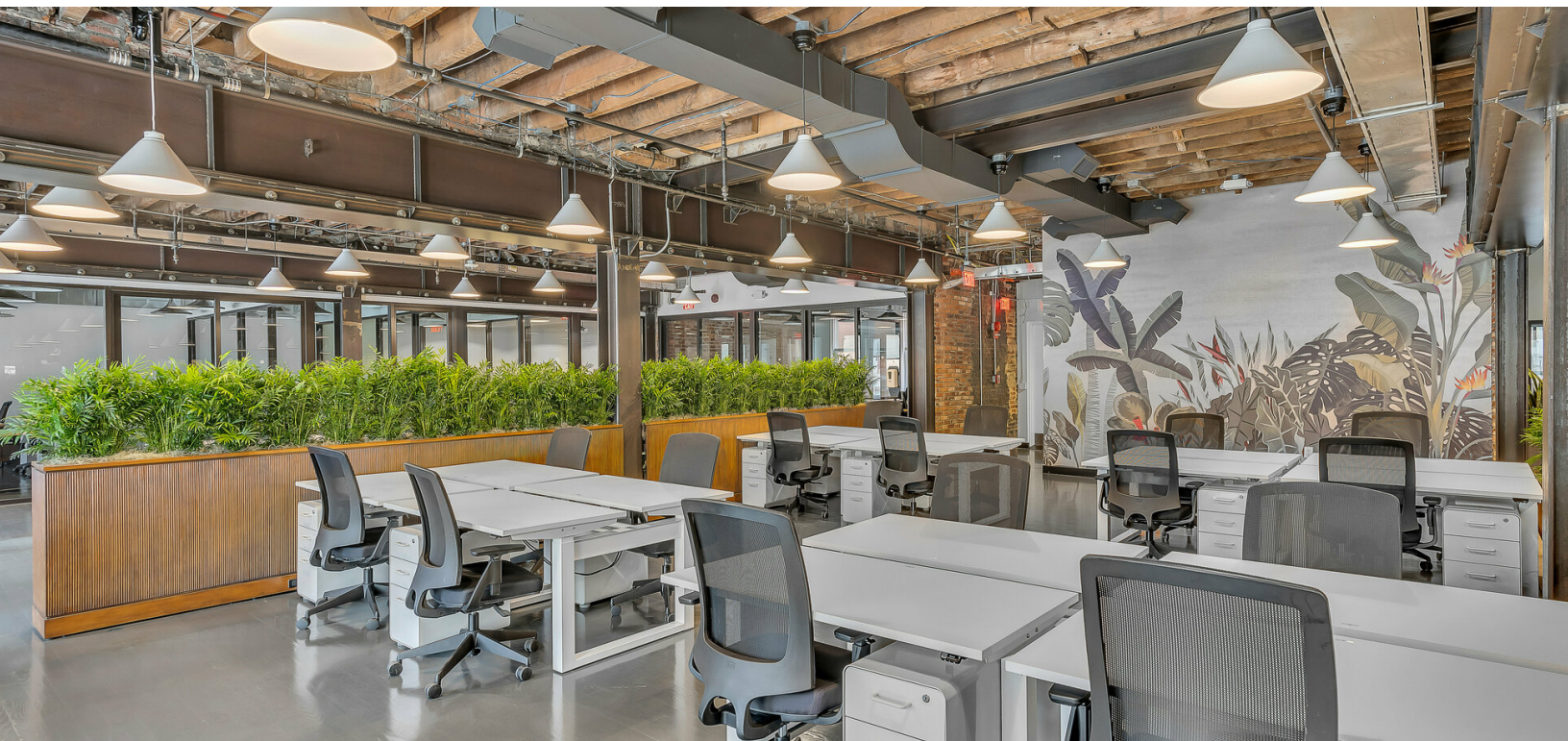
Merrill Turnbull **Adam Biberaj** **Tim Whitebread**
202.513.6713 202.513.6736 202.513.6712
mturnbull@lpc.com abiberaj@lpc.com twhitebread@lpc.com

Lincoln

718 7TH STREET, NW

Washington, DC 20001

Photos



Merrill Turnbull

202.513.6713
mturnbull@lpc.com

Adam Biberaj

202.513.6736
abiberaj@lpc.com

Tim Whitebread

202.513.6712
twhitebread@lpc.com

Lincoln



718 7TH STREET, NW

Washington, DC 20001

Leasing Information:
202.513.6700

Merrill Turnbull
202.513.6713
mturnbull@lpc.com

Adam Biberaj
202.513.6736
abiberaj@lpc.com

Tim Whitebread
202.513.6712
twhitebread@lpc.com

Lincoln

Lincoln Property Company
101 Constitution Avenue, NW Suite 325 East
Washington, DC 20001

www.lpc.com