

**OPTION A**

2229 N. King Street

TMK: 1-1-2-14:62/63/64/82/83

approx. 45,425 square feet

Price: \$10,675,000

(~\$235/sf)

**OPTION B**

2329 N. King Street

TMK: 1-1-2-15:2

approx. 77,279 square feet

Price: \$16,615,000

(~\$215/sf)

**OPTION C**

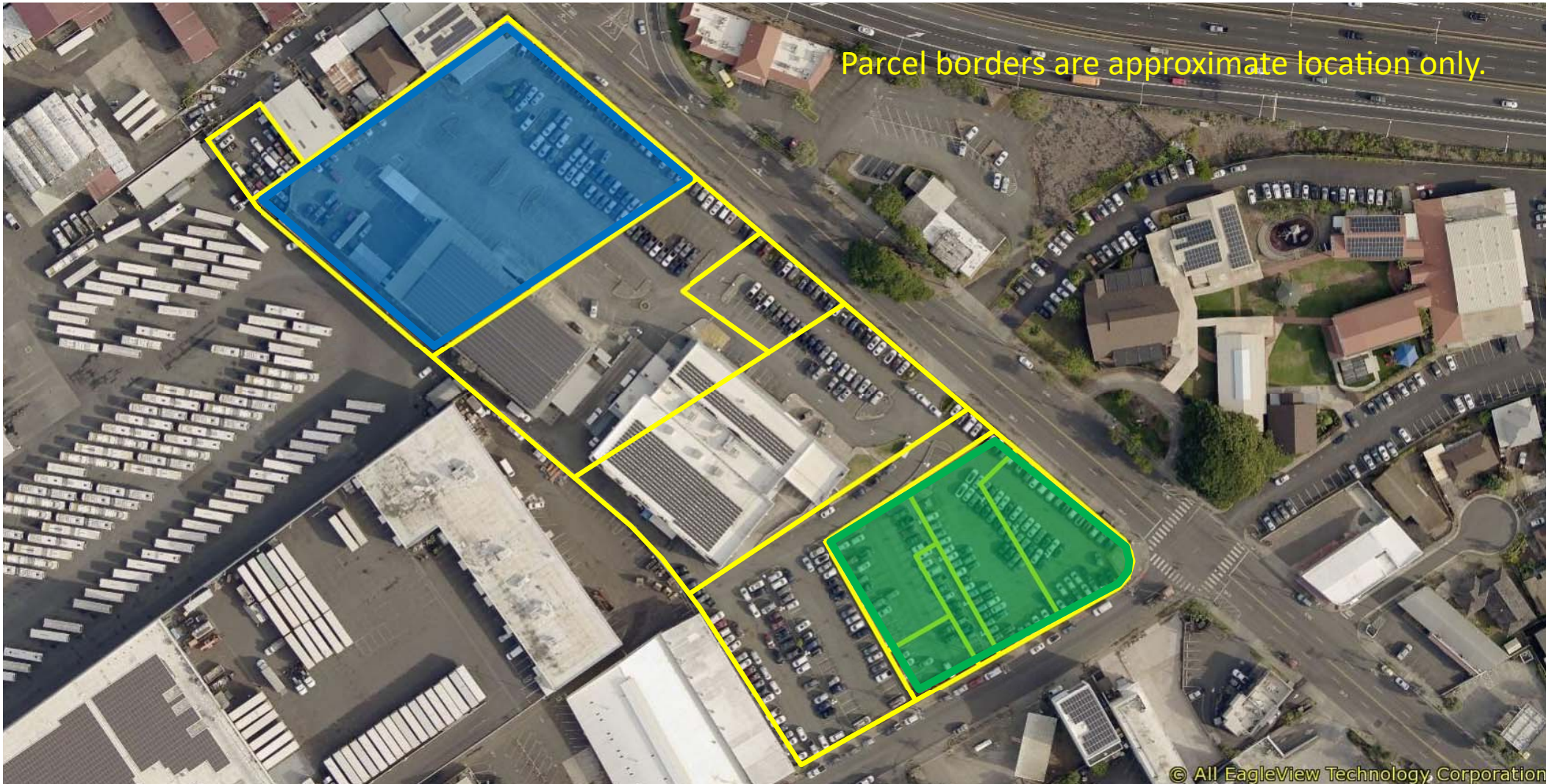
2295 N. King Street

TMK: 1-1-2-14:49/62/63/64/82/83/93;

1-1-2-15:1/2/5; 1-1-2-16:19

approx. 6.24 acres (11 parcels)

Asking Price: Call Listor



Parcel borders are approximate location only.